

# Far East Gippsland Back Road Tours Guide

Plan your trip  
This map is a tour GUIDE only.  
Carry detailed maps on your trip.

These may include:  
The Vicmap topographical map 1:25 000 / 1:50 000 series OR  
Department of Sustainability and Environment  
1:100 000 Orbost/Bendoc & Cann River District Maps.

5 0 5 10 Kilometers



## 4WD Recreational Track Classification

This is a new (2008) classification system for Four Wheel Drive tracks on Public Land across Victoria.



**Easy** All Wheel Drive and High Range 4WD Drive Vehicles. Mostly unsealed roads with no obstacle and minor gradients. Can be low clearance with single range and road tyres. May be more difficult in wet conditions.



**Medium** Mainly High Range 4WD but Low Range required. Some 4WD experience or training required. Tracks with some steep and/or rocky/slippery/sandy sections. May have shallow water crossings. Suitable for medium clearance vehicles with dual range and all terrain or road tyres. Recommended to be done in groups of vehicles. Will be more difficult in wet conditions.



**Difficult** Significant Low Range 4WD. Recommended for drivers with reasonable experience or 4WD training. Tracks with frequent steep and/or rocky/slippery/sandy sections. Possible water crossings. Suitable for medium to high clearance vehicles with dual range and all terrain tyres. To be done in groups of vehicles. Will be more difficult in wet conditions.

## Emergency Calls

Mobile phone coverage is intermittent in Far East Gippsland. Dialling 000 will connect you with police, fire and ambulance services. Provide the operator with details of your exact location.

In addition, you may be able to make an emergency call using the international emergency call number 112. This is available to GSM users. (GSM - Global System for Mobiles is an international mobile phone standard. Your phone will connect with emergency services if you are outside the coverage of your regular mobile phone network but within the coverage of another GSM operator.)

NOTE: Log Truck Traffic  
use UHF Channel 40

## Road Conditions

The condition of forest tracks can be variable due to environmental factors. Be aware of weather forecasts.

## Seasonal Road Closures

Some roads and tracks in parks and forests throughout Victoria are seasonally closed during the year, especially in winter to help protect track surfaces, water quality and the environment and to ensure driver safety. Most closures take effect from the Thursday after the Queens Birthday long weekend in June and remain in force until the Melbourne Cup Day long weekend.

## Temporary Road Closures

Roads may need to be temporarily closed because of landslips, major roadworks or unreasonable wet weather. Check road conditions before leaving on your trip. For up to date information contact regional DSE offices or Parks Victoria (see reverse side for contact details).

Be safety conscious. Ensure that your vehicle is mechanically sound and fully equipped. Carry sufficient fuel, food and water in case of an emergency. Where possible, travel with another vehicle or leave details of your trip with family or Police.

## Bushfires

On average, campfires cause approximately 10% of the bushfires that start on public land. Restrictions apply to ensure that fires do not escape and bushland is protected.

**Total Fire Ban Days** These are declared when conditions are hot, windy and the bush is dry. There are five fire ban districts in Victoria - it is up to you to find out when a fire ban is on. Listen to the radio, contact your local DSE, Parks Victoria or CFA office before lighting up. If in doubt, keep your campfire out. (see reverse side for contact details)

## Campfires - State Forests

Use a constructed fireplace where provided or use a fuel stove. Otherwise light your campfire in a trench 30 cm deep, to prevent embers flying out. Take care as some tree roots can burn. A properly constructed fireplace is one that contains the perimeter of the fire. Clear the ground and air space of any flammable material (eg. leaves, twigs, tree stumps) within 3 metres of your campfire.

**Campfires - National Parks and other reserves** Campfires are only allowed in permitted areas in properly constructed fireplaces to reduce damage to the environment. Try using fuel stoves as they are cleaner, cook faster and don't scar the landscape.

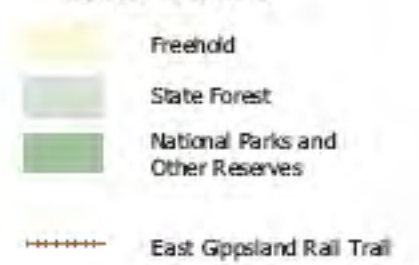
Remember, if your campfire is cool to touch it is safe to leave.

## Legend

### Roads



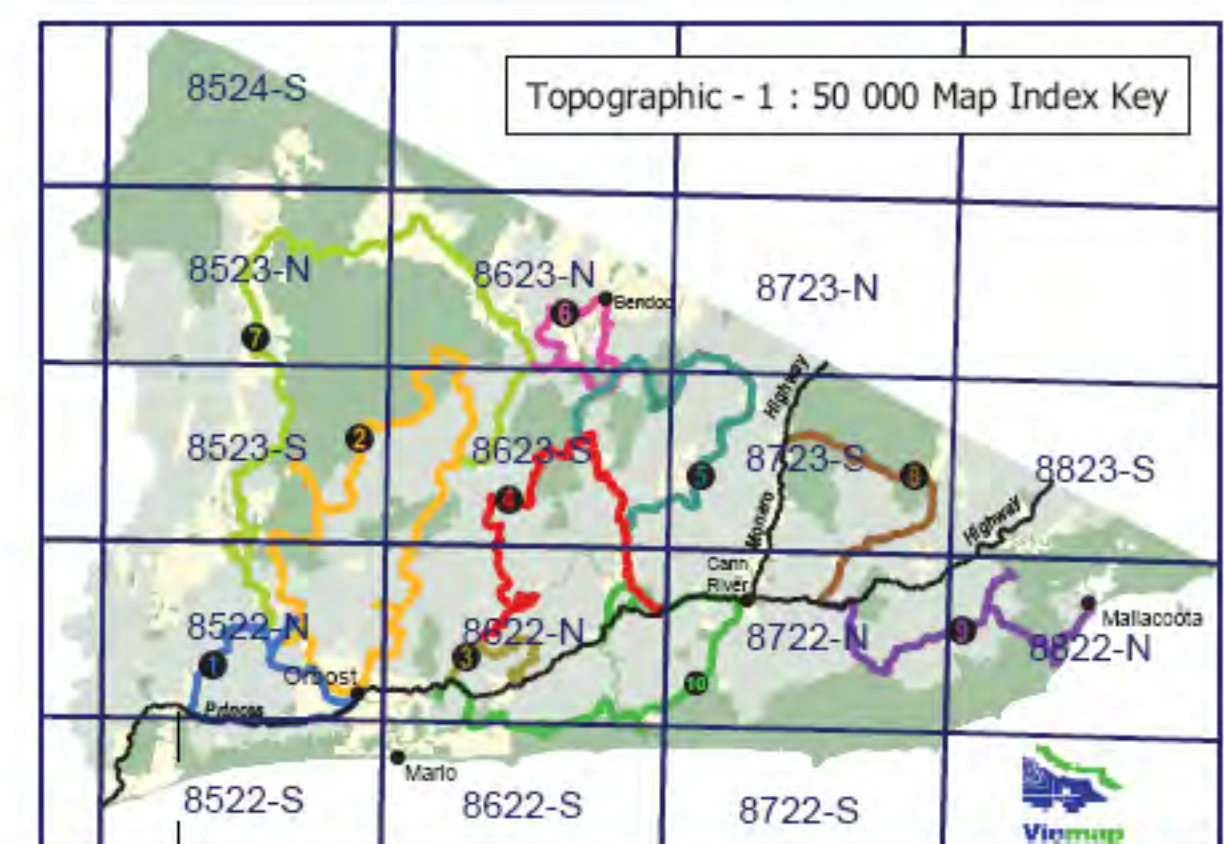
### Land Status



## Back Road Tours



## Recreation Facilities



Caring for the environment:  
Help us look after your parks and forests by remembering these guidelines:

All native plants, animals, cultural and historic features are protected. Take your rubbish with you. Pets and firearms are not permitted in National Parks.  
Please do not use soaps, detergents and toothpaste in the streams and waterways as they are a source of drinking water for others. Dispose of any dirty water away from watercourses. Please do not feed or handle wildlife as it fosters dependence and may cause disease. Road closures apply to all vehicles. To help protect vehicle tracks from damage, always engage four wheel drive when on 4WD tracks. You can find out other ways of caring for tracks by enrolling in a 4WD training course with Four Wheel Drive Victoria.

This publication may be of assistance to you but the State of Victoria and its employees do not guarantee that the publication is without fault of any kind or is wholly appropriate for your particular purposes and therefore disclaims all liability for any error, loss or consequence which may arise from your relying on any information in this publication.

TOWNSHIP/LOCALITY	FUEL	FOOD
Bendoc		
Bonang		
Buchan		
Cann River		
Geinty (Karoonda Park)		
Newmerella		
Mallacoota		
Mario		
Orbost		

**Dog Owners Beware!**  
The forests of Far East Gippsland are subject to a continuous fox control program for the benefit of a number of rare and endangered species. Poison baits are buried within specifically designed bait stations that are constructed adjacent to vehicle tracks and distributed throughout the entire region. Your dog could therefore be at great risk if it is allowed to wander away during your time in the forest. Please remember that both parvovirus and snakes are also found in East Gippsland, and that these also pose a risk to dogs if they wander.

**Leakes Entrance Visitor Information Centre**  
2 Marine Parade Leakes Entrance 3909  
Ph: 5133 1966  
Email: [leakesvic@gipps.vic.gov.au](mailto:leakesvic@gipps.vic.gov.au)  
**Bairnsdale Visitor Information Centre**  
240 Main Street Bairnsdale 3875  
Ph: 5132 3444  
Email: [bairnsdalevic@gipps.vic.gov.au](mailto:bairnsdalevic@gipps.vic.gov.au)

**FREECALL 1800 637 060**



# Far East Gippsland Back Road Tours

Department of  
Sustainability and  
Environment

## 1 Stringers Knob Mottle Range

**2WD in dry weather only.**  
**Discover a unique monument to a bushman's ingenuity and impressive flora.**

**4WD Classification:** Easy   
[Optional Side Trip: Long Pt.- Difficult 

**Distance:** 81 kms

**Duration:** Easy Half Day

**Further Information:** None

**Warnings:** Log Truck Traffic. Watch out for cyclists!

Optional Side Trip- The road to Long Point has a steep descent, requires a high clearance and is unsuitable for trailers due to a limited turning area. See 4WD classification.

**START at Orbost's Forest Park** carpark. Turn right onto Nicholson St travel 100m → turn left onto Lochiel St travel 0.5 kms → turn right onto the Princes Hwy travelling 0.7 kms over the **Snowy River** → turn left (under bridge) onto the Orbost-Buchan route viewing (on left) the **Rail Trestle Bridge**. The longest in Victoria, goods trains used this from 1916 to 1987. This section of the route partially follows the western banks of the **Snowy River**. Since 1957 the Snowy River Hydro Scheme has diverted the upper catchment snowmelt waters from the Snowy Mountains to the western side of the Great Dividing Range into the Murray-Darling Basin. Rehabilitation works are underway on the lower Snowy flats including fencing and revegetation of river banks. Regular flooding replenishes nutrients ensuring high fertility soil that supports a niche seed corn industry.

From the Princes Hwy intersection follow the signs to Buchan travel 20.9 kms →

**[Optional Side Trip (See Warnings):** Turn right onto Long Point Rd travel 7.5 kms → **Long Point Picnic & Camping Ground**. A pleasant site on the Snowy River.  
→ return to the Orbost-Buchan Rd turn right]

### DSE regional locations:

**Orbost** 171-173 Nicholson Street, Orbost 3888  
Phone: 03 5161 1222

**Bendoc** Nichol Street, Bendoc 3888  
Phone: 02 6459 0500

**Cann River** Princes Highway, Cann River 3890  
Phone: 03 5158 2100

### DSE Customer Service Centre 136 186

call from anywhere within Australia for the cost of a local call (excluding mobiles and public telephones which incur additional costs) [customer.service@dse.vic.gov.au](mailto:customer.service@dse.vic.gov.au)

### Victorian Bushfire Information Line 1800 240667

© State of Victoria, Department of Sustainability and Environment 2007, 2008. This publication is copyright. No part may be reproduced by any process except in accordance with the provisions of the Copyright Act 1968. ISBN 978-1-74208-808-2 (Print) ISBN 978-1-74208-809-9 (Online)  
This publication may be of assistance to you but the State of Victoria and its employees do not guarantee that the publication is without flaw of any kind or is wholly appropriate for your particular purposes and therefore disclaims all liability for any error, loss or consequence which may arise from you relying on any information in this publication.  
First Published in 2008 by the Victorian Government. Land and Fire, Orbost, East Gippsland Area, Department of Sustainability and Environment. Authorised by the Victorian Government, Melbourne. Printed by E-Gee Printers. Second Edition printed in November 2008. Parks Victoria & East Gippsland Shire Council.



Spotted Gums,  
*Eucalyptus maculata*

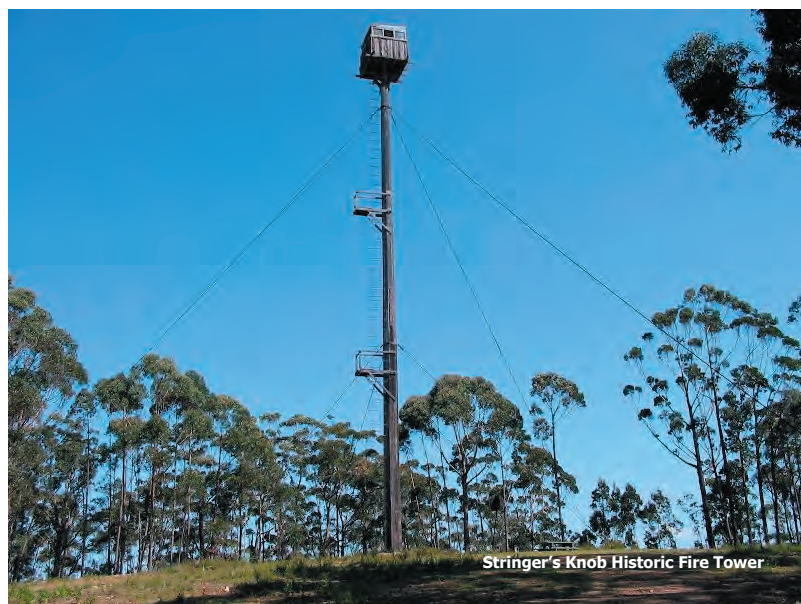
Continue travelling north on the Orbost-Buchan Rd 4.5 kms → **(START of Tour 7)** turn left onto Monument Tk travel 2.5 kms → turn right onto Tower Tk travel 100 m → **Stringers Knob Historic Fire Tower**. This experimental single pole fire tower was built in 1941 following the disastrous 1939 bushfires. The fire spotter's cabin is perched on top of a 28 m tall pole made of 2 massive logs (red iron bark & yellow stringy bark trees) spliced lengthwise.

→ return to Monument Tk turn right travel 5.3 kms → **Mottle Range Flora Reserve**. The only known naturally occurring stand of Spotted Gums, *Eucalyptus maculata*, in Victoria.

→ continue travelling on Monument Tk 0.6 kms → turn left onto Mottle Range Rd travel 9.2 kms → continue south onto Wairewa Rd travel 6.5 kms → **East Gippsland Rail Trail**. [www.eastgippslandrailtrail.com](http://www.eastgippslandrailtrail.com) (at Trestle Bridge). This shared use path has been developed on the abandoned Bairnsdale/Orbost railway corridor for walking, cycling, horse riding.

Continue travelling on Wairewa Rd through Wairewa 1.3 kms → turn left onto the Princes Highway travel 24.3 kms → **Newmerella Picnic Ground**. An old log checking station.

Continue travelling on the Princes Hwy 4.5 kms → turn left to **Orbost**.



Stringer's Knob Historic Fire Tower

**The 4WD track ratings for these tours are advisory only and have been estimated for travel in dry conditions. Even after very light rain, many tracks can become extremely slippery, and more difficult to negotiate safely. The stated ratings may not be accurate after rain or heavy dew, and greater care needs to be exercised.**

**Fieldwork has revealed that odometer readings can vary from +/- 200 metres per 10 kms depending upon the vehicle used. The tour description distance does not include optional side trips.**

Healthy Parks  
Healthy People

Parks  
VICTORIA

EAST GIPPSLAND  
Naturally Magic



A Victorian  
Government  
Project



# Far East Gippsland Back Road Tours

Department of  
Sustainability and  
Environment

## 2 Waratah Loop

**4WD only.**

**A taste of the Snowy, rugged countryside and tall forests.**

**4WD Classification:** Medium

[To Woods Pt & from Youngs Ck: Easy]

**Distance:** 242 kms

**Duration:** Full Day or Overnight

**Further Information:**

Forests Notes- Woods Point Camping Ground

Forests Notes- Young's Creek Picnic Area

Park Notes- Snowy River National Park

**Warnings:** Log Truck Traffic. Should be undertaken by experienced 4WD drivers only. 4WD low range is required with high ground clearance. Some tracks are narrow, rocky and have slippery sections. Varneys Tk into Jacksons Crossing is narrow and involves crossing the Rodger River.

**START at Orbost's Forest Park** turn left onto Nicholson St travel 0.2 kms → turn left onto McLeod St (Orbost Club Hotel) travel straight ahead 0.3 kms → road turns into 'B' Rd (road turns to gravel, goes over a cattle grid following signage to Garnetts Tk travel 10.1 kms → turn right onto Garnetts Tk (continue to veer right) travel 6.6 kms → turn left onto Wood Point Rd travel 4 kms → **Woods Point Picnic & Camping Ground.** Camping on the Snowy River.

→ Returning onto Garnetts Tk travel 21.5 kms → turn right onto Moresford Tk travel 0.9 kms → turn left onto Raymond Creek Falls turnoff travel 0.3 kms → **Raymond Creek Falls Walk.** A 400m walk to the falls that plunge 20m into a pool within a spectacular amphitheatre of volcanic rock.

→ returning onto Moresford Tk turn left travel 8.9 kms → turn left onto Yalmy Rd travel 6.2 kms → turn left onto Varneys Tk travel 6.3 kms → exploring **either**  
→ turn left travel 0.9 kms → **Hicks Campsite.** &/or  
→ turn right (crossing the Rodger River) travel 3.9 kms → before the Snowy River crossing turn right travel 1.7 kms

### DSE regional locations:

**Orbost** 171-173 Nicholson Street, Orbost 3888  
Phone: 03 5161 1222

**Bendoc** Nichol Street, Bendoc 3888  
Phone: 02 6459 0500

**Cann River** Princes Highway, Cann River 3890  
Phone: 03 5158 2100

### DSE Customer Service Centre 136 186

call from anywhere within Australia for the cost of a local call (excluding mobiles and public telephones which incur additional costs) [customer.service@dse.vic.gov.au](mailto:customer.service@dse.vic.gov.au)

### Victorian Bushfire Information Line 1800 240667

© State of Victoria, Department of Sustainability and Environment 2007, 2008. This publication is copyright. No part may be reproduced by any process except in accordance with the provisions of the Copyright Act 1968. ISBN 978-1-74208-808-2 (Print) ISBN 978-1-74208-809-9 (Online)  
This publication may be of assistance to you but the State of Victoria and its employees do not guarantee that the publication is without flaw of any kind or is wholly appropriate for your particular purposes and therefore disclaims all liability for any error, loss or consequence which may arise from you relying on any information in this publication.  
First Published in 2008 by the Victorian Government. Land and Fire, Orbost, East Gippsland Area, Department of Sustainability and Environment. Authorised by the Victorian Government, Melbourne. Printed by E-Gee Printers. Second Edition printed in November 2008. Parks Victoria & East Gippsland Shire Council.



→ **Jacksons Crossing Camping Ground.** Aboriginal relics have been found in this area. It is likely people of the Kruatungulung group of the Kurnai Aborigines hunted this area.

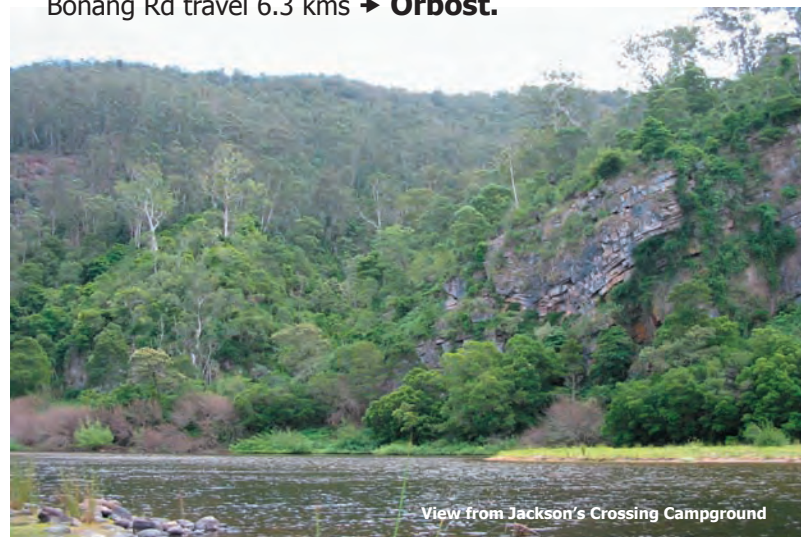
Returning to the Yalmy Rd turn left to continue travelling north 39.1 kms → turn left onto Waratah Flat Rd travel 2.5 kms → **Waratah Flat Campground.** Camping on the Rodger River.

→ continue to travel on Waratah Flat Rd 14.2 kms → turn right onto Monkey Top Tk travel 7.1 kms → turn right onto Yalmy Rd travel 5 kms → turn left onto Mt Jersey Rd travel 9.2 kms → turn right onto 36 Mile Tk travel 10.6 kms → **(END of Tour 7)** turn right onto Bonang Rd travel 11.6 kms → **Martins Creek Scenic Reserve.** Adjoins the Warm Temperate Rainforest, Martins Creek Flora & Fauna Reserve.

→ continue travelling south on the Bonang Rd travel 27.1 kms → turn right onto Cooney Ridge Rd travel 4.9 kms → turn left onto Eleven Bob Tk travel 0.5 kms → **Mt Buck Fire Tower.** Used by DSE over the summer for fire spotting.

→ returning to the Bonang Rd turn right to continue travelling south 3.8 kms → turn left onto Coulsons Rd travel 4.6 kms → turn right onto Iron Chimney Tk travel 2.1 kms → turn left onto Storers Tk → **Youngs Creek Picnic Area.** Includes walks to a waterfall and the old Orbost water reservoir.

From the carpark turn back onto Storers Tk travel 2.5 kms → turn left onto 4.5 Mile Tk travel 2.3 kms → turn left onto Bonang Rd travel 6.3 kms → **Orbost.**



View from Jackson's Crossing Campground

**The 4WD track ratings for these tours are advisory only and have been estimated for travel in dry conditions. Even after very light rain, many tracks can become extremely slippery, and more difficult to negotiate safely. The stated ratings may not be accurate after rain or heavy dew, and greater care needs to be exercised.**

**Fieldwork has revealed that odometer readings can vary from +/- 200 metres per 10 kms depending upon the vehicle used. The tour description distance does not include optional side trips.**

Healthy Parks  
Healthy People

Parks  
VICTORIA

EAST GIPPSLAND  
Nature's Magic

Australia's Coastal  
Wilderness  
Experience Something Wild



A Victorian  
Government  
Project

Victoria  
The Place To Be



# Far East Gippsland Back Road Tours

Department of  
Sustainability and  
Environment

## 3 Murrungowar Forest Drive

**2WD in dry weather only.**  
**An insight into how forests are managed for conservation and timber harvesting.**

**4WD Classification:** Easy 

**Distance:** 31 kms

**Duration:** Easy Half Day

**Further Information:**

Forests Notes- Murrungowar Forest Drive

**Warnings:** Log Truck Traffic. A moderate grade becoming slippery during wet weather.

**START at Murrungowar Picnic Ground** on the Princes Hwy (approximately 17 kms) east of Orbost. Follow the Forest Drive signs turning right onto Murrungowar Rd travel 4.2 km ➔ **Old Growth Banksia Woodland.**

Saw Banksias dominate identified by their serrated leaves.

➔ continue travelling on Murrungowar Rd 1 km ➔ **Seedtree Harvesting.** Refer to Stop 2 Forests Notes.

➔ continue travelling on Murrungowar Rd 2.9 km ➔ **(START of Tour 4)** turn right onto Jirrah Tk travel 0.2 km ➔ **Murrungowar Settlement.** Once a thriving settlement with promise of a railway.

➔ continue travelling on Jirrah Tk 0.5 km ➔ turn left onto Tarlton Tk travel 1.4 km ➔ **Blue Gum Plantation.** One of few plantations of this age on public land in East Gippsland.

➔ continue travelling on Tarlton Tk 0.8 km ➔ **Little Cabbage Tree Falls Picnic Area.** A 30 min return walk to the waterfall.

➔ continue travelling on Tarlton Tk travel 2.8 kms ➔ turn left onto Dyers Creek Rd 0.6 kms ➔ **Thinning Harvesting.** 'Thinned' in 1999. Refer to Stop 5 Forests Notes.



Falls Creek Memorial Trail

➔ continue travelling on Dyers Creek Rd 0.9 kms ➔ **Warm Temperate Rainforest.** Occurs in absence of fire.

➔ continue travelling on Dyers Creek Rd 1.6 kms ➔ **Extensive Regrowth Stand.** Harvested in 1974.

➔ continue travelling on Dyers Creek Rd 1.1 km ➔ turn right onto Towzer Creek Tk 1 km ➔ **Mature Silvertop Ash Damp Forest.** Over 250 years old.

➔ continue travelling on Towzer Creek Tk 3.7 kms ➔ **Cabbage Tree Creek Linear Reserve.**

➔ continue travelling on Towzer Creek Tk 1.1 kms ➔ turn right onto Falls Creek Tk No.1 travel 1.4 kms ➔ turn right onto 4 Lane Hwy (Tk) travel 1 km ➔ **Silvicultural Systems Project.** Aiming to determine the feasibility of alternatives to clear felling. Refer to Stop 10 Forests Notes.

➔ turn left onto Centre Rd travel 1.2 kms ➔ turn left onto Anarchy Ave travel 2 kms ➔ turn left onto Winter Rd travel 0.5 kms ➔ **Falls Creek Memorial Trail.** Walk 800m return through stringybarks and fern gullies to falls.

➔ continue travelling on Winter Rd 0.8 kms ➔ turn left onto Emphield Tk travel 1.8 kms ➔ Princes Hwy intersection ➔ **Tour END.** Turn right (travel 32 kms) **Orbost** OR turn left (travel 43 kms) to **Cann River.**



Blue Gum Plantation

### DSE regional locations:

**Orbost** 171-173 Nicholson Street, Orbost 3888  
Phone: 03 5161 1222

**Bendoc** Nichol Street, Bendoc 3888  
Phone: 02 6459 0500

**Cann River** Princes Highway, Cann River 3890  
Phone: 03 5158 2100

### DSE Customer Service Centre 136 186

call from anywhere within Australia for the cost of a local call (excluding mobiles and public telephones which incur additional costs) [customer.service@dse.vic.gov.au](mailto:customer.service@dse.vic.gov.au)

### Victorian Bushfire Information Line 1800 240667

© State of Victoria, Department of Sustainability and Environment 2007, 2008. This publication is copyright. No part may be reproduced by any process except in accordance with the provisions of the Copyright Act 1968. ISBN 978-1-74208-808-2 (Print) ISBN 978-1-74208-809-9 (Online)  
This publication may be of assistance to you but the State of Victoria and its employees do not guarantee that the publication is without flaw of any kind or is wholly appropriate for your particular purposes and therefore disclaims all liability for any error, loss or consequence which may arise from you relying on any information in this publication.  
First Published in 2008 by the Victorian Government. Land and Fire, Orbost, East Gippsland Area, Department of Sustainability and Environment. Authorised by the Victorian Government, Melbourne. Printed by E-Gee Printers. Second Edition printed in November 2008. Parks Victoria & East Gippsland Shire Council.

**The 4WD track ratings for these tours are advisory only and have been estimated for travel in dry conditions. Even after very light rain, many tracks can become extremely slippery, and more difficult to negotiate safely. The stated ratings may not be accurate after rain or heavy dew, and greater care needs to be exercised.**

**Fieldwork has revealed that odometer readings can vary from +/- 200 metres per 10 kms depending upon the vehicle used. The tour description distance does not include optional side trips.**

Healthy Parks  
Healthy People

Parks  
VICTORIA

EAST GIPPSLAND  
Naturally Magic



A Victorian  
Government  
Project





# Far East Gippsland Back Road Tours

Department of  
Sustainability and  
Environment

## 4 Murrungowar Errinundra Loop

**4WD only.**  
**Spectacular views amidst both the cool and warm temperate rainforest.**

**4WD Classification:** Easy

**Distance:** 132 kms

**Duration:** Full Day

**Further Information:**

Park Notes- Errinundra National Park

Park Notes- Lind National Park, Euchre Valley Nature Drive

**Warnings:** Log Truck Traffic.

Seasonal road closures- BA Rd, Greens Rd.

Mainly high range 4WD but low range required. Some tracks are narrow, rocky and have slippery sections.

**START** on **Tour 3** route (intersection of Murrungowar Rd and Jirrah Tk).

Continue travelling north on Murrungowar Rd 11.9 kms → turn right onto Glen Arte Rd travel 2.4 kms → **Glen Arte Flora Reserve.**

The Arte River is a tributary of the Bemm River. Both rivers are classified as Heritage Rivers. The reserve has elements of the integration of Warm and Cool Temperate Rainforest occurring and is of State Significance.

Continue travelling on Glen Arte Rd 3.8 kms → **Timber Fallers Hut.**

Turn left onto Metal Link Tk travel 3.5 kms → turn left onto Metal Rd travel 500 m → **Arte River Falls.**

Below the bridge, the Arte River descends into a series of pools. There is no established track here and rocks are extremely slippery.

Continue travelling on Metal Rd 2 kms → turn right onto Greens Rd travel 6.2 kms → turn left onto Jack Rd travel 2.3 kms → turn left travel 400 m → **Mt Jack (helipad) Lookout.** Views of the ocean and lakes extending north, west and east.



Gippsland Waratah, *Telopea oreades*

Return to Jack Rd continue to travel 11.7 kms → turn right onto Sardine Creek Rd travel 6.2 kms → turn right onto Big River Rd travel 14.3 kms → **Mt Ellery Walk.** A difficult, steep 4 km walk, 2hrs return. Views from a summit of Granite Tors.

Continue travelling on Big River Rd 3.6 kms → turn right onto BA Rd travel 5.1 kms → turn left onto Greens Rd 2.2 kms → **Ocean View Lookout.** Views over Goolengook old growth forest.

Continue travelling on Greens Rd 5 kms → **Mt Morris Picnic Area. (END of Tour 5)** Includes a 2 km 1 hr return walk to the granite outcrop that extends into the rainclouds.

Turn right at Errinundra Rd travel 18.5 kms → **Ada River Camping Ground.** Pleasant site on the crystal clear Ada river.

Continue travelling on Errinundra Rd 12.4 kms → turn right at Combienbar Rd travel 12 kms (through Club Terrace) → turn left → **Lind National Park.** See Park Note.

→ travel on **Euchre Valley Nature Drive** 2.2 kms **Growlers Picnic Area** → continue to travel south 4.5 kms → turn right travel 300 m → Princes Hwy → **Tour END.**

EITHER turn right (travel 59 kms) to **Orbost** OR turn left (travel 16 kms) to **Cann River.**



Arte River Flora Reserve

### DSE regional locations:

**Orbost** 171-173 Nicholson Street, Orbost 3888  
Phone: 03 5161 1222

**Bendoc** Nichol Street, Bendoc 3888  
Phone: 02 6459 0500

**Cann River** Princes Highway, Cann River 3890  
Phone: 03 5158 2100

### DSE Customer Service Centre 136 186

call from anywhere within Australia for the cost of a local call (excluding mobiles and public telephones which incur additional costs) [customer.service@dse.vic.gov.au](mailto:customer.service@dse.vic.gov.au)

### Victorian Bushfire Information Line 1800 240667

© State of Victoria, Department of Sustainability and Environment 2007, 2008. This publication is copyright. No part may be reproduced by any process except in accordance with the provisions of the Copyright Act 1968. ISBN 978-1-74208-808-2 (Print) ISBN 978-1-74208-809-9 (Online)  
This publication may be of assistance to you but the State of Victoria and its employees do not guarantee that the publication is without flaw of any kind or is wholly appropriate for your particular purposes and therefore disclaims all liability for any error, loss or consequence which may arise from you relying on any information in this publication.  
First Published in 2008 by the Victorian Government. Land and Fire, Orbost, East Gippsland Area, Department of Sustainability and Environment. Authorised by the Victorian Government, Melbourne. Printed by E-Gee Printers. Second Edition printed in November 2008. Parks Victoria & East Gippsland Shire Council.

**The 4WD track ratings for these tours are advisory only and have been estimated for travel in dry conditions. Even after very light rain, many tracks can become extremely slippery, and more difficult to negotiate safely. The stated ratings may not be accurate after rain or heavy dew, and greater care needs to be exercised.**

**Fieldwork has revealed that odometer readings can vary from +/- 200 metres per 10 kms depending upon the vehicle used. The tour description distance does not include optional side trips.**

Healthy Parks  
Healthy People

Parks  
VICTORIA

EAST GIPPSLAND  
Naturally Magic

Australia's Coastal  
Wilderness  
Embrace Something Wild



A Victorian  
Government  
Project

Victoria  
The Place To Be



# Far East Gippsland Back Road Tours

Department of  
Sustainability and  
Environment

## 5 Combienbar East Errinundra

**4WD only.**  
**A picturesque route to  
eastern Errinundra.**

**4WD Classification:** Medium

**Distance:** 111 kms

**Duration:** Full Day or overnight

**Further Information:**

Forests Notes- Tennyson Picnic and Camping Area

Park Notes- Errinundra National Park

**Warnings:** Log Truck Traffic

Seasonal road closures- Goonmirk Rd, Hensleigh Creek Rd,  
and Tennyson Tk.

Tennyson Tk is steep, rocky and slippery requiring low range  
4WD with high ground clearance. A moderately difficult  
route to be travelled with care and by experienced drivers.

**START** on **Tour 4** route (intersection of Errinundra and  
Combienbar Rd 11.7 kms north of Club Terrace).

Turn right to Combienbar Rd travel 12.9 kms → turn right  
onto Staggs Creek Rd travel 5.3 kms → turn left onto Three  
Sisters Rd travel 13.7 kms → turn right onto Lookout Rd  
travel 0.9 kms → **Three Sisters Lookout.**

Enjoy the view back over the Combienbar Valley to the west  
from the Three Sisters, an outcrop of Upper Devonian Cann River  
sedimentary beds of conglomerates & sandstone.

Returning onto Three Sisters Rd turn right and continue to  
travel north 4.8 kms → turn right onto Buldah Trail travel 8.9  
kms → turn left onto Buldah Road travel 3.4 kms → turn left  
onto Tennyson Tk travel (following fence for first 0.8 kms  
then veer left) total 4.3 kms → **Tennyson Campsite.**

This campsite on the Tennyson Creek is within an area of known  
Powerful Owl habitat and negligibly disturbed streamside forest.

Continue travelling on Tennyson Tk 6 kms → turn right onto  
Granite Mountain Rd travel 0.8 kms → turn left onto Coast  
Range Rd travel 14.9 kms →



View from Three Sisters Lookout

**[Optional Side Trip:** Continue travelling 2.5 kms → turn  
right travel 400m → **Frosty Hollow Campsite]**

Turn north onto Hensleigh Creek Rd travel 9.2 kms →

**Queensborough River Picnic Area.**

The Queensborough River flows north into the Delegate River  
which forms part of the upper Snowy River catchment before the  
river flows westerly and then southerly to Bass Strait.

Continue travelling on Hensleigh Creek Rd 3.9 kms → turn  
left onto Goonmirk Rocks Rd travel 7.6 kms → **Goonmirk  
Rocks.** A short walk amongst thickets of Mountain Plum-pine.

→ continue travelling on Goonmirk Rocks Rd 1.2 kms →  
turn left onto Gunmark Rd travel 5.2 kms → turn left  
onto Errinundra Rd travel 1.9 kms → turn left travel 50 m →  
**Errinundra Saddle.** This picnic area is the main visitor focus  
for the park. Featuring a high quality interpretative display of the  
Park's outstanding natural values and an easy 1 km rainforest walk.

Continue travelling on Errinundra Rd 4.7 kms → **Mt Morris  
Picnic Area.** Includes a 2 km 1 hr return walk to the granite  
outcrop. Errinundra Plateau is a south east extension of the Monaro  
Tablelands and contains three granite outcrops: Mt Morris, Mt Ellery  
and Cobbs Hill which extend into the rainclouds causing much of  
the rain which falls in the catchment areas.

**Tour END.** Return to Princes Hwy on **Tour 4** route.



Buldah Trail

### DSE regional locations:

**Orbost** 171-173 Nicholson Street, Orbost 3888  
Phone: 03 5161 1222

**Bendoc** Nichol Street, Bendoc 3888  
Phone: 02 6459 0500

**Cann River** Princes Highway, Cann River 3890  
Phone: 03 5158 2100

### DSE Customer Service Centre 136 186

call from anywhere within Australia for the cost of a local call (excluding mobiles and public  
telephones which incur additional costs) customer.service@dse.vic.gov.au

### Victorian Bushfire Information Line 1800 240667

© State of Victoria, Department of Sustainability and Environment 2007, 2008. This publication is  
copyright. No part may be reproduced by any process except in accordance with the provisions of the  
Copyright Act 1968. ISBN 978-1-74208-808-2 (Print) ISBN 978-1-74208-809-9 (Online)

This publication may be of assistance to you but the State of Victoria and its employees do not  
guarantee that the publication is without flaw of any kind or is wholly appropriate for your particular  
purposes and therefore disclaims all liability for any error, loss or consequence which may arise from  
you relying on any information in this publication.

First Published in 2008 by the Victorian Government. Land and Fire, Orbost, East Gippsland Area,  
Department of Sustainability and Environment. Authorised by the Victorian Government, Melbourne.  
Printed by E-Gee Printers. Second Edition printed in November 2008. Parks Victoria & East Gippsland  
Shire Council.

**The 4WD track ratings for these tours are advisory only and  
have been estimated for travel in dry conditions. Even after  
very light rain, many tracks can become extremely slippery, and  
more difficult to negotiate safely. The stated ratings may not be  
accurate after rain or heavy dew, and greater care needs to be  
exercised.**

**Fieldwork has revealed that odometer readings can vary from  
+/- 200 metres per 10 kms depending upon the vehicle used. The  
tour description distance does not include optional side trips.**

Healthy Parks  
Healthy People

Parks  
VICTORIA

EAST GIPPSLAND  
Naturally Magic



A Victorian  
Government  
Project





# Far East Gippsland Back Road Tours

Department of  
Sustainability and  
Environment

## 6 Bendoc Historic Loop Drive

**4WD only.**  
**A rich history of alluvial and reef gold mining.**

**4WD Classification:** Easy ●

**Distance:** 73 kms

**Duration:** Half Day

**Further Information:**

Forests Notes: Bendoc Historic Loop Drive

Park Notes: Errinundra National Park

**Warnings:** Log Truck Traffic.

Seasonal Road Closure- Goonmirk Rd

Open mine shafts.

**START at The Gap Scenic Reserve** (Bonang Rd/Gap Rd intersection) 84 kms north of Orbost.

Follow Gap Rd travel 6.2 kms → turn left onto Playgrounds Rd travel 6.5 kms → turn right onto Bonang-Bendoc Rd travel 4.4 kms → turn left onto Pretty Gully Tk travel 0.9 kms → turn right (following signs to tunnel) travel 400 m → **Delegate River Tunnel Picnic Area.**

The tunnel is a significant & well preserved example of alluvial mining technology used in the gold rush era. It was cut to divert the water course allowing the exposed river bed to be worked.

→ Return onto Bonang-Bendoc Rd turn left travel 9 kms → turn right onto Haydens Bog/Lower Bendoc Rd travel 0.7 kms → **Bendoc Historic Park.** Contains numerous relics from early European settlement along with interpretive information about aboriginal cultural heritage. Bendoc is the only community in Australia to own one of the few surviving Union (non-denominational) Churches as trustees.

Continue travelling on the Haydens Bog/Lower Bendoc Rd 100 m → turn right onto Jamieson St/ Clarkesville Rd (at pub) travel 4 kms → turn left onto Marriot Tk travel 1.4 kms (veering left) → **Wilson's Hut.**

A rare surviving slab hut made from the region's forest timbers.

### DSE regional locations:

**Orbost** 171-173 Nicholson Street, Orbost 3888  
Phone: 03 5161 1222

**Bendoc** Nichol Street, Bendoc 3888  
Phone: 02 6459 0500

**Cann River** Princes Highway, Cann River 3890  
Phone: 03 5158 2100

### DSE Customer Service Centre 136 186

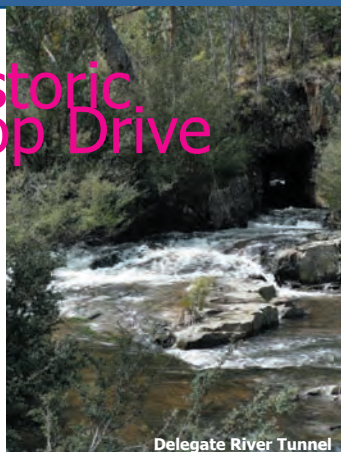
call from anywhere within Australia for the cost of a local call (excluding mobiles and public telephones which incur additional costs) [customer.service@dse.vic.gov.au](mailto:customer.service@dse.vic.gov.au)

### Victorian Bushfire Information Line 1800 240667

© State of Victoria, Department of Sustainability and Environment 2007, 2008. This publication is copyright. No part may be reproduced by any process except in accordance with the provisions of the Copyright Act 1968. ISBN 978-1-74208-808-2 (Print) ISBN 978-1-74208-809-9 (Online)

This publication may be of assistance to you but the State of Victoria and its employees do not guarantee that the publication is without flaw of any kind or is wholly appropriate for your particular purposes and therefore disclaims all liability for any error, loss or consequence which may arise from you relying on any information in this publication.

First Published in 2008 by the Victorian Government. Land and Fire, Orbost, East Gippsland Area, Department of Sustainability and Environment. Authorised by the Victorian Government, Melbourne. Printed by E-Gee Printers. Second Edition printed in November 2008. Parks Victoria & East Gippsland Shire Council.



Delegate River Tunnel

→ Returning to Clarkeville Rd turn left travel 0.9 kms → **Victoria Star Historic Mine Area.** The Victoria Reef was originally worked in 1869. A rich lode was discovered in 1909. From 1911, this mine worked the highest-yielding reef in East Gippsland. Site features include mullock heaps, mine workings, machinery foundations, remains of a battery and a portable steam engine.

→ Continue travelling south onto Clarkeville Rd travel 4.8 kms → turn right onto Aspen's Battery Tk travel 1.8 kms → **Jungle King Mine.** This is a fine example of a quartz mining shaft which commenced operation in 1889.

→ Returning onto Clarkeville Rd travel 4.8 kms → turn right onto Goonmirk Rocks Rd travel 4.9 kms → **Goonmirk Rocks.** A short walk to an interesting granite rocky outcrop featuring the ancient Mountain Plum Pine, *Podocarpus lawrencei*.

→ Continue travelling on Goonmirk Rocks Rd 1.2 kms → turn right onto Gunmark Rd travel 6.4 kms → **Tea Tree Flat Picnic Area.** On the Delegate River featuring sphagnum moss & heath plants.

→ Continue travelling on Gunmark Rd 4.3 kms → turn left onto Gap Rd travel 5.5 kms → **Gap Scenic Reserve. Tour END.**  
Turn left onto Bonang Rd (travel approximately 84 kms) → **Orbost.**



Wilson's Hut

**The 4WD track ratings for these tours are advisory only and have been estimated for travel in dry conditions. Even after very light rain, many tracks can become extremely slippery, and more difficult to negotiate safely. The stated ratings may not be accurate after rain or heavy dew, and greater care needs to be exercised.**

**Fieldwork has revealed that odometer readings can vary from +/- 200 metres per 10 kms depending upon the vehicle used. The tour description distance does not include optional side trips.**

Healthy Parks  
Healthy People

Parks  
VICTORIA

EAST GIPPSLAND  
Nature's Magic



A Victorian  
Government  
Project





# Far East Gippsland Back Road Tours

Department of  
Sustainability and  
Environment

## 7 The Mighty Snowy

**4WD only.**  
**Experience the legendary Snowy River country.**

**4WD Classification:** Easy  
**Distance:** 229 kms  
**Duration:** Full day or overnight.  
**Further Information:**

Park Notes- Snowy River Nat. Park

Park Notes- Silver Mine Walking Track, SRNP

Park Notes- Snowy River Nature Walk, SRNP

**Warnings:** Log Truck Traffic. The descent beyond Little River Gorge into McKillops Bridge is one of Victoria's most precarious roads, unsuitable for trailers and caravans.

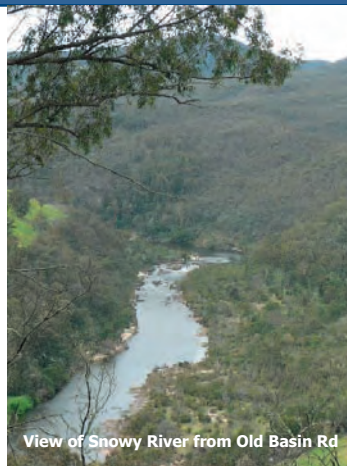
**START** on **Tour 1** route (intersection of Orbost-Buchan Rd and Monument Tk).

Continue travelling north on the Orbost-Buchan Rd travel 25.3 kms → turn right onto Basin Rd travel 3.3 kms → turn right onto Old Basin Rd travel 2.8 kms → turn right onto Balley Hooley Rd travel 4.6 kms → **Balley Hooley**. River access at the confluence of the Buchan and Snowy River.

Return to the intersection and turn right (north) onto Old Basin Rd travel 2.3 kms → **Basin Creek Falls**. Spectacular views on route and walk to the falls.

Return to the intersection and turn right onto Balley Hooley Rd travel 3.5 kms → turn right onto Basin Rd travel 20 m → turn left onto Tulloch Ard Rd travel 23.2 kms → turn right onto Betts Creek Tk travel 100 m → **Ash Saddle Walking Track & Picnic Area**. A 750 m interpretive walk taking approximately 45 minutes.

Returning to Tulloch Ard Rd turn right (enjoying spectacular views on route) travel 20.7 kms → turn right onto the Gelantipy Rd travel 17.7 kms → turn right onto the McKillops Rd travel 8.7 kms → **Little River Falls**. A 400m lookout over the spectacular falls lookout.



View of Snowy River from Old Basin Rd

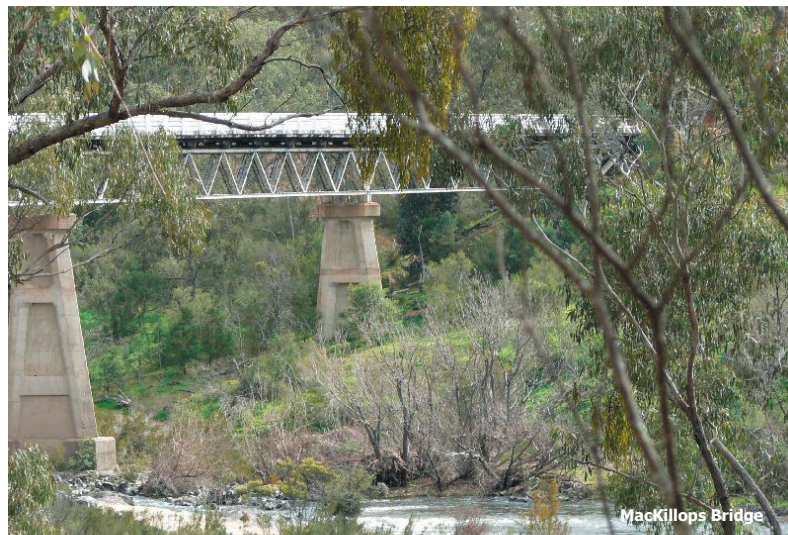
Continue on McKillops Rd travel 3 kms → turn right travel 400m → **Little River Gorge**. Victoria's deepest gorge, a 400 metre walking track leads to an awe-inspiring cliff-top lookout.

Returning to McKillops Rd continue to travel with caution 16.5 kms → **MacKillops Bridge**. The original bridge was built in 1931-32 and washed away in the January 1934 floods. The bridge reopened in 1935 and is a popular camping area.

Continue travelling on McKillops Rd (past camping sites following the Deddick River) travel 20.7 kms → turn left travel 200 m → **Ambyne Suspension Bridge**. Interpretative signage of recently restored bridge and picnic area.

Continue eastward travel 3.8 kms → **Willow Picnic Area**. Continue eastward travel 2.4 kms → **Tubbut**. Continue eastward travel 3.4 kms → **Wattle Camp Picnic Area**. Continue eastward travel 5.9 kms → **Taylors Camp Picnic Area**. Continue eastward travel 1.4 kms → turn left at Dellicknora Rd travel 300m → **Jingalalla River Picnic Area**. Return to McKillops Rd turn left travel 14.8 kms → (Bonang Store on left) turn right at Bonang Rd travel 23.8 kms → turn left onto Ellery Creek Tk travel 200 m → **Goongerah Camping Ground & Picnic Area**. Enjoy this tranquil camp on Ellery Creek.

Continue travelling south on Bonang Rd travel 11.9 kms → **Tour END**. Return to Orbost on **Tour 2** route.



MacKillops Bridge

### DSE regional locations:

**Orbost** 171-173 Nicholson Street, Orbost 3888  
Phone: 03 5161 1222

**Bendoc** Nichol Street, Bendoc 3888  
Phone: 02 6459 0500

**Cann River** Princes Highway, Cann River 3890  
Phone: 03 5158 2100

### DSE Customer Service Centre 136 186

call from anywhere within Australia for the cost of a local call (excluding mobiles and public telephones which incur additional costs) customer.service@dse.vic.gov.au

### Victorian Bushfire Information Line 1800 240667

© State of Victoria, Department of Sustainability and Environment 2007, 2008. This publication is copyright. No part may be reproduced by any process except in accordance with the provisions of the Copyright Act 1968. ISBN 978-1-74208-808-2 (Print) ISBN 978-1-74208-809-9 (Online)  
This publication may be of assistance to you but the State of Victoria and its employees do not guarantee that the publication is without flaw of any kind or is wholly appropriate for your particular purposes and therefore disclaims all liability for any error, loss or consequence which may arise from you relying on any information in this publication.  
First Published in 2008 by the Victorian Government. Land and Fire, Orbost, East Gippsland Area, Department of Sustainability and Environment. Authorised by the Victorian Government, Melbourne. Printed by E-Gee Printers. Second Edition printed in November 2008. Parks Victoria & East Gippsland Shire Council.

**The 4WD track ratings for these tours are advisory only and have been estimated for travel in dry conditions. Even after very light rain, many tracks can become extremely slippery, and more difficult to negotiate safely. The stated ratings may not be accurate after rain or heavy dew, and greater care needs to be exercised.**

**Fieldwork has revealed that odometer readings can vary from +/- 200 metres per 10 kms depending upon the vehicle used. The tour description distance does not include optional side trips.**

Healthy Parks  
Healthy People

Parks  
VICTORIA

EAST GIPPSLAND  
Naturally Magic

Australia's Coastal  
Wilderness  
Embrace Something Wild



A Victorian  
Government  
Project

Victoria  
The Place To Be



# Far East Gippsland Back Road Tours

Department of  
Sustainability and  
Environment

## 8 Coopracambra Link

**4WD only.**

**Open forests of white & red stringybark on the ridges.**

**4WD Classification:** Easy

**Distance:** 62 kms

**Duration:** Half day

**Further Information:**

Forests Notes- Drummer Rainforest Walk

Park Notes- Coopracambra National Park

**Warnings:** Log Truck Traffic

**START at Chandlers Creek Picnic Area** on WB Line Rd (East of the Monaro Hwy, 28.6 kms north of **Cann River**) A picnic area on the scenic Cann River at Chandlers Creek.

Continue travelling on WB Line Rd 2.1 kms ➔ **Beehive Falls.**

A 300m return walking track to the picturesque cascading falls.

Continue travelling on WB Line Rd 7.2 kms ➔ **Yambulla Walking Track.**

3hrs one way to Genoa River. Moderate Fitness Required.

Continue travelling on WB Line Rd 11.5 kms ➔ turn left onto Helipad Rd travel 0.1 kms ➔ **Mealing Hill.** Striking views of the surrounding area.

Return to WB Line Rd turn left travel 6.3 kms ➔

**[Optional Side Trip:** Turn left onto Ivor Tk travel 2.4 kms to carpark ➔ **Walk to Genoa River.** Approx. 1 km / 15 minute walk.]



Beehive Falls

Continue travelling east on WB Line Rd 2.3 kms ➔ veer right onto Jones Creek Rd travel 5 kms ➔ turn right onto Drummer Rd travel 7.4 kms ➔ **Hidden Picnic Area.** Picnic on the Wingan River West Branch.

Continue travelling south on Drummer Rd 20 kms ➔ **Drummer Rainforest Picnic Area.**

Walk an easy moss lined track through rainforest over the tranquil Thurra River taking 45 mins return. Lining the banks of the Thurra River is Gallery Rainforest. Twisted trunks of Kanooka draped in lichen overhang the river creating a 'tunnel-like' gallery.

**Tour END.**

EITHER

Proceed on **Tour 9 to Mallacoota.**

OR

Continue travelling south on Drummer Rd (200 m) ➔ Princes Hwy intersection EITHER

➔ turn right (travel 12 kms ) to **Cann River** OR

➔ turn left to **Mallacoota** via **Genoa.**



WB Line Rd

### DSE regional locations:

**Orbost** 171-173 Nicholson Street, Orbost 3888  
Phone: 03 5161 1222

**Bendoc** Nichol Street, Bendoc 3888  
Phone: 02 6459 0500

**Cann River** Princes Highway, Cann River 3890  
Phone: 03 5158 2100

### DSE Customer Service Centre 136 186

call from anywhere within Australia for the cost of a local call (excluding mobiles and public telephones which incur additional costs) customer.service@dse.vic.gov.au

### Victorian Bushfire Information Line 1800 240667

© State of Victoria, Department of Sustainability and Environment 2007, 2008. This publication is copyright. No part may be reproduced by any process except in accordance with the provisions of the Copyright Act 1968. ISBN 978-1-74208-808-2 (Print) ISBN 978-1-74208-809-9 (Online)  
This publication may be of assistance to you but the State of Victoria and its employees do not guarantee that the publication is without flaw of any kind or is wholly appropriate for your particular purposes and therefore disclaims all liability for any error, loss or consequence which may arise from you relying on any information in this publication.  
First Published in 2008 by the Victorian Government. Land and Fire, Orbost, East Gippsland Area, Department of Sustainability and Environment. Authorised by the Victorian Government, Melbourne. Printed by E-Gee Printers. Second Edition printed in November 2008. Parks Victoria & East Gippsland Shire Council.

**The 4WD track ratings for these tours are advisory only and have been estimated for travel in dry conditions. Even after very light rain, many tracks can become extremely slippery, and more difficult to negotiate safely. The stated ratings may not be accurate after rain or heavy dew, and greater care needs to be exercised.**

**Fieldwork has revealed that odometer readings can vary from +/- 200 metres per 10 kms depending upon the vehicle used. The tour description distance does not include optional side trips.**

Healthy Parks  
Healthy People

Parks  
VICTORIA

EAST GIPPSLAND  
Naturally Magic



A Victorian  
Government  
Project





# Far East Gippsland Back Road Tours

Department of  
Sustainability and  
Environment

## 9 Wigan Mallacoota Scenic Drive

**4WD only.**  
**A scenic alternative route to Mallacoota.**

**4WD Classification:** Easy ●

**Distance:** 82 kms

**Duration:** Half day

**Further Information:**

Park Notes- Alfred National Park

Park Notes- Croajingolong National Park including Walks around Shipwreck Creek

Park Notes- Mallacoota Inlet and surrounds

**Warnings:** Log Truck Traffic.

Seasonal Road Closure- Betka Tk

Creek crossing on Hard to Seek Tk.

**START at Drummer River Rainforest Picnic Area**  
(200 m north of the Princes Hwy approximately 12 kms) east of Cann River.

Travelling south on Drummer Rd 200 m ➔ turn left onto the Princes Hwy (the next intersection can be easily missed. Look out for Horseshoe Rd on left of highway, the next intersection is approximately 1 km after this) travel total 6.2 kms ➔ turn right onto West Wigan Rd ➔ **Alfred National Park.** The park is recognised for the protection of distinct vegetation communities, in particular Warm Temperate Rainforest, which is of national significance.

On West Wigan Rd travel 15.9 kms ➔ turn left onto Wigan Link Rd travel 12.2 kms ➔ **Wigan Link Picnic Area.**  
A picnic area on the scenic Wigan River.

Continue travelling on Wigan Link Rd 2.1 kms ➔ turn right onto East Wigan Rd travel 0.4 kms ➔ veer left onto Hard to Seek Tk travel 6.5 kms ➔ creek crossing (on a granite rock base) travel 2.9 kms ➔ intersection with Stony Peak Rd

**[OPTIONAL SIDE TRIP:** Continue on Hard to Seek Tk



travel 8.5 kms ➔ turn right onto Genoa Peak Rd travel 1.5 kms ➔ **Genoa Peak.** A moderate to steep 1.5 km walk taking 2 hrs return for spectacular 360 degree views over Mallacoota and Croajingolong National Park. Return to Hard to Seek/Stony Peak intersection turn left.]

From the Hard to Seek Tk / Stony Peak Rd intersection. Turn south onto Stony Peak Rd travel 5.7 kms ➔ **Croajingolong National Park.** A UNESCO declared World Biosphere Reserve and one of Victoria's icon parks.

Turn left onto Betka Tk travel 13.6 kms ➔ **Shipwreck Creek Campground.** Enjoy a number of walking tracks from remote sandy beaches and heathlands to rocky coastline. Along these walks are views of Gabo Island and the Howe Range.

Returning along Betka Tk travel 2.8 kms ➔ turn right onto Centre Tk travel 4.4 kms ➔ turn right onto to Betka Rd travel 4.7 kms ➔ **Betka Beach.**  
A popular beach where the Betka River flows into Bass Strait.

Continue travelling on Betka Rd 3.5 kms ➔ **Mallacoota.** Crossing the Betka River arriving at the coastal township of Mallacoota, a popular holiday destination. Mallacoota Inlet provides opportunities for boating, fishing, walking and picnics. Swimming spots are located along the beaches of the Mallacoota Foreshore Reserve and Tip Beach offers great surfing. Bastion Point Lookout provides great views over the Mallacoota Inlet entrance, Gabo Island and the Howe Ranges.



**The 4WD track ratings for these tours are advisory only and have been estimated for travel in dry conditions. Even after very light rain, many tracks can become extremely slippery, and more difficult to negotiate safely. The stated ratings may not be accurate after rain or heavy dew, and greater care needs to be exercised.**

**Fieldwork has revealed that odometer readings can vary from +/- 200 metres per 10 kms depending upon the vehicle used. The tour description distance does not include optional side trips.**

### DSE regional locations:

**Orbost** 171-173 Nicholson Street, Orbost 3888  
Phone: 03 5161 1222

**Bendoc** Nichol Street, Bendoc 3888  
Phone: 02 6459 0500

**Cann River** Princes Highway, Cann River 3890  
Phone: 03 5158 2100

### DSE Customer Service Centre 136 186

call from anywhere within Australia for the cost of a local call (excluding mobiles and public telephones which incur additional costs) [customer.service@dse.vic.gov.au](mailto:customer.service@dse.vic.gov.au)

### Victorian Bushfire Information Line 1800 240667

© State of Victoria, Department of Sustainability and Environment 2007, 2008. This publication is copyright. No part may be reproduced by any process except in accordance with the provisions of the Copyright Act 1968. ISBN 978-1-74208-808-2 (Print) ISBN 978-1-74208-809-9 (Online)  
This publication may be of assistance to you but the State of Victoria and its employees do not guarantee that the publication is without flaw of any kind or is wholly appropriate for your particular purposes and therefore disclaims all liability for any error, loss or consequence which may arise from you relying on any information in this publication.  
First Published in 2008 by the Victorian Government. Land and Fire, Orbost, East Gippsland Area, Department of Sustainability and Environment. Authorised by the Victorian Government, Melbourne. Printed by E-Gee Printers. Second Edition printed in November 2008. Parks Victoria & East Gippsland Shire Council.

Healthy Parks  
Healthy People

Parks  
VICTORIA

EAST GIPPSLAND  
Naturally Magic



A Victorian  
Government  
Project





# Far East Gippsland Back Road Tours

Department of  
Sustainability and  
Environment

## 10 Heritage Bemm River

**2WD in dry weather only.**  
**Discover a variety of flora and magnificent rainforest.**

**4WD Classification:** Easy **2WD**

**Distance:** 113 kms

**Duration:** Half Day

**Further Information:**

Park Notes- Bemm River Scenic Reserve

Park Notes- Lind National Park, Euchre Valley Nature Drive

**Warnings:** Log Truck Traffic, one tonne bridge limit on Bemm River bridge on Club Terrace Loop Rd.

Seasonal road closure- Old Coast Road (This road can be impassable in wet weather).

**START at Mt Raymond Lookout.** (travel east from Orbost on the Princes Hwy approximately 14 kms → turn right onto Lookout Rd travel 2 kms). Magnificent views over the Snowy River floodplain.

Return to the Princes Hwy turn right travel 2.1 kms → **Murrungowar Picnic Ground.** Popular roadside stop.

Continue travelling east on the Princes Hwy 3.2 kms → turn right onto Palms Tk travel 5.2 kms → **Cabbage Tree Creek Flora Reserve.** A short walk amongst the southern most population of the Cabbage Tree Palm, *Livistona australis*. Commonly found in NSW and Queensland it is Victoria's only indigenous palm.

Continue travelling on Palms Tk 2.2 kms → turn left onto Marlo-Cabbage Tree Rd travel 5.7 kms → turn right onto Cabbage Tree-Conran Rd travel 2.2 kms → turn left onto Old Coast Rd (veer right after 6 kms) travel total 8.6 kms → East Yeerung Tk intersection.

**[OPTIONAL SIDE TRIP- 4WD Only:** → turn right onto East Yeerung Tk travel 2.8 kms → **Yeerung Gorge.** A 20 min return walk. Return to Old Coast Rd → turn right]

Continue travelling east on Old Coast Rd travel 10.1 kms

### DSE regional locations:

**Orbost** 171-173 Nicholson Street, Orbost 3888  
Phone: 03 5161 1222

**Bendoc** Nichol Street, Bendoc 3888  
Phone: 02 6459 0500

**Cann River** Princes Highway, Cann River 3890  
Phone: 03 5158 2100

### DSE Customer Service Centre 136 186

call from anywhere within Australia for the cost of a local call (excluding mobiles and public telephones which incur additional costs) [customer.service@dse.vic.gov.au](mailto:customer.service@dse.vic.gov.au)

### Victorian Bushfire Information Line 1800 240667

© State of Victoria, Department of Sustainability and Environment 2007, 2008. This publication is copyright. No part may be reproduced by any process except in accordance with the provisions of the Copyright Act 1968. ISBN 978-1-74208-808-2 (Print) ISBN 978-1-74208-809-9 (Online)

This publication may be of assistance to you but the State of Victoria and its employees do not guarantee that the publication is without flaw of any kind or is wholly appropriate for your particular purposes and therefore disclaims all liability for any error, loss or consequence which may arise from you relying on any information in this publication.

First Published in 2008 by the Victorian Government. Land and Fire, Orbost, East Gippsland Area, Department of Sustainability and Environment. Authorised by the Victorian Government, Melbourne. Printed by E-Gee Printers. Second Edition printed in November 2008. Parks Victoria & East Gippsland Shire Council.



View north from Bemm River bridge

→ turn right onto Bemm River Rd travel 7.7 kms → U bend → **Bemm River bridge.** Bemm River is a Victorian Heritage River along with its tributaries the Goolengook, Arte and Errinundra Rivers. Their margins support some of the best rainforest in the state, with a near continuous occurrence of cool and warm temperate rainforest from 1200 m elevation to close to sea level.

**[OPTIONAL SIDE TRIP:** continue on Bemm River Rd travel 3.5 kms → **Bemm River township.** Excellent fishing and access to coastal park. Return to U bend].

Cross the bridge on Old Coast Rd (view the rapids to the north) travel 29.3 kms → Princes Hwy.

**[OPTIONAL SIDE TRIP:** turn right onto the Princes Hwy travel 2.2 kms → **Cann River township.** The gateway to Croajingolong National Park and access to Point Hicks. Return to Old Coast Rd intersection 'Tip Rd' to continue]

Turn left onto the Princes Hwy travel 13.9 kms → turn right at **Lind National Park** travel 300 m → **Euchre Valley Nature Drive** travel 4.5 kms → **Growlers Picnic Area** → continuing north on the drive travel 2.2 kms → \*turn left onto Combienbar Rd travel 4.1 kms → turn right onto the Princes Hwy travel 8.8 kms

**[\*ALTERNATIVE ROUTE (Vehicles less than One Tonne):** cross Combienbar Rd into Club Terrace Loop Rd travel through the river corridor 10.2 kms → turn right onto Princes Hwy travel 3 kms]

→ turn left at picnic tables travel 350 m → **Bemm River Scenic Reserve & Rainforest Walk.** An easy 1 km walk introducing you to East Gippsland's Warm Temperate Rainforest.

**Tour END.** At the Princes Hwy turn left to continue travelling west (45 kms) → **Orbost.**



Cabbage Tree Palm, *Livistona australis*



Grass Tree, *Xanthorrhoea* spp.

**The 4WD track ratings for these tours are advisory only and have been estimated for travel in dry conditions. Even after very light rain, many tracks can become extremely slippery, and more difficult to negotiate safely. The stated ratings may not be accurate after rain or heavy dew, and greater care needs to be exercised.**

**Fieldwork has revealed that odometer readings can vary from +/- 200 metres per 10 kms depending upon the vehicle used. The tour description distance does not include optional side trips.**

Healthy Parks  
Healthy People

Parks  
VICTORIA

EAST GIPPSLAND  
Naturally Magic



A Victorian  
Government  
Project

