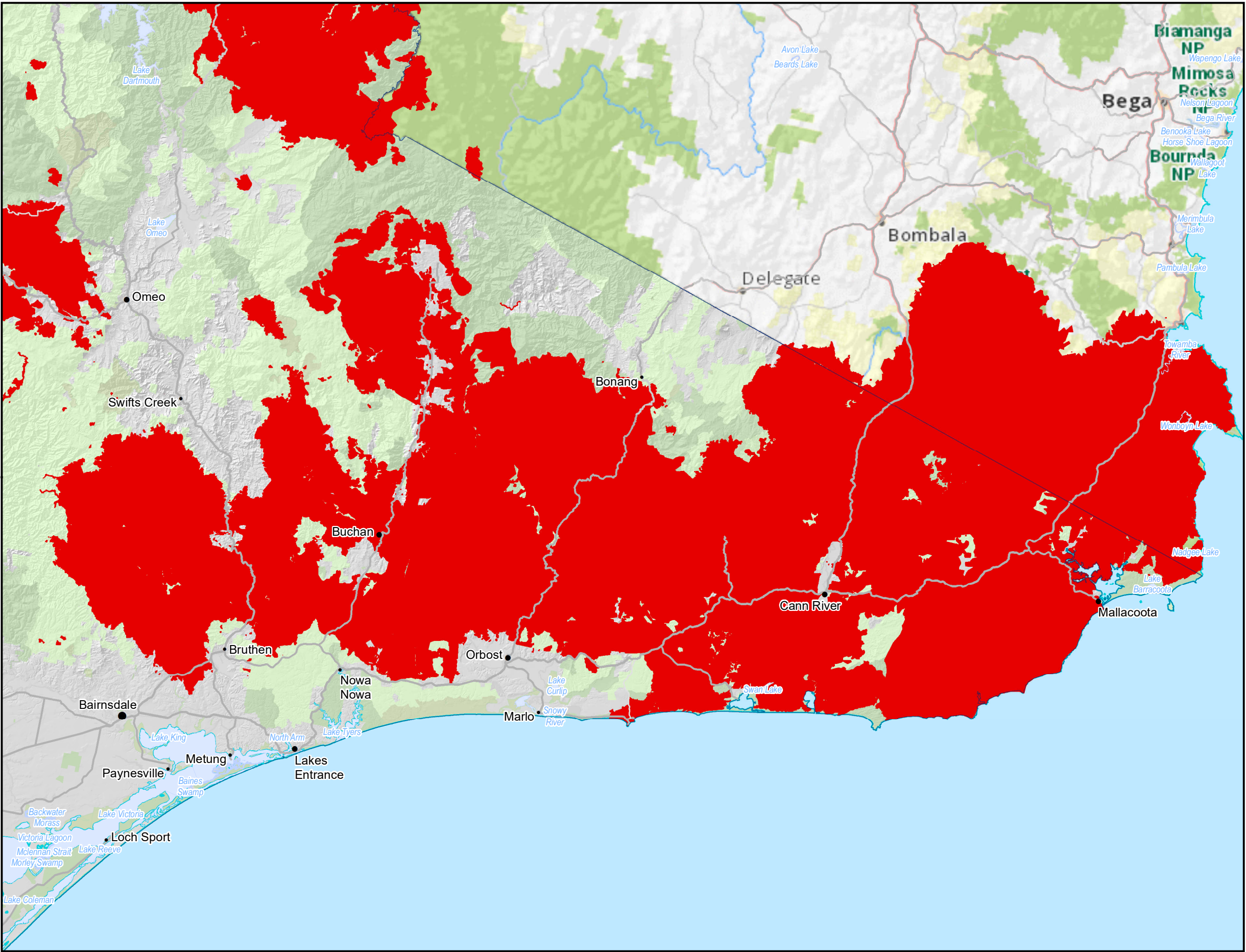
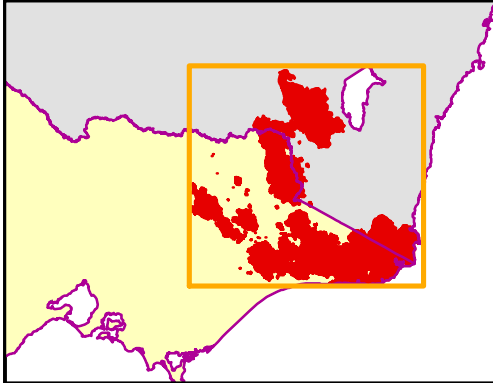


Gippsland Fires - Fire Extent 2019/2020



- Freeways
- Highways
- Arterial Sealed
- Arterial Unsealed
- Local Sealed
- Perennial Waterbody
- Intermittent Waterbody
- Wetland / Swamp
- 1920_BlackSummer_fires
- COMMONWEALTH LAND
- NATIONAL PARKS ACT AND NATURE CONSERVATION RESERVES
- OTHER CONSERVATION RESERVES
- OTHER PUBLIC LAND
- PLANTATION
- STATE FOREST

Total Fire area 1,502,674 ha
Total Fire increase 663,035 ha



0 4.5 9 18 27 36
Kilometres

Disclaimer:
This map is a snapshot generated from Victorian Government data. The State of Victoria does not guarantee that the publication is without flaw of any kind or is wholly appropriate for your particular purposes and therefore disclaims all liability for error, loss or damage which may arise from reliance upon it. All persons accessing this information should make appropriate enquiries to assess the currency of the data.

MXD name: G:\LFE_Group\FEM\Ops_Sup_Cap\Radio_Info_Sys\Mapping\Requests_Mapping\Royal_Commission_2020\mxds\Victorian_fires_fire_area_end1920v2.mxd

Date last saved/printed: Wednesday, 8 December 2021 1:29:20 PM
PC login: nw15 PC Number: WLF4L1N2