

Delatite Arm Reserve

The Delatite Arm Reserve is situated along the shores of Lake Eildon and is adjacent to bushland, pine plantation and revegetated forest areas.

The reserve is popular for camping, water sports, scenic views and fishing. A network of forest tracks provides opportunities for 4WD driving, trail bike riding, mountain bike riding and bush walking.

Getting There

The reserve is approximately 190 km north east of Melbourne, via Mansfield or Jamieson. Access to the Delatite Peninsula is via Walshs Rd, near the township of Goughs Bay. Motor vehicles, trucks, motorbikes, mountainbikes, horses and pedestrians share this road.

During summer, traffic can create considerable dust and restrict visibility so please drive according to local conditions. Harvesting of the pines can occur any time from November to July. Trucks carrying logs and harvesting equipment use UHF channel 25 to communicate with other traffic.

The Delatite Arm Regeneration Project

The DSE is currently undertaking a large regeneration project adjacent to the camping areas. As pine trees are harvested the area is revegetated with trees native to the area.

The first trees were planted in 2001 and planting occurs each year over the winter months. So far the project has planted well over one million trees on approximately 1500 hectares, with a further 500 hectares to be revegetated over the next few years.



Minimal Impact Camping

There are numerous camping sites located above the high water mark of Lake Eildon. Camping is only permitted within these designated camping areas, and is on a first-come, first-served basis. No bookings are required, but early arrival is advised during peak periods.

Camping is not allowed below the high water mark.

Please remember:

- Be careful of camping under trees. Trees can lose their limbs at any time, particularly during high winds.
- There is no rubbish collection service provided. All rubbish must be taken home.
- Toilets are provided at all campsites for your convenience – please use them.
- Dogs are allowed within the reserve but must be under control at all times and are expected to be leashed or restrained.
- Protect water quality – wash up at least 50 metres away from the lake or any streams and avoid using soap (use gritty sand and a scourer instead)
- Do not dig trenches around tents or caravans. This is unnecessary,

particularly if you choose a well-drained or raised site.

Use of firearms is prohibited within the Delatite Arm Reserve.

Dogs and firearms are not permitted within Lake Eildon National Park.

Campfires

Take care with fire

- Observe all fire regulations and Total Fire Ban Days.
- On a day of Total Fire Ban **NO** campfires or open flame barbeques, liquid fuel or gas appliances are allowed.
- Always ensure fires are completely extinguished before you leave.
- Please use existing fire places rather than create your own.
- Firewood is not provided. Campers may use fallen dead wood for campfires.
- Do not remove any timber from standing trees or damage other vegetation.

Activities

Trail bikes: must be registered and roadworthy. All riders must be fully licenced.

All vehicles: including trail bikes are restricted to formed roads and tracks open to public vehicles.

Boating: There is an 8km/hr limit on Lake Eildon from Picnic Point to Walsh's Cove.

Fishing: Anglers can try their luck for Redfin, Trout and Cod, from boat or shore with a current licence.

Be fire ready, stay safe

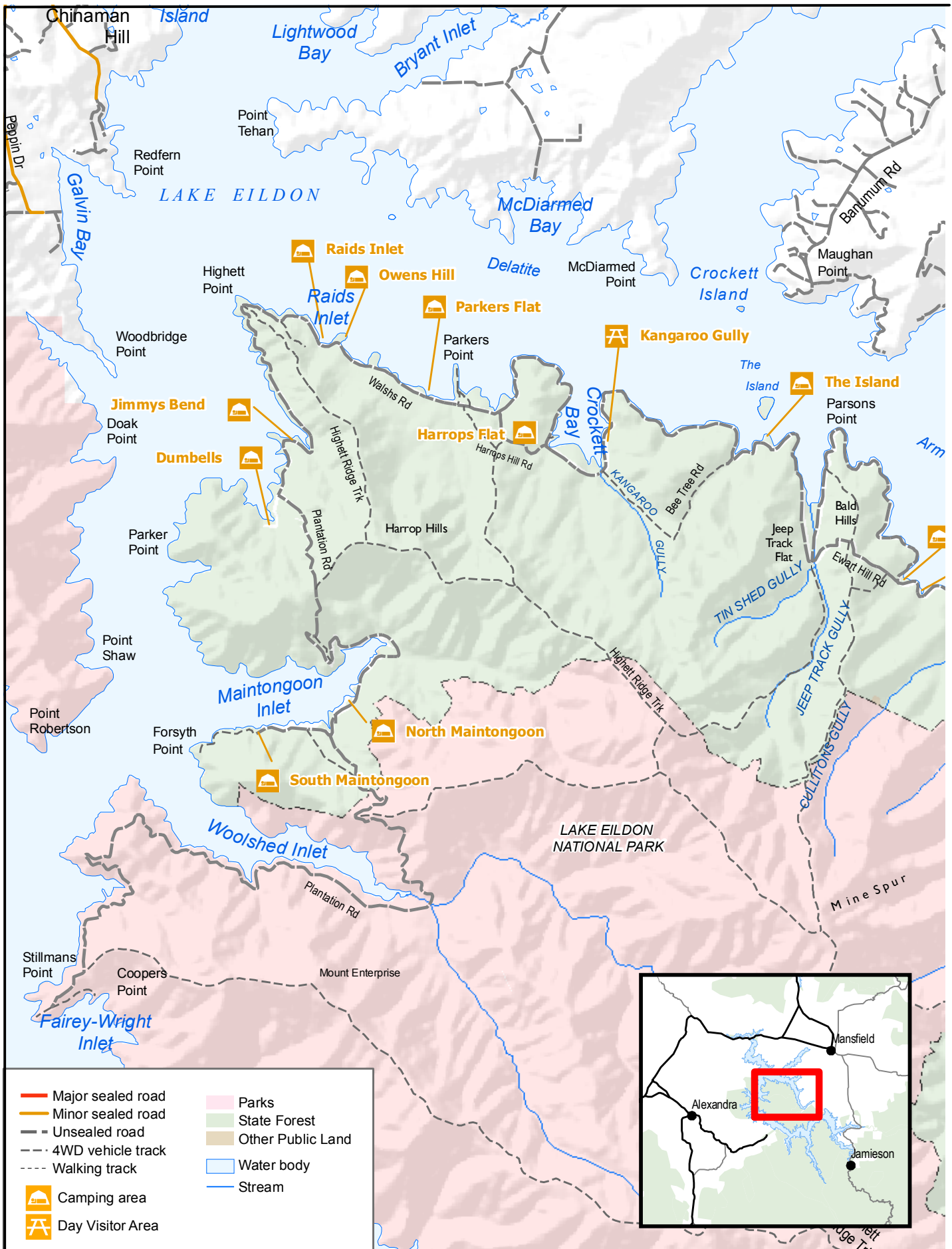
Be aware of the forecast Fire Danger Rating for this area when planning your trip. Plan to leave early on hot, dry and windy days, as these conditions may cause the closure of some forest areas for public safety.

For updated information on fires in Victoria or general fire safety advice, please call the Victorian Bushfire Information Line on 1800 240 667 or listen to a local ABC/ACE radio station or visit www.dse.vic.gov.au

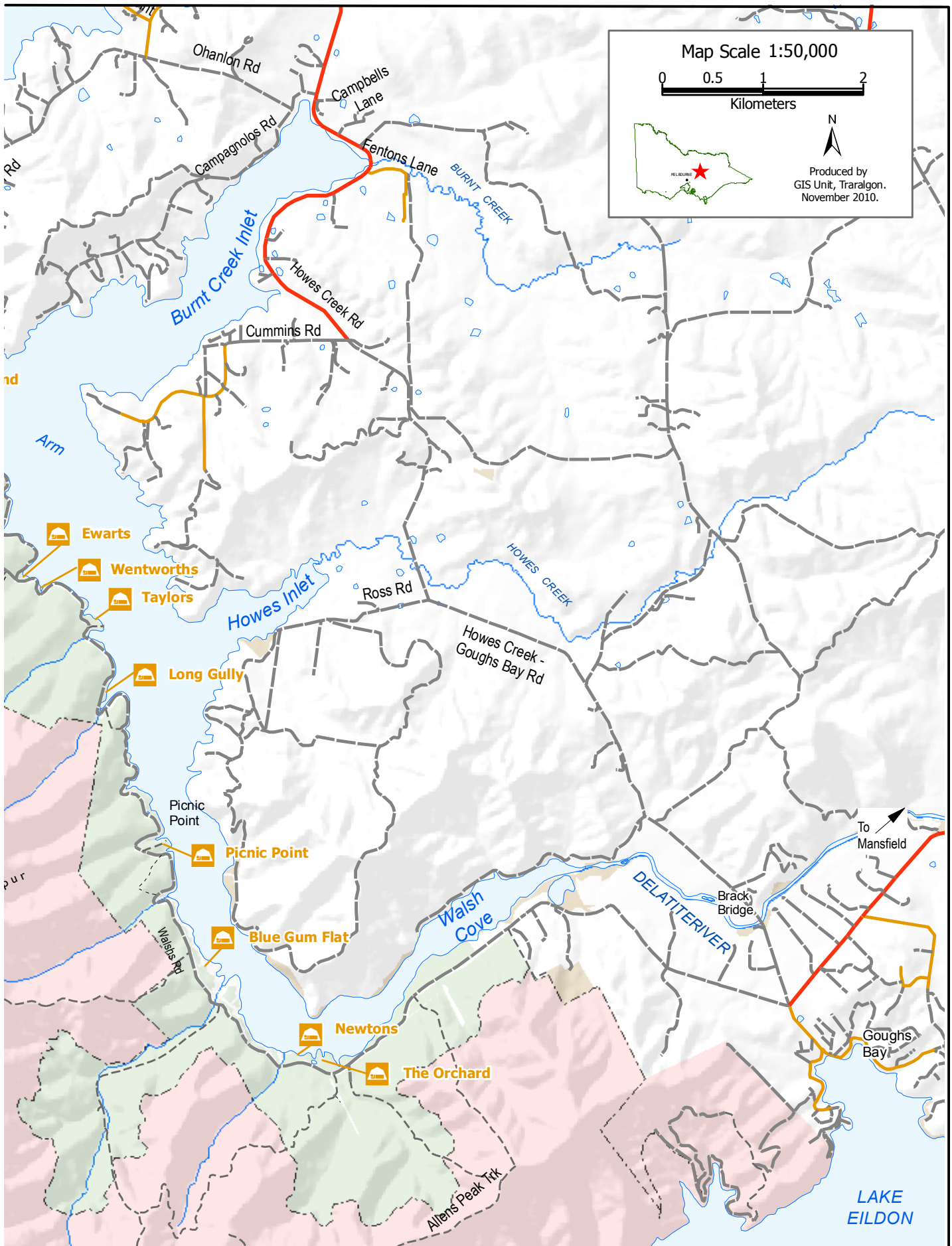
For more information

The Department of Sustainability and Environment (DSE) is responsible for managing Victoria's State Forest. For further information contact DSE's Customer Service Centre on 136 186 (TTY: 1800 122 969) or visit DSE's website at <http://www.dse.vic.gov.au/forests>

This publication may be of assistance to you but the State of Victoria and its officers do not guarantee that the publication is without flaw of any kind or is wholly appropriate for your particular purposes and therefore disclaims all liability for any error, loss or other consequence which may arise from you relying on any information in this publication.



This publication may be of assistance to you but the State of Victoria and its employees do not guarantee that the publication is without flaw of any kind or is wholly appropriate for your particular purposes and therefore disclaims all liability for any error, loss or other consequence which may arise from you relying on any information in this publication.



This publication may be of assistance to you but the State of Victoria and its employees do not guarantee that the publication is without flaw of any kind or is wholly appropriate for your particular purposes and therefore disclaims all liability for any error, loss or other consequence which may arise from you relying on any information in this publication.