

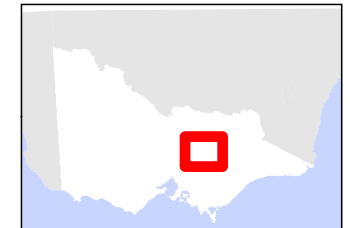
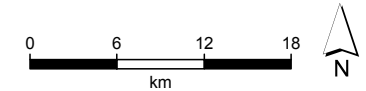
Goulburn District Firewood Collection Areas

Autumn 2018

Hume Region

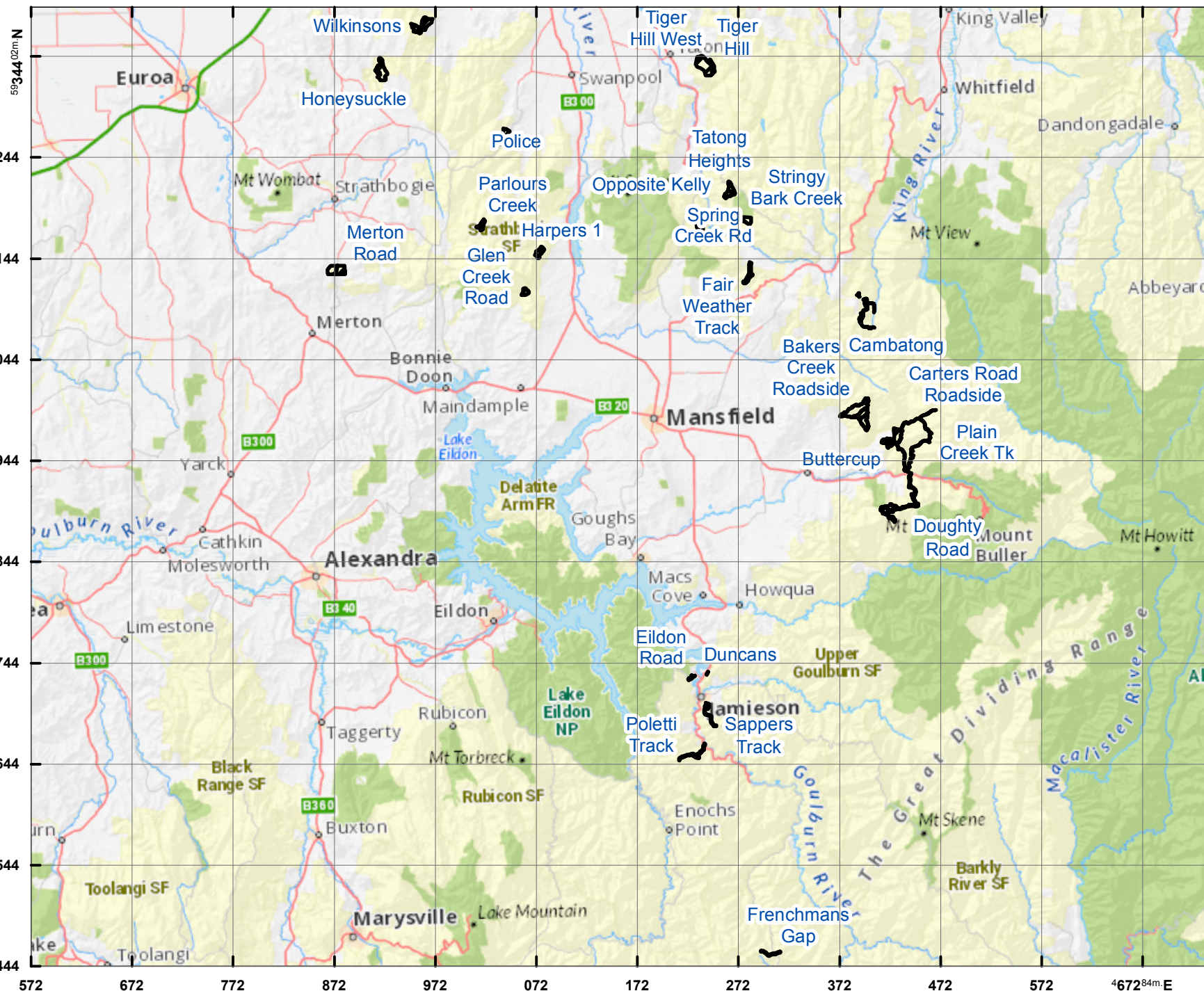
Legend

 Domestic Firewood Collection



Map produced by: Regional GIS Services, Wodonga.
15 February 2018; HFMR1718-25
Projection: GDA 94 MGA Zone 55
Spatial data is sourced from the Victorian
Spatial Data Library.
Copyright © The State of Victoria,
Department of Environment, Land, Water & Planning

There is no guarantee that firewood will be available for collection in the domestic firewood collection area after it has been opened. All persons entering and collecting in the domestic firewood collection area must have regard for their safety and the safety of others and must comply with all relevant laws when in State Forest / Parks.



Disclaimer: This map is a snapshot generated from Victorian Government data. This material may be of assistance to you but the State of Victoria does not guarantee that the publication is without flaw of any kind or is wholly appropriate for your particular purposes and therefore disclaims all liability for error, loss or damage which may arise from reliance upon it. All persons accessing this information should make appropriate enquiries to assess the currency of the data.

Accessibility: If you would like to receive this publication in an accessible format such as large print or black and white please telephone 136 186. Deaf, hearing impaired or speech impaired? Call us via the National Relay Service on 133 677 or visit www.relayservice.com.au