

Trail Bike Riding – Stanley State Forest

DSE – Beechworth

November 2009

FS0096

ISSN 1440-2262

Welcome to Stanley State Forest. Situated between Yackandandah and Beechworth it provides some great opportunities to pursue outdoor recreation activities. This brochure will provide you with information for you to enjoy trail bike riding in Stanley State Forest.

Stanley Trail Bike Visitor Area

Stanley Trail Bike Visitor Area is central to a large network of forest roads and tracks ideal for trail bike riding and provides riders with facilities to make either end of a ride more enjoyable.

Location and Access

Stanley Trail Bike Visitor Area is located less than 5 kilometres from the Yackandandah township. From Yackandandah drive along the Bells Flat Road for approximately 3km onto Service Basin Road then follow this Road onto No1 Link Road. 1.7km further on will bring you to the Stanley Trail Bike Visitor Area.

What Facilities Are Provided?

Facilities include:

- Large parking area accommodating both vehicles and trailers
- A unisex toilet
- Information board and maps
- Picnic tables and seats

Riding & Safety Information

Seasonal Road Closures

Some forest roads in Stanley State forest and adjacent parks and reserves are subject to seasonal road closure. These roads are closed from 11 June 2009 until Thursday, 29 October. Road closures may extend beyond these dates depending on weather conditions. For more information about road closures visit www.parkweb.vic.gov.au.

Plantation Access and Roads

Hancock Victorian Plantations (HVP) privately manages the roads and plantations within Stanley State forest. You must contact HVP to undergo a safety induction before using roads within a

plantation. Contact or visit one of the following HVP offices; Myrtleford: 33 Smith St ☎ (03) 5731 2000 or Benalla: 62 Gillies St ☎ (03) 5761 2400.

Ride For Tomorrow

Trail bike riding is great fun, but just so you don't spoil the fun for others who come to use the forests, please note the following.

Reduce Your Noise



DSE and VicRoads have developed some new signs to indicate noise sensitive areas where riders should ride more slowly and quietly. Obeying these signs is voluntary (i.e. not a legal requirement), but if riders ride slowly and quietly in these areas, it will help keep the peace and be greatly appreciated by other forest users and nearby residents

Refer to map overleaf for key noise sensitive areas

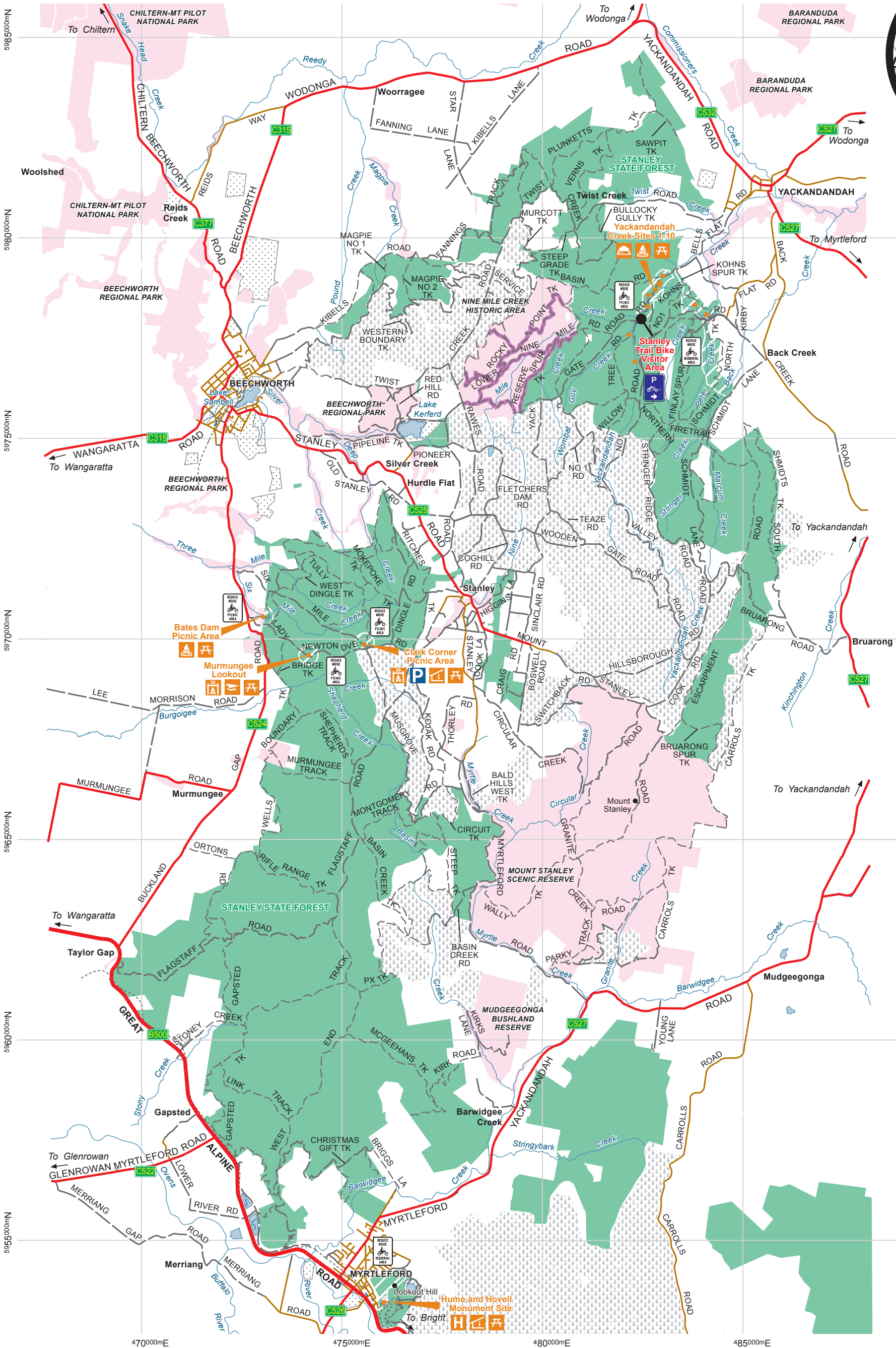
Respect the Environment – Respect Others

- Riders must be licensed - motorcycles must be registered
- Ride Legal - Stay on Forest Roads
- Take your litter home

For More Information

The Department of Sustainability and Environment (DSE) is responsible for managing Victoria's State Forest. For further information contact DSE's Customer Service Centre on 136 186 (TTY: 1800 122 969) or visit <http://www.dse.vic.gov.au/trailbikes>

This publication may be of assistance to you but the State of Victoria and its officers do not guarantee that the publication is without flaw of any kind or is wholly appropriate for your particular purposes and therefore disclaims all liability for any error, loss or other consequence which may arise from you relying on any information in this publication.



ROAD CLOSURES
To help protect road surfaces, water quality and the environment and to ensure driver safety, roads in parks and forests throughout Victoria are seasonally closed during the year, especially in winter or temporarily closed for operational (or other) reasons.

Most seasonal road closures take effect from the Thursday after the Queens Birthday long weekend and remain in force until the Melbourne Cup Day long weekend. Please note that not all road closures can be shown on this map as additional seasonally or temporarily closed roads may be added from year to year.

Please obey road closed signs and help us protect the environment.

Hancock Victorian Plantations (HVP) privately manage plantation roads within Stanley State Forest. HVP is allowing trail bike riders to use specific roads in the Stanley Plantation to access other DSE, Parks Victoria and shire roads, however, you must contact HVP to undergo a safety induction before using these roads. Riding on any other HVP plantation road not identified on this map is not permitted. Please contact or visit a HVP office for more information and to complete the plantation safety induction: Myrtleford - 33 Smith St (03) 57312000 or Benalla - 62 Gillies St (03) 57612400

Stanley State Forest

- Highway
- Major sealed road
- Minor sealed road
- Unsealed road
- Vehicle track (4WD)
- Road subject to seasonal closure
- Walking track
- State Forest
- Parks and Reserves
- Other Public Land
- Softwood Plantations
- Water body
- Trail Bike Visitor Area
- Reduce Noise Area

Recreational Facilities

- Barbecue-Wood
- Camping
- Carpark
- Fireplace
- Historic site
- Information shelter
- Lookout
- Picnic table

0 1 2
KILOMETRES
Cartography by Spatial Vision 2009
M9215



This publication may be of assistance to you but the State of Victoria and its officers do not guarantee that the publication is without flaw of any kind or is wholly appropriate for your particular purposes and therefore disclaims all liability for any error, loss or other consequence which may arise from you relying on any information in this publication.