

Joint Fuel Management Program 2021/22 – 2023/2024

Loddon Mallee FFMVic Region
North West CFA Region



Photo credits

Ash Christian

© The State of Victoria Department of Environment, Land, Water and Planning 2021



This work is licensed under a Creative Commons Attribution 4.0 International licence. You are free to re-use the work under that licence, on the condition that you credit the State of Victoria as author. The licence does not apply to any images, photographs or branding, including the Victorian Coat of Arms, the Victorian Government logo and the Department of Environment, Land, Water and Planning (DELWP) logo. To view a copy of this licence, visit <http://creativecommons.org/licenses/by/4.0/>

ISBN 978-1-76105-757-1 (Print)

ISBN 978-1-76105-758-8 (pdf/online/MS word)

Disclaimer

This publication may be of assistance to you, but the State of Victoria and its employees do not guarantee that the publication is without flaw of any kind or is wholly appropriate for your particular purposes and therefore disclaims all liability for any error, loss or other consequence which may arise from you relying on any information in this publication.

Accessibility

If you would like to receive this publication in an alternative format, please telephone the DELWP Customer Service Centre on 136186, email customer.service@delwp.vic.gov.au or via the National Relay Service on 133 677 www.relayservice.com.au. This document is also available on the internet at www.delwp.vic.gov.au.

Contents

Foreword	4
Joint Fuel Management Program.....	5
Our Objectives.....	7
Residual Risk	7
2021/22 – 2023/24 Joint Fuel Management Program	8
Planned burns.....	9
Non-burning fuel treatments	9
Strategic Fuel Breaks	11
Cultural Burning	13
Endorsement	14
Approval	14
How to become involved in the development of the Joint Fuel Management Program	14
Appendix (1): FFMVic Schedules of Activities.....	15
SCHEDULE 1: FFMVic LEAD MALLEE DISTRICT – PLANNED BURNING	15
SCHEDULE 1: FFMVic LEAD MURRAY GOLDFIELDS DISTRICT – PLANNED BURNING.....	20
Appendix (2): CFA Schedules of Activities	34
Glossary	40

Foreword

Working together, Forest Fire Management Victoria (FFMVic*) and the Country Fire Authority (CFA) have developed this Joint Fuel Management Program (JFMP) which covers the Loddon Mallee FFMVic Region and the Loddon Mallee component of CFA's North West Region. It demonstrates our commitment to working more closely together to deliver the best bushfire risk reduction outcomes for Victorians.

The Joint Fuel Management Program is planned to achieve an integrated and risk-focused fuel management program across public and private land. It is designed to implement long-term bushfire management strategies that outline how the risk of bushfires is managed for the protection of life and property on public and private land, while maintaining and improving natural ecosystems.

In response to the devastating 2019/20 Black Summer bushfires and subsequent inquiries, the Victorian Government has committed to new programs which complement our current fuel management program and aim to reduce bushfire risk across all land tenure.

Strengthening and expanding Victoria's network of Strategic Fuel Breaks is one of the key actions designed to reduce the risk and impacts of more frequent, intense and damaging bushfires under a changing climate.


Investment will also be made on fuel management, targeting long grass and other flammable undergrowth, particularly along our major road and rail corridors. We will work together with Local Government Authorities and water, road and rail authorities to ensure that our works are complementary.

The following program has also been shaped by a variety of research and local information, such as specialist input from FFMVic, CFA staff and volunteers and key industries, as well as knowledge from local communities, including Traditional Owners and key stakeholders. We would like to recognise the work that has been put into developing this Joint Fuel Management Program, by FFMVic, CFA and the local communities.

We encourage your continued input to ensure our plans protect those assets and values which are important to all Victorians.



Paul Bates
Acting Deputy Chief Fire Officer
DELWP Loddon Mallee Region



Gavin Thompson
Deputy Chief Officer
CFA North West Region

* Forest Fire Management Victoria (FFMVic) – is the organisation that delivers services to achieve DELWP's legislated responsibilities. It consists of specialist staff from DELWP, Parks Victoria, Melbourne Water and VicForests.

Joint Fuel Management Program

This Joint Fuel Management Program (JFMP) lists fuel management activities in the Loddon Mallee DELWP Region and the North West CFA Region only.

It covers Mallee and Murray Goldfields DELWP Districts and CFA Districts 2, 18 and 20 (Map 1).

The schedules contained within this document set out where and when activities are planned to occur for the period from 2020/21 to 2022/23. The planned activities are listed by Lead Agency.

To view all fuel management works in your area, the statewide Joint Fuel Management Program map can be viewed at <http://www.ffm.vic.gov.au/jfmp>.

This document contains details about the following planned activities:

Planned Burns - fuel reduction, ecological and other planned burns by indicative year for the three-year period.

Non-Burning Fuel Treatments - the program of works that uses methods other than burning to achieve fuel management objectives.

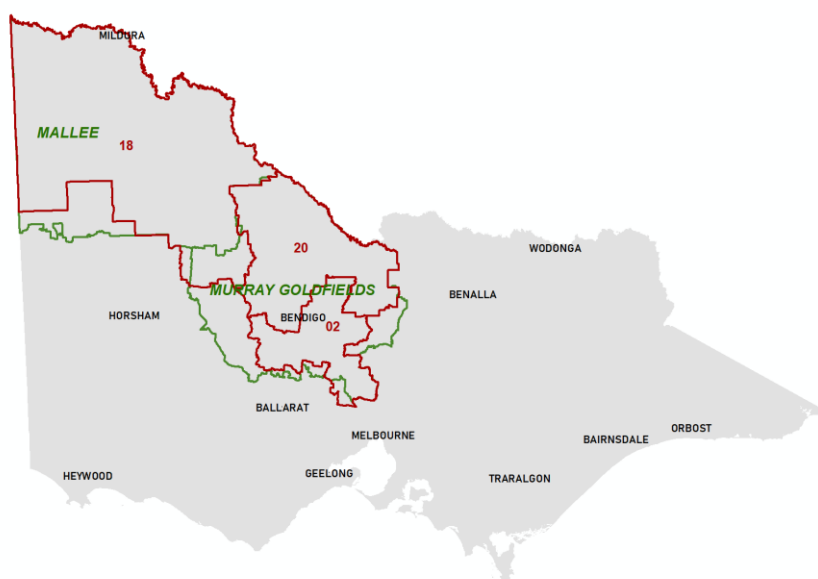
Strategic Fuel Breaks - a strip of land where vegetation has been permanently modified to reduce the rate of spread and intensity of fire for the direct protection of assets and/or assist fire control. They can also assist in the safe delivery of planned burns.

Fire season preparation works – works done prior to the fire season, to ensure infrastructure used in fire detection and suppression are ready for use.

Cultural burning – planned burns led by Traditional Owners on their Country using fire for a number of purposes.

It is important to note that the ability to carry out planned activities is dependent on seasonal and local weather conditions. To allow for this, planned burns from the second and third years of the program may be brought forward to the current year to replace a burn planned for the first year.

Map 1: DELWP and CFA Districts included on this Joint Fuel Management Program



The JFMP is prepared and will be implemented in accordance with Safer Together: A new approach to reducing the risk of bushfire in Victoria, the Code of Practice for Bushfire Management on Public Land 2012

the Regional Bushfire Management Strategy and relevant CFA and FFMVic Instructions, Manuals and Guidelines.

Burns on public land associated with logging regeneration as well as small heap burns are not included in the JFMP as they are approved as part of separate planning processes.

Our Objectives

This JFMP has been developed to implement strategies set out in the Loddon Mallee Bushfire Management Strategy (BMS), which has been developed by FFMVic and CFA in consultation with agencies, stakeholders and the community.

The BMS establishes a cross-tenure fuel management strategy to address the bushfire risk across public and private land. It:

- sets clear objectives and associated performance measures for fire management at a regional scale;
- identifies where important values and assets are located across the landscape; and
- includes regional trends in population, industry, and environmental change.

The BMS defines fire management zones on public land that focus appropriate fire management activities to reduce bushfire risk for identified values and promote ecological resilience over the life of the strategy (30-40 years).

Importantly, it identifies Bushfire Risk Engagement Areas (BREA) across public and private land. These areas are intended to support agencies to engage with private landholders about fuel management where it will provide effective bushfire risk reduction.

You can explore what is in our Bushfire Management Strategy [here](#).

Residual Risk

The Loddon Mallee Bushfire Management Strategy contributes to achieving the Victorian Government Statewide risk reduction objective, which commits to maintaining bushfire risk at or below a residual risk of 70% in the long-term.

Residual risk is the risk, on average, that bushfires will impact on life and property across the landscape. It is expressed as the percentage of the risk that remains after bushfire history and fuel management (mainly planned burning) activities are considered. It is reported on an annual basis.

Each District works towards managing the local bushfire risk through identifying planned burns and other fuel management works, which collectively will meet the Statewide risk reduction target.

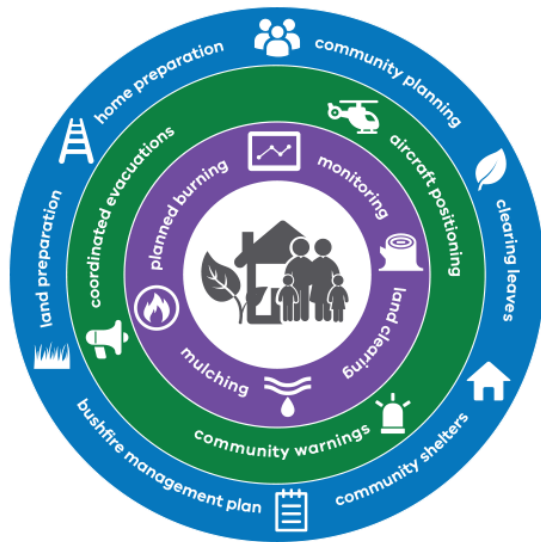
This JFMP aims to meet or exceed the regional residual risk targets and to enable the delivery of bushfire management strategies other than residual risk. It provides flexibility to account for different seasonal conditions.

Table 1: Changes to Residual Risk through implementation of the JFMP

Residual risk categories	Mallee District	Murray Goldfields District	Region
Residual Risk Target	90	75	75
Current Residual Risk % (30 June 2021)	82	73	73
Projected Residual Risk % by 2022 with implementation of JFMP	82	73.3	73.3
Projected Residual Risk % by 2024 with implementation of JFMP	82	72.3	72.3
Projected Residual Risk % by 2024 without implementation of JFMP	86	81	81

2021/22 – 2023/24 Joint Fuel Management Program

Planned burning and other fuel management works on this JFMP have been designed to:



- Reduce or maintain residual risk,
- Reduce the size and intensity of bushfire in the landscape to reduce the risk to ecosystems, communities and industries,
- Introduce fire into recently burnt landscapes to prevent continuous fuel build up,
- Use landscape burning techniques along with other strategies to achieve the above, and
- Enhance the use of non-burning fuel treatments to reduce bushfire risk.

Planned burns may be managed differently across different areas to achieve bushfire risk reduction. In areas close to towns or other assets, **asset protection burns** are more frequent and higher coverage to protect people and the things they value. These burns make a significant

contribution to our residual risk reduction.

Landscape burning can be used to reduce the spread of bushfires, aiming to reduce the size and intensity of major bushfires in the landscape. Generally, these landscape burns are of larger scale and low coverage. They may be carried out over multiple years and can be unbounded, relying on fuel and moisture differentials for containment.

While **Strategic fuel breaks** are approved via a different process, they are included in the JFMP to demonstrate our integrated approach to managing bushfire risk.

Planned burns

The following is a summary of the area and number of planned burns in all Districts over the next three years to achieve BMS objectives. As previously mentioned, these planned burns may have fuel reduction or ecological objectives. Details for individual burns are included in Appendices 1 and 2. Any planned burns which have been added to the JFMP for the first time are indicated as being 'New' in the detailed description.

Table 2: Planned burning for 2021/22 – 2023/2024

Agency / District	2021/2022		2022/2023		2023/2024	
	Area (ha)	No. of Burns	Area (ha)	No. of Burns	Area (ha)	No. of Burns
CFA						
District 02	43.1	10	21.2	11	1.7	3
ECOLOGICAL	3.2	2	0.3	1	0.6	1
FUEL REDUCTION	39.9	8	19.2	8	4.66	2
TRADITIONAL OWNER			2.7	2		
District 18	34.6	6	337.3	3	16.4	2
ECOLOGICAL						
FUEL REDUCTION	34.6	6	22.3	2	16.4	2
TRADITIONAL OWNER			315	1		
District 20	92.4	8	1441.7	10	16.5	2
ECOLOGICAL	2.7	2			16.5	2
FUEL REDUCTION	89.7	6	501.7	4		
TRADITIONAL OWNER			940	6		
DELWP						
MALLEE	10335.3	13	14068.5	29	14440.7	18
ECOLOGICAL	371.9	2			131.1	1
FUEL REDUCTION	9962.4	10	14068.5	29	14309.6	17
TRADITIONAL OWNER	1	1				
MURRAY GOLDFIELDS	8274.2	108	8332.9	50	6401.2	38
ECOLOGICAL	371.9	5	254.2	2	44.2	1
FUEL REDUCTION	3994.7	35	4130	21	3133.9	22
TRADITIONAL OWNER	3907.6	68	3954.7	27	3223.1	15

Non-burning fuel treatments

Non-burning fuel treatment can include mulching, slashing or other operations which do not involve planned burning to reduce fuel loads. The work is an important contributor to reducing bushfire risk to communities as non-burning treatments may be more appropriate or practical in certain areas. For example, fuel on small areas located within or close to townships may be slashed or mulched, where burning is impractical. These methods may also be more suitable in certain vegetation types.

Some of these fuel treatments are annual, with others prioritised based on the seasonal conditions and scheduling of specific planned burns. The actual treatment area will be dependent on the condition of the fuels at the time of assessment.

Table 3: Non-burning fuel treatments for 2021/22 – 2023/2024

Agency / District	2021/2022		2022/2023		2023/2024	
	Area (ha)	No. of Blocks	Area (ha)	No. of Blocks	Area (ha)	No. of Blocks
CFA						
District 02	0	0	0	0	0	0
District 18	0	0	0	0	0	0
District 20	0	0	0	0	0	0
DELWP						
MALLEE	2716.1	299	0	0	0	0
MULCHING	623.3	74				
PLOUGHING	233.7	8				
PRUNING	493.8	55				
ROLLING	182.9	6				
SLASHING / MOWING	911.5	139				
SPRAYING	270.9	17				
MURRAY GOLDFIELDS	3925.5	950	0	0	0	0
MULCHING	1941.4	323				
PLOUGHING	73.7	15				
SLASHING / MOWING	1910.2	611				
SPRAYING	0.2	1				

Strategic Fuel Breaks

Strengthening and expanding Victoria's network of Strategic Fuel Breaks is one of the key actions that form DELWP's Advanced Forest and Fire Management strategy, designed to reduce the risk and impacts of more frequent, intense and damaging bushfires under a changing climate.

Fuel breaks are critical to protecting communities, catchments and the environment from devastation by bushfire. They do this by making it easier, faster and safer for firefighters to suppress fires. As a last resort, they can also assist in reducing the intensity of direct fire on houses and other buildings.

The Strategic Fuel Break program is utilising two types of protection breaks in their work:

Landscape protection breaks (LPB): Located in the forest to divide the landscape into units/areas suitable to help to reduce the fire to the smallest size possible. These breaks provide a platform for fighting fires in the forest and may also reduce fire impacts on nearby communities.

Asset protection breaks (APB): Designed to provide direct protections of communities and assets from the direct impacts of fire. These breaks are generally located adjacent to townships and assets.

Strategic fuel breaks are approved by a separate process and are displayed on the JFMP for information only.

The following strategic fuel breaks are proposed for construction (new) or renewal (upgrading of an existing break to meet current standards) during 2021/22 (Table 4). These are high priority Strategic Fuel Breaks that are planned to be constructed this year.

Table 4: Proposed strategic fuel breaks for 2021/22

FMS Number	SFB Name	SFB Type	Work Status	Distance (km)	Maximum width (m)
LM-MAL-RAI-0099	Wyperfeld NP - Southern Boundary - SFB	LPB	NEW	23.6	20
LM-MGF-AVO-0051	Pyrenees Range SF - Main Break - SFB	LPB	NEW	13.9	40
LM-MGF-BGO-0764	Bendigo RP - Forest Heights Drive - SFB	APB	NEW	1	20
LM-MGF-BGO-0769	Kimbolton - Twin Rivers Road - SFB	APB	NEW	1.88	40
LM-MGF-BGO-0914	Kimbolton SF - Coliban Pool - SFB	APB	NEW	7.5	40
LM-MGF-BGO-1220	Kimbolton - Twin Rivers Road West - SFB	APB	NEW	2	40
LM-MGF-CAS-0412	Walmer SF - Daltons Road - SFB	LPB	NEW	1.36	40
LM-MGF-CAS-0413	Walmer SF - Youngmans Track - SFB	LPB	NEW	3.38	40
LM-MGF-CAS-0416	Castlemaine Diggings NHP - Vaughan Chewton Road - SFB	APB	NEW	5.51	40
LM-MGF-CAS-0417	Castlemaine Diggings NHP - DOJ Interface - SFB	APB	NEW	7.08	40
LM-MGF-CAS-0418	Chewton - Forest Creek - SFB	APB	NEW	5.22	40
LM-MGF-CAS-0419	Castlemaine - Matheson Road - SFB	APB	NEW	1.18	20
LM-MGF-CAS-0557	Walmer SF – Powerlines - SFB	LPB	NEW	1.67	40
LM-MGF-CAS-0558	Chewton - Wattle gully - SFB	APB	NEW	2.29	20
LM-MGF-CAS-0559	Castlemaine – Kalimna Park Complex - SFB	APB	NEW	3.06	20
LM-MGF-ING-0273	Inglewood SF - West Break - SFB	APB	NEW	3.3	20
LM-MGF-ING-0274	Inglewood SF - Old Reservoir Track - SFB	LPB	NEW	2.4	20

LM-MGF-ING-0332	Inglewood SF - Caravan Park - SFB	APB	NEW	0.34	20
LM-MGF-MAC-0083	Macedon RP - Cameron Drive - SFB	LPB	NEW	3.53	40

Currently, the Strategic Fuel Break program is only funded for 2021/22. However, initial planning has commenced to identify the overall Strategic Fuel Break network should further funding be available in future years. Additional high priority strategic fuel breaks have been identified as potential candidate breaks for construction in future years if funding allows, or as contingency fuel breaks should a proposed 2021/22 strategic fuel break not be able to be constructed (Table 5).

Table 5: Potential candidate strategic fuel breaks

FMS Number	SFB Name	SFB Type	Work Status	Distance (km)	Maximum width (m)
LM-MAL-MIL-0096	Hattah - Kulkyne NP - Calder Highway - SFB	LPB	NEW	29.03	20
LM-MGF-CAS-0407	Fryers Range SF - Fryers Ranges Road South - SFB	LPB	NEW	6.80	40
LM-MGF-CAS-0406	Fryers Range SF - Fryers Ridge Track North - SFB	LPB	NEW	5.87	40
LM-MGF-CAS-0408	Fryers Ridge NCR - Taradale Interface - SFB	LPB	NEW	5.54	20
LM-MGF-CAS-0414	Muckleford SF - Bells Lane Track - SFB	LPB	NEW	8.19	20

Cultural Burning

Cultural fire is fire deliberately put into the landscape authorised and lead by the Traditional Owners of that Country for a variety of purposes, including ceremony, protection of cultural and natural assets, fuel reduction, regeneration and management of food, fibre and medicines, flora regeneration, fauna habitat protection and healing Country's spirit.

We are guided by the Victorian Traditional Owner Cultural Fire Strategy which provides policy direction and a framework for fire and land management agencies to better enable Traditional Owners to undertake cultural burning for these cultural objectives.

There are six principles underpinning this strategy:

- cultural burning is right fire, right time, right way and for the right (cultural reasons), according to lore;
- burning is a cultural responsibility;
- cultural fire is living knowledge;
- monitoring, evaluation and research support cultural fire objectives and enable adaptive learning;
- Country is managed holistically; and
- cultural fire is healing.

The Strategy was authored by Victorian Traditional Owners with the support of a partnership between the Federation of Victorian Traditional Owner Corporations, DELWP, Parks Victoria and the CFA.

FFMVic and CFA recognises that cultural burning can assist landholders and communities in the use of fire to care for Country. The sharing of knowledge by our local Traditional Owners as well as from indigenous peoples from other parts of Australia will assist in improving our adaptive fire management practices in Victoria. This builds on supporting community through learning about how we live with fire.

Working together to foster knowledge sharing is an important way to enable participation of Aboriginal communities.

The following cultural burns are nominated and will be led by Traditional Owners with support from Forest Fire Management Victoria and CFA (Table 5).

Table 5: Number of burns nominated by each Traditional Owner

Traditional Owners	2021/22	2022/23	2023/24
Barapa Barapa	15	5	7
Dja Dja Wurrung	28	26	8
Tati Tati	1		
Wurundjeri	1		
Yorta Yorta	24	4	

Endorsement

The 2021/22 – 2023/2024 Joint Fuel Management Program has been endorsed by:

Acting Deputy Chief Fire Officer, Paul Bates DELWP Region:	Loddon Mallee
--	---------------

Deputy Chief Officer, Gavin Thompson CFA Region:	North West
--	------------

Approval

The 2021/22 – 2023/2024 Joint Fuel Management Program has been approved by:

DELWP Chief Fire Officer:	Chris Hardman
---------------------------	---------------

CFA Chief Officer:	Jason Heffeman
--------------------	----------------

Noting for on-ground ignition and delivery of cross tenure and private property burns, FFMVic and CFA agency responsibilities remain unchanged.

How to become involved in the development of the Joint Fuel Management Program

FFMVic and CFA welcome comment on fire management all year round, on all parts of the planning process – both strategic and operational. Please be aware that due to the planning cycle your comments relating to certain aspects of the program may not be included until the following year's Joint Fuel Management Program.

Comments and suggestions relating to the JFMP can be sent to:

Ben Matthews
Regional Fuel Management Coordinator
Department of Environment, Land, Water &
Planning
loddonmallee.plannedburning@delwp.vic.gov.au

David Allen
Manager Community Safety
Country Fire Authority
david.allen@cfa.vic.gov.au

You can find out more about our fuel management programs - FFMVic and CFA.

Planned Burns Victoria

Planned Burns Victoria (PBV) is a new, easy-to-use, opt-in system that you can customise to suit your notification needs. PBV currently provides an overview of all planned burns on this JFMP. The system also notifies people when a planned burn in Victoria is close to being ignited.

You can type in a postcode or location and access to information about planned burns on public and/or private land that are close to being ignited. You can access the system at:

<https://plannedburns.ffm.vic.gov.au>

Appendix (1): FFMVic Schedules of Activities

These schedules contain the details of FFMVic-led planned burning activities. Please note that the planned burn year and season identified for each planned burn is indicative only and may be changed due to weather conditions and operational requirements.

The following abbreviations maybe used in the following Schedules: '*' asterisk on burn name denotes a cross tenure burn; PV - Parks Victoria; COM - Committee of Management; DELWP- Department of Environment Land Water and Planning; PP – Private Property; FRB – Fuel Reduction Burn; ECO - Ecological burn; REG – Regeneration Burn; TO – Traditional Owner; FMZ – Fire Management Zone; APZ - Asset Protection Zone; BMZ – Bushfire Moderation Zone; LMZ - Landscape Management Zone; PBEZ – Planned Burn Exclusion Zone; NZ -Not Zoned; FPA – Fire Protected Area.

SCHEDULE 1: FFMVic LEAD MALLEE DISTRICT – PLANNED BURNING

FFMVic Lead Mallee District Planned Burns 2021/22

Local Government Area	Burn Number	Burn Name	General Location	Burn Type	Land Management Objective	FMZ	Planned Burn Size (ha)	New Burn
HINDMARSH SHIRE	LM-MAL-MIL-0069	Big Desert - Broadies Track	20KM WSW OF RAINBOW	FRB	To develop fuel reduced areas of sufficient width and continuity to reduce the speed and intensity of bushfires.	BMZ	414.65	N
HINDMARSH SHIRE	LM-MAL-MIL-0062	Big Desert - Majorlock Soak Track	15km SW of Cowangie	FRB	To develop fuel reduced areas of sufficient width and continuity to reduce the speed and intensity of bushfires.	BMZ	3283.9	N
HINDMARSH SHIRE	LM-MAL-MIL-0060	Big Desert - Netting Fence East	23KM WSW OF RAINBOW	FRB	To develop fuel reduced areas of sufficient width and continuity to reduce the speed and intensity of bushfires.	BMZ	610.1	N
HINDMARSH SHIRE	LM-MAL-RAI-0042	Rainbow - Rainbow Common	1km W of Rainbow	FRB	To provide bushfire protection by reducing overall fuel hazard and bushfire hazard in the landscape.	LMZ	98.92	N
MILDURA RURAL CITY	LM-MAL-MIL-0054	Patchewollock - Ouyen Walpeup Road	20KMS SE OF WALPEUP	FRB	To develop fuel reduced areas of sufficient width and continuity to reduce the speed and intensity of bushfires.	BMZ	291.39	N
MILDURA RURAL CITY	LM-MAL-RAI-0043	Wyperfeld - Nine Mile Square East	23KM SW OF PATCHEWOLLOCK	ECO	To develop fuel reduced areas of sufficient width and continuity to reduce the speed and intensity of bushfires.	BMZ	356.14	N
MILDURA RURAL CITY	LM-MAL-UND-0042	Wyperfeld - Underbool Track Corridor	13KM SOUTH OF UNDERBOOL	FRB	To develop fuel reduced areas of sufficient width and continuity to reduce the speed and intensity of bushfires.	BMZ	3744.9	N
SWAN HILL RURAL CITY	LM-MAL-SWA-0010	Chinkapook - Rail Yards	.05km NE of Chinkapook	FRB	To develop fuel reduced areas of sufficient width and continuity to reduce the speed and intensity of bushfires.	BMZ	0.98	N

SWAN HILL RURAL CITY	LM-MAL-SWA-0003	NYAH - DEVILS BEND	1KM NORTH OF NYAH	ECO	To modify the vegetation Abundance across the planned area to assist the Control of Horehound.	LMZ	15.8	N
SWAN HILL RURAL CITY	LM-MAL-ROB-0056	Robinvale - Tati Tati - Margooya Lagoon Block 1	8km SE of Robinvale	TO	To modify the vegetation Abundance across the planned area to assist the Promotion of Riverine Woodland.	LMZ	0.98	Y
WEST WIMMERA SHIRE	LM-MAL-MIL-0067	Big Desert - Telopea North	33KM NNW OF YANAC	FRB	To develop fuel reduced areas of sufficient width and continuity to reduce the speed and intensity of bushfires.	BMZ	1086.89	N
YARRIAMBIA SHIRE	LM-MAL-SPE-0039	Wathe - West Boundary	16KM SSW OF SPEED	FRB	To develop fuel reduced areas of sufficient width and continuity to reduce the speed and intensity of bushfires.	BMZ	128.65	N
YARRIAMBIA SHIRE	LM-MAL-SPE-0036	Wyperfeld - Ginap Track North	17 KM SSW OF PATCHEWOLLOCK	FRB	To provide bushfire protection by reducing overall fuel hazard and bushfire hazard in the landscape.	LMZ	302.0	N

FFMVic Lead Mallee District Planned Burns 2022/23

Local Government Area	Burn Number	Burn Name	General Location	Burn Type	Land Management Objective	FMZ	Planned Burn Size (ha)	New Burn
HINDMARSH SHIRE	LM-MAL-RAI-0056	Wyperfeld - Nine Mile Square Corridor	36KM SOUTH WEST OF PATCHEWOLLOCK	FRB	To develop fuel reduced areas of sufficient width and continuity to reduce the speed and intensity of bushfires.	BMZ	1975.0	N
MILDURA RURAL CITY	LM-MAL-HAT-0028	Annuello - Northern Boundary	31KM ESE OF HATTAH	FRB	To develop fuel reduced areas of sufficient width and continuity to reduce the speed and intensity of bushfires.	LMZ	492.5	N
MILDURA RURAL CITY	LM-MAL-HAT-0031	Annuello - Eastern Boundary	16KM WSW OF ANNUELLO	FRB	To develop fuel reduced areas of sufficient width and continuity to reduce the speed and intensity of bushfires.	BMZ	361.1	N
MILDURA RURAL CITY	LM-MAL-HAT-0032	Annuello - Southern Boundary	28KM ENE OF OUYEN	FRB	To develop fuel reduced areas of sufficient width and continuity to reduce the speed and intensity of bushfires.	BMZ	341.6	N
MILDURA RURAL CITY	LM-MAL-MIL-0059	Big Desert - Coburns Pines	18KM SW OF MURRAYVILLE	FRB	To provide bushfire protection by reducing overall fuel hazard and bushfire hazard in the landscape.	LMZ	28.3	N
MILDURA RURAL CITY	LM-MAL-MIL-0070	Big Desert - Nhill Murrayville Track West	20km SSE of MURRAYVILLE	FRB	To develop fuel reduced areas of sufficient width and continuity to reduce the speed and intensity of bushfires.	BMZ	3723.8	N
MILDURA RURAL CITY	LM-MAL-MIL-0058	Big Desert - Tutye South Boundary	10KM SOUTH OF TUTYE	FRB	To develop fuel reduced areas of sufficient width and continuity to reduce the speed and intensity of bushfires.	BMZ	359.2	N
MILDURA RURAL CITY	LM-MAL-HAT-0029	Hattah - Red Ocre Track	12KM N OF HATTAH	FRB	To develop fuel reduced areas of sufficient width and continuity to reduce the speed and intensity of bushfires.	BMZ	241.6	N

MILDURA RURAL CITY	LM-MAL-HAT-0035	Murray Sunset - Galah North Road	15KM SW OF HATTAH	FRB	To develop fuel reduced areas of sufficient width and continuity to reduce the speed and intensity of bushfires.	BMZ	207.14	N
MILDURA RURAL CITY	LM-MAL-UND-0035	Murray Sunset - Mengler Road North East	18km SW of Hattah	FRB	To develop fuel reduced areas of sufficient width and continuity to reduce the speed and intensity of bushfires.	BMZ	371.02	N
MILDURA RURAL CITY	LM-MAL-UND-0036	Murray Sunset - Mengler Road West	24KM SW OF HATTAH	FRB	To develop fuel reduced areas of sufficient width and continuity to reduce the speed and intensity of bushfires.	BMZ	54.77	N
MILDURA RURAL CITY	LM-MAL-UND-0037	Murray Sunset - South Meridian Road	32KM SW OF HATTAH	FRB	To develop fuel reduced areas of sufficient width and continuity to reduce the speed and intensity of bushfires.	BMZ	162.8	N
MILDURA RURAL CITY	LM-MAL-UND-0028	Murrayville - Township North	2KM NW OF MURRAYVILLE	FRB	To provide the highest level of localised protection to human life, property and community assets identified as highly valued including Murrayville Township.	APZ	5.9	N
MILDURA RURAL CITY	LM-MAL-MIL-0056	Patchewollock - North Boundary	13KM SE OF WALPEUP	FRB	To develop fuel reduced areas of sufficient width and continuity to reduce the speed and intensity of bushfires.	BMZ	518.3	N
MILDURA RURAL CITY	LM-MAL-MIL-0061	Patchewollock - South Boundary	10KM NW OF PATCHEWOLLOCK	FRB	To develop fuel reduced areas of sufficient width and continuity to reduce the speed and intensity of bushfires.	BMZ	447.3	N
MILDURA RURAL CITY	LM-MAL-UND-0029	Walpeup - Township West	1KM W OF WALPEUP	FRB	To develop a fuel reduced area to the West of Walpeup Township.	BMZ	8.7	N
MILDURA RURAL CITY	LM-MAL-UND-0027	Wyperfeld - Linga South Boundary	12.6KM SOUTH OF UNDERBOOL	FRB	To develop fuel reduced areas of sufficient width and continuity to reduce the speed and intensity of bushfires.	BMZ	187.8	N
MILDURA RURAL CITY	LM-MAL-RAI-0054	Wyperfeld - Messa Rocks	45KM SSE OF UNDERBOOL	FRB	To provide bushfire protection by reducing overall fuel hazard and bushfire hazard in the landscape.	LMZ	1206.8	N
MILDURA RURAL CITY	LM-MAL-RAI-0050	Wyperfeld - Milmed Rock Track West	40KM SE OF MURRAYVILLE	FRB	To provide bushfire protection by reducing overall fuel hazard and bushfire hazard in the landscape.	LMZ	544.6	N
MILDURA RURAL CITY	LM-MAL-SPE-0038	Wyperfeld - Pine Plains Boundary	17.5km WEST OF PATCHEWOLLOCK	FRB	To provide bushfire protection by reducing overall fuel hazard and bushfire hazard in the landscape.	LMZ	81.3	N
MILDURA RURAL CITY	LM-MAL-RAI-0051	Wyperfeld - Twelve Mile Patch Soak	32KM SW OF UNDERBOOL	FRB	To provide bushfire protection by reducing overall fuel hazard and bushfire hazard in the landscape.	LMZ	41.6	N
SWAN HILL RURAL CITY	LM-MAL-ROB-0044	Kooloonong - Menzies Boundary	13KM SW OF BOUNDARY BEND	FRB	To provide bushfire protection by reducing overall fuel hazard and bushfire hazard in the landscape.	LMZ	75.5	N
SWAN HILL RURAL CITY	LM-MAL-ROB-0042	Wandown - North Boundary	18KM SW OF BOUNDARY BEND	FRB	To provide bushfire protection by reducing overall fuel hazard and bushfire hazard in the landscape.	LMZ	197.4	N

SWAN HILL RURAL CITY	LM-MAL-ROB-0043	Wandown - South Boundary	15KM SW OF BOUNDARY BEND	FRB	To provide bushfire protection by reducing overall fuel hazard and bushfire hazard in the landscape.	LMZ	99.6	N
WEST WIMMERA SHIRE	LM-MAL-MIL-0065	Big Desert - Telopea Boundary	16KM NNW OF YANAC	FRB	To develop fuel reduced areas of sufficient width and continuity to reduce the speed and intensity of bushfires.	BMZ	1338.6	N
YARRIAMBIACK SHIRE	LM-MAL-RAI-0062	Dattuck - Bushland Reserve	13km N of Hopetoun	FRB	To provide bushfire protection by reducing overall fuel hazard and bushfire hazard in the landscape.	LMZ	25.0	N
YARRIAMBIACK SHIRE	LM-MAL-RAI-0052	Wyperfeld - Dattuck Yellow Gums	18.5KM NNW OF HOPETOUN	FRB	To provide bushfire protection by reducing overall fuel hazard and bushfire hazard in the landscape.	LMZ	47.4	N
YARRIAMBIACK SHIRE	LM-MAL-RAI-0049	Wyperfeld - Paradise East	19KM WNW OF HOPETOUN	FRB	To provide bushfire protection by reducing overall fuel hazard and bushfire hazard in the landscape.	LMZ	104.6	N
YARRIAMBIACK SHIRE	LM-MAL-RAI-0053	Wyperfeld - Wirribial Track	15KM NW OF HOPETOUN	FRB	To develop fuel reduced areas of sufficient width and continuity to reduce the speed and intensity of bushfires.	BMZ	819.29	N

FFMVic Lead Mallee District Planned Burns 2023/24

Local Government Area	Burn Number	Burn Name	General Location	Burn Type	Land Management Objective	FMZ	Planned Burn Size (ha)	New Burn
HINDMARSH SHIRE	LM-MAL-MIL-0068	Big Desert - Netting Fence Central	38KM WSW OF RAINBOW	FRB	To develop fuel reduced areas of sufficient width and continuity to reduce the speed and intensity of bushfires.	BMZ	716.8	N
HINDMARSH SHIRE	LM-MAL-MIL-0066	Big Desert - Nhill Murrayville Track South	42KM NNW OF YANAC	FRB	To develop fuel reduced areas of sufficient width and continuity to reduce the speed and intensity of bushfires.	BMZ	2733.7	N
HINDMARSH SHIRE	LM-MAL-MIL-0072	Big Desert - Wagon Flat Boundary	23KM N OF YANAC	FRB	To develop fuel reduced areas of sufficient width and continuity to reduce the speed and intensity of bushfires.	BMZ	440.2	N
HINDMARSH SHIRE	LM-MAL-RAI-0058	Wyperfeld - Archibald Track Corridor	28KM NNW OF RAINBOW	FRB	To develop fuel reduced areas of sufficient width and continuity to reduce the speed and intensity of bushfires.	BMZ	2057.9	N
HINDMARSH SHIRE	LM-MAL-RAI-0057	Wyperfeld - Nine Mile Square East Corridor	32.5KM NORTH OF RAINBOW	FRB	To develop fuel reduced areas of sufficient width and continuity to reduce the speed and intensity of bushfires.	BMZ	1036.5	N
HINDMARSH SHIRE	LM-MAL-RAI-0064	Wyperfeld - South Wyperfeld WZ	43km NW of Rainbow	FRB	To develop fuel reduced areas of sufficient width and continuity to reduce the speed and intensity of bushfires.	BMZ	1318.05	N
MILDURA RURAL CITY	LM-MAL-HAT-0030	Annuello - Broken Glass Track West	25KM NE OF OUYEN	FRB	To provide bushfire protection by reducing overall fuel hazard and bushfire hazard in the landscape.	LMZ	430.4	N

MILDURA RURAL CITY	LM-MAL-HAT-0034	Annuello - North West Boundary	18KM SE OF HATTAH	FRB	To develop fuel reduced areas of sufficient width and continuity to reduce the speed and intensity of bushfires.	BMZ	694.5	N
MILDURA RURAL CITY	LM-MAL-HAT-0033	Annuello - South West Boundary	20KM NE OF OUYEN	FRB	To develop fuel reduced areas of sufficient width and continuity to reduce the speed and intensity of bushfires.	BMZ	578.5	N
MILDURA RURAL CITY	LM-MAL-HAT-0037	Hattah - Calder Highway East	9KM NNW OF HATTAH	FRB	To develop a fuel reduced area to the East of Calder Highway and Power Transmission lines.	BMZ	279.5	N
MILDURA RURAL CITY	LM-MAL-HAT-0041	Hattah – Dumosa Track	17KM N OF HATTAH	ECO	To provide bushfire protection by reducing overall fuel hazard and bushfire hazard in the landscape.	LMZ	131.1	N
MILDURA RURAL CITY	LM-MAL-UND-0040	Murray Sunset – Bellbird Boltons Road Boundary	25KM NNW OF MURRAYVILLE	FRB	To provide bushfire protection by reducing overall fuel hazard and bushfire hazard in the landscape.	LMZ	430.6	N
MILDURA RURAL CITY	LM-MAL-HAT-0039	Murray Sunset – Calder Highway West	5KM SOUTH OF HATTAH	FRB	To develop a fuel reduced area to the West of Calder Highway and Freight Rail corridor.	BMZ	401.0	N
MILDURA RURAL CITY	LM-MAL-WER-0010	Murray Sunset – Nowingi Line Track	38km NW of Hattah	FRB	To provide bushfire protection by reducing overall fuel hazard and bushfire hazard in the landscape.	LMZ	694.57	N
MILDURA RURAL CITY	LM-MAL-UND-0039	Murray Sunset - South West Boundary	22KM N OF MURRAYVILLE	FRB	To develop fuel reduced areas of sufficient width and continuity to reduce the speed and intensity of bushfires.	BMZ	856.5	N
MILDURA RURAL CITY	LM-MAL-UND-0041	Murray Sunset - Trinita North Boundary	26KM N OF OUYEN	FRB	To develop fuel reduced areas of sufficient width and continuity to reduce the speed and intensity of bushfires.	BMZ	327.6	N
MILDURA RURAL CITY	LM-MAL-UND-0032	Murray Sunset - Tutye North Boundary	21KM N OF TUTYE	FRB	To develop fuel reduced areas of sufficient width and continuity to reduce the speed and intensity of bushfires.	BMZ	289.7	N
MILDURA RURAL CITY	LM-MAL-UND-0043	Murray Sunset - Wymlet Boundary	21KM NW OF WALPEUP	FRB	To develop fuel reduced areas of sufficient width and continuity to reduce the speed and intensity of bushfires.	BMZ	1023.56	N

SCHEDULE 1: FFMVic LEAD MURRAY GOLDFIELDS DISTRICT – PLANNED BURNING

FFMVic Lead Murray Goldfields District Planned Burns 2021/22

Local Government Area	Burn Number	Burn Name	General Location	Burn Type	Land Management Objective	FMZ	Planned Burn Size (ha)	New Burn
CAMPASPE SHIRE	LM-MGF-BGO-0754	Echuca Village - YYNAC Kanyapella	9.2km NE of Echuca Village	TO	To modify the vegetation Abundance across the planned area to assist the Promotion of Riverine Woodland.	LMZ	169.72	Y
CAMPASPE SHIRE	LM-MGF-BGO-0483	Kanyapella - Castle Tk - YYNAC	13km E of Echuca	TO	To modify the vegetation Abundance across the planned area to assist the Promotion of Riverine Woodland.	LMZ	4.64	N
CAMPASPE SHIRE	LM-MGF-ECH-0030	Kanyapella - Mitchell Rd YYNAC	13km E of Echuca	TO	To modify the vegetation Abundance across the planned area to assist the Promotion of Riverine Woodland.	LMZ	47.37	N
CAMPASPE SHIRE	LM-MGF-BGO-0484	Kanyapella - Scott Rd YYNAC	13km E of Echuca	TO	To modify the vegetation Abundance across the planned area to assist the Promotion of Riverine Woodland.	LMZ	21.64	N
CAMPASPE SHIRE	LM-MGF-RUS-0136	Murchison - YYNAC Waranga BR	6.3km W of Murchison	TO	To modify the vegetation Abundance across the planned area to assist the Promotion of Riverine Woodland.	LMZ	139.10	Y
CAMPASPE SHIRE	LM-MGF-RUS-0042	Rushworth - Old Tatura Rd	1km N of Rushworth	FRB	To develop fuel reduced areas of sufficient width and continuity to reduce the speed and intensity of bushfires.	BMZ	39.13	Y
CAMPASPE SHIRE	LM-MGF-RUS-0036	Rushworth - Peppercorn Ln	3km W of Rushworth	FRB	To develop fuel reduced areas of sufficient width and continuity to reduce the speed and intensity of bushfires.	BMZ	8.21	Y
CAMPASPE SHIRE	LM-MGF-COH-0007	Terrick Terrick NP - Roslynmead North	10.2km SW of Torrumbarry	ECO	To modify the vegetation Abundance across the planned area to assist the Promotion of Alluvial Plains Grassland.	LMZ	30.83	N
CAMPASPE SHIRE	LM-MGF-COH-0092	Terrick Terrick NP - Torrumberry	11.3km S of Torrumbarry	ECO	To modify the vegetation Abundance across the planned area to assist the Promotion of Alluvial Plains Grassland.		58.04	N
CAMPASPE SHIRE	LM-MGF-BGO-0756	Torrumbarry - YYNAC Baillieu Lagoon WR	4.2km E of Torrumbarry	TO	To modify the vegetation Abundance across the planned area to assist the Promotion of Riverine Woodland.	LMZ	2.97	Y
CAMPASPE SHIRE	LM-MGF-BGO-0751	Torrumbarry - YYNAC Baillieu Road RMR	5.4km E of Torrumbarry	TO	To modify the vegetation Abundance across the planned area to assist the Promotion of Riverine Woodland.	LMZ	3.95	Y

CAMPASPE SHIRE	LM-MGF-RUS-0131	Waranga Shores - YYNAC Kilmartin Road	14.3km SW of Tatura	TO	To modify the vegetation Abundance across the planned area to assist the Promotion of Grassy / Heathy Dry Forest.	LMZ	87.37	Y
CAMPASPE SHIRE	LM-MGF-BGO-0752	Wharparilla - YYNAC RMR Bertha Bend 3 Farley Road	16km W of Echuca	TO	To modify the vegetation Abundance across the planned area to assist the Promotion of Riverine Woodland.	LMZ	13.54	Y
CAMPASPE SHIRE	LM-MGF-BGO-0755	Wharparilla North - YYNAC RMR Farley Bend	15km E of Echuca	TO	To modify the vegetation Abundance across the planned area to assist the Promotion of Riverine Woodland.	LMZ	11.63	Y
CAMPASPE SHIRE	LM-MGF-ECH-0043	Wyuna - YYNAC - Wyuna Station	3.8km SE of Yambuna	TO	To modify the vegetation Abundance across the planned area to assist the Promotion of Riverine Woodland.	LMZ	4.71	N
CAMPASPE SHIRE	LM-MGF-BGO-0482	Wyuna - YYNAC- Dawson Bend-LGNP	4.57km NW of Wyuna	TO	To modify the vegetation Abundance across the planned area to assist the Promotion of Riverine Woodland.	LMZ	4.65	N
CAMPASPE SHIRE	LM-MGF-BGO-0753	Wyuna - YYNAC King Paddy Road	3.8km N of Wyuna	TO	To modify the vegetation Abundance across the planned area to assist the Promotion of Riverine Woodland.	LMZ	87.60	N
CAMPASPE SHIRE	LM-MGF-BGO-0481	Wyuna - YYNAC- Emily Jane LGNP	4.57km NW of Wyuna	TO	To modify the vegetation Abundance across the planned area to assist the Promotion of Riverine Woodland.	LMZ	1.64	N
CAMPASPE SHIRE	LM-MGF-BGO-0480	Wyuna - YYNAC- Millers Bend-LGNP	6.83km NW of Wyuna	TO	To modify the vegetation Abundance across the planned area to assist the Promotion of Riverine Woodland.	LMZ	9.29	N
CAMPASPE SHIRE	LM-MGF-BGO-0479	Wyuna - YYNAC- Wyuna 97-LGNP	5.9km NW of Wyuna	TO	To modify the vegetation Abundance across the planned area to assist the Promotion of Riverine Woodland.	LMZ	10.68	N
CAMPASPE SHIRE	LM-MGF-BGO-0478	Wyuna - YYNAC- Wyuna Track-LGNP	4.65km NE of Wyuna	TO	To modify the vegetation Abundance across the planned area to assist the Promotion of Riverine Woodland.	LMZ	4.77	N
CAMPASPE SHIRE	LM-MGF-BGO-0477	Wyuna - YYNAC- Yambuna-Black Gate LGNP	8.37km NW of Wyuna	TO	To modify the vegetation Abundance across the planned area to assist the Promotion of Riverine Woodland.	LMZ	4.49	N
CENTRAL GOLDFIELDS SHIRE	LM-MGF-MRY-0229	Maryborough - Djandak Wi	5.5km N of Maryborough	TO	To modify the vegetation Abundance across the planned area to assist the Promotion of Ironbark.	LMZ	26.44	N
CENTRAL GOLDFIELDS SHIRE	LM-MGF-MRY-0019	Maryborough - Pigeon Gully Tk	3.5km NE of Maryborough	FRB	To develop fuel reduced areas of sufficient width and continuity to reduce the speed and intensity of bushfires.	BMZ	47.99	N
CENTRAL GOLDFIELDS SHIRE	LM-MGF-MRY-0224	Merin Merin & Middle Swamp WR - Wattle Gully road	7.9km N of Clunes	TO	To modify the vegetation Abundance across the planned area to assist the Promotion of Freshwater Wetland (ephemeral).	LMZ	330.60	Y

CENTRAL GOLDFIELDS SHIRE	LM-MGF-MRY-0017	Mount Hooghly - White Tk	3km SW of Dunolly	FRB	To develop fuel reduced areas of sufficient width and continuity to reduce the speed and intensity of bushfires.	BMZ	161.07	N
GANNAWARRA SHIRE	LM-MGF-COH-0002	Bael Bael Grassland NCR - Block 15	20km NE of Kerang	ECO	To modify the vegetation Abundance across the planned area to assist the Promotion of Alluvial Plains Grassland.	LMZ	84.24	N
GANNAWARRA SHIRE	LM-MGF-COH-0005	Bael Bael Grassland NCR - Block 18	20km NW of Kerang	ECO	To modify the vegetation Abundance across the planned area to assist the Promotion of Alluvial Plains Grassland.	LMZ	204.54	N
GANNAWARRA SHIRE	LM-MGF-COH-0093	Budgerum - Barapa Barapa Budgerum SSR	.7km N of Budgerum	TO	To modify the vegetation Abundance across the planned area to assist the Promotion of Treed Swampy Wetland.	LMZ	21.60	N
GANNAWARRA SHIRE	LM-MGF-COH-0096	Gannawarra Red Gum Swamp NCR - barapa Red Gum Swamp	1.7km S of Teal point	TO	To modify the vegetation Abundance across the planned area to assist the Promotion of Treed Swampy Wetland.	LMZ	138.30	Y
GANNAWARRA SHIRE	LM-MGF-COH-0051	Kerang - BLW Kerang WR	3.2km NE of Kerang	TO	To modify the vegetation Abundance across the planned area to assist the Promotion of Treed Swampy Wetland.	LMZ	36.49	N
GANNAWARRA SHIRE	LM-MGF-COH-0046	Kerang - BLW- Tragowel swamp NCR Block 1	9.2km N of Kerang	TO	To modify the vegetation Abundance across the planned area to assist the Promotion of Treed Swampy Wetland.	LMZ	7.92	N
GANNAWARRA SHIRE	LM-MGF-COH-0052	Kerang South - BLW Tragowel Swamp NCR	10km S of Kerang	TO	To modify the vegetation Abundance across the planned area to assist the Promotion of Treed Swampy Wetland.	PBEZ	21.10	N
GANNAWARRA SHIRE	LM-MGF-COH-0044	Korrak Korrak - BLW Korrak Korrak NCR	29.3km E of Kerrang	TO	To modify the vegetation Abundance across the planned area to assist the Promotion of Alluvial Plains Grassland.	LMZ	83.33	N
GANNAWARRA SHIRE	LM-MGF-COH-0049	Macorna North - BLW Johnson Swamp WR block 1	13km W of Cohuna	TO	To modify the vegetation Abundance across the planned area to assist the Promotion of Treed Swampy Wetland.	LMZ	8.51	N
GANNAWARRA SHIRE	LM-MGF-COH-0050	Macorna North - BLW Johnson Swamp WR block 2	13km W of Cohuna	TO	To modify the vegetation Abundance across the planned area to assist the Promotion of Treed Swampy Wetland.		17.80	N
GANNAWARRA SHIRE	LM-MGF-COH-0056	Macorna North - Hird Swamp WR	12km SW of Cohuna	TO	To modify the vegetation Composition across the planned area to assist the Promotion of Treed Swampy Wetland.	LMZ	14.24	Y
GANNAWARRA SHIRE	LM-MGF-COH-0045	Rowlands - BLW Flannerys NCR	10.8km E of Leitchville	TO	To modify the vegetation Abundance across the planned area to assist the Promotion of Treed Swampy Wetland.	LMZ	5.10	N
GANNAWARRA SHIRE	LM-MGF-COH-0048	Rowlands - BLW Flannerys NCR sc block	10km E of Leitchville	TO	To modify the vegetation Abundance across the planned area to assist the Promotion of Treed Swampy Wetland.	LMZ	7.41	N

GANNAWARRA SHIRE	LM-MGF-COH-0054	Rowlands - Blw Flannerys NCR SW block	10km E of Leitchville	TO	To modify the vegetation Abundance across the planned area to assist the Promotion of Treed Swampy Wetland.		8.34	N
GREATER BENDIGO CITY	LM-MGF-BGO-0468	Ascot - Harper Rd	2km E of Epsom	FRB	To provide bushfire protection by reducing overall fuel hazard and bushfire hazard in the landscape.	LMZ	234.99	N
GREATER BENDIGO CITY	LM-MGF-BGO-0112	Bendigo - One Tree Hill Block 8	5km S of Bendigo	FRB	To provide the highest level of localised protection to human life, property and community assets identified as highly valued including the OTH fire tower and the Mandurang township.	APZ	54.40	N
GREATER BENDIGO CITY	LM-MGF-BGO-0118	Big Hill - Channel Tk	3.2km SSE of Kangaroo Flat	FRB	To develop fuel reduced areas of sufficient width and continuity to reduce the speed and intensity of bushfires.	BMZ	26.31	N
GREATER BENDIGO CITY	LM-MGF-BGO-0467	Eppalock - Magpie Tk	6km S of Axedale	FRB	To provide bushfire protection by reducing overall fuel hazard and bushfire hazard in the landscape.	LMZ	33.02	N
GREATER BENDIGO CITY	LM-MGF-HTH-0012	HEATHCOTE - FOREST DR	500M EAST OF HEATHCOTE	FRB	To provide the highest level of localised protection to human life, property and community assets identified as highly valued including township of Heathcote.	APZ	280.65	N
GREATER BENDIGO CITY	LM-MGF-BGO-0727	Hunter - Elmore-Cohuna Rail line BR	10km NW of Elmore	TO	To modify the vegetation Abundance across the planned area to assist the Promotion of Grassy / Heathy Dry Forest.	LMZ	3.88	N
GREATER BENDIGO CITY	LM-MGF-BGO-0514	Huntly - Huntly SSR	1.8km W of Huntly	TO	To modify the vegetation Abundance across the planned area to assist the Promotion of Inland Plains Woodland.	LMZ	47.58	N
GREATER BENDIGO CITY	LM-MGF-BGO-0758	Huntly - Viola Rd	1.2km NE of Huntly	FRB	To provide the highest level of localised protection to human life, property and community assets identified as highly valued including Adjacent homes.	APZ	2.31	N
GREATER BENDIGO CITY	LM-MGF-BGO-0525	Kamarooka - Millwood Rd Block 1	10km E of Raywood	TO	To modify the vegetation Abundance across the planned area to assist the Promotion of Ironbark.	LMZ	286.48	N
GREATER BENDIGO CITY	LM-MGF-BGO-0030	Kangaroo Flat - Tipperary Ln	1.4km SE of Kangaroo Flat	FRB	To build on protection works in adjacent Asset Protection Zone.	BMZ	32.21	N
GREATER BENDIGO CITY	LM-MGF-BGO-0027	Kimbolton - Tracey Tk	1km E of Kimbolton	FRB	To develop fuel reduced areas of sufficient width and continuity to reduce the speed and intensity of bushfires.	BMZ	201.02	N
GREATER BENDIGO CITY	LM-MGF-BGO-0473	Lockwood - Bradford Rd	3.3km W of Lockwood South	FRB	To develop fuel reduced areas of sufficient width and continuity to reduce the speed and intensity of bushfires.	BMZ	199.26	N
GREATER BENDIGO CITY	LM-MGF-BGO-0104	Maiden Gully - Fowlers Rd	2.0 km South West of Eaglehawk	FRB	To provide the highest level of localised protection to human life, property and community assets identified as highly valued including Eaglehawk, California Gully and Long Gully.	APZ	26.13	N
GREATER BENDIGO CITY	LM-MGF-BGO-0747	Myrtle Creek - Abbots Trk	4.0km N of Myrtle Creek	TO	To modify the vegetation Abundance across the planned area to assist the Promotion of Ironbark.	LMZ	25.62	Y

GREATER BENDIGO CITY	LM-MGF-HTH-0066	One Eye SF - Thomas Tk	5km NW of Heathcote	FRB	To provide bushfire protection by reducing overall fuel hazard and bushfire hazard in the landscape.	LMZ	186.25	Y
GREATER BENDIGO CITY	LM-MGF-BGO-0531	Strathdale - Scrub Tk - Dja Dja Wurrung	4.5km SE of Bendigo	TO	To modify the vegetation Abundance across the planned area to assist the Promotion of Ironbark.	LMZ	28.66	N
GREATER BENDIGO CITY	LM-MGF-BGO-0471	STRATHDALE - WILDFLOWER DR	5KM SE OF BENDIGO	FRB	To provide the highest level of localised protection to human life, property and community assets identified as highly valued including Strathfieldsaye and Junortoun.	APZ	192.23	N
GREATER BENDIGO CITY	LM-MGF-BGO-0470	Strathfieldsaye - Pioneer Rd	2.4km W of Strathfieldsaye	FRB	To provide the highest level of localised protection to human life, property and community assets identified as highly valued including Strathfieldsaye township.	APZ	48.49	N
GREATER BENDIGO CITY	LM-MGF-BGO-0523	Whipstick - Evans Rd	8km NW of Huntly	TO	To modify the vegetation Abundance across the planned area to assist the Promotion of Ironbark.	LMZ	43.11	Y
GREATER BENDIGO CITY	LM-MGF-BGO-0524	Whipstick - Nuggety Rd	6.5km W of Huntly	TO	To modify the vegetation Abundance across the planned area to assist the Promotion of Ironbark.	LMZ	205.66	Y
GREATER BENDIGO CITY	LM-MGF-BGO-0530	White Hills - Long Gully Ck	2.5km N of Bendigo	TO	To modify the vegetation Abundance across the planned area to assist the Promotion of Riverine Woodland.	APZ	9.89	Y
GREATER SHEPPARTON CITY	LM-MGF-RUS-0134	Murchison - YYNAC Charles Lane	1.1km W of Murchison	TO	To modify the vegetation Abundance across the planned area to assist the Promotion of Riverine Woodland.	LMZ	1.32	Y
GREATER SHEPPARTON CITY	LM-MGF-RUS-0133	Murchison - YYNAC Charles Lane 1	1.1km E of Murchison	TO	To modify the vegetation Abundance across the planned area to assist the Promotion of Riverine Woodland.	NZ	1.98	Y
GREATER SHEPPARTON CITY	LM-MGF-RUS-0135	Murchison - YYNAC Molka Station	4.5km S of Murchison	TO	To modify the vegetation Abundance across the planned area to assist the Promotion of Grassy / Heathy Dry Forest.	LMZ	41.59	Y
GREATER SHEPPARTON CITY	LM-MGF-RUS-0127	Murchison - YYNAC Murchison BR	4.9km NW of Murchison	TO	To modify the vegetation Abundance across the planned area to assist the Promotion of Riverine Woodland.	LMZ	34.22	Y
GREATER SHEPPARTON CITY	LM-MGF-RUS-0130	Murchison - YYNAC Station Street	0.5km S of Murchison	TO	To modify the vegetation Abundance across the planned area to assist the Promotion of Grassy / Heathy Dry Forest.	NZ	1.68	Y
GREATER SHEPPARTON CITY	LM-MGF-RUS-0128	Waranga Shores - YYNAC Bitcon Road	12km SW of Tatura	TO	To modify the vegetation Abundance across the planned area to assist the Promotion of Grassy / Heathy Dry Forest.	LMZ	0.19	Y
HEPBURN SHIRE	LM-MGF-CAS-0074	Taradale-Kemps Tk	3.5 Km South West of Taradale	FRB	To develop fuel reduced areas of sufficient width and continuity to reduce the speed and intensity of bushfires.	BMZ	260.63	Y
LODDON SHIRE	LM-MGF-ING-0191	Boort - DDW Boort Yando Rd	3.3km W of Boort	TO	To modify the vegetation Structure across the planned area to assist the Promotion of Treed Swampy Wetland.	LMZ	2.02	Y

LODDON SHIRE	LM-MGF-ING-0267	Boort - Lake Boort WR	1km S of Boort	TO	To modify the vegetation Composition across the planned area to assist the Promotion of Treed Swampy Wetland.	LMZ	27.30	N
LODDON SHIRE	LM-MGF-ING-0268	Boort - Woolshed Swamp WR S	8km S of Boort	TO	To modify the vegetation Structure across the planned area to assist the Promotion of Native Grasslands.	LMZ	12.52	N
LODDON SHIRE	LM-MGF-ING-0195	Boort - Woolshed Swamp WR SW	6.5km S of Boort	TO	To modify the vegetation Composition across the planned area to assist the Promotion of Treed Swampy Wetland.	LMZ	41.77	N
LODDON SHIRE	LM-MGF-ING-0015	Borong - Ngarri	5.6km N of Korong Vale	TO	To modify the vegetation Abundance across the planned area to assist the Promotion of kangaroo grass.	LMZ	339.29	Y
LODDON SHIRE	LM-MGF-ING-0014	DDW - Boort Lake Lyndger	Boort	TO	To modify the vegetation Abundance across the planned area to assist the Promotion of Grassy / Heathy Dry Forest.	PBEZ	105.28	N
LODDON SHIRE	LM-MGF-BGO-0522	Dingee - Tang Tang Swamp	4km E of Dingee	TO	To modify the vegetation Abundance across the planned area to assist the Promotion of Treed Swampy Wetland.	LMZ	131.70	N
LODDON SHIRE	LM-MGF-BGO-0111	Dingee - Tang Tang Swamp Block 1 NW	4km E of Dingee	TO	To modify the vegetation Structure across the planned area to assist the Promotion of Native Grasslands.	LMZ	21.27	N
LODDON SHIRE	LM-MGF-ING-0179	Inglewood - Powlett Rd	4km N of Inglewood	FRB	To provide bushfire protection by reducing overall fuel hazard and bushfire hazard in the landscape.	LMZ	231.53	Y
LODDON SHIRE	LM-MGF-BGO-0529	Kooyoora - Kneebone Tk	11.5km W of Inglewood	TO	To modify the vegetation Abundance across the planned area to assist the Promotion of Inland Plains Woodland.	LMZ	106.03	N
LODDON SHIRE	LM-MGF-ING-0272	Mysia NCR - Old Boort Rd	3.5km SW of Mysia	TO	To modify the vegetation Abundance across the planned area to assist the Promotion of Alluvial Plains Grassland.	LMZ	33.63	N
LODDON SHIRE	LM-MGF-ING-0192	Rheola - Burnt Bridge Rd	16.5km SW of Inglewood	TO	To modify the vegetation Abundance across the planned area to assist the Promotion of Ironbark.	BMZ	80.19	N
LODDON SHIRE	LM-MGF-BGO-0760	Tandarra - Thunder Swamp	7.5km SE of Dingee	TO	To modify the vegetation Abundance across the planned area to assist the Promotion of Alluvial Plains Grassland.	LMZ	148.46	N
LODDON SHIRE	LM-MGF-COH-0087	Terrick Terrick NP - ONeills Block	20.5km S of Leitchville	ECO	To modify the vegetation Structure across the planned area to assist the Promotion of Alluvial Plains Grassland.	LMZ	30.79	N
LODDON SHIRE	LM-MGF-ING-0193	Wehla - Logan-Kingower Rd	6km E of Logan	TO	To modify the vegetation Abundance across the planned area to assist the Promotion of Ironbark.	LMZ	71.10	N
LODDON SHIRE	LM-MGF-ING-0194	Wehla - Perrys Tk	5km E of Logan	TO	To modify the vegetation Abundance across the planned area to assist the Promotion of Ironbark.	LMZ	98.77	N

MACEDON RANGES SHIRE	LM-MGF-MAC-0046	Macedon - Alpine Av	1.5km W of Macedon	FRB	To provide the highest level of localised protection to human life, property and community assets identified as highly valued including Macedon township.	APZ	31.23	N
MACEDON RANGES SHIRE	LM-MGF-MAC-0010	Macedon - Bawden Rd	2km W of Mount Macedon	FRB	To build on protection works in adjacent Asset Protection Zone.	BMZ	157.26	N
MACEDON RANGES SHIRE	LM-MGF-MAC-0006	Macedon - Waterworks Rd	4.3km E of Woodend	FRB	To provide the highest level of localised protection to human life, property and community assets identified as highly valued including Braemar College.	APZ	30.28	N
MACEDON RANGES SHIRE	LM-MGF-MAC-0082	Macedon - Wurundjeri Bawden Rd	3.5km N of Macedon	TO	To modify the vegetation Abundance across the planned area to assist the Promotion of Grassy / Heathy Dry Forest.	BMZ	22.28	N
MOUNT ALEXANDER SHIRE	LM-MGF-CAS-0403	Castlemaine - Barkers Creek	4km N of Castlemaine	FRB	To provide the highest level of localised protection to human life, property and community assets identified as highly valued including Local Township.	APZ	23.32	N
MOUNT ALEXANDER SHIRE	LM-MGF-CAS-0402	Castlemaine - Castlemaine	3km NW of Castlemaine	FRB	To develop fuel reduced areas of sufficient width and continuity to reduce the speed and intensity of bushfires.	BMZ	9.56	N
MOUNT ALEXANDER SHIRE	LM-MGF-CAS-0247	Castlemaine - Kalimna Park	1.7km NE of Castlemaine	FRB	To develop fuel reduced areas of sufficient width and continuity to reduce the speed and intensity of bushfires.	BMZ	24.86	Y
MOUNT ALEXANDER SHIRE	LM-MGF-CAS-0259	Castlemaine - Montgomery St Grassland	1.4km E of Castlemaine	TO	To modify the vegetation Abundance across the planned area to assist the Promotion of Alluvial Plains Grassland.	LMZ	0.62	N
MOUNT ALEXANDER SHIRE	LM-MGF-CAS-0241	Elphinstone - Green Tk	2km SW of Elphinstone	FRB	To develop fuel reduced areas of sufficient width and continuity to reduce the speed and intensity of bushfires.	BMZ	66.86	Y
MOUNT ALEXANDER SHIRE	LM-MGF-CAS-0243	Glenluce - Columbine Creek	2.8km E of Glenluce	FRB	To develop fuel reduced areas of sufficient width and continuity to reduce the speed and intensity of bushfires.	BMZ	78.73	Y
MOUNT ALEXANDER SHIRE	LM-MGF-CAS-0245	Glenluce - Helge Tk	5km SW of Fryerstown	FRB	To develop fuel reduced areas of sufficient width and continuity to reduce the speed and intensity of bushfires.	BMZ	344.31	Y
MOUNT ALEXANDER SHIRE	LM-MGF-CAS-0420	Newstead - Spring Hill Tk	2.1km N of Newstead	TO	To modify the vegetation Abundance across the planned area to assist the Promotion of Grassy / Heathy Dry Forest.	LMZ	127.70	Y
NORTHERN GRAMPIANS SHIRE	LM-MGF-STA-0049	Barkly - Kara Kara NP Blue Gum Tk	13.5km E of Navarre	TO	To modify the vegetation Abundance across the planned area to assist the Promotion of Ironbark.	LMZ	292.91	N
NORTHERN GRAMPIANS SHIRE	LM-MGF-STA-0041	Moolerr - Queen Mary Rd	4.5km SW of St Arnaud	FRB	To provide bushfire protection by reducing overall fuel hazard and bushfire hazard in the landscape.	LMZ	91.56	Y
NORTHERN GRAMPIANS SHIRE	LM-MGF-STA-0034	St Arnaud - Argenta Rd	1.5km N of St Arnaud	FRB	To provide the highest level of localised protection to human life, property and community assets identified as highly valued including St Arnaud township.	APZ	39.77	N

NORTHERN GRAMPIANS SHIRE	LM-MGF-STA-0038	St Arnaud - Burnside Rd	1.5km SW of St Arnaud	FRB	To provide the highest level of localised protection to human life, property and community assets identified as highly valued including the St Arnaud township.	APZ	43.41	N
PYRENEES SHIRE	LM-MGF-AVO-0046	Avoca - Hill Tk	4.5km E of Avoca	FRB	To develop fuel reduced areas of sufficient width and continuity to reduce the speed and intensity of bushfires.	BMZ	40.63	Y
PYRENEES SHIRE	LM-MGF-AVO-0045	Glenlofty - Dridan Tk	3km NW of Nowhere Creek	FRB	To provide bushfire protection by reducing overall fuel hazard and bushfire hazard in the landscape.	LMZ	315.28	Y
PYRENEES SHIRE	LM-MGF-AVO-0027	Percydale - Fraser Tk	9.5km W of Avoca	FRB	To develop fuel reduced areas of sufficient width and continuity to reduce the speed and intensity of bushfires.	BMZ	178.08	Y
PYRENEES SHIRE	LM-MGF-AVO-0030	Redbank - Richmond Tk -DDW	3km SE of Redbank	TO	To modify the vegetation Abundance across the planned area to assist the Promotion of Ironbark.	BMZ	3.03	N
STRATHBOGIE SHIRE	LM-MGF-HTH-0037	Redcastle - Old Coach Rd	2km S of Redcastle	FRB	To develop fuel reduced areas of sufficient width and continuity to reduce the speed and intensity of bushfires.	BMZ	253.73	Y
SWAN HILL RURAL CITY	LM-MGF-ING-0181	Winlaton - Winlaton NCR	12km E of Lake Boga	TO	To modify the vegetation Abundance across the planned area to assist the Promotion of Grassy / Heathy Dry Forest.	LMZ	9.51	N
SWAN HILL RURAL CITY	LM-MGF-COH-0094	Winlaton NCR - Winlaton NCR	3.1km SW of Benjeroop	TO	To modify the vegetation Abundance across the planned area to assist the Promotion of Treed Swampy Wetland.	LMZ	71.71	N
SWAN HILL RURAL CITY	LM-MGF-COH-0094	Winlaton NCR - Winlaton NCR	3.1km SW of Benjeroop	TO	To modify the vegetation Abundance across the planned area to assist the Promotion of Treed Swampy Wetland.	LMZ	71.71	N

FFMVic Lead Murray Goldfields District Planned Burns 2022/23

Local Government Area	Burn Number	Burn Name	General Location	Burn Type	Land Management Objective	FMZ	Planned Burn Size (ha)	New Burn
CAMPASPE SHIRE	LM-MGF-RUS-0044	Rushworth - Mortimer Rd	2km E of Rushworth	FRB	To develop fuel reduced areas of sufficient width and continuity to reduce the speed and intensity of bushfires.	BMZ	22.79	Y
CAMPASPE SHIRE	LM-MGF-RUS-0038	Whroo - Old Place Rd	4km W of Whroo	FRB	To provide bushfire protection by reducing overall fuel hazard and bushfire hazard in the landscape.	LMZ	199.41	N
CAMPASPE SHIRE	LM-MGF-COH-0015	Yorta Yorta - Kow Swamp	Leitchville	TO	To modify the vegetation Abundance across the planned area to assist the Promotion of Treed Swampy Wetland.	NZ	255.27	N
CENTRAL GOLDFIELDS SHIRE	LM-MGF-MRY-0013	Maryborough - Reserve Tk	3.5km SW of Maryborough	FRB	To develop fuel reduced areas of sufficient width and continuity to reduce the speed and intensity of bushfires.	BMZ	79.4	N

GANNAWARRA SHIRE	LM-MGF-COH-0099	Benjeroop WR - Barapa Benjeroop WR	6.3km SW of Murrabit	TO	To modify the vegetation Abundance across the planned area to assist the Promotion of Treed Swampy Wetland.	LMZ	247.11	Y
GANNAWARRA SHIRE	LM-MGF-COH-0100	Dartagook WR - Barapa Dartagook WR	8.6km SW of Murrabit	TO	To modify the vegetation Abundance across the planned area to assist the Promotion of Treed Swampy Wetland.	LMZ	276.21	Y
GANNAWARRA SHIRE	LM-MGF-COH-0061	Flannery NCR - Barapa Flannerys NCR	11km SW of Cohuna	TO	To modify the vegetation Abundance across the planned area to assist the Promotion of Treed Swampy Wetland.	LMZ	37.24	N
GANNAWARRA SHIRE	LM-MGF-COH-0098	Kerang - Barapa Plumtons WR	7.5km NE of Kerang	TO	To modify the vegetation Abundance across the planned area to assist the Promotion of Treed Swampy Wetland.	LMZ	161.77	Y
GANNAWARRA SHIRE	LM-MGF-COH-0095	Rowland NCR - Barapa Rowlands NCR	10km SW of Cohuna	TO	To modify the vegetation Abundance across the planned area to assist the Promotion of Treed Swampy Wetland.	LMZ	123.89	N
GREATER BENDIGO CITY	LM-MGF-BGO-0742	Axedale - Axe Creek	5km N of Axedale	TO	To modify the vegetation Abundance across the planned area to assist the Promotion of Alluvial Plains Grassland.	LMZ	3.12	Y
GREATER BENDIGO CITY	LM-MGF-BGO-0466	Big Hill - High Level Tk	1.5km SW of Big Hill	FRB	To develop fuel reduced areas of sufficient width and continuity to reduce the speed and intensity of bushfires.	BMZ	92.61	N
GREATER BENDIGO CITY	LM-MGF-BGO-0124	DDW - Mandurang Bubbs Tk	Mandurang	TO	To modify the vegetation Abundance across the planned area to assist the Promotion of Ironbark.	BMZ	126.23	N
GREATER BENDIGO CITY	LM-MGF-BGO-0121	DDW - Mandurang South Leangarook Trk	Mandurang	TO	To modify the vegetation Abundance across the planned area to assist the Promotion of Ironbark.	LMZ	143.26	N
GREATER BENDIGO CITY	LM-MGF-BGO-0741	Eppalock BR - Campaspe River	6.8km S of Axedale	TO	To modify the vegetation Abundance across the planned area to assist the Promotion of Alluvial Plains Grassland.	LMZ	18.52	Y
GREATER BENDIGO CITY	LM-MGF-BGO-0472	Flora Hill - Edwards Rd	3.7km SE of Bendigo	FRB	To provide the highest level of localised protection to human life, property and community assets identified as highly valued including adjacent properties.	APZ	71.15	Y
GREATER BENDIGO CITY	LM-MGF-BGO-0103	Jackass Flat NCR	1.5 KM WEST OF WHITE HILLS BENDIGO	FRB	To provide the highest level of localised protection to human life, property and community assets identified as highly valued including Jackass Flat and White Hills .	APZ	12.74	Y
GREATER BENDIGO CITY	LM-MGF-BGO-0117	KAMAROOKA - HARTLANDS ROAD	8 km East of Raywood	FRB	To provide bushfire protection by reducing overall fuel hazard and bushfire hazard in the landscape.	LMZ	681.6	N
GREATER BENDIGO CITY	LM-MGF-BGO-0527	Kamarooka - Millwood Rd Block 2	10km E of Raywood	TO	To modify the vegetation Abundance across the planned area to assist the Promotion of Ironbark.	LMZ	57.36	N

GREATER BENDIGO CITY	LM-MGF-BGO-0105	Long Gully - Dai Gum San	2.5 km South of Eagl	FRB	To provide the highest level of localised protection to human life, property and community assets identified as highly valued including Adjacenbt Properties .	APZ	11.85	N
GREATER BENDIGO CITY	LM-MGF-BGO-0744	Maiden Gully - Bonazza Tk	2.5km NE of Maiden Gully	FRB	To provide the highest level of localised protection to human life, property and community assets identified as highly valued including Adjoining properties.	APZ	23.37	Y
GREATER BENDIGO CITY	LM-MGF-BGO-0113	Maiden Gully - Hermitage Rd Block 2	Maiden Gully	FRB	To develop fuel reduced areas of sufficient width and continuity to reduce the speed and intensity of bushfires.	NZ	62.5	N
GREATER BENDIGO CITY	LM-MGF-BGO-0108	MYERS FLAT - NERRING TRK	Myers Flat	FRB	To provide bushfire protection by reducing overall fuel hazard and bushfire hazard in the landscape.	LMZ	94.57	N
GREATER BENDIGO CITY	LM-MGF-BGO-0115	Wellsford - Tresize Tk	6.5KM NE OF BENDIGO	FRB	To develop fuel reduced areas of sufficient width and continuity to reduce the speed and intensity of bushfires.	BMZ	569.24	N
GREATER BENDIGO CITY	LM-MGF-BGO-0532	Whipstick - Adelaide Hills Rd	5.5km N of Eaglehawk	TO	To modify the vegetation Abundance across the planned area to assist the Promotion of Ironbark.	BMZ	213.85	N
GREATER BENDIGO CITY	LM-MGF-BGO-0855	Whipstick - Brights Lane	7.4km N of Eaglehawk	TO	To modify the vegetation Abundance across the planned area to assist the Promotion of Ironbark.	BMZ	19.92	N
GREATER BENDIGO CITY	LM-MGF-BGO-0534	Whipstick - Rifle Range Rd	5.5km N of Eaglehawk	TO	To modify the vegetation Abundance across the planned area to assist the Promotion of Ironbark.	LMZ	183.27	N
GREATER BENDIGO CITY	LM-MGF-BGO-0024	Whipstick - Whipstick Rd	3.5km N of Eaglehawk	FRB	To build on protection works in adjacent Asset Protection Zone.	BMZ	135.36	N
GREATER BENDIGO CITY	LM-MGF-BGO-0533	Whipstick - Woodvale East Tk	5.5km N of Eaglehawk	TO	To modify the vegetation Abundance across the planned area to assist the Promotion of Ironbark.	LMZ	194.89	N
GREATER SHEPPARTON CITY	LM-MGF-RUS-0124	Murchison - YYNAC Dr Swamp WR	7.4km SW of Murchison	TO	To modify the vegetation Abundance across the planned area to assist the Promotion of Riverine Woodland.	LMZ	279.03	Y
GREATER SHEPPARTON CITY	LM-MGF-RUS-0125	Murchison - YYNAC Police Paddock	1.4km E of Murchison	TO	To modify the vegetation Abundance across the planned area to assist the Promotion of Grassy / Heathy Dry Forest.	APZ	10.24	Y
HEPBURN SHIRE	LM-MGF-MRY-0225	Merin Merin & Middle Swamp WR - Weathersons Road	5.7km N of Clunes	TO	To modify the vegetation Abundance across the planned area to assist the Promotion of Freshwater Wetland (ephemeral).	LMZ	180.53	Y
LODDON SHIRE	LM-MGF-ING-0200	Kooyoora - Barry Rocks Rd	15.5km SW of Inglewood	TO	To modify the vegetation Abundance across the planned area to assist the Promotion of Inland Plains Woodland.	LMZ	149.6	N
LODDON SHIRE	LM-MGF-ING-0199	Kooyoora - Halls Rd	11km W of Inglewood	TO	To modify the vegetation Abundance across the planned area to assist the Promotion of Inland Plains Woodland.	BMZ	204.86	N

LODDON SHIRE	LM-MGF-ING-0201	Kooyoora - Melville Caves Rd	15.5km SW of Inglewood	TO	To modify the vegetation Abundance across the planned area to assist the Promotion of Inland Plains Woodland.	LMZ	296.22	N
LODDON SHIRE	LM-MGF-ING-0197	Wehla - Grassy Flat Tk	8.5km E of Logan	TO	To modify the vegetation Abundance across the planned area to assist the Promotion of Ironbark.	LMZ	96.64	N
LODDON SHIRE	LM-MGF-ING-0198	Wehla - Rodgers Tk	7km E of Logan	TO	To modify the vegetation Abundance across the planned area to assist the Promotion of Ironbark.	LMZ	125.31	N
MACEDON RANGES SHIRE	LM-MGF-MAC-0047	Barringo - Shannons Rd	5km E of Macedon	ECO	To modify the vegetation Abundance across the planned area to assist the Promotion of Grassy / Heathy Dry Forest.	LMZ	1.74	N
MACEDON RANGES SHIRE	LM-MGF-MAC-0044	Cobaw - Camp Tk	2.5km W of Benloch	FRB	To develop fuel reduced areas of sufficient width and continuity to reduce the speed and intensity of bushfires.	BMZ	158.42	N
MOUNT ALEXANDER SHIRE	LM-MGF-CAS-0260	Castlemaine - Kalimna Park DDW	3.2km NE of Castlemaine	TO	To modify the vegetation Abundance across the planned area to assist the Promotion of Grassy / Heathy Dry Forest.	LMZ	24.22	N
MOUNT ALEXANDER SHIRE	LM-MGF-BGO-0745	Redesdale - Coliban River	6.4km W of Redesdale	TO	To modify the vegetation Abundance across the planned area to assist the Promotion of Alluvial Plains Grassland.	LMZ	7.58	Y
MOUNT ALEXANDER SHIRE	LM-MGF-BGO-0746	Redesdale - Sutton Grange - Redesdale Road	6.0km W of Redesdale	TO	To modify the vegetation Abundance across the planned area to assist the Promotion of Inland Plains Woodland.	LMZ	7.4	Y
MOUNT ALEXANDER SHIRE	LM-MGF-CAS-0246	Taradale - Bones Gully Tk	2km NW of Taradale	FRB	To develop fuel reduced areas of sufficient width and continuity to reduce the speed and intensity of bushfires.	BMZ	114.72	N
MOUNT ALEXANDER SHIRE	LM-MGF-CAS-0415	Walmer - Franklins Tk	4km NW of Castlemaine	FRB	To build on protection works in adjacent Asset Protection Zone.	BMZ	183.43	Y
NORTHERN GRAMPIANS SHIRE	LM-MGF-AVO-0031	Barkly - Kara Kara NP Teddington Rd	9km N of Barkly	TO	To modify the vegetation Abundance across the planned area to assist the Promotion of Ironbark.	LMZ	511.17	N
NORTHERN GRAMPIANS SHIRE	LM-MGF-STA-0050	Dalyenong - Emu Rd	12km West of Bealiba	ECO	To modify the vegetation Composition across the planned area to assist the Promotion of Grassy / Heathy Dry Forest.	LMZ	252.49	N
NORTHERN GRAMPIANS SHIRE	LM-MGF-STA-0043	St Arnaud - Gray St	1.2km SE of St Arnaud	FRB	To develop fuel reduced areas of sufficient width and continuity to reduce the speed and intensity of bushfires.	BMZ	6.31	N
NORTHERN GRAMPIANS SHIRE	LM-MGF-STA-0039	St Arnaud - Rezza Tk	1.8km SW of St Arnaud	FRB	To develop fuel reduced areas of sufficient width and continuity to reduce the speed and intensity of bushfires.	BMZ	40.82	N
NORTHERN GRAMPIANS SHIRE	LM-MGF-STA-0044	St Arnaud - Wellington St	1.2km W of St Arnaud	FRB	To provide the highest level of localised protection to human life, property and community assets identified as highly valued including Township of St Arnaud.	APZ	37.14	N

PYRENEES SHIRE	LM-MGF-AVO-0011	Glenpatrick - Gollop Tk	10.1km W of Avoca	FRB	To develop fuel reduced areas of sufficient width and continuity to reduce the speed and intensity of bushfires.	BMZ	729.68	N
PYRENEES SHIRE	LM-MGF-AVO-0043	Warrenmang - Miles Tk	4.5km SW of Warrenmang	FRB	To provide bushfire protection by reducing overall fuel hazard and bushfire hazard in the landscape.	LMZ	802.89	Y

FFMVic Lead Murray Goldfields District Planned Burns 2023/24

Local Government Area	Burn Number	Burn Name	General Location	Burn Type	Land Management Objective	FMZ	Planned Burn Size (ha)	New Burn
CAMPASPE SHIRE	LM-MGF-COH-0009	Terrick Terrick NP - BBLW Finns Tk	19.6km SE of Pyramid Hill	TO	To modify the vegetation Abundance across the planned area to assist the Promotion of Alluvial Plains Grassland.	LMZ	91.30	Y
CENTRAL GOLDFIELDS SHIRE	LM-MGF-MRY-0070	MARYBOROUGH - TELEGRAPH TK	1.5KM ENE OF MARYBOROUGH TOWNSHIP	FRB	To provide the highest level of localised protection to human life, property and community assets identified as highly valued including Maryborough township.	APZ	139.59	N
CENTRAL GOLDFIELDS SHIRE	LM-MGF-MRY-0147	Talbot - Nuggetty Gully Rd	4.5km SW of Talbot	FRB	To develop fuel reduced areas of sufficient width and continuity to reduce the speed and intensity of bushfires.	BMZ	98.00	N
GANNAWARRA SHIRE	LM-MGF-COH-0042	Teal Point - BLW-McDonald Swamp	3.5km N of Teal Point	TO	To modify the vegetation Abundance across the planned area to assist the Promotion of Treed Swampy Wetland.	LMZ	17.43	N
GANNAWARRA SHIRE	LM-MGF-COH-0097	Wandella NCR - Barapa Wandella NCR	5.4km W of Kerang	TO	To modify the vegetation Abundance across the planned area to assist the Promotion of Grassy / Heathy Dry Forest.	LMZ	862.51	Y
GREATER BENDIGO CITY	LM-MGF-BGO-0743	Axedale - campaspe river	1.9km N of Axedale	TO	To modify the vegetation Abundance across the planned area to assist the Promotion of Alluvial Plains Grassland.	LMZ	2.06	Y
GREATER BENDIGO CITY	LM-MGF-BGO-0459	Big Hill - Tower	2.6km SSE of Big Hill	FRB	To provide the highest level of localised protection to human life, property and community assets identified as highly valued including tower infrastructure.	APZ	0.9	N
GREATER BENDIGO CITY	LM-MGF-BGO-0748	California Gully - Hobson St	1.5km SE of California Gully	FRB	To provide the highest level of localised protection to human life, property and community assets identified as highly valued including Adjoining properites.	APZ	18.06	Y
GREATER BENDIGO CITY	LM-MGF-HTH-0063	Heathcote - Gormans Tk	1.8km NE of Heathcote	FRB	To build on protection works in adjacent Asset Protection Zone.	BMZ	187.69	Y
GREATER BENDIGO CITY	LM-MGF-HTH-0036	Heathcote - Pannells Tk	1.8km E of Heathcote	FRB	To build on protection works in adjacent Asset Protection Zone.	BMZ	96.96	N
GREATER BENDIGO CITY	LM-MGF-BGO-0475	Lockwood - Brigg Rd	2km NW of Lockwood South	FRB	To provide bushfire protection by reducing overall fuel hazard and bushfire hazard in the landscape.	LMZ	115.94	N

GREATER BENDIGO CITY	LM-MGF-BGO-0750	Mandurang - Diamond Hill Rd	3km W of Mandurang	FRB	To develop fuel reduced areas of sufficient width and continuity to reduce the speed and intensity of bushfires.	BMZ	37.98	Y
GREATER BENDIGO CITY	LM-MGF-BGO-0749	Marong - Edwards Rd	5km SE of Marong	FRB	To develop fuel reduced areas of sufficient width and continuity to reduce the speed and intensity of bushfires.	BMZ	168.70	Y
GREATER BENDIGO CITY	LM-MGF-BGO-0757	Sedgwick - Barty Rd	2.3km NE of Sedgwick	FRB	To develop fuel reduced areas of sufficient width and continuity to reduce the speed and intensity of bushfires.	BMZ	143.01	Y
GREATER BENDIGO CITY	LM-MGF-BGO-0469	Strathfieldsaye - Osborne La	2km NW of Strathfieldsaye	FRB	To provide the highest level of localised protection to human life, property and community assets identified as highly valued including the Strathfieldsaye township.	APZ	66.79	N
GREATER BENDIGO CITY	LM-MGF-BGO-0535	Whipstick - Eaglehawk - Neilborough Rd	4.7km NE of Eaglehawk	TO	To modify the vegetation Abundance across the planned area to assist the Promotion of Ironbark.	BMZ	272.85	N
GREATER BENDIGO CITY	LM-MGF-BGO-0536	Whipstick - Whipstick NCR	3.2km NW of Huntly	TO	To modify the vegetation Abundance across the planned area to assist the Promotion of Ironbark.	LMZ	75.90	N
LODDON SHIRE	LM-MGF-ING-0207	Boort - Woolshed Swamp WR	5.6km S of Boort	TO	To modify the vegetation Abundance across the planned area to assist the Promotion of Treed Swampy Wetland.	LMZ	507.36	N
LODDON SHIRE	LM-MGF-ING-0270	Inglewood - Sullivan St	2.4km NW of Inglewood	FRB	To build on protection works in adjacent Asset Protection Zone.	BMZ	57.01	Y
LODDON SHIRE	LM-MGF-ING-0211	Kooyoora - Kirawns Rd	13.8km W of Inglewood	TO	To modify the vegetation Abundance across the planned area to assist the Promotion of Inland Plains Woodland.	LMZ	552.53	N
LODDON SHIRE	LM-MGF-ING-0212	Kooyoora - Wehla-Kingower Rd	16.7km W of Inglewood	TO	To modify the vegetation Abundance across the planned area to assist the Promotion of Inland Plains Woodland.	LMZ	92.46	N
LODDON SHIRE	LM-MGF-COH-0047	Terrick Terrick - Timms Lake	10.7km E of Pyramid Hill	TO	To modify the vegetation Abundance across the planned area to assist the Promotion of Treed Swampy Wetland.	LMZ	21.01	Y
LODDON SHIRE	LM-MGF-COH-0011	Terrick Terrick NP - BBLW Fabians Tk	18km SE of Pyramid Hill	TO	To modify the vegetation Abundance across the planned area to assist the Promotion of Alluvial Plains Grassland.	LMZ	108.02	Y
LODDON SHIRE	LM-MGF-COH-0010	Terrick Terrick NP - BBLW Possums Tk	19km SE of Pyramid Hill	TO	To modify the vegetation Abundance across the planned area to assist the Promotion of Alluvial Plains Grassland.	LMZ	30.73	Y
LODDON SHIRE	LM-MGF-COH-0012	Terrick Terrick NP - BBLW Yarran	19km SE of Pyramid Hill	TO	To modify the vegetation Abundance across the planned area to assist the Promotion of Alluvial Plains Grassland.	LMZ	122.56	Y

LODDON SHIRE	LM-MGF-COH-0004	Terrick Terrick NP - Creek South West	21km S of Leitchville	ECO	To modify the vegetation Abundance across the planned area to assist the Promotion of Alluvial Plains Grassland.	LMZ	44.23	N
LODDON SHIRE	LM-MGF-ING-0210	Wehla - Lunatic Gully Tk	7km E of Logan	TO	To modify the vegetation Abundance across the planned area to assist the Promotion of Ironbark.	LMZ	170.67	N
LODDON SHIRE	LM-MGF-ING-0209	Wehla - White Box Tk	7.3km E of Logan	TO	To modify the vegetation Abundance across the planned area to assist the Promotion of Ironbark.	LMZ	295.67	N
MITCHELL SHIRE	LM-MGF-HTH-0064	Tooborac - Bensons Tk	8.2km NE of Tooborac	FRB	To provide bushfire protection by reducing overall fuel hazard and bushfire hazard in the landscape.	LMZ	19.64	Y
MOUNT ALEXANDER SHIRE	LM-MGF-CAS-0244	Glenluce - Wewak Tk	6.5km S of Fryerstown	FRB	To develop fuel reduced areas of sufficient width and continuity to reduce the speed and intensity of bushfires.	BMZ	470.88	Y
NORTHERN GRAMPIANS SHIRE	LM-MGF-STA-0036	St Arnaud - Fire Break Rd	1.5km NW of St Arnaud	FRB	To build on protection works in adjacent Asset Protection Zone.	BMZ	115.31	N
NORTHERN GRAMPIANS SHIRE	LM-MGF-STA-0045	St Arnaud - Franklin Rd	1km SW of St Arnaud	FRB	To build on protection works in adjacent Asset Protection Zone.	BMZ	30.89	N
NORTHERN GRAMPIANS SHIRE	LM-MGF-STA-0047	St Arnaud - Sand Hills	0.5km E of St Arnaud	FRB	To provide the highest level of localised protection to human life, property and community assets identified as highly valued including the St Arnaud township.	APZ	15.56	N
PYRENEES SHIRE	LM-MGF-AVO-0047	Glenlofty - Morton Tk	2km N of Glenlofty	FRB	To develop fuel reduced areas of sufficient width and continuity to reduce the speed and intensity of bushfires.	BMZ	82.89	Y
PYRENEES SHIRE	LM-MGF-AVO-0048	Glenpatrick - Glengully Tk	3km NE of Glenpatrick	FRB	To provide bushfire protection by reducing overall fuel hazard and bushfire hazard in the landscape.	LMZ	486.26	Y
PYRENEES SHIRE	LM-MGF-AVO-0028	Percydale - Old Bluff Tk	9.5km W of Avoca	FRB	To develop fuel reduced areas of sufficient width and continuity to reduce the speed and intensity of bushfires.	BMZ	418.52	Y
STRATHBOGIE SHIRE	LM-MGF-RUS-0094	Graytown - Quarry Road Mt Black	4.8km E of Graytown	FRB	To provide bushfire protection by reducing overall fuel hazard and bushfire hazard in the landscape.	LMZ	132.05	Y
STRATHBOGIE SHIRE	LM-MGF-HTH-0065	Graytown - Spring Creek Rd	1km S of Graytown	FRB	To provide bushfire protection by reducing overall fuel hazard and bushfire hazard in the landscape.	LMZ	231.24	Y

Appendix (2): CFA Schedules of Activities

These schedules contain the details of CFA-led planned burning activities. Please note that the planned burn year and season identified for each planned burn is indicative only and may be changed due to weather conditions and operational requirements.

The following abbreviations may be used: '*' asterisk on burn name denotes a cross-tenure burn; COM - Committee of Management; PP – Private Property; FRB – Fuel Reduction Burn; ECO - Ecological burn; TO – Traditional Owner.

SCHEDULE 1: CFA LEAD DISTRICT 02 – PLANNED BURNING

CFA Lead District 02 Planned Burns 2021/22

Local Government Area	Burn Number	Burn Name	Burn Type	Land Management Objective	Planned Burn Size (ha)	New Burn
City of Greater Bendigo	D02-20-018	Elmore – North of Township Railway Line	FRB	To provide the highest level of localised protection to human life, property and community assets identified as highly valued including the Elmore township and surrounding farmland.	25.64	N
City of Greater Bendigo	D02-19-003	Marong – Powers Rd	ECO	To modify the vegetation Abundance across the planned area to assist the Promotion of Spiny Rice Flower (<i>Pimelea spinescens</i>).	1.1	N
Macedon Ranges	D02-21-014	Kyneton – South Sebastopol Rd	FRB	To develop fuel reduced areas of sufficient width and continuity to reduce the speed and intensity of bushfires.	0.85	Y
Macedon Ranges	D02-21-016	Lancefield – Salisbury Lane	FRB	To develop fuel reduced areas of sufficient width and continuity to reduce the speed and intensity of bushfires.	4.45	Y
Macedon Ranges	D02-21-010	Riddells Creek – Kilmore Rd – From Hamilton Rd to Sunbury Rd Sth Side	FRB	To develop fuel reduced areas of sufficient width and continuity to reduce the speed and intensity of bushfires.	4.71	Y
Macedon Ranges	D02-19-020	Riddells Creek – Markham Road	FRB	To provide the highest level of localised protection to human life, property and community assets identified as highly valued including Railway Line and Main Road.	9.02	N
Macedon Ranges	D02-19-018	Riddells Creek – Websters Road	FRB	To provide the highest level of localised protection to human life, property and community assets identified as highly valued including Railway track and Websters Road.	2.1	N
Mount Alexander	D02-21-007	Baringhup – Green Lane-Baringhup W Rd	ECO	To modify the vegetation Abundance across the planned area to assist the Promotion of <i>P. Spinescens</i> .	2.59	N
Mount Alexander	D02-19-006	Guildford – Meins Lane	ECO	To modify the vegetation Composition across the planned area to assist the Promotion of Alluvial Plains Grassland.	0.57	N
Mount Alexander	D02-17-009	Newstead – Levee Bank	FRB	To provide the highest level of localised protection to human life, property and community assets identified as highly valued including Newstead township.	1.27	N

CFA Lead District 02 Planned Burns 2022/23

Local Government Area	Burn Number	Burn Name	Burn Type	Land Management Objective	Planned Burn Size (ha)	New Burn
Central Goldfields Shire	D02-20-001	Talbot – Trotting Track	FBR	To modify the vegetation Composition across the planned area to assist the Promotion of Alluvial Plains Grassland.	4.3	N
City of Greater Bendigo	D02-21-005	Redesdale – North Redesdale Rd	FRB	To develop fuel reduced areas of sufficient width and continuity to reduce the speed and intensity of bushfires.	0.43	N
City of Greater Bendigo	D02-18-009	Huntly – Huntly Training Campus	FRB	To provide the highest level of localised protection to human life, property and community assets identified as highly valued including CFA Huntly Training Campus.	11.85	N
City of Greater Bendigo	D02-21-009	White Hills – Knight St	TO	To modify the vegetation Composition across the planned area to assist the Control of Grassy / Heathy Dry Forest.	1.39	N
City of Greater Bendigo	D02-20-006	White Hills Koomba St	TO	To modify the vegetation Composition across the planned area to assist the Control of Grassy / Heathy Dry Forest.	1.27	N
City of Greater Bendigo	D02-21-017	Goornong Cemetery	FRB	To provide the highest level of localised protection to human life, property and community assets identified as highly valued including Goornong Cemetery.	1.62	Y
Macedon Ranges	D02-21-015	Darraweit Guim – Fairfield Lane	FRB	To develop fuel reduced areas of sufficient width and continuity to reduce the speed and intensity of bushfires.	1.1	Y
Macedon Ranges	D02-21-013	New Gisborne – Racecourse Marshland Reserve	FRB	To develop fuel reduced areas of sufficient width and continuity to reduce the speed and intensity of bushfires.	2.44	Y
Macedon Ranges	D02-21-008	Riddells Creek – Kilmore Road Gyro Cl to Mt Eliza Rd	FRB	To develop fuel reduced areas of sufficient width and continuity to reduce the speed and intensity of bushfires.	21.16	Y
Macedon Ranges	D02-21-012	Riddells Creek – Sutherlands Rd	FRB	To develop fuel reduced areas of sufficient width and continuity to reduce the speed and intensity of bushfires.	2.04	Y
Mount Alexander	D02-19-009	Baringhup West – Back Eddington Rd	ECO	To modify the vegetation Abundance across the planned area to assist the Promotion of Pimelea spinescens (Spiny Rice-flower).	0.33	N

CFA Lead District 02 Planned Burns 2023/24

Local Government Area	Burn Number	Burn Name	Burn Type	Land Management Objective	Planned Burn Size (ha)	New Burn
Macedon Ranges	D02-21-006	Riddells Creek – Kilmore Road Western end Between Campbell Rd and Hamilton Rd	FRB	To develop fuel reduced areas of sufficient width and continuity to reduce the speed and intensity of bushfires.	3.56	Y
Mount Alexander	D02-21-006	Guildford – Midland Hwy – Railway Bridge	FRB	To provide the highest level of localised protection to human life, property and community assets identified as highly valued including Guildford township.	1.07	N
Mount Alexander	D02-20-023	Yapeen – Muckleford-Yapeen Rd	ECO	To modify the vegetation Abundance across the planned area to assist the Promotion of Pimelea spinescens (Spiny Rice-flower).	0.65	N

SCHEDULE 2: CFA LEAD DISTRICT 18 – PLANNED BURNING

CFA Lead District 18 Planned Burns 2021/22

Local Government Area	Burn Number	Burn Name	Burn Type	Land Management Objective	Planned Burn Size (ha)	New Burn
Buloke	D18-21-003	Donald – Mcnamaras Rd	FRB	To develop fuel reduced areas of sufficient width and continuity to reduce the speed and intensity of bushfires.	18.08	Y
Buloke	D18-21-004	Donald – Single Tree Rd – Block C	FRB	To develop fuel reduced areas of sufficient width and continuity to reduce the speed and intensity of bushfires.	10.68	N
Buloke	D18-21-002	Watchem – Warracknabeal Rd	FRB	To provide the highest level of localised protection to human life, property and community assets identified as highly valued including Watchem township.	1.4	Y
Swan Hill	D18-21-001	Manangatang – Township	FRB	To provide the highest level of localised protection to human life, property and community assets identified as highly valued including Manangatang township.	1.31	Y
Mildura Rural City	D18-21-009	Walpeup – Mallee Hwy	FRB	To provide the highest level of localised protection to human life, property and community assets identified as highly valued including Walpeup township, railway and Walpeup silos.	2.5	Y
Mildura Rural City	D18-21-010	Walpeup – Meridian Access Rd	FRB	To provide the highest level of localised protection to human life, property and community assets identified as highly valued including Walpeup township and rail line.	0.6	Y

CFA Lead District 18 Planned Burns 2022/23

Local Government Area	Burn Number	Burn Name	Burn Type	Land Management Objective	Planned Burn Size (ha)	New Burn
Buloke	D18-22-001	Buckrabanyule – Mount Buckra	TO	To modify the vegetation Abundance across the planned area to assist the Promotion of Grassy / Heathy Dry Forest.	634.12	Y
Buloke	D18-21-006	Watchem – Single Tree Rd – Block E	FRB	To develop fuel reduced areas of sufficient width and continuity to reduce the speed and intensity of bushfires.	4.14	N
Buloke	D18-21-007	Watchem – Single Tree Rd – Block G	FRB	To develop fuel reduced areas of sufficient width and continuity to reduce the speed and intensity of bushfires.	18.12	N

CFA Lead District 18 Planned Burns 2023/24

Local Government Area	Burn Number	Burn Name	Burn Type	Land Management Objective	Planned Burn Size (ha)	New Burn
Buloke	D18-21-005	Watchem – Single Tree Rd – Block D	FRB	To provide bushfire protection by reducing overall fuel hazard and bushfire hazard in the landscape.	9.03	N
Buloke	D18-21-008	Watchem – Single Tree Rd – Block I	FRB	To provide bushfire protection by reducing overall fuel hazard and bushfire hazard in the landscape.	7.36	N

SCHEDULE 3: CFA LEAD DISTRICT 20 – PLANNED BURNING

CFA Lead District 20 Planned Burns 2021/22

Local Government Area	Burn Number	Burn Name	Burn Type	Land Management Objective	Planned Burn Size (ha)	New Burn
Campaspe	D20-21-005	Echuca – Anderson St	FRB	To provide the highest level of localised protection to human life, property and community assets identified as highly valued including Bendigo-Echuca rail line and Echuca township.	14.49	Y
Campaspe	D20-20-018	Stanhope – Carag Rd	FRB	To provide bushfire protection by reducing overall fuel hazard and bushfire hazard in the landscape.	38.4	N
Campaspe	D20-21-004	Koyuga – Recreation Reserve	FRB	To provide the highest level of localised protection to human life, property and community assets identified as highly valued including Koyuga Hall and Recreation Reserve.	0.52	N

Campaspe	D20-21-006	Rushworth – Harrimans Rd	FRB	To provide the highest level of localised protection to human life, property and community assets identified as highly valued including adjacent residents.	16.01	Y
Campaspe	D20-19-001	Tennyson – Crossman Rd	ECO	To modify the vegetation Abundance across the planned area to assist the Promotion of Pimelea spinescens.	1.3	N
Campaspe	D20-18-006	Tennyson – Jasper Rd	ECO	To modify the vegetation Abundance across the planned area to assist the Promotion of Pimelea spinescens.	1.4	N
Gannawarra	D20-20-001	Appin South – Loddon Highway	FRB	To provide bushfire protection by reducing overall fuel hazard and bushfire hazard in the landscape.	17.76	N
Loddon	D20-21-003	Jarklin – Loddon Valley Hwy	FRB	To provide the highest level of localised protection to human life, property and community assets identified as highly valued including Jarklin Public Hall.	2.54	N

CFA Lead District 20 Planned Burns 2022/23

Local Government Area	Burn Number	Burn Name	Burn Type	Land Management Objective	Planned Burn Size (ha)	New Burn
Campaspe	D20-20-010	Kanyapella – Kanyapella Wetlands	TO	To modify the vegetation Abundance across the planned area to assist the Control of Cumbungi and open up water drainage lines.	1.27	N
Campaspe	D20-20-006	Stanhope – Two Tree Rd	FRB	To provide bushfire protection by reducing overall fuel hazard and bushfire hazard in the landscape.	30.68	N
Loddon	D20-20-014	Bridgewater – Bridgewater-Serpentine Rd	FRB	To provide bushfire protection by reducing overall fuel hazard and bushfire hazard in the landscape.	90.76	N
Loddon	D20-21-014	Bridgewater – Calder Hwy	FRB	To provide bushfire protection by reducing overall fuel hazard and bushfire hazard in the landscape.	19.41	Y
Loddon	D20-20-015	Prairie – Dingee-Mitiamo Railway	FRB	To develop fuel reduced areas of sufficient width and continuity to reduce the speed and intensity of bushfires.	360.84	N
Loddon	D20-21-009	Korong Vale – Boort-Kurting Rd	TO	To modify the vegetation Abundance across the planned area to assist the Promotion of Grassy / Heathy Dry Forest.	224.85	Y
Loddon	D20-21-012	Skinner's Flat – Mount Kerang	TO	To modify the vegetation Abundance across the planned area to assist the Promotion of Grassy / Heathy Dry Forest.	1016.64	Y
Loddon	D20-21-008	Wedderburn Junction – Fabry Lane	TO	To modify the vegetation Abundance across the planned area to assist the Promotion of Grassy / Heathy Dry Forest.	138.53	Y
Loddon	D20-21-010	Wychitella – Wychitella-Borong Rd	TO	To modify the vegetation Abundance across the planned area to assist the Promotion of Grassy / Heathy Dry Forest.	197.41	Y
Loddon	D20-21-001	Wychitella – Korong Vale-Wychitella Rd	TO	To modify the vegetation Abundance across the planned area to assist the Promotion of Grassy / Heathy Dry Forest.	348.67	Y

CFA Lead District 20 Planned Burns 2023/24

Local Government Area	Burn Number	Burn Name	Burn Type	Land Management Objective	Planned Burn Size (ha)	New Burn
Loddon	D20-21-001	Dingee – Hands Rd	ECO	To modify the vegetation Abundance across the planned area to assist the Promotion of Pimelea spinescens.	8.93	N
Loddon	D20-20-011	Prairie – Tonkins Rd	ECO	To modify the vegetation Abundance across the planned area to assist the Promotion of Pimelea spinescens.	7.6	N

Glossary

This glossary provides information on terms contained within the body of this document and the schedules.

BREA - Bushfire Risk Engagement Areas.

Burn Type – indicates the primary purpose of the burn.

Burn Number and Name – the unique identifier for each burn or planned fuel management activity.

Cross-tenure burn – a burn that covers both public and private land

Fire Management Zone (FMZ) – an area of public land in which fire is managed for specific asset, fuel and ECO objectives. Values included in this column can be APZ - Asset Protection Zone; BMZ – Bushfire Moderation Zone; LMZ - Landscape Management Zone, PBEZ – Planned Burn Exclusion Zone; or, NZ -Not Zoned.

Forest Fire Management Victoria (FFMVic) – FFMVic consists of specialist staff from DELWP, Parks Victoria, Melbourne Water and VicForests.

Land Management Objective - identifies the desired land management outcome(s) of the burn.

Lead Agency - The Lead Agency for a planned burn is determined by the burns distance from public land. Within 1.5 km of public land, planned burning on non-public land falls within DELWP’s legislative scope and DELWP can choose to be the Lead Agency. If it is outside 1.5 km of public land, DELWP is unable to undertake the planned burn; instead, the CFA will be the Lead Agency to undertake that burn.

Local Government Area (LGA) – the municipality in which most of the fuel management activity is located.

Location – a direction and distance of the planned burn from the nearest major township/locality.

Planned Burns - Planned burning is one of FFMVic and CFA’s most important fire prevention activities. It involves the controlled application of fire during periods of lower fire risk, to achieve one of three main purposes: fuel reduction (FRB), ecological (ECO) management and forest regeneration (REG).

It is important to understand that planned burning operations do not stop or eliminate the risk of bushfires. However, Victorian research, and similar information from other parts of Australia and overseas, clearly shows that firefighters have a much better chance of managing bushfires in areas where planned burns have been carried out.

Approved burns in this year’s Plan will require a range of preparation works to make the planned area ready to ignite when the weather and other conditions are right. Preparation works may include, brushing up or grading of existing boundaries and internal tracks, management of hazardous trees, the construction and preparation of boundary and control lines with machinery and pest plant controls. The preparation works will have on-site inspections which will assess the surrounding assets and planned burn objectives.

Private Property Burn – burn that occurs wholly on private land.

Planned Burn Size – the maximum area of the fuel management activity measured in hectares (ha), including areas specifically excluded from disturbance.

Residual Risk - The impacts on life and property that remain after planned burning and bushfires, we call the 'residual risk'. If residual risk is 100 per cent – there has been no fire in the landscape and no fuel reduced and we are at maximum risk where fires will spread and impact. If residual risk is at 70 per cent – the impacts to life and property will be reduced by about a third.

Strategic Fuelbreak: A strategic fuelbreak is a strip of land where vegetation has been modified to reduce the amount of fuel available to burn during a bushfire.

New Burn – ‘NEW’ = New burn did not appear on last year’s JFMP. *Blank box* = Not a new burn. Burn was approved in the previous JFMP but has not been carried out, it is included in this JFMP and may be conducted at any time.

Non-Burning Fuel Treatments – Non-burning fuel treatments such as the maintenance and construction of fire control lines, fire access tracks, fuel breaks, fire infrastructure and other fuel management activities are required to support the planned burning program. Treatments to achieve these works can include slashing, pruning, chemical application (in alignment with safety standards), grazing or other operations (such as ploughing, mulching or rolling) that may be more appropriate or practical in certain areas. For example, fuel on small areas or blocks located within townships may be treated mechanically, where burning is impractical. These methods may also be more suitable in certain vegetation types.

