

## FFMVic Loddon Mallee / CFA North West Regions

### Our 2022/23 planned burning program

All Data provided in this product relates to 2022/23 financial year only.



FFMVic  
**19,029ha**

CFA  
**247ha**

### Bushfire Risk

Reduced to **72%** by end **June 2023**

Our statewide target is at or below **70%**

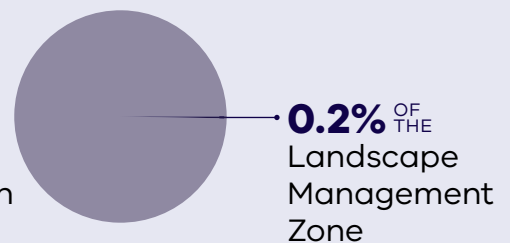
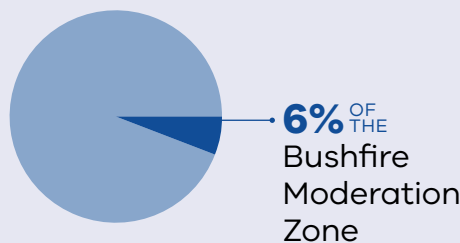
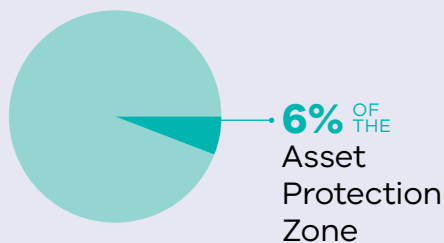


Bushfire risk is **growing 3%** per year over the next 3 years

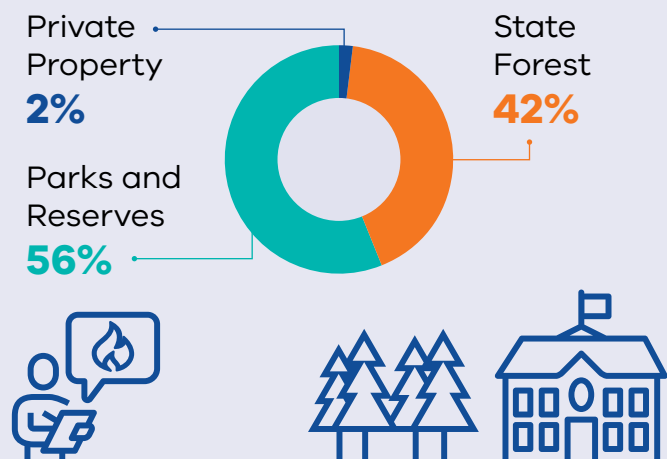


JFMP aims to **reduce bushfire risk and promote good land management** through implementing our bushfire management strategies.

### Planned for treatment

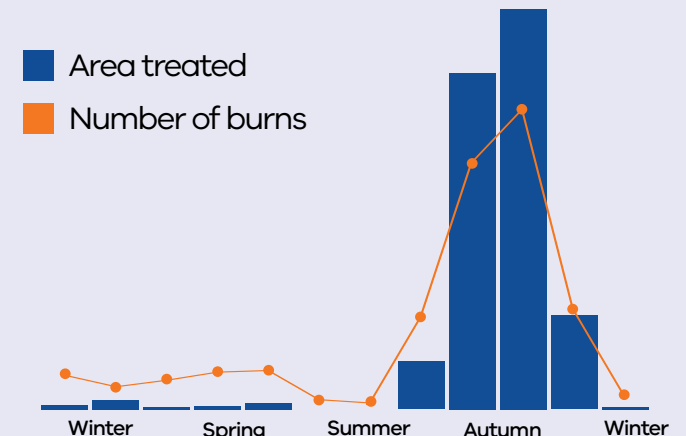


Bushfire risk doesn't follow land boundaries, so the JFMP includes both public and private land.



We look for planned burning opportunities all year round when it is safe to do so.

Number and area of planned burns treated statewide each month:



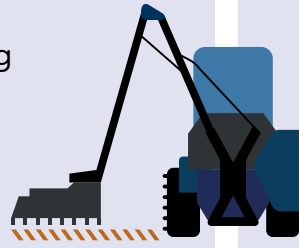
## Other treatments to reduce bushfire



Mulching  
**2,851ha**

Slashing/Mowing  
**2,797ha**

Other  
**1,521ha**



## Strategic Fuelbreak construction\*

**13.2km** of Asset Protection Break

**4.6km** of Landscape Protection Break

Subject to planning and approvals framework.



## Understanding the effects of fire



### Monitoring, Evaluation and Reporting projects:

Changes in Overall Fuel Hazard, Eltham Copper Butterfly habitat fire responses. Big Desert and Wyperfeld terrestrial fauna fire response to build models to inform planning.

### We engage with communities and stakeholders:

Mallee Fire Advisory Committee, Murray Goldfields JFMP Planning Committee, Apiarists and wine-growers and Castlemaine Emergency Expo 2022

### Community-based Bushfire Management locations:

Communities under review.

## Cultural burning



We work with Traditional Owners to support Cultural burns on Country. Barapa Barapa, Dja Dja Wurrung, Tati Tati, Yorta Yorta and Wurundjeri Woi Wurrung.

**2,898ha**

44 burns over 2022/23



# Reducing bushfire risk with fuel management

State

**62% | 61%**

Loddon Mallee/  
North West

**68% | 72%**

Grampians/  
West

**75% | 70%**

Barwon South West/  
South West

**58% | 55%**

Hume/North East

**67% | 69%**

Gippsland/  
South East

**43% | 45%**

Greater Melbourne

**84% | 84%**

- Current risk (06/22)
- Projected risk (06/23)
- DELWP region
- CFA region

