

Joint Fuel Management Program 2021/22 – 2023/2024

Grampians FFMVic Region
West CFA Region



**FOREST FIRE
MANAGEMENT VICTORIA**

Photo: Front cover - Kidds Gully Planned Burn, Hepburn Springs, 24 February 2021 (credit Mark Lee) – taken from Westwood Street, Daylesford with Hepburn House Age Care left in photo.

© The State of Victoria Department of Environment, Land, Water and Planning 2021



This work is licensed under a Creative Commons Attribution 4.0 International licence. You are free to re-use the work under that licence, on the condition that you credit the State of Victoria as author. The licence does not apply to any images, photographs or branding, including the Victorian Coat of Arms, the Victorian

Government logo and the Department of Environment, Land, Water and Planning (DELWP) logo. To view a copy of this licence, visit <http://creativecommons.org/licenses/by/4.0/>

ISBN 978-1-76105-752-6 (pdf/online/MS word)

Disclaimer

This publication may be of assistance to you, but the State of Victoria and its employees do not guarantee that the publication is without flaw of any kind or is wholly appropriate for your particular purposes and therefore disclaims all liability for any error, loss or other consequence which may arise from you relying on any information in this publication.

Accessibility

If you would like to receive this publication in an alternative format, please telephone the DELWP Customer Service Centre on 136186, email customer.service@delwp.vic.gov.au or via the National Relay Service on 133 677 www.relayservice.com.au. This document is also available on the internet at www.delwp.vic.gov.au.

Contents

Foreword	4
Joint Fuel Management Program	5
Our Objectives	6
Residual Risk	6
2021/22 – 2023/24 Joint Fuel Management Program	7
Planned burns	7
Non-burning fuel treatments	8
Strategic Fuel Breaks	9
Cultural Burning	10
Endorsement	11
Approval	11
How to become involved in the development of the Joint Fuel Management Program	11
Appendix (1): FFMVic Schedules of Activities	12
SCHEDULE 1: FFMVic LEAD MIDLANDS DISTRICT – PLANNED BURNING	12
SCHEDULE 1: FFMVic LEAD WIMMERA DISTRICT – PLANNED BURNING	20
SCHEDULE 2: FFMVic LEAD MIDLANDS DISTRICT – MULCHING	29
SCHEDULE 2: FFMVic LEAD WIMMERA DISTRICT – MULCHING	31
Appendix (2): CFA Schedules of Activities	32
SCHEDULE 1: CFA LEAD DISTRICT D15 – PLANNED BURNING	32
SCHEDULE 1: CFA LEAD DISTRICT D16 – PLANNED BURNING	36
SCHEDULE 1: CFA LEAD DISTRICT D17 – PLANNED BURNING	41
SCHEDULE 2: CFA LEAD DISTRICT 15 – NON-BURNING FUEL TREATMENTS	45
Glossary	46

Foreword

Working together, Forest Fire Management Victoria (FFMVic*) and the Country Fire Authority (CFA) have developed this Joint Fuel Management Program (JFMP) which covers the Grampians FFMVic Region and West CFA Region. It demonstrates our commitment to working more closely together to deliver the best bushfire risk reduction outcomes for Victorians.

The Joint Fuel Management Program is planned to achieve an integrated and risk-focused fuel management program across public and private land. It is designed to implement long-term bushfire management strategies that outline how the risk of bushfires is managed for the protection of life and property on public and private land, while maintaining and improving natural ecosystems.

In response to the devastating 2019/20 Black Summer bushfires and subsequent inquiries, the Victorian Government has committed to new programs which complement our current fuel management program and aim to reduce bushfire risk across all land tenure.

Strengthening and expanding Victoria's network of Strategic Fuel Breaks is one of the key actions designed to reduce the risk and impacts of more frequent, intense and damaging bushfires under a changing climate.

Investment will also be made on fuel management, targeting long grass and other flammable undergrowth, particularly along our major road and rail corridors. We will work together with Local Government Authorities and water, road and rail authorities to ensure that our works are complementary.

The following program has also been shaped by a variety of research and local information, such as specialist input from FFMVic, CFA staff and volunteers and key industries, as well as knowledge from local communities, including Traditional Owners and key stakeholders. We would like to recognise the work that has been put into developing this Joint Fuel Management Program, by FFMVic, CFA and the local communities.

We encourage your continued input to ensure our plans protect those assets and values which are important to all Victorians.

Tony English
Deputy Chief Fire Officer
DELWP Grampians Region

Michael Boatman
Deputy Chief Officer – Service Delivery
CFA West Region

* Forest Fire Management Victoria (FFMVic) – is the organisation that delivers services to achieve DELWP's legislated responsibilities. It consists of specialist staff from DELWP, Parks Victoria, Melbourne Water and VicForests.

Joint Fuel Management Program

This Joint Fuel Management Program (JFMP) lists fuel management activities in the Grampians DELWP Region and the West CFA Region only.

It covers Midlands and Wimmera DELWP Districts and CFA Districts 15, 16 and 17 (Map 1).

The schedules contained within this document set out where and when activities are planned to occur for the period from 2021/22 to 2023/24. The planned activities are listed by Lead Agency.

To view all fuel management works in your area, the statewide Joint Fuel Management Program map can be viewed at <http://www.ffm.vic.gov.au/jfmp>.

This document contains details about the following planned activities:

Planned Burns - fuel reduction, ecological and other planned burns by indicative year for the three-year period.

Non-Burning Fuel Treatments - the program of works that uses methods other than burning to achieve fuel management objectives.

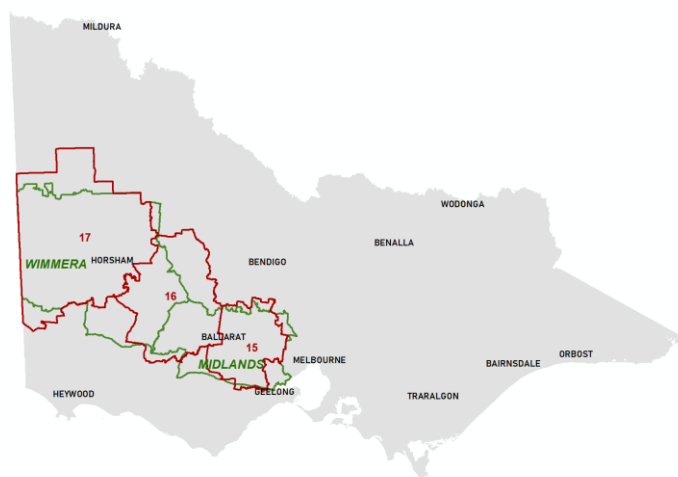
Strategic Fuel Breaks - a strip of land where vegetation has been permanently modified to reduce the rate of spread and intensity of fire for the direct protection of assets and/or assist fire control. They can also assist in the safe delivery of planned burns.

Fire season preparation works – works done prior to the fire season, to ensure infrastructure used in fire detection and suppression are ready for use.

Cultural burning – planned burns led by Traditional Owners on their Country using fire for a number of purposes.

It is important to note that the ability to carry out planned activities is dependent on seasonal and local weather conditions. To allow for this, planned burns from the second and third years of the program may be brought forward to the current year to replace a burn planned for the first year.

Map 1: DELWP and CFA Districts included on this Joint Fuel Management Program



The JFMP is prepared and will be implemented in accordance with Safer Together: A new approach to reducing the risk of bushfire in Victoria, the Code of Practice for Bushfire Management on Public Land 2012 the Regional Bushfire Management Strategy and relevant CFA and FFMVic Instructions, Manuals and Guidelines.

Burns on public land associated with logging regeneration as well as small heap burns are not included in the JFMP as they are approved as part of separate planning processes.

Our Objectives

This JFMP has been developed to implement strategies set out in the Grampians Bushfire Management Strategy (BMS), which has been developed by FFMVic and CFA in consultation with agencies, stakeholders and the community.

The BMS establishes a cross-tenure fuel management strategy to address the bushfire risk across public and private land. It:

- sets clear objectives and associated performance measures for fire management at a regional scale;
- identifies where important values and assets are located across the landscape; and
- includes regional trends in population, industry, and environmental change.

The BMS defines fire management zones on public land that focus appropriate fire management activities to reduce bushfire risk for identified values and promote ecological resilience over the life of the strategy (30-40 years).

Importantly, it identifies Bushfire Risk Engagement Areas (BREA) across public and private land. These areas are intended to support agencies to engage with private landholders about fuel management where it will provide effective bushfire risk reduction.

You can explore what is in our Bushfire Management Strategy [here](#).

Residual Risk

The Grampians Bushfire Management Strategy contributes to achieving the Victorian Government Statewide risk reduction objective, which commits to maintaining bushfire risk at or below a residual risk of 70% in the long-term.

Residual risk is the risk, on average, that bushfires will impact on life and property across the landscape. It is expressed as the percentage of the risk that remains after bushfire history and fuel management (mainly planned burning) activities are considered. It is reported on an annual basis.

Each District works towards managing the local bushfire risk through identifying planned burns and other fuel management works, which collectively will meet the Statewide risk reduction target.

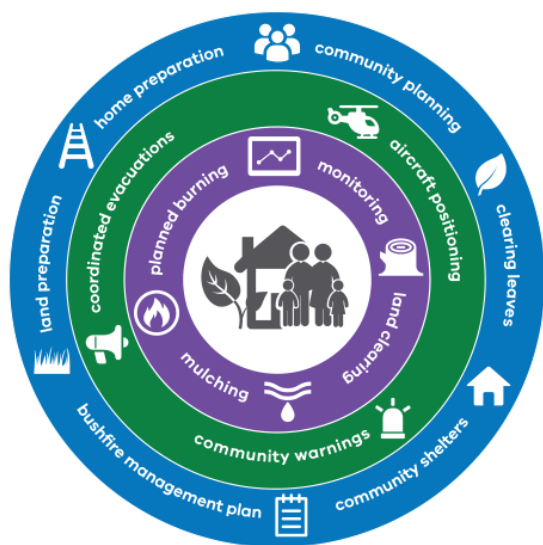
This JFMP aims to meet or exceed the regional residual risk targets and to enable the delivery of bushfire management strategies other than residual risk. It provides flexibility to account for different seasonal conditions.

Table 1: Changes to Residual Risk through implementation of the JFMP

Residual risk categories	Midlands District	Wimmera District	Grampians Region
Residual Risk Target	70	70	70
Current Residual Risk % (30 June 2021)	77	44	75
Projected Residual Risk % by 2022 with implementation of JFMP	67	37	65
Projected Residual Risk % by 2024 with implementation of JFMP	62	39	60
Projected Residual Risk % by 2024 without implementation of JFMP	83	56	81

2021/22 – 2023/24 Joint Fuel Management Program

Planned burning and other fuel management works on this JFMP have been designed to:



- Reduce or maintain residual risk,
- Reduce the size and intensity of bushfire in the landscape to reduce the risk to ecosystems, communities and industries,
- Introduce fire into recently burnt landscapes to prevent continuous fuel build up,
- Use landscape burning techniques along with other strategies to achieve the above, and
- Enhance the use of non-burning fuel treatments to reduce bushfire risk.

Planned burns may be managed differently across different areas to achieve bushfire risk reduction. In areas close to towns or other assets, **asset protection burns** are more frequent and higher coverage to protect people and the things they value. These burns make a significant

contribution to our residual risk reduction.

Landscape burning can be used to reduce the spread of bushfires, aiming to reduce the size and intensity of major bushfires in the landscape. Generally, these landscape burns are of larger scale and low coverage. They may be carried out over multiple years and can be unbounded, relying on fuel and moisture differentials for containment.

While **Strategic fuel breaks** are approved via a different process, they are included in the JFMP to demonstrate our integrated approach to managing bushfire risk.

Planned burns

The following is a summary of the area and number of planned burns in all Districts over the next three years to achieve BMS objectives. As previously mentioned, these planned burns may have fuel reduction or ecological objectives. Details for individual burns are included in Appendices 1 and 2. Any planned burns which have been added to the JFMP for the first time are indicated as being 'New' in the detailed description.

Table 2: Planned burning for 2021/22 – 2023/2024

Agency / District	2021/2022		2022/2023		2023/2024	
	Area (ha)	No. of Burns	Area (ha)	No. of Burns	Area (ha)	No. of Burns
CFA						
District 15						
ECOLOGICAL	1.5	1	0	0	0	0
FUEL REDUCTION	544	55	25	2	0.1	1
District 16						
FUEL REDUCTION	1,064	54	490	13	-	1
District 17						
FUEL REDUCTION	736	54	15	8	0	0

FFMVic					
MIDLANDS					
ECOLOGICAL	707	2	793	3	1,570 2
FUEL REDUCTION	6,046	57	4,607	26	3,774 22
WIMMERA					
ECOLOGICAL	3,648	5	1,195	2	4,452 1
FUEL REDUCTION	18,451	34	37,141	38	34,100 24

Non-burning fuel treatments

Non-burning fuel treatment can include mulching, slashing or other operations which do not involve planned burning to reduce fuel loads. The work is an important contributor to reducing bushfire risk to communities as non-burning treatments may be more appropriate or practical in certain areas. For example, fuel on small areas located within or close to townships may be slashed or mulched, where burning is impractical. These methods may also be more suitable in certain vegetation types.

Some of these fuel treatments are annual, with others prioritised based on the seasonal conditions and scheduling of specific planned burns. The actual treatment area will be dependent on the condition of the fuels at the time of assessment.

Table 3: Non-burning fuel treatments for 2021/22 – 2023/2024

	2021/2022		2022/2023		2023/2024	
Agency / District	Area (ha)	No. of Blocks	Area (ha)	No. of Blocks	Area (ha)	No. of Blocks
CFA						
District 15						
MULCHING	46	12	-	-	-	-
FFMVic						
MIDLANDS						
MULCHING	223	20	-	-	-	-
SLASHING / MOWING	734	184	-	-	-	-
SPRAYING	180	18				
WIMMERA						
MULCHING	321	14	-	-	-	-
SLASHING / MOWING	2,957	133				

Strategic Fuel Breaks

Strengthening and expanding Victoria's network of Strategic Fuel Breaks is one of the key actions that form DELWP's Advanced Forest and Fire Management strategy, designed to reduce the risk and impacts of more frequent, intense and damaging bushfires under a changing climate.

Fuel breaks are critical to protecting communities, catchments and the environment from devastation by bushfire. They do this by making it easier, faster and safer for firefighters to suppress fires. As a last resort, they can also assist in reducing the intensity of direct fire on houses and other buildings.

The Strategic Fuel Break program is utilising two types of protection breaks in their work:

Landscape protection breaks (LPB): Located in the forest to divide the landscape into units/areas suitable to help to reduce the fire to the smallest size possible. These breaks provide a platform for fighting fires in the forest and may also reduce fire impacts on nearby communities.

Asset protection breaks (APB): Designed to provide direct protections of communities and assets from the direct impacts of fire. These breaks are generally located adjacent to townships and assets.

Strategic fuel breaks are approved by a separate process and are displayed on the JFMP for information only.

The following strategic fuel breaks are proposed for construction (new) or renewal (upgrading of an existing break to meet current standards) during 2021/22 (Table 4). These are high priority Strategic Fuel Breaks that are planned to be constructed this year.

Table 4: Proposed strategic fuel breaks for 2021/22

SFB Name	Treatment Number	SFB Type	Work Status	Distance (km)	Width (m)
Linton - Linton Reservoir	GR-MID-BAL-0412	APB	New	3.5	40
Smythesdale - Victoria Rd	GR-MID-BAL-0409	APB	New	3.2	40
Newtown - Italian Gully Rd	GR-MID-BAL-0411	APB	New	3.7	40
Ararat - Main Divide Rd	GR-WIM-HGP-0088	APB	New	3.2	40
Grampians NP - Smiths Rd	GR-WIM-HGP-0089	APB	Renewal	4.2	40
North Blackwood - Firth Rd	GR-MID-DAY-0290	LPB	New	15.9	20
Steiglitz -Geelong-Ballan Rd / Butchers Rd	GR-MID-BMA-0082	LPB	New	8.9	20
Enfield - Incolts Rd	GR-MID-BAL-0410	LPB	New	14.8	20

Currently, the Strategic Fuel Break program is only funded for 2021/22. However, initial planning has commenced to identify the overall Strategic Fuel Break network should further funding be available in future years. Additional high priority strategic fuel breaks have been identified as potential candidate breaks for construction in future years if funding allows, or as contingency fuel breaks should a proposed 2021/22 strategic fuel break not be able to be constructed (Table 5).

Table 5: Potential candidate strategic fuel breaks

SFB Name	Treatment Number	SFB Type	Work Status	Distance (km)	Width (m)
Linton – Nuggety Gully, Lovers Lane	GR-MID-BAL-0414	APB	New	4.1	40
Daylesford – Sailors Falls SFB	GR-MID-DAY-0292	APB	New	3.8	40
Grampians NP – Smiths Rd Stage 2	GR-WIM-HGP-0090	APB	New	3.8	40

Cultural Burning

Cultural fire is fire deliberately put into the landscape authorised and lead by the Traditional Owners of that Country for a variety of purposes, including ceremony, protection of cultural and natural assets, fuel reduction, regeneration and management of food, fibre and medicines, flora regeneration, fauna habitat protection and healing Country's spirit.

We are guided by the Victorian Traditional Owner Cultural Fire Strategy which provides policy direction and a framework for fire and land management agencies to better enable Traditional Owners to undertake cultural burning for these cultural objectives.

There are six principles underpinning this strategy:

- cultural burning is right fire, right time, right way and for the right (cultural reasons), according to lore;
- burning is a cultural responsibility;
- cultural fire is living knowledge;
- monitoring, evaluation and research support cultural fire objectives and enable adaptive learning;
- Country is managed holistically; and
- cultural fire is healing.

The Strategy was authored by Victorian Traditional Owners with the support of a partnership between the Federation of Victorian Traditional Owner Corporations, DELWP, Parks Victoria and the CFA.

FFMVic and CFA recognises that cultural burning can assist landholders and communities in the use of fire to care for Country. The sharing of knowledge by our local Traditional Owners as well as from indigenous peoples from other parts of Australia will assist in improving our adaptive fire management practices in Victoria. This builds on supporting community through learning about how we live with fire.

Working together to foster knowledge sharing is an important way to enable participation of Aboriginal communities.

The following cultural burns are nominated and will be led by Traditional Owners with support from Forest Fire Management Victoria and CFA (Table 5).

Table 5: Number of burns nominated by each Traditional Owner

Traditional Owners	2021/22	2022/23	2023/24
Barengi Gadjin Land Council	9	2	-
Wadawurrung	4	3	-
Dja Dja Wurrung	4	1	-

Endorsement

The 2021/22 – 2023/2024 Joint Fuel Management Program has been endorsed by:

Deputy Chief Fire Officer, Grampians DELWP Region:	Tony English
Deputy Chief Officer – Service Delivery, West CFA Region:	Michael Boatman

Approval

The 2021/22 – 2023/2024 Joint Fuel Management Program has been approved by:

DELWP Chief Fire Officer:	Chris Hardman
CFA Chief Officer:	Jason Heffeman

Noting for on-ground ignition and delivery of cross tenure and private property burns, FFMVic and CFA agency responsibilities remain unchanged.

How to become involved in the development of the Joint Fuel Management Program

FFMVic and CFA welcome comment on fire management all year round, on all parts of the planning process – both strategic and operational. Please be aware that due to the planning cycle your comments relating to certain aspects of the program may not be included until the following year's Joint Fuel Management Program.

Comments and suggestions relating to the JFMP can be sent to:

Alison Boak Regional Fuel Management Coordinator Department of Environment, Land, Water & Planning Grampians.plannedburning@delwp.vic.gov.au	Steve Alcock Manager Community Safety Country Fire Authority mcs.d15@cfa.vic.gov.au
---	--

You can find out more about our fuel management programs - FFMVic and CFA.

Planned Burns Victoria

Planned Burns Victoria (PBV) is a new, easy-to-use, opt-in system that you can customise to suit your notification needs. PBV currently provides an overview of all planned burns on this JFMP. The system also notifies people when a planned burn in Victoria is close to being ignited.

You can type in a postcode or location and access to information about planned burns on public and/or private land that are close to being ignited. You can access the system at:

<https://plannedburns.ffm.vic.gov.au>

Appendix (1): FFMVic Schedules of Activities

These schedules contain the details of FFMVic-led planned burning activities. Please note that the planned burn year and season identified for each planned burn is indicative only and may be changed due to weather conditions and operational requirements.

The following abbreviations may be used in the following Schedules: '*' asterisk on burn name denotes a cross tenure burn; PV - Parks Victoria; COM - Committee of Management; DELWP- Department of Environment Land Water and Planning; PP – Private Property; FRB – Fuel Reduction Burn; ECO - Ecological burn; REG – Regeneration Burn; TO – Traditional Owner; FMZ – Fire Management Zone; APZ - Asset Protection Zone; BMZ – Bushfire Moderation Zone; LMZ - Landscape Management Zone; PBEZ – Planned Burn Exclusion Zone; NZ -Not Zoned; FPA – Fire Protected Area.

SCHEDULE 1: FFMVic LEAD MIDLANDS DISTRICT – PLANNED BURNING

FFMVic Lead Midlands District Planned Burns 2021/22

Local Government Area	Burn Number	Burn Name	General Location	Burn Type	Land Management Objective	FMZ	Planned Burn Size (ha)	New Burn
ARARAT RURAL CITY	GR-MID-BEA-0049	MT COLE - BUCKINGHAM CK	5 KM E WARRAK	FRB	To provide bushfire protection by reducing overall fuel hazard and bushfire hazard in the landscape.	LMZ	388.1	
BALLARAT CITY	GR-MID-BAL-0049	BUNINYONG - WALLABY TRACK	4 KM E BUNINYONG	FRB	To provide the highest level of localised protection to human life, property and community assets identified as highly valued including critical infrastructure on Mount Buninyong.	APZ	21.7	
BALLARAT CITY	GR-MID-BAL-0069	BALLARAT - TAMBO RD	7 KM N BALLARAT	FRB	To develop a fuel reduced area to the North of Invermay Township and South of HVP Creswick Plantations.	BMZ	147.8	New
BALLARAT CITY	GR-MID-BAL-0312	Mount Clear - Boak Rd	1km E of Mount Clear	FRB	To provide the highest level of localised protection to human life, property and community assets identified as highly valued including Mount Clear Township and surrounding high value assets.	APZ	60.7	New
GOLDEN PLAINS SHIRE	GR-MID-BAL-0042	Dereel - Swanson Road	1km W of Dereel	FRB	To provide bushfire protection by reducing overall fuel hazard and bushfire hazard in the landscape.	LMZ	140.9	
GOLDEN PLAINS SHIRE	GR-MID-BAL-0065	SMYTHESDALE - SURFACE HILL ROAD	1KM E OF SMYTHESDALE	FRB	To develop a fuel reduced area to the East of Smythesdale and neighbouring townships.	BMZ	302.9	
GOLDEN PLAINS SHIRE	GR-MID-BAL-0199	ENFIELD - HANSONS ROAD	5 KM NE ENFIELD	FRB	To develop fuel reduced areas of sufficient width and continuity to reduce the speed and intensity of bushfires.	BMZ	323.1	

GOLDEN PLAINS SHIRE	GR-MID-BMA-0020	ANAKIE - PINE TRACK	7 KM NW ANAKIE	FRB	To develop a fuel reduced area to the North West of Anakie and surrounding townships.	BMZ	80.6	
GOLDEN PLAINS SHIRE	GR-MID-YYA-0008	Lethbridge - Boonderoo NE	7km W of Lethbridge	ECO	To modify the vegetation Composition across the planned area to assist the Promotion of Basalt plains grassland species.	LMZ	39.0	
GREATER GEELONG CITY	GR-MID-YYA-0012	You Yangs RP - Branding Yard Road	5.7km W of Little River	ECO	To modify the vegetation Abundance across the planned area to assist the Control of Boneseed.	LMZ	109	New
HEPBURN SHIRE	GR-MID-CRE-0009	Clunes Common NCR - Clunes-Campbelltown Road	2.2km N of Clunes	TO	To modify the vegetation Abundance across the planned area to assist the Promotion of Alluvial Plains Grassland.	LMZ	141.4	
HEPBURN SHIRE	GR-MID-DAY-0073	DAYLESFORD - AJAX RD	2 KM NW DAYLESFORD	FRB	To provide the highest level of localised protection to human life, property and community assets identified as highly valued including Daylesford, Hepburn Springs and surrounding communities.	APZ	239.3	
HEPBURN SHIRE	GR-MID-DAY-0085	DAYLESFORD - OLD TOM TK	4 KM SW DAYLESFORD	FRB	To provide the highest level of localised protection to human life, property and community assets identified as highly valued including Daylesford and surrounding Townships.	APZ	200.6	
HEPBURN SHIRE	GR-MID-DAY-0092	Daylesford - Osborne Rd	6.7km E of Daylesford	FRB	To provide the highest level of localised protection to human life, property and community assets identified as highly valued including Daylesford and surrounding townships.	APZ	239.9	
HEPBURN SHIRE	GR-MID-DAY-0100	HEPBURN - WERONA ROAD	10 KM NW DAYLESFORD	FRB	To develop fuel reduced areas of sufficient width and continuity to reduce the speed and intensity of bushfires.	BMZ	181.0	
HEPBURN SHIRE	GR-MID-DAY-0112	TRENTHAM - MILLER CUTTING TRACK	3 KM SW TRENTHAM	FRB	To develop a fuel reduced area to the South West of Trentham and surrounding communities.	BMZ	143.8	
MACEDON RANGES SHIRE	GR-MID-BMA-0024	Gisborne - Hobbs Road	3km SW of Gisborne	FRB	To provide the highest level of localised protection to human life, property and community assets identified as highly valued including Gisborne, Bullengarook and surrounding communities.	APZ	131.9	
MACEDON RANGES SHIRE	GR-MID-DAY-0046	NORTH BLACKWOOD - FIRTH ROAD	2KM E OF NORTH BLACKWOOD	FRB	To develop fuel reduced areas of sufficient width and continuity to reduce the speed and intensity of bushfires.	BMZ	1202.5	

MACEDON RANGES SHIRE	GR-MID-DAY-0104	Macedon - Finger Post Road	6.5km SW of Macedon	FRB	To provide the highest level of localised protection to human life, property and community assets identified as highly valued including Macedon and surrounding townships.	APZ	641.5
MOORABOOL SHIRE	GR-MID-BMA-0051	Balliang - Brisbane Ranges Landscape Ecology Unit - North Unit	16km SW of Bacchus Marsh	ECO	To promote ecological resilience in Grassy / Heathy Dry Forest by manipulating the growth stage distribution.	LMZ	668.1
MOORABOOL SHIRE	GR-MID-DAY-0076	Blackwood - Blackwood Ridge Road	1km SW of Blackwood	FRB	To provide the highest level of localised protection to human life, property and community assets identified as highly valued including Dales Creek, Blackwood and Greendale townships.	APZ	213.6
MOORABOOL SHIRE	GR-MID-DAY-0096	GREENDALE - GREENHILLS ROAD	4 KM NW GREENDALE	FRB	To build on protection works in adjacent Asset Protection Zone.	BMZ	360.7
PYRENEES SHIRE	GR-MID-BAL-0066	Snake Valley - Nunn Road	1km SE of Snake Valley	FRB	To develop a fuel reduced area to the South East of Snake Valley and surrounding townships.	BMZ	148.9
PYRENEES SHIRE	GR-MID-BEA-0031	Raglan - Amphitheatre Road	4.6km NE of Raglan	FRB	To develop a fuel reduced area to the North of Raglan, Chute, Beaufort and surrounding townships.	BMZ	197.7
PYRENEES SHIRE	GR-MID-BEA-0032	BEAUFORT - ANDREWS STATE FOREST	4 KM S BEAUFORT	FRB	To develop a fuel reduced area to the South West of Beaufort and surrounding townships.	BMZ	119.9
PYRENEES SHIRE	GR-MID-BEA-0033	BEAUFORT - BOX TK	4 KM ESE BEAUFORT	FRB	To provide bushfire protection by reducing overall fuel hazard and bushfire hazard in the landscape.	LMZ	118.0
PYRENEES SHIRE	GR-MID-BEA-0075	Skipton - Blacks Creek NCR	9km NW of Skipton	TO	To modify the vegetation Abundance across the planned area to assist the Promotion of Victorian Volcanic Plains Grassland Species.	LMZ	81.9

FFMVic Lead Midlands District Planned Burns 2022/23

Local Government Area	Burn Number	Burn Name	General Location	Burn Type	Land Management Objective	FMZ	Planned Burn Size (ha)	New Burn
BALLARAT CITY	GR-MID-BAL-0198	Nerrina - Hit or Miss Gully	1km NE Ballarat	FRB	To provide the highest level of localised protection to human life, property and community assets identified as highly valued including Nerrina, Black Hill, and Brown Hill Townships..	APZ	14.16	
BALLARAT CITY	GR-MID-BAL-0201	Burrumbeet - West Beach	20km W Ballarat	TO	To modify the vegetation Abundance across the planned area to assist the Promotion of Victorian Volcanic Plains Grassland Species.	LMZ	7.74	
BALLARAT CITY	GR-MID-BAL-0202	Ballarat - Winter Swamp Reserve - Mullawallah Wetlands	5km NW Ballarat	TO	To modify the vegetation Abundance across the planned area to assist the Promotion of Victorian Volcanic Plains Grassland Species.	LMZ	12.76	
BALLARAT CITY	GR-MID-CRE-0005	CRESWICK - PETTICOAT ROAD	3 Km S Creswick	FRB	To provide bushfire protection by reducing overall fuel hazard and bushfire hazard in the landscape.	LMZ	131.5	
GOLDEN PLAINS SHIRE	GR-MID-BAL-0055	ENFIELD - PUB	500m W Enfield	FRB	To provide the highest level of localised protection to human life, property and community assets identified as highly valued including Little Hard Hills and surrounding townships.	APZ	183.7	
GOLDEN PLAINS SHIRE	GR-MID-BAL-0059	MEREDITH - BYRNE RD	3 Km E Meredith	FRB	To provide bushfire protection by reducing overall fuel hazard and bushfire hazard in the landscape.	LMZ	35.0	
GOLDEN PLAINS SHIRE	GR-MID-BAL-0206	Enfield - Landscape Ecology Burn - South Unit	19km SW Ballarat	ECO	To promote ecological resilience in Grassy / Heathy Dry Forest by manipulating the growth stage distribution.	LMZ	716.4	
GOLDEN PLAINS SHIRE	GR-MID-BAL-0313	Linton - Jennings Rd	1.7km NW Linton	FRB	To build on protection works in adjacent Asset Protection Zone.	BMZ	83.94	New
GOLDEN PLAINS SHIRE	GR-MID-BAL-0314	Lethbridge - Boonderoo SE	7.5km W Lethbridge	ECO	To continue the set burning regime in the Fire Effects Study Area, for ongoing monitoring and research purpose.	LMZ	39.8	New
GOLDEN PLAINS SHIRE	GR-MID-SER-0003	Lethbridge - BOONDEROO SW	7km W LETHBRIDGE	ECO	To modify the vegetation Composition across the planned area to assist the Promotion of Basalt plains grassland species.	LMZ	37.1	
HEPBURN SHIRE	GR-MID-CRE-0002	CRESWICK - EAST WEST ROAD	3 Km E Creswick	FRB	To provide bushfire protection by reducing overall fuel hazard and bushfire hazard in the landscape.	LMZ	39.95	
HEPBURN SHIRE	GR-MID-CRE-0010	Clunes Common SF - Glengower Road	3km N Clunes	TO	To modify the vegetation Abundance across the planned area to assist the Promotion of Alluvial Plains Grassland.	LMZ	103.33	

HEPBURN SHIRE	GR-MID-DAY-0079	BLACKWOOD - WHEELER RD	5 Km N Blackwood	FRB	To provide the highest level of localised protection to human life, property and community assets identified as highly valued including Blackwood and surrounding townships.	APZ	87.5	
HEPBURN SHIRE	GR-MID-DAY-0090	GLENLYON - FIRE EFFECTS STUDY AREA	5km SE Glenlyon	FRB	To continue the set burning regime in the Fire Effects Study Area, for ongoing monitoring and research purpose.	BMZ	133.2	
HEPBURN SHIRE	GR-MID-DAY-0094	DAYLESFORD - TOE RAG TK	9 Km SE Daylesford	FRB	To provide bushfire protection by reducing overall fuel hazard and bushfire hazard in the landscape.	LMZ	507.1	
HEPBURN SHIRE	GR-MID-DAY-0099	HEPBURN - CRICKET WILLOW	6 Km NW Hepburn	FRB	To provide bushfire protection by reducing overall fuel hazard and bushfire hazard in the landscape.	LMZ	70.9	
HEPBURN SHIRE	GR-MID-DAY-0102	Lyonville - Babbingtons Road	0.5km N Lyonville	FRB	To develop a fuel reduced area to the North of Lyonville and surround townships.	BMZ	351.2	
HEPBURN SHIRE	GR-MID-DAY-0106	TRENTHAM - BLIGHS ROAD	3 Km W Trentham	FRB	To develop a fuel reduced area to the North of Trentham, Lyonville and surrounding townships.	BMZ	168.3	
HEPBURN SHIRE	GR-MID-DAY-0108	TRENTHAM - COOPER ROAD	10 Km SW Trentham	FRB	To provide bushfire protection by reducing overall fuel hazard and bushfire hazard in the landscape.	LMZ	202.9	
HEPBURN SHIRE	GR-MID-DAY-0110	Trentham - Jim Dunn Track	1km SE Trentham	FRB	To build on protection works in adjacent Asset Protection Zone.	BMZ	311.2	
HEPBURN SHIRE	GR-MID-DAY-0115	TRENTHAM - PEACOCK CREEK	5 Km SE Trentham	FRB	To develop fuel reduced areas of sufficient width and continuity to reduce the speed and intensity of bushfires.	BMZ	120.6	
HEPBURN SHIRE	GR-MID-DAY-0243	Daylesford - Wallaby Track	2km SW Daylesford	FRB	To provide the highest level of localised protection to human life, property and community assets identified as highly valued including Daylesford Township.	APZ	77.4	New
HEPBURN SHIRE	GR-MID-DAY-0245	Lyonville - Loddon River Road	3.2km N Lyonville	FRB	To provide the highest level of localised protection to human life, property and community assets identified as highly valued including Little Hampton Township.	APZ	149.5	New
MACEDON RANGES SHIRE	GR-MID-BMA-0025	Gisborne - Pyrites No 2 Track	4km W Gisborne	FRB	To provide bushfire protection by reducing overall fuel hazard and bushfire hazard in the landscape.	LMZ	55.8	
MOORABOOL SHIRE	GR-MID-BAL-0062	MT EGERTON - CEMETERY ROAD	1 Km S Mt Egerton	FRB	To develop a fuel reduced area to the South of Mount Egerton and surrounding townships.	BMZ	56.6	
MOORABOOL SHIRE	GR-MID-BAL-0203	Lal Lal - Lal Lal Falls	3km NE Lal Lal	TO	To modify the vegetation Abundance across the planned area to assist the Promotion of Victorian Volcanic Plains Grassland Species.	LMZ	5.29	
MOORABOOL SHIRE	GR-MID-BAL-0315	Lal Lal - Chalkmine Road	3.7km SE Lal Lal	FRB	To provide bushfire protection by reducing overall fuel hazard and bushfire hazard in the landscape.	LMZ	71.95	New

MOORABOOL SHIRE	GR-MID-BMA-0022	LERDERDERG - BLACKWOOD RANGES TRACK	10km NW Bacchus Marsh	FRB	To develop fuel reduced areas of sufficient width and continuity to reduce the speed and intensity of bushfires.	BMZ	445.2
MOORABOOL SHIRE	GR-MID-DAY-0005	TRENTAM - FIRE EFFECTS STUDY AREA	4km SE Trentham	FRB	To continue the set burning regime in the Fire Effects Study Area, for ongoing monitoring and research purpose.	LMZ	61.5
MOORABOOL SHIRE	GR-MID-DAY-0077	BARKSTEAD - WATER COMMISSION TRACK	17 Km NNW Ballan	FRB	To provide bushfire protection by reducing overall fuel hazard and bushfire hazard in the landscape.	LMZ	385.6
MOORABOOL SHIRE	GR-MID-DAY-0078	BLACKWOOD - POVEY TK	1 Km NW Blackwood	FRB	To provide the highest level of localised protection to human life, property and community assets identified as highly valued including Blackwood and surrounding townships.	APZ	253.8
MOORABOOL SHIRE	GR-MID-DAY-0081	BLAKEVILLE - HODGES TRACK	1 Km N Blakeville	FRB	To provide bushfire protection by reducing overall fuel hazard and bushfire hazard in the landscape.	LMZ	309
MOORABOOL SHIRE	GR-MID-DAY-0087	BARKSTEAD - FIRE EFFECTS STUDY AREA	2km S Barkstead	FRB	To continue the set burning regime in the Fire Effects Study Area, for ongoing monitoring and research purpose.	LMZ	22.8
PYRENEES SHIRE	GR-MID-BEA-0036	Beaufort - Larkin Road	3km N of Beaufort	FRB	To develop a fuel reduced area to the South East of Main Lead Township.	BMZ	159.3
PYRENEES SHIRE	GR-MID-BEA-0039	Beaufort - Waterloo Track	4km NE of Beaufort	FRB	To develop a fuel reduced area to the North of Beaufort and surrounding townships.	BMZ	114.2
PYRENEES SHIRE	GR-MID-BEA-0052	MT COLE - SANDERSON ROAD	16km NW of Beaufort	FRB	To develop fuel reduced areas of sufficient width and continuity to reduce the speed and intensity of bushfires.	BMZ	220.4

FFMVic Lead Midlands District Planned Burns 2023/24

Local Government Area	Burn Number	Burn Name	General Location	Burn Type	Land Management Objective	FMZ	Planned Burn Size (ha)	New Burn
ARARAT RURAL CITY	GR-MID-BEA-0042	MT COLE - VICTORIA HILL	13 Km NE Buangor	FRB	To provide bushfire protection by reducing overall fuel hazard and bushfire hazard in the landscape.	LMZ	112	
BALLARAT CITY	GR-MID-BAL-0316	Ballarat - York Street	4.5km E of Ballarat	FRB	To provide the highest level of localised protection to human life, property and community assets identified as highly valued including Ballarat East, Ballarat Wildlife Park.	APZ	28.1	New
GOLDEN PLAINS SHIRE	GR-MID-BAL-0054	ENFIELD - PEPPERMINT TK	4 Km N Dereel	FRB	To develop a fuel reduced area to the North of Township of Dereel and surrounds.	BMZ	135.6	
GOLDEN PLAINS SHIRE	GR-MID-BMA-0019	ANAKIE - FURZE TK	7 Km NNW Anakie	FRB	To provide bushfire protection by reducing overall fuel hazard and bushfire hazard in the landscape.	LMZ	154.6	
HEPBURN SHIRE	GR-MID-CRE-0003	CRESWICK - JACKASS RD	3 Km SE Creswick	FRB	To provide bushfire protection by reducing overall fuel hazard and bushfire hazard in the landscape.	LMZ	124.9	
HEPBURN SHIRE	GR-MID-CRE-0004	CRESWICK - NUGGETY GULLY ROAD	500m SW Creswick	FRB	To provide the highest level of localised protection to human life, property and community assets identified as highly valued including Creswick and surrounding townships.	APZ	68.81	
HEPBURN SHIRE	GR-MID-DAY-0091	DAYLESFORD - LANGDONS HILL ROAD	5 Km SW Daylesford	FRB	To develop a fuel reduced area to the East of Leonards Hill and neighbouring communities.	BMZ	631.1	
HEPBURN SHIRE	GR-MID-DAY-0098	HEPBURN - BLOWHOLE TRACK	2km W Hepburn	FRB	To develop a fuel reduced area to the West of Hepburn and Surrounding townships.	BMZ	198.9	
HEPBURN SHIRE	GR-MID-DAY-0101	Hepburn - Yandoit Track	7km NW Of Hepburn	FRB	To develop a fuel reduced area to the North West of Hepburn and surrounding townships.	BMZ	142.3	
HEPBURN SHIRE	GR-MID-DAY-0107	TRENTHAM - BLUE MOUNT ROAD	1 Km SW Trentham	FRB	To provide the highest level of localised protection to human life, property and community assets identified as highly valued including Trentham Township.	APZ	97.3	
HEPBURN SHIRE	GR-MID-DAY-0242	Daylesford - Sailors Falls	3.5km SW Of Daylesford	FRB	To provide the highest level of localised protection to human life, property and community assets identified as highly valued including Musk Vale and Sailors Falls townships.	APZ	204.5	New
HEPBURN SHIRE	GR-MID-DAY-0246	Daylesford - Champagne Track	4.2km SW Of Daylesford	FRB	To provide the highest level of localised protection to human life, property and community assets identified as highly valued including Eganstown township.	APZ	64.4	New

MACEDON RANGES SHIRE	GR-MID-BMA-0023	GISBORNE - BULLARD RD	5 Km SW Gisborne	FRB	To provide the highest level of localised protection to human life, property and community assets identified as highly valued including Gisbourne and surrounding townships.	APZ	106.7
MACEDON RANGES SHIRE	GR-MID-BMA-0052	Gisborne - Pyrete Landscape Ecology Burn - Central Unit	6km SW Gisborne	ECO	To promote ECO resilience in Grassy / Heathy Dry Forest by manipulating the growth stage distribution.	LMZ	548.4
MACEDON RANGES SHIRE	GR-MID-DAY-0103	Macedon - Christie Road	3km NW Macedon	FRB	To provide the highest level of localised protection to human life, property and community assets identified as highly valued including Macedon and surrounding Townships.	APZ	60.9
MACEDON RANGES SHIRE	GR-MID-DAY-0105	North Blackwood - Campaspe Road	1km NE North Blackwood	FRB	To develop a fuel reduced area to the North East of Blackwood and surrounding townships.	BMZ	303.2
MOORABOOL SHIRE	GR-MID-BAL-0057	LAL LAL - ANDERSON ROAD	5 Km SE Lal Lal	FRB	To provide bushfire protection by reducing overall fuel hazard and bushfire hazard in the landscape.	LMZ	119.7
MOORABOOL SHIRE	GR-MID-DAY-0080	BLAKEVILLE - CRICKET GROUND TRACK	1 Km NW Blakeville	FRB	To provide bushfire protection by reducing overall fuel hazard and bushfire hazard in the landscape.	LMZ	228.6
MOORABOOL SHIRE	GR-MID-DAY-0116	Barkstead - Squires Track	8km SW Daylesford	FRB	To develop a fuel reduced area to the West of Korweinguboora township and to the North East of the Barkstead township.	BMZ	468.2
MOORABOOL SHIRE	GR-MID-DAY-0184	Blackwood - Wombat Ecology Burn - Central Unit	2km W Blackwood	ECO	To promote ECO resilience in Grassy / Heathy Dry Forest by manipulating the growth stage distribution.	LMZ	1022.6
MOORABOOL SHIRE	GR-MID-DAY-0185	BLACKWOOD - EASTER MONDAY TRACK	1 Km SW Blackwood	FRB	To develop a fuel reduced area to the South West of Blackwood and North of Dales Creek and Greendale..	BMZ	253.3
PYRENEES SHIRE	GR-MID-BAL-0067	Snake Valley - Tannery Road	1km SE Snake Valley	FRB	To develop a fuel reduced area to the South East of Snake Valley and Surrounding townships.	BMZ	144.8
PYRENEES SHIRE	GR-MID-BEA-0035	BEAUFORT - COPPICE TK	3 Km SE Beaufort	FRB	To develop a fuel reduced area to the South West of Trawalla Township.	BMZ	61.7
PYRENEES SHIRE	GR-MID-BEA-0038	Beaufort - Raglan Track	1km NE Beaufort	FRB	To develop a fuel reduced area to the North of Beaufort Township.	BMZ	64.1

SCHEDULE 1: FFMVic LEAD WIMMERA DISTRICT – PLANNED BURNING

FFMVic Lead Wimmera District Planned Burns 2021/22

Local Government Area	Burn Number	Burn Name	General Location	Burn Type	Land Management Objective	FMZ	Planned Burn Size (ha)	New Burn
ARARAT RURAL CITY	GR-WIM-CAV-0073	Grampians NP - Yarram Gap	6km N of Bornes Hill	FRB	To provide bushfire protection by reducing overall fuel hazard and bushfire hazard in the landscape.	LMZ	1862.0	
ARARAT RURAL CITY	GR-WIM-HGP-0018	Ararat - Snake Hill Track	4km NW of Ararat	FRB	To provide the highest level of localised protection to human life, property and community assets identified as highly valued including Ararat Township.	APZ	52.1	
HINDMARSH SHIRE	GR-WIM-HSM-0004	Wail - Bottlebrush Track	3.1km W of WAIL	FRB	To provide bushfire protection by reducing overall fuel hazard and bushfire hazard in the landscape.	LMZ	293.3	
HINDMARSH SHIRE	GR-WIM-WAL-0001	Little Desert NP - East Block North Break - East	4km S of Dimboola	FRB	To develop a fuel reduced area to the South West of Dimboola Township.	BMZ	125.6	
HINDMARSH SHIRE	GR-WIM-WAL-0022	Little Desert NP - Eagle Swamp Tk W2	8km SW of Dimboola	FRB	To provide bushfire protection by reducing overall fuel hazard and bushfire hazard in the landscape.	LMZ	277.5	
HINDMARSH SHIRE	GR-WIM-WAL-0034	Nhill - Nhill Swamp WR	1km S of Nhill	FRB	To provide the highest level of localised protection to human life, property and community assets identified as highly valued including Township of Nhill.	APZ	11.4	
HINDMARSH SHIRE	GR-WIM-WAL-0035	Dimboola - Lochiel Rest Stop	6km NW of Dimboola	FRB	To develop fuel reduced areas of sufficient width and continuity to reduce the speed and intensity of bushfires.	BMZ	8.5	
HINDMARSH SHIRE	GR-WIM-WAL-0036	Salisbury BR - Salisbury South Rd	10km E of Nhill	ECO	To modify the vegetation Abundance across the planned area to assist the Promotion of Golden Sun Moth.	LMZ	12.9	
HORSHAM RURAL CITY	GR-WIM-HSM-0007	Longerenong - Drung Jung Rd	13km NE of Horsham	ECO	To modify the vegetation Composition across the planned area to assist the Promotion of Alluvial Plains Grassland.	LMZ	34.9	
HORSHAM RURAL CITY	GR-WIM-HSM-0013	Jilpanger NCR - Bow Lake Rd	15km NW of Toolondo	ECO	To promote ECO resilience in Heathland (sands) by manipulating the growth stage distribution.	LMZ	741.8	
HORSHAM RURAL CITY	GR-WIM-HSM-0179	Pimpinio - Nine Mile Hotel Rd	4km S of Pimpinio	ECO	To modify the vegetation Composition across the planned area to assist the Promotion of Alluvial Plains Grassland.	LMZ	6.0	

HORSHAM RURAL CITY	GR-WIM-WAL-0037	Arapiles - Walpa Dyurrita	8km W of Natimuk	TO	To modify the vegetation Abundance across the planned area to assist the Promotion of Grassy / Heathy Dry Forest.	LMZ	8.9
NORTHERN GRAMPIANS SHIRE	GR-WIM-HGP-0008	Grampians NP - Phillip Island Tk	5km W of Halls Gap	FRB	To develop fuel reduced areas of sufficient width and continuity to reduce the speed and intensity of bushfires.	BMZ	2911
NORTHERN GRAMPIANS SHIRE	GR-WIM-HGP-0040	Grampians NP - Cranage Rd	9km SE of Wartook	FRB	To develop fuel reduced areas of sufficient width and continuity to reduce the speed and intensity of bushfires.	BMZ	279.2
NORTHERN GRAMPIANS SHIRE	GR-WIM-HGP-0042	Grampians NP - Oslers Tk	7km N of Halls Gap	FRB	To develop fuel reduced areas of sufficient width and continuity to reduce the speed and intensity of bushfires.	BMZ	455.5
NORTHERN GRAMPIANS SHIRE	GR-WIM-HGP-0068	Grampians NP - Stony Creek Rd	3km SW of Halls Gap	FRB	To develop fuel reduced areas of sufficient width and continuity to reduce the speed and intensity of bushfires.	BMZ	468.6
NORTHERN GRAMPIANS SHIRE	GR-WIM-HGP-0070	Grampians NP - Boroka Lookout	2km W of Halls Gap	FRB	To develop fuel reduced areas of sufficient width and continuity to reduce the speed and intensity of bushfires.	BMZ	471.5
NORTHERN GRAMPIANS SHIRE	GR-WIM-HSM-0008	Deep Lead - Deep Lead Road	3km NW of Stawell	FRB	To develop fuel reduced areas of sufficient width and continuity to reduce the speed and intensity of bushfires.	BMZ	87.0
NORTHERN GRAMPIANS SHIRE	GR-WIM-HSM-0102	Glenorchy - Glenorchy Bushland Reserve	0.5km W of Glenorchy	FRB	To develop a fuel reduced area to the North West of Glenorchy Township.	BMZ	24.4
NORTHERN GRAMPIANS SHIRE	GR-WIM-HSM-0171	Grampians NP - Pohlner Rd	10km W of Dadswells Bridge	FRB	To provide bushfire protection by reducing overall fuel hazard and bushfire hazard in the landscape.	LMZ	3428.9
SOUTHERN GRAMPIANS SHIRE	GR-WIM-CAV-0008	Grampians NP - Fields Tk	2.5km SE of Mirranatwa	FRB	To develop fuel reduced areas of sufficient width and continuity to reduce the speed and intensity of bushfires.	BMZ	602.3
SOUTHERN GRAMPIANS SHIRE	GR-WIM-CAV-0009	Grampians NP - Victoria Range Rd	13km W of Mirranatwa	FRB	To provide bushfire protection by reducing overall fuel hazard and bushfire hazard in the landscape.	LMZ	2540.9
SOUTHERN GRAMPIANS SHIRE	GR-WIM-CAV-0069	Rocklands - Craigs Rd	22km E of Balmoral	FRB	To provide bushfire protection by reducing overall fuel hazard and bushfire hazard in the landscape.	LMZ	1118.9
SOUTHERN GRAMPIANS SHIRE	GR-WIM-CAV-0070	Glenisla SF - Brooks Rd	27km NE of Balmoral	FRB	To provide bushfire protection by reducing overall fuel hazard and bushfire hazard in the landscape.	LMZ	286.1
SOUTHERN GRAMPIANS SHIRE	GR-WIM-HGP-0015	Grampians NP - Syphon Rd	17km SW of Halls Gap	ECO	To modify the vegetation Structure across the planned area to assist the Promotion of Heathland (sands).	LMZ	2852.5

WEST WIMMERA SHIRE	GR-WIM-EDE-0003	Harrow - Tea Tree Creek Rd	6km W of Harrow	FRB	To develop a fuel reduced area to the West of Harrow Township.	BMZ	353.7
WEST WIMMERA SHIRE	GR-WIM-EDE-0006	Little Desert NP - Lillimur Tk E2	24km SW of Kaniva	FRB	To provide bushfire protection by reducing overall fuel hazard and bushfire hazard in the landscape.	LMZ	316.6
WEST WIMMERA SHIRE	GR-WIM-EDE-0013	Edenhope - Jennings Road North	4km NW of Edenhope	FRB	To modify the vegetation Structure across the planned area to assist the Promotion of Grassy / Heathy Dry Forest.	BMZ	73.1
WEST WIMMERA SHIRE	GR-WIM-EDE-0087	Lake Ratzcastle LR - Lake Ratzcastle Campground	10km S of Goroke	FRB	To provide bushfire protection by reducing overall fuel hazard and bushfire hazard in the landscape.	LMZ	22.4
WEST WIMMERA SHIRE	GR-WIM-EDE-0089	Little Desert NP - East West Tk East N2	11km N of Minimay	FRB	To provide bushfire protection by reducing overall fuel hazard and bushfire hazard in the landscape.	LMZ	90.6
WEST WIMMERA SHIRE	GR-WIM-EDE-0091	Konnepra SF - J Ridlers Tk	7km NE of Charam	FRB	To provide bushfire protection by reducing overall fuel hazard and bushfire hazard in the landscape.	LMZ	43.4
WEST WIMMERA SHIRE	GR-WIM-EDE-0096	Tallageira - Brippick Tk	6km SE of Neuarpurr	FRB	To provide bushfire protection by reducing overall fuel hazard and bushfire hazard in the landscape.	LMZ	204.8
WEST WIMMERA SHIRE	GR-WIM-EDE-0149	Apsley BR - Apsley Common	0.5km NW of Apsley	FRB	To provide the highest level of localised protection to human life, property and community assets identified as highly valued including Apsley Township.	APZ	10.1
WEST WIMMERA SHIRE	GR-WIM-EDE-0153	Little Desert NP - Elliots Tk East N2	19km S of Lillimur	FRB	To provide bushfire protection by reducing overall fuel hazard and bushfire hazard in the landscape.	LMZ	138.6
WEST WIMMERA SHIRE	GR-WIM-WAL-0004	Little Desert NP - Central Block South Bk	15km NE of Minimay	FRB	To develop fuel reduced areas of sufficient width and continuity to reduce the speed and intensity of bushfires.	BMZ	246.2
WEST WIMMERA SHIRE	GR-WIM-WAL-0023	Little Desert NP - Jungkum Tk E2	10km NE of Nurcoun	FRB	To provide bushfire protection by reducing overall fuel hazard and bushfire hazard in the landscape.	LMZ	309.8
WEST WIMMERA SHIRE	GR-WIM-WAL-0024	Little Desert NP - Stans Camp Tk E1	10km NW of Nurcoun	FRB	To provide bushfire protection by reducing overall fuel hazard and bushfire hazard in the landscape.	LMZ	262.5
WEST WIMMERA SHIRE	GR-WIM-WAL-0032	Little Desert NP - McDonalds Hwy N2	11km NW of Nurcoun	FRB	To provide bushfire protection by reducing overall fuel hazard and bushfire hazard in the landscape.	LMZ	431.7
YARRIAMBIACK SHIRE	GR-WIM-HSM-0178	Brynterion SF - Walpa	7km E of Lubeck	TO	To modify the vegetation Abundance across the planned area to assist the Promotion of Grassy / Heathy Dry Forest.	LMZ	633.8

FFMVic Lead Wimmera District Planned Burns 2022/23

Local Government Area	Burn Number	Burn Name	General Location	Burn Type	Land Management Objective	FMZ	Planned Burn Size (ha)	New Burn
ARARAT RURAL CITY	GR-WIM-CAV-0034	Grampians NP - Grampians Rd	5km SE of Mirranatwa	FRB	To provide bushfire protection by reducing overall fuel hazard and bushfire hazard in the landscape.	LMZ	1107.6	
ARARAT RURAL CITY	GR-WIM-HGP-0013	Grampians NP - Lynches Crossing Rd	3km N of Bornes Hill	FRB	To provide bushfire protection by reducing overall fuel hazard and bushfire hazard in the landscape.	LMZ	1179.5	
ARARAT RURAL CITY	GR-WIM-HGP-0017	Grampians NP - Jimmys Creek Rd	8km E of Mirranatwa	FRB	To provide bushfire protection by reducing overall fuel hazard and bushfire hazard in the landscape.	LMZ	3234	
ARARAT RURAL CITY	GR-WIM-HGP-0062	Grampians NP - Childs Lane	14km NE of Dunkeld	ECO	To promote ecological resilience in Heathland (sands) by manipulating the growth stage distribution.	LMZ	1060.9	
ARARAT RURAL CITY	GR-WIM-HGP-0079	Grampians NP - Kalymna Falls	9km W of Moyston	FRB	To provide bushfire protection by reducing overall fuel hazard and bushfire hazard in the landscape.	LMZ	4095.2	
ARARAT RURAL CITY	GR-WIM-HGP-0084	Ararat RP - Bridal Hill	3km NW of Ararat	FRB	To provide the highest level of localised protection to human life, property and community assets identified as highly valued including Ararat Township.	APZ	46.9	
HINDMARSH SHIRE	GR-WIM-WAL-0007	Little Desert NP - McCabes Hut Tk W1	12km SW of Dimboola	FRB	To provide bushfire protection by reducing overall fuel hazard and bushfire hazard in the landscape.	LMZ	334.4	
HINDMARSH SHIRE	GR-WIM-WAL-0039	Little Desert NP - Dahlenbergs Mill Tk N2	22km SW of Dimboola	FRB	To provide bushfire protection by reducing overall fuel hazard and bushfire hazard in the landscape.	LMZ	461.3	
HINDMARSH SHIRE	GR-WIM-WAL-0040	Little Desert NP - Mallee Tk W2	15km SW of Dimboola	FRB	To provide bushfire protection by reducing overall fuel hazard and bushfire hazard in the landscape.	LMZ	155.1	
HINDMARSH SHIRE	GR-WIM-WAL-0047	Glenlee FFR - Walpa	16km SW of Jeparit	TO	To modify the vegetation Abundance across the planned area to assist the Control of Grassy / Heathy Dry Forest.	LMZ	189	
HINDMARSH SHIRE	GR-WIM-WAL-0048	Big One Dam BR - Walpa	18km NE of Nhill	TO	To modify the vegetation Abundance across the planned area to assist the Promotion of Grassy / Heathy Dry Forest.	LMZ	21.9	
HINDMARSH SHIRE	GR-WIM-WAL-0050	Dimboola - Common Walpa	1km W of Dimboola	TO	To provide bushfire protection by reducing overall fuel hazard and bushfire hazard in the landscape.	LMZ	22	

HORSHAM RURAL CITY	GR-WIM-HSM-0101	Clear Lake LR - Lake Bed Fairy Grass	0.2km E of Clear Lake	ECO	To modify the vegetation Abundance across the planned area to assist the Control of Fairy Grass.	APZ	134.5
HORSHAM RURAL CITY	GR-WIM-HSM-0174	Wimmera River WF - Walpa Barengi	.5km SW of Horsham	TO	To modify the vegetation Abundance across the planned area to assist the Promotion of Riparian.	LMZ	0.04
HORSHAM RURAL CITY	GR-WIM-HSM-0182	Jallumba Marsh FR - Walpa	5km N of Toolondo	TO	To modify the vegetation Abundance across the planned area to assist the Control of Grassy / Heathy Dry Forest.	LMZ	85.3
HORSHAM RURAL CITY	GR-WIM-HSM-0183	Box Swamp WR - Walpa	13km W of Horsham	TO	To modify the vegetation Abundance across the planned area to assist the Promotion of Grassy / Heathy Dry Forest.	LMZ	61.1
HORSHAM RURAL CITY	GR-WIM-WAL-0049	Wail BR - Lambing Hut Walpa	4km W of Pimpinio	TO	To modify the vegetation Abundance across the planned area to assist the Control of Grassy / Heathy Dry Forest.	LMZ	44.5
NORTHERN GRAMPIANS SHIRE	GR-WIM-HGP-0043	Grampians NP - Flagstaff Tk	2km N of Wartook	FRB	To develop fuel reduced areas of sufficient width and continuity to reduce the speed and intensity of bushfires.	BMZ	1212.8
NORTHERN GRAMPIANS SHIRE	GR-WIM-HGP-0044	Grampians NP - Asses Ears Rd	4km S of Wartook	FRB	To develop fuel reduced areas of sufficient width and continuity to reduce the speed and intensity of bushfires.	BMZ	586.9
NORTHERN GRAMPIANS SHIRE	GR-WIM-HGP-0047	Grampians NP - Vic Valley Airbase	14km E of Glenisla	FRB	To provide bushfire protection by reducing overall fuel hazard and bushfire hazard in the landscape.	LMZ	533.3
NORTHERN GRAMPIANS SHIRE	GR-WIM-HGP-0069	Grampians NP - Mt Bagara	5km W of Halls Gap	FRB	To develop fuel reduced areas of sufficient width and continuity to reduce the speed and intensity of bushfires.	BMZ	329.3
NORTHERN GRAMPIANS SHIRE	GR-WIM-HGP-0080	Grampians NP - Rose Creek Rd	8km NW of Halls Gap	FRB	To develop fuel reduced areas of sufficient width and continuity to reduce the speed and intensity of bushfires.	BMZ	163.2
NORTHERN GRAMPIANS SHIRE	GR-WIM-HGP-0083	Grampians NP - Mt Zero Rd - South	3km N of Halls Gap	FRB	To provide bushfire protection by reducing overall fuel hazard and bushfire hazard in the landscape.	LMZ	105.3
NORTHERN GRAMPIANS SHIRE	GR-WIM-HSM-0177	Grampians NP - Golton Creek	6km W of Dadswells Bridge	FRB	To provide bushfire protection by reducing overall fuel hazard and bushfire hazard in the landscape.	LMZ	3396.8
NORTHERN GRAMPIANS SHIRE	GR-WIM-HSM-0181	Wal Wal Swamp WR - Walpa	10km NW of Glenorchy	TO	To modify the vegetation Abundance across the planned area to assist the Control of Grassy / Heathy Dry Forest.	LMZ	19.4
NORTHERN GRAMPIANS SHIRE	GR-WIM-HSM-0187	Grampians NP - Briggs Tk	1km SW of Dadswells Bridge	FRB	To provide bushfire protection by reducing overall fuel hazard and bushfire hazard in the landscape.	LMZ	899.8

SOUTHERN GRAMPIANS SHIRE	GR-WIM-CAV-0006	Grampians NP - Hoffmanns Rd	3km E of Mooralla	FRB	To provide bushfire protection by reducing overall fuel hazard and bushfire hazard in the landscape.	LMZ	1622.4
SOUTHERN GRAMPIANS SHIRE	GR-WIM-CAV-0036	Grampians NP - Mt Sturgeon	2km N of Dunkeld	FRB	To develop a fuel reduced area to the North West of Dunkeld Township.	BMZ	256.3
SOUTHERN GRAMPIANS SHIRE	GR-WIM-CAV-0064	Grampians NP - Victoria Point	18km NE of Cavendish	FRB	To promote ecological resilience in Grassy / Heathy Dry Forest by manipulating the growth stage distribution.	LMZ	7764
SOUTHERN GRAMPIANS SHIRE	GR-WIM-CAV-0065	Balmoral SF - Rocklands Rd	3km NE of Balmoral	FRB	To provide bushfire protection by reducing overall fuel hazard and bushfire hazard in the landscape.	LMZ	120.4
SOUTHERN GRAMPIANS SHIRE	GR-WIM-CAV-0067	Claude Austin SF - Glendinning	11km SE of Balmoral	FRB	To provide bushfire protection by reducing overall fuel hazard and bushfire hazard in the landscape.	LMZ	263.3
SOUTHERN GRAMPIANS SHIRE	GR-WIM-CAV-0071	Grampians NP - Cassidy Gap Rd	3km N of Dunkeld	FRB	To develop fuel reduced areas of sufficient width and continuity to reduce the speed and intensity of bushfires.	BMZ	1328.8
WEST WIMMERA SHIRE	GR-WIM-EDE-0009	Little Desert NP - Western Block Southern Break	7km N of Minimay	FRB	To provide bushfire protection by reducing overall fuel hazard and bushfire hazard in the landscape.	LMZ	568.5
WEST WIMMERA SHIRE	GR-WIM-EDE-0012	Little Desert NP - Tallageira Tk	14km S of Serviceton	FRB	To promote ecological resilience in Heathland (sands) by manipulating the growth stage distribution.	LMZ	2679
WEST WIMMERA SHIRE	GR-WIM-EDE-0093	Kadnook - Forest Tk	14km SE of Edenhope	FRB	To provide bushfire protection by reducing overall fuel hazard and bushfire hazard in the landscape.	LMZ	309.9
WEST WIMMERA SHIRE	GR-WIM-EDE-0094	Durong SF - Dergholm-Edenhope Rd	3km SW of Powers Creek	FRB	To provide bushfire protection by reducing overall fuel hazard and bushfire hazard in the landscape.	LMZ	225.2
WEST WIMMERA SHIRE	GR-WIM-EDE-0099	Morea - Swamp Tk	12km SE of Minimay	FRB	To provide bushfire protection by reducing overall fuel hazard and bushfire hazard in the landscape.	LMZ	248.9
WEST WIMMERA SHIRE	GR-WIM-EDE-0100	Kalingur SF - Karnak Tk	11km S of Gymbowen	FRB	To provide bushfire protection by reducing overall fuel hazard and bushfire hazard in the landscape.	LMZ	62.1
WEST WIMMERA SHIRE	GR-WIM-EDE-0150	Little Desert NP - East West Tk Border S2	12km NE of Frances	FRB	To provide bushfire protection by reducing overall fuel hazard and bushfire hazard in the landscape.	LMZ	169.8
WEST WIMMERA SHIRE	GR-WIM-EDE-0151	Little Desert NP - East West Tk Central N2	13km NW of Minimay	FRB	To provide bushfire protection by reducing overall fuel hazard and bushfire hazard in the landscape.	LMZ	312.3
WEST WIMMERA SHIRE	GR-WIM-EDE-0154	Sheepwash Charam WR - Walpa	22km NE of Edenhope	TO	To modify the vegetation Composition across the planned area to assist the	LMZ	165.3

					Promotion of Grassy / Heathy Dry Forest.			
WEST WIMMERA SHIRE	GR-WIM-EDE-0155	Ozenkadnook - Waits SF	4km SE of Ozenkadnook	FRB	To provide bushfire protection by reducing overall fuel hazard and bushfire hazard in the landscape.	LMZ	367.9	
WEST WIMMERA SHIRE	GR-WIM-EDE-0156	Kalingur SF - Yonda Pines Track	11km SE of Goroke	FRB	To provide bushfire protection by reducing overall fuel hazard and bushfire hazard in the landscape.	LMZ	858.5	
WEST WIMMERA SHIRE	GR-WIM-EDE-0157	Yallakar SF - Haylocks Rd	7km NW of Harrow	FRB	To provide bushfire protection by reducing overall fuel hazard and bushfire hazard in the landscape.	LMZ	253.7	
WEST WIMMERA SHIRE	GR-WIM-EDE-0160	Harrow SF - Golf Course North	2km N of Harrow	FRB	To provide bushfire protection by reducing overall fuel hazard and bushfire hazard in the landscape.	LMZ	54.8	
WEST WIMMERA SHIRE	GR-WIM-HSM-0180	Jilpanger NCR - Lake Coyrahilla	6km N of Douglas	FRB	To promote ecological resilience in Grassy / Heathy Dry Forest by manipulating the growth stage distribution.	LMZ	1177	
WEST WIMMERA SHIRE	GR-WIM-WAL-0012	Toosan - Middle Rd	21km SW of Natimuk	FRB	To modify the vegetation Abundance across the planned area to assist the Promotion of Banksia.	LMZ	344.6	
WEST WIMMERA SHIRE	GR-WIM-WAL-0038	Little Desert NP - Sister Hills Tk N2	15km NW of Goroke	FRB	To provide bushfire protection by reducing overall fuel hazard and bushfire hazard in the landscape.	LMZ	142.6	
WEST WIMMERA SHIRE	GR-WIM-WAL-0052	Little Desert NP - Nhill-Harrow Rd	20km S of Nhill	FRB	To develop fuel reduced areas of sufficient width and continuity to reduce the speed and intensity of bushfires.	BMZ	168.2	

FFMVic Lead Wimmera District Planned Burns 2023/24

Local Government Area	Burn Number	Burn Name	General Location	Burn Type	Land Management Objective	FMZ	Planned Burn Size (ha)	New Burn
ARARAT RURAL CITY	GR-WIM-CAV-0035	Grampians NP - Griffin South	11km S of Mirranatwa	FRB	To provide bushfire protection by reducing overall fuel hazard and bushfire hazard in the landscape.	LMZ	732	
ARARAT RURAL CITY	GR-WIM-HGP-0023	Grampians NP - Mt Duwul	9km S of Halls Gap	FRB	To provide bushfire protection by reducing overall fuel hazard and bushfire hazard in the landscape.	LMZ	7324.4	
ARARAT RURAL CITY	GR-WIM-HGP-0086	Grampians NP - Pomonal Fireline	2km NW of Pomonal	FRB	To develop fuel reduced areas of sufficient width and continuity to reduce the speed and intensity of bushfires.	BMZ	404.7	
ARARAT RURAL CITY	GR-WIM-HGP-0087	Ararat RP - Crawford Tk	3km NW of Ararat	FRB	To provide the highest level of localised protection to human life, property and community assets identified as highly valued including Ararat Township.	APZ	18.5	
HINDMARSH SHIRE	GR-WIM-WAL-0002	Little Desert NP - Phillips Tk S1	20km S of Nhill	FRB	To provide bushfire protection by reducing overall fuel hazard and bushfire hazard in the landscape.	LMZ	258.7	
HINDMARSH SHIRE	GR-WIM-WAL-0045	Little Desert NP - Link Tk N2	23km S of Nhill	FRB	To provide bushfire protection by reducing overall fuel hazard and bushfire hazard in the landscape.	LMZ	374.7	
HORSHAM RURAL CITY	GR-WIM-CAV-0068	Black Range SP - Byron Mount	18km NE of Balmoral	FRB	To provide bushfire protection by reducing overall fuel hazard and bushfire hazard in the landscape.	LMZ	4873.1	
HORSHAM RURAL CITY	GR-WIM-HSM-0103	Arapiles - Summit Rd	8km W of Natimuk	FRB	To provide bushfire protection by reducing overall fuel hazard and bushfire hazard in the landscape.	LMZ	159.4	
HORSHAM RURAL CITY	GR-WIM-WAL-0046	Little Desert NP - Dahlenbergs Tk South W2	19km NW of Natimuk	FRB	To provide bushfire protection by reducing overall fuel hazard and bushfire hazard in the landscape.	LMZ	175.3	
NORTHERN GRAMPIANS SHIRE	GR-WIM-HGP-0039	Grampians NP - Mt Gar	10km NW of Halls Gap	FRB	To provide bushfire protection by reducing overall fuel hazard and bushfire hazard in the landscape.	LMZ	2288.5	
NORTHERN GRAMPIANS SHIRE	GR-WIM-HGP-0049	Grampians NP - Wallaby Rocks	6km S of Wartook	FRB	To provide bushfire protection by reducing overall fuel hazard and bushfire hazard in the landscape.	LMZ	2514.4	
NORTHERN GRAMPIANS SHIRE	GR-WIM-HGP-0050	Grampians NP - Seven Dials	6km SW of Pomonal	FRB	To provide bushfire protection by reducing overall fuel hazard and bushfire hazard in the landscape.	LMZ	1228.8	

NORTHERN GRAMPIANS SHIRE	GR-WIM-HGP-0078	Grampians NP - Taylors Tk	9km W of Halls Gap	FRB	To develop fuel reduced areas of sufficient width and continuity to reduce the speed and intensity of bushfires.	BMZ	422.5
NORTHERN GRAMPIANS SHIRE	GR-WIM-HGP-0081	Grampians NP - Millstream Ck	6km W of Halls Gap	FRB	To develop fuel reduced areas of sufficient width and continuity to reduce the speed and intensity of bushfires.	BMZ	1155.2
SOUTHERN GRAMPIANS SHIRE	GR-WIM-CAV-0066	Claude Austin SF - Rocklands Toolondo Channel	6km E of Balmoral	FRB	To provide bushfire protection by reducing overall fuel hazard and bushfire hazard in the landscape.	LMZ	494.4
SOUTHERN GRAMPIANS SHIRE	GR-WIM-CAV-0072	Grampians NP - Picaninny	4km N of Dunkeld	FRB	To develop fuel reduced areas of sufficient width and continuity to reduce the speed and intensity of bushfires.	BMZ	243.1
SOUTHERN GRAMPIANS SHIRE	GR-WIM-HGP-0022	Grampians NP - Greens Creek Rd	6km N of Mirranatwa	FRB	To provide bushfire protection by reducing overall fuel hazard and bushfire hazard in the landscape.	LMZ	2472.1
SOUTHERN GRAMPIANS SHIRE	GR-WIM-HGP-0024	Grampians NP - Billawin Range	9km E of Glenisla	FRB	To provide bushfire protection by reducing overall fuel hazard and bushfire hazard in the landscape.	LMZ	7860.6
WEST WIMMERA SHIRE	GR-WIM-EDE-0152	Little Desert NP - Elliots Tk N2	18km S of Serviceton	FRB	To provide bushfire protection by reducing overall fuel hazard and bushfire hazard in the landscape.	LMZ	330
WEST WIMMERA SHIRE	GR-WIM-EDE-0158	Yallakar SF - Pine Hills Boundary Tk	6km NW of Harrow	FRB	To provide bushfire protection by reducing overall fuel hazard and bushfire hazard in the landscape.	LMZ	109.8
WEST WIMMERA SHIRE	GR-WIM-WAL-0026	Little Desert NP - Salt Lake Tk	17km NW of Natimuk	ECO	To promote ecological resilience in Heathland (sands) by manipulating the growth stage distribution.	LMZ	4452.5
WEST WIMMERA SHIRE	GR-WIM-WAL-0041	Little Desert NP - Broughtons Tk E2	20km SE of Kaniva	FRB	To provide bushfire protection by reducing overall fuel hazard and bushfire hazard in the landscape.	LMZ	171.4
WEST WIMMERA SHIRE	GR-WIM-WAL-0042	Little Desert NP - Sambells Tk E2	18km NW of Goroke	FRB	To provide bushfire protection by reducing overall fuel hazard and bushfire hazard in the landscape.	LMZ	124.3
WEST WIMMERA SHIRE	GR-WIM-WAL-0043	Little Desert NP - McDonalds Hwy Link Tk N2	21km SE of Kaniva	FRB	To provide bushfire protection by reducing overall fuel hazard and bushfire hazard in the landscape.	LMZ	201.8
WEST WIMMERA SHIRE	GR-WIM-WAL-0044	Little Desert NP - McDonalds Hwy Central S1	16km N of Goroke	FRB	To provide bushfire protection by reducing overall fuel hazard and bushfire hazard in the landscape.	LMZ	161.4
YARRIAMBIACK SHIRE	GR-WIM-HSM-0184	Barrabool FFR - Walpa	8km S of Murtoa	TO	To modify the vegetation Abundance across the planned area to assist the Control of Grassy / Heathy Dry Forest.	LMZ	1316.3

SCHEDULE 2: FFMVic LEAD MIDLANDS DISTRICT – MULCHING

FFMVic Lead Midlands District Mulching 2021/22

Local Government Area	Treatment Number	Treatment Name	Land Management Objective	Treatment Size (ha)	Treatment Type
BALLARAT CITY	GR-MID-BAL-0191	Nerrina - Surface Gully - Mulching	To build on protection works in adjacent Asset Protection Zone.	4.3	RENEWAL
BALLARAT CITY	GR-MID-BAL-0303	Nerrina - Duggan St MUL	To provide the highest level of localised protection to human life, property and community assets identified as highly valued including Nerrina & Brown Hill Townships.	19.6	NEW
BALLARAT CITY	GR-MID-BAL-0304	Woovookarung RP - Dozed Tk W	To provide bushfire protection by reducing overall fuel hazard and bushfire hazard in the landscape.	6.2	MAINTENANCE
BALLARAT CITY	GR-MID-BAL-0307	Black Hill - Brooksbank Ct MUL	To provide the highest level of localised protection to human life, property and community assets identified as highly valued including Black Hill township.	0.9	NEW
CORANGAMITE SHIRE	GR-MID-BEA-0074	Skipton - Skipton Mulching	To develop a fuel reduced area to the South East of Skipton Township.	2.7	MAINTENANCE
GOLDEN PLAINS SHIRE	GR-MID-BAL-0305	Smythesdale - Watsons Hill BR	To provide the highest level of localised protection to human life, property and community assets identified as highly valued including Smythesdale Township.	5.5	NEW
GOLDEN PLAINS SHIRE	GR-MID-BAL-0306	Smythesdale - Argyle Hill	To develop fuel reduced areas of sufficient width and continuity to reduce the speed and intensity of bushfires.	11.5	NEW
GOLDEN PLAINS SHIRE	GR-MID-BAL-0308	Smythesdale - Doctors Road	To provide the highest level of localised protection to human life, property and community assets identified as highly valued including Smythesdale Township.	20.1	NEW
GOLDEN PLAINS SHIRE	GR-MID-BAL-0309	Little Hard Hills - Dredge Rd	To provide the highest level of localised protection to human life, property and community assets identified as highly valued including Enfield and Little Hard Hills Townships.	16.5	NEW
GOLDEN PLAINS SHIRE	GR-MID-SER-0006	Inverleigh FR - Link Tk	To provide bushfire protection by reducing overall fuel hazard and bushfire hazard in the landscape.	36.2	NEW
GOLDEN PLAINS SHIRE	GR-MID-SER-0007	Inverleigh FR - Stage 1 Internal	To provide the highest level of localised protection to human life, property and community assets identified as highly valued including township of Inverleigh and surrounding housing estates..	7.4	NEW
GOLDEN PLAINS SHIRE	GR-MID-SER-0008	Inverleigh FR - Common Road	To provide the highest level of localised protection to human life, property and community assets identified as highly valued including Inverleigh Township and surrounding housing estates.	22.9	NEW
GOLDEN PLAINS SHIRE	GR-MID-SER-0010	Bannockburn - Wabdallah Reserve - MUL	To provide bushfire protection by reducing overall fuel hazard and bushfire hazard in the landscape.	4.6	MAINTENANCE
HEPBURN SHIRE	GR-MID-BAL-0186	Creswick - Portugese Pits - Mulching	To develop a fuel reduced area to the South East of Creswick Township.	20.9	RENEWAL
HEPBURN SHIRE	GR-MID-BAL-0302	Creswick - Cheney St	To develop a fuel reduced area to the East of Creswick Township and adjacent properties.	11.6	NEW

HEPBURN SHIRE	GR-MID-DAY-0174	Hepburn Springs - Second St	To provide the highest level of localised protection to human life, property and community assets identified as highly valued including Townships of Daylesford and Hepburn Springs.	0.9	MAINTENANCE
HEPBURN SHIRE	GR-MID-DAY-0235	Sailors Hill - Belltown Gully Tk	To provide the highest level of localised protection to human life, property and community assets identified as highly valued including Daylesford, Muskvale, Sailors Hill and surrounding Townships.	24.4	NEW
HEPBURN SHIRE	GR-MID-DAY-0240	Hepburn Springs - Ajax Rd	To provide the highest level of localised protection to human life, property and community assets identified as highly valued including Townships of Hepburn Springs & Daylesford.	12.3	NEW
MOORABOOL SHIRE	GR-MID-DAY-0234	Blackwood - Golden Point	To develop a fuel reduced area to the North West of Blackwood Township.	0.8	NEW
PYRENEES SHIRE	GR-MID-BEA-0117	Beaufort - Beaufort Common Nth	To provide bushfire protection by reducing overall fuel hazard and bushfire hazard in the landscape.	3.7	RENEWAL

SCHEDULE 2: FFMVic LEAD WIMMERA DISTRICT – MULCHING

FFMVic Lead Wimmera District Mulching 2021/22

Local Government Area	Treatment Number	Treatment Name	Land Management Objective	Treatment Size (ha)	New Treatment
Ararat	GR-WIM-HGP-0052	Moyston - Masons BR	To develop a fuel reduced area to the East of Moyston Township.	17.8	NEW
Hindmarsh	GR-WIM-WAL-0033	Little Desert - Salt Lake Tk	To provide bushfire protection by reducing overall fuel hazard and bushfire hazard in the landscape.	34.9	NEW
Northern Grampians	GR-WIM-HGP-0077	Halls Gap - Tourist Rd Mulching	To provide bushfire protection by reducing overall fuel hazard and bushfire hazard in the landscape.	6.9	NEW
Northern Grampians	GR-WIM-HSM-0107	Devils Garden SF - Devils Garden Rd	To provide bushfire protection by reducing overall fuel hazard and bushfire hazard in the landscape.	12.6	NEW
Southern Grampians	GR-WIM-CAV-0063	Cavendish BR - School Block	To provide bushfire protection by reducing overall fuel hazard and bushfire hazard in the landscape.	5.8	NEW
West Wimmera	GR-WIM-EDE-0101	Edenhope - Depot	To provide the highest level of localised protection to human life, property and community assets identified as highly valued including Edenhope Depot.	2.6	NEW
West Wimmera	GR-WIM-EDE-0102	Jilpanger - Lake Mobla Tk	To provide bushfire protection by reducing overall fuel hazard and bushfire hazard in the landscape.	35.2	NEW
West Wimmera	GR-WIM-EDE-0103	Konnepra SF - J Ridlers Tk	To provide bushfire protection by reducing overall fuel hazard and bushfire hazard in the landscape.	30	NEW
West Wimmera	GR-WIM-EDE-0104	Karnak - Kalingur SF	To provide bushfire protection by reducing overall fuel hazard and bushfire hazard in the landscape.	49.5	NEW
West Wimmera	GR-WIM-EDE-0105	Apsley - Gibson St	To provide the highest level of localised protection to human life, property and community assets identified as highly valued including Apsley Township.	2.2	NEW
West Wimmera	GR-WIM-EDE-0106	Harrow - Tip Rd	To develop a fuel reduced area to the South of Harrow Tip.	3.7	NEW

Appendix (2): CFA Schedules of Activities

These schedules contain the details of CFA-led planned burning activities. Please note that the planned burn year and season identified for each planned burn is indicative only and may be changed due to weather conditions and operational requirements.

The following abbreviations may be used: '*' asterisk on burn name denotes a cross-tenure burn; COM - Committee of Management; PP – Private Property; FRB – Fuel Reduction Burn; ECO - Ecological burn; TO – Traditional Owner.

SCHEDULE 1: CFA LEAD DISTRICT D15 – PLANNED BURNING

CFA Lead District D15 Planned Burns 2021/22

Local Government Area	Burn Number	Burn Name	Burn Type	Land Management Objective	Planned Burn Size (ha)	New Burn
BALLARAT CITY	D15-19-065	Ascot - Cattle Station Hill Rd	FRB	To provide the highest level of localised protection to human life, property and community assets identified as highly valued including Ascot area.	4.5	
BALLARAT CITY	D15-18-019	Ascot - Lesters Rd	FRB	To provide bushfire protection by reducing overall fuel hazard and bushfire hazard in the landscape.	2.1	
BALLARAT CITY	D15-19-031	Black Hill - Trigs Reserve	FRB	To provide the highest level of localised protection to human life, property and community assets identified as highly valued.	1.1	
BALLARAT CITY	D15-20-008	Canadian - Sparrow Reserve	FRB	To develop fuel reduced areas of sufficient width and continuity to reduce the speed and intensity of bushfires.	2.0	
BALLARAT CITY	D15-19-034	Damascus College	TO	To modify the vegetation Abundance across the planned area to assist the Promotion of Grassy / Heathy Dry Forest.	0.6	
BALLARAT CITY	D15-19-052	Glen Park - Glen Park 1 Burn	FRB	To provide bushfire protection by reducing overall fuel hazard and bushfire hazard in the landscape.	3.6	
BALLARAT CITY	D15-18-005	Glen Park - Glen Park 2 Candling Burn	FRB	To develop fuel reduced areas of sufficient width and continuity to reduce the speed and intensity of bushfires.	1.1	
BALLARAT CITY	D15-20-015	Glen Park - Glen Park 3 Candling Burn	FRB	To provide the highest level of localised protection to human life, property and community assets identified as highly valued including the adjacent properties within Glen Park.	8.0	
BALLARAT CITY	D15-20-013	Sebastopol - Redan Wetlands	FRB	To provide bushfire protection by reducing overall fuel hazard and bushfire hazard in the landscape.	1.6	
BALLARAT CITY	D15-20-012	Miners Rest - Miners Rest Wetlands	FRB	To modify the vegetation Structure across the planned area to assist the Promotion of Alluvial Plains Grassland.	12.9	
BALLARAT CITY	D15-20-010	Miners Rest - Miners Rest Swamp	ECO	To provide the highest level of localised protection to human life, property and community assets identified as highly valued including Miners Rest Community and the park lands.	1.3	
BALLARAT CITY	D15-20-007	Nerrina - Doodts Road	FRB	To develop fuel reduced areas of sufficient width and continuity to reduce the speed and intensity of bushfires.	1.0	

BALLARAT CITY	D15-19-051	Wendouree - Pioneer Park	FRB	To provide the highest level of localised protection to human life, property and community assets identified as highly valued including Pioneer Park.	0.6	
BALLARAT CITY	D15-19-008	Sebastopol - Gun Club	FRB	To provide the highest level of localised protection to human life, property and community assets identified as highly valued including Sebastopol.	4.6	
BALLARAT CITY	D15-18-007	Mount Helen - Fed Uni	FRB	To provide the highest level of localised protection to human life, property and community assets identified as highly valued including State Library building.	6.3	
BALLARAT CITY	D15-21-028	Mount Clear - Jones Rd Candling	FRB	To provide the highest level of localised protection to human life, property and community assets identified as highly valued including Jones Avenue.	4.0	New
GOLDEN PLAINS SHIRE	D15-20-023	Cape Clear - Springdallah Reserve	FRB	To provide bushfire protection by reducing overall fuel hazard and bushfire hazard in the landscape.	4.8	
GOLDEN PLAINS SHIRE	D15-20-022	Cape Clear - Cape Clear Township Breaks	FRB	To provide bushfire protection by reducing overall fuel hazard and bushfire hazard in the landscape.	34.5	
GOLDEN PLAINS SHIRE	D15-20-019	Cape Clear - Pitfield-Cressy Rd	FRB	To develop fuel reduced areas of sufficient width and continuity to reduce the speed and intensity of bushfires.	10.5	
GOLDEN PLAINS SHIRE	D15-19-011	Cape Clear - Rokewood Skipton Rd	FRB	To develop fuel reduced areas of sufficient width and continuity to reduce the speed and intensity of bushfires.	15.6	
GOLDEN PLAINS SHIRE	D15-20-001	Garibaldi - Garibaldi Public Hall	FRB	To develop fuel reduced areas of sufficient width and continuity to reduce the speed and intensity of bushfires.	3.1	
GOLDEN PLAINS SHIRE	D15-19-018	Mannibadar - Rokewood-Skipton Road	FRB	To develop fuel reduced areas of sufficient width and continuity to reduce the speed and intensity of bushfires.	59.7	
GOLDEN PLAINS SHIRE	D15-19-014	Haddon-Windermere Rd	FRB	To develop fuel reduced areas of sufficient width and continuity to reduce the speed and intensity of bushfires.	10.9	
GOLDEN PLAINS SHIRE	D15-20-024	Rokewood Junction - Dereel-Rokewood Junction Rd	FRB	To provide bushfire protection by reducing overall fuel hazard and bushfire hazard in the landscape.	4.4	
GOLDEN PLAINS SHIRE	D15-19-015	Mt Mercer-Buninyong Rd	FRB	To develop fuel reduced areas of sufficient width and continuity to reduce the speed and intensity of bushfires.	1.9	
GOLDEN PLAINS SHIRE	D15-21-011	Rokewood Junction - Illabarook BEN Reserves	FRB	To provide bushfire protection by reducing overall fuel hazard and bushfire hazard in the landscape.	18.3	New
GOLDEN PLAINS SHIRE	D15-19-022	Rokewood Junction - Pitfield-Cressy Rd	FRB	To develop fuel reduced areas of sufficient width and continuity to reduce the speed and intensity of bushfires.	17.6	
GOLDEN PLAINS SHIRE	D15-19-033	Rokewood Junction - Rokewood-Skipton Rd	FRB	To develop fuel reduced areas of sufficient width and continuity to reduce the speed and intensity of bushfires.	24.7	
GOLDEN PLAINS SHIRE	D15-20-021	Wallinduc - Urches Rd	FRB	To provide bushfire protection by reducing overall fuel hazard and bushfire hazard in the landscape.	22.6	
GOLDEN PLAINS SHIRE	D15-19-016	Linton - Mitchells Road	FRB	To develop fuel reduced areas of sufficient width and continuity to reduce the speed and intensity of bushfires.	4.3	
GOLDEN PLAINS SHIRE	D15-19-017	Linton - Linton-Naringhil Road	FRB	To develop fuel reduced areas of sufficient width and continuity to reduce the speed and intensity of bushfires.	6.3	
GOLDEN PLAINS SHIRE	D15-21-021	Rokewood Junction - Cape Clear - Rokewood Rd	FRB	To provide bushfire protection by reducing overall fuel hazard and bushfire hazard in the landscape.	2.8	
GOLDEN PLAINS SHIRE	D15-21-041	Rokewood Junction - Moonlight Road	FRB	To provide bushfire protection by reducing overall fuel hazard and bushfire hazard in the landscape.	4.3	New

HEPBURN SHIRE	D15-20-014	Blampied - Blampied-Kooroocheang Rd	FRB	To modify the vegetation Structure across the planned area to assist the Promotion of Tall Mixed Forest.	12.0	
HEPBURN SHIRE	D15-20-037	Broomfield - Wrigleys and Pascoes Rd	FRB	To provide the highest level of localised protection to human life, property and community assets identified as highly valued including Wrigleys Reserve.	1.2	
HEPBURN SHIRE	D15-20-018	Glenlyon - Irving Road	FRB	To develop fuel reduced areas of sufficient width and continuity to reduce the speed and intensity of bushfires.	10.0	
HEPBURN SHIRE	D15-20-038	Kingston - Stag Rd	FRB	To provide the highest level of localised protection to human life, property and community assets identified as highly valued including township of Allendale.	3.1	
HEPBURN SHIRE	D15-19-041	Wheatsheaf - Sharpes Lane Burn One	TO	To provide bushfire protection by reducing overall fuel hazard and bushfire hazard in the landscape.	56.0	
HEPBURN SHIRE	D15-19-036	Coomoora - Kangaroo Drive Burn Three	FRB	To provide the highest level of localised protection to human life, property and community assets identified as highly valued including Coomoora and Wheatsheaf areas.	1.6	
HEPBURN SHIRE	D15-19-013	Newlyn - Skilbecks Rd	FRB	To provide bushfire protection by reducing overall fuel hazard and bushfire hazard in the landscape.	1.4	
HEPBURN SHIRE	D15-21-018	Newlyn - Mt Prospect	FRB	To provide bushfire protection by reducing overall fuel hazard and bushfire hazard in the landscape.	1.3	
HEPBURN SHIRE	D15-21-024	Wheatsheaf - 90 Whitegum Drive	TO	To provide the highest level of localised protection to human life, property and community assets identified as highly valued including 90 Whitegum Drive.	2.0	New
HEPBURN SHIRE	D15-21-025	Wheatsheaf - 30 Wallaby Road	TO	To provide the highest level of localised protection to human life, property and community assets identified as highly valued including 30 Wallaby Road.	1.7	New
HEPBURN SHIRE	D15-21-040	Wheatsheaf - 255 Whitegum Drive Candling	FRB	To provide the highest level of localised protection to human life, property and community assets identified as highly valued including 90 Whitegum Drive.	1.7	New
HEPBURN SHIRE	D15-19-044	Coomoora - Kangaroo Drive Burn Six	FRB	To provide the highest level of localised protection to human life, property and community assets identified as highly valued including Wheatsheaf.	3.6	
HEPBURN SHIRE	D15-19-053	Wheatsheaf - Mary Road Burn Two	FRB	To provide bushfire protection by reducing overall fuel hazard and bushfire hazard in the landscape.	0.4	
MOORABOOL SHIRE	D15-20-027	Blackwood - Blackwood Cemetery	FRB	To provide bushfire protection by reducing overall fuel hazard and bushfire hazard in the landscape.	1.4	
MOORABOOL SHIRE	D15-19-032	Ballan - Ballan Strategic Breaks 2	FRB	To develop fuel reduced areas of sufficient width and continuity to reduce the speed and intensity of bushfires.	5.9	
MOORABOOL SHIRE	D15-19-028	Elaine - Elaine Rail Corridor	FRB	To develop fuel reduced areas of sufficient width and continuity to reduce the speed and intensity of bushfires.	45.9	
MOORABOOL SHIRE	D15-20-032	Parwan - Bacchus Marsh-Werribee Rd or Ballan Rd	FRB	To provide bushfire protection by reducing overall fuel hazard and bushfire hazard in the landscape.	8.3	
MOORABOOL SHIRE	D15-19-002	Greendale - Bradys Lane	FRB	To develop fuel reduced areas of sufficient width and continuity to reduce the speed and intensity of bushfires.	4.8	
MOORABOOL SHIRE	D15-19-049	Mount Wallace - Ballan-Meredith Rd and Bungeeltap South Rd	FRB	To develop fuel reduced areas of sufficient width and continuity to reduce the speed and intensity of bushfires.	38.3	
MOORABOOL SHIRE	D15-20-028	Mount Wallace - Glenmore Rd west	FRB	To provide bushfire protection by reducing overall fuel hazard and bushfire hazard in the landscape.	9.9	
MOORABOOL SHIRE	D15-20-031	Parwan - Parwan Rail	FRB	To provide bushfire protection by reducing overall fuel hazard and bushfire hazard in the landscape.	1.9	

MOORABOOL SHIRE	D15-21-019	Ballan - Ingliston Road and Rail	FRB	To provide bushfire protection by reducing overall fuel hazard and bushfire hazard in the landscape.	21.2	
MOORABOOL SHIRE	D15-21-020	Parwan - Glenmore and Nerowie Roads	FRB	To provide bushfire protection by reducing overall fuel hazard and bushfire hazard in the landscape.	37.9	New
MOORABOOL SHIRE	D15-20-029	Mount Wallace - Smiths Lane	FRB	To provide bushfire protection by reducing overall fuel hazard and bushfire hazard in the landscape.	4.9	
MOORABOOL SHIRE	D15-21-027	Greendale - Dales Creek	FRB	To provide the highest level of localised protection to human life, property and community assets identified as highly valued including Dales Creek Avenue.	2.0	
MOORABOOL SHIRE	D15-21-042	Greendale - Coles Lane	FRB	To provide bushfire protection by reducing overall fuel hazard and bushfire hazard in the landscape.	4.4	New
MOORABOOL SHIRE	D15-21-048	Myrniong - Myrniong Strategic Breaks	FRB	To provide bushfire protection by reducing overall fuel hazard and bushfire hazard in the landscape.	20.0	

CFA Lead District D15 Planned Burns 2022/23

Local Government Area	Burn Number	Burn Name	Burn Type	Land Management Objective	Planned Burn Size (ha)	New Burn
BALLARAT CITY	D15-21-017	Creswick - Blackmore Road Sulky	FRB	To provide the highest level of localised protection to human life, property and community assets identified as highly valued including surrounding residential properties	1.9	
BALLARAT CITY	D15-19-059	Ballarat - Victoria Park	FRB	To provide the highest level of localised protection to human life, property and community assets identified as highly valued including surrounding residential properties.	23.6	

CFA Lead District D15 Planned Burns 2023/24

Local Government Area	Burn Number	Burn Name	Burn Type	Land Management Objective	Planned Burn Size (ha)	New Burn
BALLARAT CITY	D15-19-006	Ballarat East - 205 York Street	FRB	To provide the highest level of localised protection to human life, property and community assets identified as highly valued including Residents around the York Street Area..	0.1	New

SCHEDULE 1: CFA LEAD DISTRICT D16 – PLANNED BURNING

* - burns are serviced by the District 5 VMO and delivered using cross District resources

CFA Lead District D16 Planned Burns 2021/22

Local Government Area	Burn Number	Burn Name	Burn Type	Land Management Objective	Planned Burn Size (ha)	New Burn
ARARAT RURAL CITY	D16-19-010	Bornes Hill - Maroona-Glenthompson Rd	FRB	To develop fuel reduced areas of sufficient width and continuity to reduce the speed and intensity of bushfires.	15.3	
ARARAT RURAL CITY	D16-19-012	Lake Bolac - Mortlake-Ararat Rd North	FRB	To develop fuel reduced areas of sufficient width and continuity to reduce the speed and intensity of bushfires.	22.0	
ARARAT RURAL CITY	D16-19-013	Lake Bolac - Mortlake-Ararat Rd South	FRB	To develop fuel reduced areas of sufficient width and continuity to reduce the speed and intensity of bushfires.	14.2	
ARARAT RURAL CITY	D16-19-014	Lake Bolac - Lake Bolac Foreshore	FRB	To develop fuel reduced areas of sufficient width and continuity to reduce the speed and intensity of bushfires.	38.7	
ARARAT RURAL CITY	D16-19-016	Maroona - Melbourne-Adelaide Railway Line ARTC	FRB	To develop fuel reduced areas of sufficient width and continuity to reduce the speed and intensity of bushfires.	3.9	
ARARAT RURAL CITY	D16-19-017	Maroona - Mortlake-Ararat Rd	FRB	To develop fuel reduced areas of sufficient width and continuity to reduce the speed and intensity of bushfires.	14.2	
ARARAT RURAL CITY	D16-19-019	Wickliffe - Willaura-Wickliffe Rd	FRB	To develop fuel reduced areas of sufficient width and continuity to reduce the speed and intensity of bushfires.	30.2	
ARARAT RURAL CITY	D16-19-022	Willaura - Mortlake-Ararat Rd	FRB	To develop fuel reduced areas of sufficient width and continuity to reduce the speed and intensity of bushfires.	28.7	
ARARAT RURAL CITY	D16-19-024	Moyston - School Creek Reserve	FRB	To provide bushfire protection by reducing overall fuel hazard and bushfire hazard in the landscape.	4.7	
ARARAT RURAL CITY	D16-19-028	Pura Pura - ARTC Rail Line	FRB	To develop fuel reduced areas of sufficient width and continuity to reduce the speed and intensity of bushfires.	30.2	
ARARAT RURAL CITY	D16-19-029	Tattoon - ARTC Tattoon Rail	FRB	To develop fuel reduced areas of sufficient width and continuity to reduce the speed and intensity of bushfires.	10.0	

ARARAT RURAL CITY	D16-19-030	Wickliffe Township Block	FRB	To provide the highest level of localised protection to human life, property and community assets identified as highly valued including the community of Wickliffe.	9.5	
ARARAT RURAL CITY	D16-19-043	Maroona - Maroona-Glenhompson Rd	FRB	To develop fuel reduced areas of sufficient width and continuity to reduce the speed and intensity of bushfires.	7.7	
ARARAT RURAL CITY	D16-19-045	Wickliffe - Glenelg Highway	FRB	To develop fuel reduced areas of sufficient width and continuity to reduce the speed and intensity of bushfires.	15.0	
ARARAT RURAL CITY	D16-19-046	Ararat - Western Hwy south side	FRB	To develop fuel reduced areas of sufficient width and continuity to reduce the speed and intensity of bushfires.	5.3	New
ARARAT RURAL CITY	D16-19-053	Pura Pura - Darlington - Carranballac Road	FRB	To develop fuel reduced areas of sufficient width and continuity to reduce the speed and intensity of bushfires.	11	
ARARAT RURAL CITY	D16-20-001	Pura Pura - Darlington-Carranballac Rd North	FRB	To provide the highest level of localised protection to human life, property and community assets identified as highly valued including the township of Pura Pura.	5.4	
ARARAT RURAL CITY	D16-20-003	Ararat - Hadland St Reseve	FRB	To develop fuel reduced areas of sufficient width and continuity to reduce the speed and intensity of bushfires.	4.7	
ARARAT RURAL CITY	D16-20-004	Bornes Hill - Moyston-Dunkeld Rd	FRB	To develop fuel reduced areas of sufficient width and continuity to reduce the speed and intensity of bushfires.	19.4	
ARARAT RURAL CITY	D16-20-007	Nerrin Nerrin - Woorndoo-Streatham Rd	FRB	To develop fuel reduced areas of sufficient width and continuity to reduce the speed and intensity of bushfires.	20.5	
ARARAT RURAL CITY	D16-20-008	Streatham - Streatham Township Burns	FRB	To provide the highest level of localised protection to human life, property and community assets identified as highly valued including the township of Streatham.	2.8	
ARARAT RURAL CITY	D16-20-009	Wickliffe - Chatsworth-Wickliffe Rd	FRB	To develop fuel reduced areas of sufficient width and continuity to reduce the speed and intensity of bushfires.	26.1	
ARARAT RURAL CITY	D16-20-010	Willaura - Maroona-Glenhompson Rd	FRB	To develop fuel reduced areas of sufficient width and continuity to reduce the speed and intensity of bushfires.	81.9	
ARARAT RURAL CITY	D16-20-011	Willaura - Willaura-Wickliffe Rd	FRB	To develop fuel reduced areas of sufficient width and continuity to reduce the speed and intensity of bushfires.	16.3	
ARARAT RURAL CITY	D16-20-012	Lake Bolac - Lake Bolac Foreshore north of Cemetery	FRB	To provide bushfire protection by reducing overall fuel hazard and bushfire hazard in the landscape.	9.6	

ARARAT RURAL CITY	D16-20-013	Lake Bolac - Glenelg Highway	FRB	To provide bushfire protection by reducing overall fuel hazard and bushfire hazard in the landscape.	5.8	
ARARAT RURAL CITY	D16-20-014	Moyston - Flavell Rd	FRB	To provide bushfire protection by reducing overall fuel hazard and bushfire hazard in the landscape.	0.7	
ARARAT RURAL CITY	D16-20-015	Moyston - Moyston-Rocky Point Rd	FRB	To provide bushfire protection by reducing overall fuel hazard and bushfire hazard in the landscape.	0.3	
ARARAT RURAL CITY	D16-20-016	Willaura - Yarram Gap Rd	FRB	To provide bushfire protection by reducing overall fuel hazard and bushfire hazard in the landscape.	16.6	
ARARAT RURAL CITY	D16-20-017	Yalla-Y-Poora - Mount William Rd south	FRB	To provide bushfire protection by reducing overall fuel hazard and bushfire hazard in the landscape.	2.4	
ARARAT RURAL CITY	D16-20-018	Yalla Y Poora - Mount William Rd north	FRB	To provide bushfire protection by reducing overall fuel hazard and bushfire hazard in the landscape.	6.0	
ARARAT RURAL CITY	D16-20-025	Langi Logan - Quamby Rd	FRB	To develop fuel reduced areas of sufficient width and continuity to reduce the speed and intensity of bushfires.	26.8	
ARARAT RURAL CITY	D16-20-039	Lake Bolac - Knights Rd	FRB	To provide bushfire protection by reducing overall fuel hazard and bushfire hazard in the landscape.	5.2	
ARARAT RURAL CITY	D16-20-042	Willaura - Railway Line	FRB	To develop fuel reduced areas of sufficient width and continuity to reduce the speed and intensity of bushfires.	4.0	
ARARAT RURAL CITY	D16-21-007	Moyston - Moyston Township Burns	FRB	To provide the highest level of localised protection to human life, property and community assets identified as highly valued including Moyston township.	24.0	
ARARAT RURAL CITY	D16-21-014	Westmere - Westmere ARTC Line	FRB	To provide bushfire protection by reducing overall fuel hazard and bushfire hazard in the landscape.	12.4	
CORANGAMITE SHIRE	D16-21-020	Skipton - Rokewood-Skipton Rd	FRB	To provide bushfire protection by reducing overall fuel hazard and bushfire hazard in the landscape.	34.0	
MOYNE SHIRE	D16-19-023	Woorndoo - Mortlake-Ararat Rd	FRB	To develop fuel reduced areas of sufficient width and continuity to reduce the speed and intensity of bushfires.	32.6	
MOYNE SHIRE	D16-20-005	Dundonnell - Woorndoo-Streatham Rd	FRB	To develop fuel reduced areas of sufficient width and continuity to reduce the speed and intensity of bushfires.	60.0	

MOYNE SHIRE	D16-20-027	Dundonnell - Woorndoo Dundonnell Rd	FRB	To provide bushfire protection by reducing overall fuel hazard and bushfire hazard in the landscape.	39.7	
MOYNE SHIRE	D16-20-028	Dundonnell - Dundonnell Derrinallum Rd	FRB	To provide bushfire protection by reducing overall fuel hazard and bushfire hazard in the landscape.	56.5	
MOYNE SHIRE	D16-20-029	Woorndoo - Woorndoo Chatsworth Rd*	FRB	To develop fuel reduced areas of sufficient width and continuity to reduce the speed and intensity of bushfires.	55.2	
MOYNE SHIRE	D16-20-030	Woorndoo - Hexham Woorndoo Rd*	FRB	To develop fuel reduced areas of sufficient width and continuity to reduce the speed and intensity of bushfires.	69.8	
MOYNE SHIRE	D16-20-031	Woorndoo Woorndoo Dundonnell Rd*	FRB	To develop fuel reduced areas of sufficient width and continuity to reduce the speed and intensity of bushfires.	49.0	
MOYNE SHIRE	D16-20-033	Woorndoo - Chatsworth Bolac Rd*	FRB	To develop fuel reduced areas of sufficient width and continuity to reduce the speed and intensity of bushfires.	8.2	
MOYNE SHIRE	D16-20-034	Woorndoo – Common*	FRB	To provide bushfire protection by reducing overall fuel hazard and bushfire hazard in the landscape.	3.5	
MOYNE SHIRE	D16-20-036	Chatsworth - Hamilton Chatsworth Rd*	FRB	To provide bushfire protection by reducing overall fuel hazard and bushfire hazard in the landscape.	55.0	
MOYNE SHIRE	D16-20-037	Chatsworth - Caramut Glenthompson Rd*	FRB	To provide bushfire protection by reducing overall fuel hazard and bushfire hazard in the landscape.	13.7	
MOYNE SHIRE	D16-20-038	Chatsworth - Woorndoo Chatsworth Rd*	FRB	To provide bushfire protection by reducing overall fuel hazard and bushfire hazard in the landscape.	33.2	
MOYNE SHIRE	D16-20-040	Chatsworth - Hexham Chatsworth Rd*	FRB	To provide bushfire protection by reducing overall fuel hazard and bushfire hazard in the landscape.	49.4	
MOYNE SHIRE	D16-20-041	Chatsworth - Caramut Chatsworth Rd*	FRB	To provide bushfire protection by reducing overall fuel hazard and bushfire hazard in the landscape.	80.4	
MOYNE SHIRE	D16-21-008	Chatsworth - Chatsworth Wickliffe Road*	FRB	To develop fuel reduced areas of sufficient width and continuity to reduce the speed and intensity of bushfires.	29.9	
MOYNE SHIRE	D16-21-009	Woorndoo - Mortlake Ararat Road South*	FRB	To develop fuel reduced areas of sufficient width and continuity to reduce the speed and intensity of bushfires.	53.3	
MOYNE SHIRE	D16-21-010	Woorndoo - Disused Road*	FRB	To develop fuel reduced areas of sufficient width and continuity to reduce the speed and intensity of bushfires.	5.8	

MOYNE SHIRE	D16-21-011	Woorndoo - Bolac Plains Road*	FRB	To develop fuel reduced areas of sufficient width and continuity to reduce the speed and intensity of bushfires.	40.3	
MOYNE SHIRE	D16-21-015	Pura Pura - Darlington Carranballac Road South*	FRB	To develop fuel reduced areas of sufficient width and continuity to reduce the speed and intensity of bushfires.	71.1	
NORTHERN GRAMPIANS SHIRE	D16-19-034	Glenorchy - Glenorchy Railway	FRB	To develop fuel reduced areas of sufficient width and continuity to reduce the speed and intensity of bushfires.	2.3	
NORTHERN GRAMPIANS SHIRE	D16-19-035	Glenorchy - Glenorchy Oval	FRB	To develop fuel reduced areas of sufficient width and continuity to reduce the speed and intensity of bushfires.	1.3	
NORTHERN GRAMPIANS SHIRE	D16-19-038	Navarre - Disused Tulkara Railyard	FRB	To develop fuel reduced areas of sufficient width and continuity to reduce the speed and intensity of bushfires.	5.9	
NORTHERN GRAMPIANS SHIRE	D16-19-050	Navarre - Sports Association Reserve	FRB	To develop fuel reduced areas of sufficient width and continuity to reduce the speed and intensity of bushfires.	5.3	
NORTHERN GRAMPIANS SHIRE	D16-20-002	Joel Joel - Roadside Burns	FRB	To provide the highest level of localised protection to human life, property and community assets identified as highly valued including the communities of Greens Creek, Joel Joel, Landsborough West and Joel South.	94.8	
NORTHERN GRAMPIANS SHIRE	D16-21-016	Callawadda - Willaring Road	FRB	To provide bushfire protection by reducing overall fuel hazard and bushfire hazard in the landscape.	8.4	
NORTHERN GRAMPIANS SHIRE	D16-21-017	Callawadda - Donald-Stawell Rd	FRB	To provide bushfire protection by reducing overall fuel hazard and bushfire hazard in the landscape.	2.6	
NORTHERN GRAMPIANS SHIRE	D16-21-018	Halls Gap - Grampians Rd NE Halls Gap	FRB	To provide the highest level of localised protection to human life, property and community assets identified as highly valued including Grampians Road, Halls Gap.	4.11	
PYRENEES SHIRE	D16-20-022	Skipton - Beaufort-Skipton Rd	FRB	To provide bushfire protection by reducing overall fuel hazard and bushfire hazard in the landscape.	21.2	
PYRENEES SHIRE	D16-20-024	Snake Valley - Streatham-Carngham Rd	FRB	To provide bushfire protection by reducing overall fuel hazard and bushfire hazard in the landscape.	14.7	
PYRENEES SHIRE	D16-21-005	Skipton - Stockyard Hill Rd	FRB	To provide bushfire protection by reducing overall fuel hazard and bushfire hazard in the landscape.	7.3	
PYRENEES SHIRE	D16-21-006	Snake Valley - Ballarat-Carngham Rd	FRB	To provide bushfire protection by reducing overall fuel hazard and bushfire hazard in the landscape.	8.7	

SCHEDULE 1: CFA LEAD DISTRICT D17 – PLANNED BURNING

CFA Lead District D17 Planned Burns 2021/22

Local Government Area	Burn Number	Burn Name	Burn Type	Land Management Objective	Planned Burn Size (ha)	New Burn
HINDMARSH SHIRE	D17-19-001	Dimboola - Patterson Street	FRB	To provide the highest level of localised protection to human life, property and community assets identified as highly valued including residential properties.	3.6	
HINDMARSH SHIRE	D17-19-020	Rainbow - Rainbow Transfer Station	FRB	To provide the highest level of localised protection to human life, property and community assets identified as highly valued including the Rainbow Transfer Station.	0.6	
HINDMARSH SHIRE	D17-19-021	Rainbow - Wheatlands Road West	FRB	To provide the highest level of localised protection to human life, property and community assets identified as highly valued including the township of Rainbow.	14.9	
HINDMARSH SHIRE	D17-19-044	Winiam - Little Desert Nature Lodge	FRB	To modify the vegetation Abundance across the planned area to assist the Promotion of Heathland (sands).	7.6	
HINDMARSH SHIRE	D17-20-003	Jeparit - Disused Yanac-Jeparit Railway	FRB	To provide the highest level of localised protection to human life, property and community assets identified as highly valued including the Disused Yanac-Jeparit Railway.	6.6	
HINDMARSH SHIRE	D17-20-004	Nhill - Transfer Station	FRB	To provide the highest level of localised protection to human life, property and community assets identified as highly valued including the Nhill Transfer Station.	11.1	
HINDMARSH SHIRE	D17-20-020	Dimboola - Collard Road	FRB	To modify the vegetation Abundance across the planned area to assist the Promotion of native grass in the area and as part of off sets for the recent rail corridor upgrades.	2.9	
HINDMARSH SHIRE	D17-20-021	Nhill - Secondary College	FRB	To provide the highest level of localised protection to human life, property and community assets identified as highly valued including residential properties.	0.5	
HINDMARSH SHIRE	D17-21-008	Diapur - Diapur Rail Yards	FRB	To develop fuel reduced areas of sufficient width and continuity to reduce the speed and intensity of bushfires.	9.7	
HINDMARSH SHIRE	D17-21-009	Dimboola - Dimboola Rail Yards	FRB	To provide the highest level of localised protection to human life, property and community assets identified as highly valued including Dimboola township.	7.5	
HINDMARSH SHIRE	D17-21-010	Dimboola - Dimboola Grain Bunker	FRB	To provide the highest level of localised protection to human life, property and community assets identified as highly valued including Dimboola township.	9.0	
HINDMARSH SHIRE	D17-21-011	Nhill - McKenzie Ave	FRB	To provide the highest level of localised protection to human life, property and community assets identified as highly valued including Nhill township.	3.3	

HINDMARSH SHIRE	D17-21-012	Nhill - Park Street	FRB	To provide the highest level of localised protection to human life, property and community assets identified as highly valued including Nhill township.	3.6	
HINDMARSH SHIRE	D17-21-013	Nhill - Luv a Duck Farm	FRB	To provide bushfire protection by reducing overall fuel hazard and bushfire hazard in the landscape.	5.7	
HINDMARSH SHIRE	D17-21-014	Nhill - Nhill Racecourse	FRB	To provide the highest level of localised protection to human life, property and community assets identified as highly valued including Nhill racecourse.	24.1	
HINDMARSH SHIRE	D17-21-015	Yanac - Yanac Railyards	FRB	To provide the highest level of localised protection to human life, property and community assets identified as highly valued including Yanac township.	7.3	
HINDMARSH SHIRE	D17-21-026	Dimboola - Snape Reserve	TO	To provide the highest level of localised protection to human life, property and community assets identified as highly valued including Dimboola township.	734.7	New
HINDMARSH SHIRE	D17-21-027	Dimboola - Faith Street	FRB	To provide the highest level of localised protection to human life, property and community assets identified as highly valued including Dimboola township.	1.3	New
HINDMARSH SHIRE	D17-21-028	Dimboola - Swallows Lane	FRB	To provide the highest level of localised protection to human life, property and community assets identified as highly valued including Dimboola township.	1.1	New
HINDMARSH SHIRE	D17-21-029	Dimboola - Ellerman Street	FRB	To develop fuel reduced areas of sufficient width and continuity to reduce the speed and intensity of bushfires.	0.3	New
HINDMARSH SHIRE	D17-21-030	Nhill - Nhill-Netherby Road	FRB	To provide bushfire protection by reducing overall fuel hazard and bushfire hazard in the landscape.	1.3	New
HINDMARSH SHIRE	D17-21-031	Nhill - Nhill Rail Line	FRB	To provide the highest level of localised protection to human life, property and community assets identified as highly valued including Nhill township.	0.7	New
HINDMARSH SHIRE	D17-21-032	Rainbow - Albacutya Road	FRB	To provide bushfire protection by reducing overall fuel hazard and bushfire hazard in the landscape.	16.8	New
HINDMARSH SHIRE	D17-21-033	Rainbow - Park Street	FRB	To provide the highest level of localised protection to human life, property and community assets identified as highly valued including Rainbow township.	3.0	New
HINDMARSH SHIRE	D17-21-034	Rainbow - Yaapeet-Dimboola Railway	FRB	To provide the highest level of localised protection to human life, property and community assets identified as highly valued including Rainbow township.	20.1	
HINDMARSH SHIRE	D17-21-046	Dimboola - High Street	FRB	To provide the highest level of localised protection to human life, property and community assets identified as highly valued including Dimboola township.	3.5	
HORSHAM RURAL CITY	D17-19-053	Dooen - Railway Line	FRB	To develop fuel reduced areas of sufficient width and continuity to reduce the speed and intensity of bushfires.	4.1	
HORSHAM RURAL CITY	D17-20-001	Horsham - Railway	FRB	To develop fuel reduced areas of sufficient width and continuity to reduce the speed and intensity of bushfires.	6.4	
HORSHAM RURAL CITY	D17-20-014	Clear Lake - Clear Lake Strategic Breaks	FRB	To provide bushfire protection by reducing overall fuel hazard and bushfire hazard in the landscape.	93.9	

HORSHAM RURAL CITY	D17-20-023	Vectis – Asplins Road	FRB	To provide bushfire protection by reducing overall fuel hazard and bushfire hazard in the landscape.	2.3	
HORSHAM RURAL CITY	D17-21-004	Horsham - Henty Highway - Horsham Rail east side	FRB	To develop fuel reduced areas of sufficient width and continuity to reduce the speed and intensity of bushfires.	7.6	
HORSHAM RURAL CITY	D17-21-005	Jung - Jung ARTC Rail Line and Yards	FRB	To provide bushfire protection by reducing overall fuel hazard and bushfire hazard in the landscape.	25.7	
HORSHAM RURAL CITY	D17-21-018	Vectis - Remlaw Rd Rail Reserve	FRB	To provide bushfire protection by reducing overall fuel hazard and bushfire hazard in the landscape.	34.0	
HORSHAM RURAL CITY	D17-21-020	Telangatuk East - Hamilton-Natimuk Hwy and Kanagulk Rail Siding	FRB	To provide bushfire protection by reducing overall fuel hazard and bushfire hazard in the landscape.	26.4	
HORSHAM RURAL CITY	D17-21-045	Laharum - Northern Grampians Rd - 3 sites	FRB	To provide bushfire protection by reducing overall fuel hazard and bushfire hazard in the landscape.	6.3	
HORSHAM RURAL CITY	D17-21-048	Brimpaen - Brimpaen-Laharum Road	FRB	To provide bushfire protection by reducing overall fuel hazard and bushfire hazard in the landscape.	11.0	
SOUTHERN GRAMPIANS SHIRE	D17-21-001	Glenisla - Andersons Rd	FRB	To develop fuel reduced areas of sufficient width and continuity to reduce the speed and intensity of bushfires.	3.0	
WEST WIMMERA SHIRE	D17-18-005	Edenhope - Anderson Candling Burn	FRB	To provide the highest level of localised protection to human life, property and community assets identified as highly valued including -Protection from the Edenhope airfield and Anderson House. This will be a candling program.	2.0	
WEST WIMMERA SHIRE	D17-18-010	Chetwynd - Chetwynd Township Roads	FRB	To develop fuel reduced areas of sufficient width and continuity to reduce the speed and intensity of bushfires.	15.3	
WEST WIMMERA SHIRE	D17-19-012	Minimay - Bank of Australia Traditional Burn	TO	To modify the vegetation Abundance across the planned area to assist the Promotion of Heathland (sands).	56.7	
WEST WIMMERA SHIRE	D17-19-026	Douglas - Wombelano Rd	FRB	To develop fuel reduced areas of sufficient width and continuity to reduce the speed and intensity of bushfires.	28.9	
WEST WIMMERA SHIRE	D17-19-027	Harrow - Harrow Township Roads	FRB	To develop fuel reduced areas of sufficient width and continuity to reduce the speed and intensity of bushfires.	3.9	
WEST WIMMERA SHIRE	D17-19-036	Kaniva - Kaniva South	FRB	To provide bushfire protection by reducing overall fuel hazard and bushfire hazard in the landscape.	20.5	
WEST WIMMERA SHIRE	D17-19-040	Goroke - Edenhope-Goroke Rd	FRB	To develop fuel reduced areas of sufficient width and continuity to reduce the speed and intensity of bushfires.	10.6	
WEST WIMMERA SHIRE	D17-19-041	Minimay - Minimay Burn 1 - Kaniva-Edenhope Rd	FRB	To provide bushfire protection by reducing overall fuel hazard and bushfire hazard in the landscape.	112.9	
WEST WIMMERA SHIRE	D17-19-042	Apsley - Federation Corner	FRB	To provide the highest level of localised protection to human life, property and community assets identified as highly valued including the township of Apsley.	0.2	
WEST WIMMERA SHIRE	D17-19-043	Dergholm - Dergholm Township Burns	FRB	To provide the highest level of localised protection to human life, property and community assets identified as highly valued including Township of Dergholm.	6.3	
WEST WIMMERA SHIRE	D17-19-050	Connewirricoo - Harrow-Casterton Road	FRB	To provide the highest level of localised protection to human life, property and community assets identified as highly valued including Harrow - Casterton Road.	0.3	

WEST WIMMERA SHIRE	D17-19-051	Connewirricoo - Mooree Quarry	FRB	To provide the highest level of localised protection to human life, property and community assets identified as highly valued including Mooree Quarry.	1.4	
WEST WIMMERA SHIRE	D17-20-008	Douglas - Township Roads	FRB	To provide the highest level of localised protection to human life, property and community assets identified as highly valued including the Douglas Township.	61.5	
WEST WIMMERA SHIRE	D17-21-002	Apsley - Casterton-Apsley Rd	FRB	To provide the highest level of localised protection to human life, property and community assets identified as highly valued including Federation Square.	0.2	
WEST WIMMERA SHIRE	D17-21-016	Apsley - Apsley Racecourse and Wimmera Hwy	FRB	To provide the highest level of localised protection to human life, property and community assets identified as highly valued including Apsley township.	60.1	
WEST WIMMERA SHIRE	D17-21-017	Apsley - Apsley-Natimuk Rd and Recreation Reserve	FRB	To provide the highest level of localised protection to human life, property and community assets identified as highly valued including Apsley township.	3.3	
WEST WIMMERA SHIRE	D17-21-023	Poolajelo - Casterton-Apsley Rd	FRB	To provide bushfire protection by reducing overall fuel hazard and bushfire hazard in the landscape.	0.4	
WEST WIMMERA SHIRE	D17-21-036	Apsley - Benayeo Road	FRB	To develop fuel reduced areas of sufficient width and continuity to reduce the speed and intensity of bushfires.	4.1	New
WEST WIMMERA SHIRE	D17-21-039	Apsley - Racecourse Rd	FRB	To develop fuel reduced areas of sufficient width and continuity to reduce the speed and intensity of bushfires.	3.2	
WEST WIMMERA SHIRE	D17-21-040	Apsley - Private Property-Laidlaw St	FRB	To develop fuel reduced areas of sufficient width and continuity to reduce the speed and intensity of bushfires.		New
WEST WIMMERA SHIRE	D17-21-041	Apsley - Gibson St	FRB	To develop fuel reduced areas of sufficient width and continuity to reduce the speed and intensity of bushfires.	0.4	New
WEST WIMMERA SHIRE	D17-21-042	Goroke - Horsham-Carpolac disused Railway Line	FRB	To provide bushfire protection by reducing overall fuel hazard and bushfire hazard in the landscape.	5.0	
WEST WIMMERA SHIRE	D17-21-043	Minimay - Minimay Burn 2 - Kaniva Edenhope Rd	FRB	To provide bushfire protection by reducing overall fuel hazard and bushfire hazard in the landscape.	7.8	
WEST WIMMERA SHIRE	D17-21-044	Lillimur South - South Lillimur Rail Yards	FRB	To develop fuel reduced areas of sufficient width and continuity to reduce the speed and intensity of bushfires.	3.3	
YARRIAMBIACK SHIRE	D17-20-018	Warracknabeal - Warracknabeal Rail Yards	FRB	To develop fuel reduced areas of sufficient width and continuity to reduce the speed and intensity of bushfires.	3.6	
YARRIAMBIACK SHIRE	D17-21-025	Murtoa - Murtoa Rail Yards	FRB	To provide the highest level of localised protection to human life, property and community assets identified as highly valued including Murtoa township.	4.1	
YARRIAMBIACK SHIRE	D17-21-047	Minyip - Minyip Rail Burn	FRB	To provide the highest level of localised protection to human life, property and community assets identified as highly valued including Minyip township.	4.7	

SCHEDULE 2: CFA LEAD DISTRICT 15 – NON-BURNING FUEL TREATMENTS

CFA Lead District 15 Non-burning Fuel Treatments 2021/22

Local Government Area	Treatment Number	Treatment Name	Treatment Type	Land Management Objective	Treatment Size (ha)
Ballarat	D15-21-038	Mount Helen - Bergs Lane	MULCHING	To provide the highest level of localised protection to human life, property and community assets identified as highly valued including Bergs Lane, Mount Helen.	8.0
Ballarat	D15-21-039	Mount Helen - Fed Uni mulching	MULCHING	To provide the highest level of localised protection to human life, property and community assets identified as highly valued including Federation University.	6.3
Ballarat	D15-21-047	Warrenheip - Warrenheip Rail Line Mulching	MULCHING	To develop fuel reduced areas of sufficient width and continuity to reduce the speed and intensity of bushfires.	8.8
Hepburn	D15-21-029	Wheatsheaf - 5 Gays Road	MULCHING	To provide the highest level of localised protection to human life, property and community assets identified as highly valued including 5 Gays Road.	0.6
Hepburn	D15-21-030	Wheatsheaf - 100 Gays Road	MULCHING	To provide the highest level of localised protection to human life, property and community assets identified as highly valued including 100 Gays Road.	2.0
Hepburn	D15-21-031	Wheatsheaf - 60 Whitegum Drive	MULCHING	To provide the highest level of localised protection to human life, property and community assets identified as highly valued including 60 Whitegum Drive.	1.9
Hepburn	D15-21-032	Coomoora - 100 Kangaroo Drive	MULCHING	To provide the highest level of localised protection to human life, property and community assets identified as highly valued including 100 Kangaroo Drive.	4.0
Hepburn	D15-21-033	Coomoora - 60 Apple Tree Track	MULCHING	To provide the highest level of localised protection to human life, property and community assets identified as highly valued including 60 Apple Tree Track.	5.9
Hepburn	D15-21-034	Wheatsheaf - 210 Whitegum Drive	MULCHING	To provide the highest level of localised protection to human life, property and community assets identified as highly valued including 210 Whitegum Drive.	2.5
Hepburn	D15-21-035	Wheatsheaf - 255 Whitegum Drive	MULCHING	To provide the highest level of localised protection to human life, property and community assets identified as highly valued including 255 Whitegum Drive.	1.7
Hepburn	D15-21-036	Wheatsheaf - 368 Sharpes Lane	MULCHING	To provide the highest level of localised protection to human life, property and community assets identified as highly valued including 368 Sharpes Lane.	2.0
Hepburn	D15-21-037	Wheatsheaf - 185 Gays Road	MULCHING	To provide the highest level of localised protection to human life, property and community assets identified as highly valued including 185 Gays Road.	1.7

Glossary

This glossary provides information on terms contained within the body of this document and the schedules.

APB – Asset protection break; a form of strategic fuel break

BREA - Bushfire Risk Engagement Areas.

Burn Type – indicates the primary purpose of the burn.

Burn Number and Name– the unique identifier for each burn or planned fuel management activity.

Cross-tenure burn – a burn that covers both public and private land

Fire Management Zone (FMZ) – an area of public land in which fire is managed for specific asset, fuel and ECO objectives. Values included in this column can be APZ - Asset Protection Zone; BMZ – Bushfire Moderation Zone; LMZ - Landscape Management Zone, PBEZ – Planned Burn Exclusion Zone; or, NZ -Not Zoned.

Forest Fire Management Victoria (FFMVic) – FFMVic consists of specialist staff from DELWP, Parks Victoria, Melbourne Water and VicForests.

Land Management Objective - identifies the desired land management outcome(s) of the burn.

Lead Agency - The Lead Agency for a planned burn is determined by the burns distance from public land. Within 1.5 km of public land, planned burning on non-public land falls within DELWP’s legislative scope and DELWP can choose to be the Lead Agency. If it is outside 1.5 km of public land, DELWP is unable to undertake the planned burn; instead, the CFA will be the Lead Agency to undertake that burn.

Local Government Area (LGA) – the municipality in which most of the fuel management activity is located.

Location – a direction and distance of the planned burn from the nearest major township/locality.

LPB – Landscape protection break; a form of strategic fuel break

Planned Burns - Planned burning is one of FFMVic and CFA’s most important fire prevention activities. It involves the controlled application of fire during periods of lower fire risk, to achieve one of three main purposes: fuel reduction (FRB), ecological (ECO) management and forest regeneration (REG).

Approved burns in this year’s Plan will require a range of preparation works to make the planned area ready to ignite when the weather and other conditions are right. Preparation works may include, brushing up or grading of existing boundaries and internal tracks, management of hazardous trees, the construction and preparation of boundary and control lines with machinery and pest plant controls. The preparation works will have on-site inspections which will assess the surrounding assets and planned burn objectives.

Private Property Burn – burn that occurs wholly on private land.

Planned Burn Size – the maximum area of the fuel management activity measured in hectares (ha), including areas specifically excluded from disturbance.

Residual Risk - The impacts on life and property that remain after planned burning and bushfires, we call the 'residual risk'. If residual risk is 100 per cent – there has been no fire in the landscape and no fuel reduced and we are at maximum risk where fires will spread and impact. If residual risk is at 70 per cent – the impacts to life and property will be reduced by about a third.

Strategic Fuelbreak: A strategic fuelbreak is a strip of land where vegetation has been modified to reduce the amount of fuel available to burn during a bushfire.

New Burn– ‘NEW’ = New burn did not appear on last year’s JFMP. *Blank box* = Not a new burn. Burn was approved in the previous JFMP but has not been carried out, it is included in this JFMP and may be conducted at any time.

Non-Burning Fuel Treatments – Non-burning fuel treatments such as the maintenance and construction of fire control lines, fire access tracks, fuel breaks, fire infrastructure and other fuel management activities are required to support the planned burning program. Treatments to achieve these works can include slashing, pruning, chemical application (in alignment with safety standards), grazing or other operations (such as ploughing, mulching or rolling) that may be more appropriate or practical in certain areas. For example, fuel on small areas or blocks located within townships may be treated mechanically, where burning is impractical. These methods may also be more suitable in certain vegetation types.

