

**Joint Fuel Management Program  
2018/19 – 2020/2021**



Loddon Mallee Region  
Incorporating CFA North West  
Region



## Acknowledgements

Thank you to members of the CFA North West team, and DELWP Regional Forest and Fire Planning, Regional Fuel Management, Mallee and Murray Goldfields District teams for all their input.

© The State of Victoria Department of Environment, Land, Water and Planning 2018



This work is licensed under a Creative Commons Attribution 4.0 International licence. You are free to re-use the work under that licence, on the condition that you credit the State of Victoria as author. The licence does not apply to any images, photographs or branding, including the Victorian Coat of Arms, the Victorian

Government logo and the Department of Environment, Land, Water and Planning (DELWP) logo. To view a copy of this licence, visit <http://creativecommons.org/licenses/by/4.0/>

ISBN 978-1-76077-256-7(pdf/online/MS/word)

## Disclaimer

This publication may be of assistance to you but the State of Victoria and its employees do not guarantee that the publication is without flaw of any kind or is wholly appropriate for your particular purposes and therefore disclaims all liability for any error, loss or other consequence which may arise from you relying on any information in this publication.

## Accessibility

If you would like to receive this publication in an alternative format, please telephone the DELWP Customer Service Centre on 136186, email [customer.service@delwp.vic.gov.au](mailto:customer.service@delwp.vic.gov.au) or via the National Relay Service on 133 677 [www.relayservice.com.au](http://www.relayservice.com.au). This document is also available on the internet at [www.delwp.vic.gov.au](http://www.delwp.vic.gov.au).

# Contents

<b>Foreword .....</b>	<b>4</b>
<b>Purpose and objectives of the Loddon Mallee Region Joint Fuel Management Program .....</b>	<b>5</b>
<b>Purpose.....</b>	<b>5</b>
<b>Objective.....</b>	<b>6</b>
Strategic Bushfire Management Planning .....	6
Bushfire Risk Reduction .....	7
Working with communities .....	8
Maintaining and enhancing Ecosystem Resilience.....	9
Other objectives specific to the Loddon Mallee Region .....	11
<b>Endorsement .....</b>	<b>12</b>
<b>Approval .....</b>	<b>12</b>
<b>Viewing the Loddon Mallee Joint Fuel Management Program .....</b>	<b>12</b>
<b>How to become involved in the Joint Fuel Management Program.....</b>	<b>13</b>
<b>Appendix (i): Schedules of Activities.....</b>	<b>14</b>
DELWP LEAD AGENCY MALLEE DISTRICT SCHEDULE .....	14
DELWP LEAD AGENCY MURRAY GOLDFIELDS DISTRICT SCHEDULE.....	22
CFA LEAD AGENCY DISTRICT 2 SCHEDULE .....	35
CFA LEAD AGENCY DISTRICT 18 SCHEDULE .....	40
CFA LEAD AGENCY DISTRICT 20 SCHEDULE .....	43
<b>Glossary .....</b>	<b>48</b>

# Foreword

In 2015, the Victorian Government set out a new approach to reducing the risk of bushfire in Victoria called *Safer Together*. *Safer Together* outlines an approach to reducing the risk of bushfires to Victorian communities, which focuses on how effective our actions are in reducing risk. It aims for a more integrated approach across public and private land.

Working together, FFMVic\* and the Country Fire Authority (CFA) has developed this first Joint Fuel Management Program which covers the Loddon Mallee DELWP Region and North West CFA Region. It demonstrates our commitment to working more closely to deliver the best bushfire risk reduction outcomes for Victorians. It recognises that bushfire risk occurs across all land.

The Joint Fuel Management Program (JFMP) is compiled to achieve an integrated and risk-focused fuel management program across public and private land. It is designed to implement long-term strategic bushfire management strategies that outline how we will manage the risk of bushfires for the protection of life and property on public and private land, while maintaining and improving natural ecosystems.

Fuel management is recognised as one of the most effective ways to reduce the impacts of bushfires to communities and the environment.

This JFMP has been shaped by a variety of information, such as risk-based planning detailed within our strategic bushfire management plans, specialist input from FFMVic, CFA staff and key industries, as well as knowledge from local communities, including Traditional Owners and key stakeholders.

We have identified planned burns across all land tenures. However, for this first JFMP, only private property burns that are a direct risk reduction benefit, are high profile or where a community need is identified, are included. All other CFA planned burns which are not listed in this document, will be added to the JFMP map over time so the public can see the complete fuel management program from all agencies. In the future, burns will be planned with increasing collaboration, as we continue to work closely together.

All CFA planned burns are documented in Municipal Fire Management Plans held by the relevant local government authority. Some Municipal Fire Management Plans also include strategic fuel breaks, works required for the maintenance of fire access roads and other roadside and railway burns.

The Joint Fuel Management Program (JFMP) replaces the Department of Environment, Land, Water and Planning's (DELWP) Fire Operation Plan (FOP).

Based on feedback and local knowledge from communities and key stakeholders, we will review and update the JFMP each year. We may make changes to burns or other fuel management activities. Our highest priority however, in carrying out fuel management activities is always the need to reduce the impact of bushfires on life and property.

We would like to acknowledge this as a significant milestone for *Safer Together* and recognise the work that has been put into developing this first Joint Fuel Management Plan, both by FFMVic staff, CFA and local communities. We encourage your continued input to ensure our plans protect those assets and values which are important to all Victorians.



**Scott Falconer**

Assistant Chief Fire Officer DELWP, Loddon Mallee Region

\* Forest Fire Management Victoria (FFMVic) – is the organisation that delivers services to achieve DELWP's legislated responsibilities. It consists of specialist staff from DELWP, Parks Victoria, Melbourne Water and VicForests.

# Purpose and objectives of the Loddon Mallee Region Joint Fuel Management Program

## Purpose

The maps and schedules contained within this Joint Fuel Management Program set out where and when fuel management activities are planned to occur for the period 2018/19 to 2020/21 within the Loddon Mallee Region.

These activities are carried out to reduce bushfire fuels – like leaves, twigs, bark and grass – to make bushfires less intense, minimising the risk to communities and providing safety to firefighters while fighting these fires. Activities are also done to maintain the health of ecosystems that rely on fire to regenerate.

It is important to note that the ability to carry out burns is dependent on seasonal and local weather conditions. To allow for this, planned burns from the second and third years of the program may be brought forward to the current year to replace a burn planned for the first year.

Fuel Management activities are under taken across the landscape on public and private land. Through the fuel management planning processes the appropriate lead agency for delivery has been determined.

This document consists of Lead Agency District sub-plans and contains the following schedules:

**Schedule 1 – Planned Burns.** This schedule lists planned fuel reduction, ecological and other planned burns by indicative year for the three-year period.

**Schedule 2 – Non-Burn Fuel Treatments.** This schedule summaries the program that uses methods other than burning to achieve the fuel management objectives.

**Schedule 3 – Strategic Fuelbreaks.** This schedule provides an overview of FFMVic strategic fuelbreaks to be constructed during the three-year period. The locations of strategic fuelbreaks are included for information only. These activities are approved via other DELWP and Parks Victoria processes.

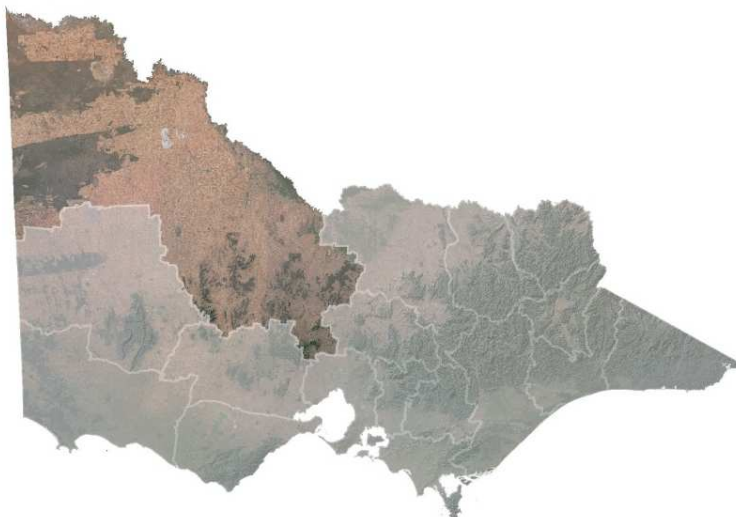
It should be noted that CFA/Municipality led strategic fuel breaks are not included in this Regional JFMP. These activities are approved and listed as part of Municipal planning processes.

The following Districts are part of the Loddon Mallee Region:

Mallee District, DELWP	District 18, CFA
Murray Goldfields District, DELWP	District 20, CFA
	District 2, CFA

CFA Lead Planned Burns will continue to be planned and delivered through their respective Authorising District, irrespective of which regional JFMP they appear in.

## Map 1: Loddon Mallee Region



Burns associated with logging regeneration as well as small heap burns are not included in the Joint Fuel Management Program process.

The Joint Fuel Management Program is prepared and will be implemented in accordance with the *Code of Practice for Bushfire Management on Public Land 2012* (the Code), *Safer Together: A new approach to reducing the risk of bushfire in Victoria* and relevant CFA and FFMVic Instructions, Manuals and Guidelines.

## Objective

The Loddon Mallee Region JFMP has been developed to implement strategies set out in DELWP's strategic bushfire management plans which address DELWP's legal obligations, policy commitments and objectives, including:

- bushfire risk reduction to protect human life and property,
- maintaining and enhancing ecosystem resilience, and
- achieving other desired outcomes as identified by communities.

## Strategic Bushfire Management Planning

DELWP in consultation with CFA and communities has developed long-term strategic bushfire management plans to identify where it is best to undertake fire management to achieve the above objectives.

The strategies apply four Fire Management Zones (FMZ) on public land as described in the Code. This zoning establishes the primary objective for fuel management in different areas of the public land landscape and include:

**Asset Protection Zone (APZ):** where intensive fuel management provides the highest level of localised protection to human life and property;

**Bushfire Moderation Zone (BMZ):** where there is fuel management to reduce the speed and intensity of bushfires, either close to towns or as they spread through the landscape;

**Landscape Management Zone (LMZ):** where fuel management is done to reduce fuel hazard, improve ecosystem resilience and manage the land for particular uses (such as forest regeneration and water catchment protection); and

**Planned Burning Exclusion Zone (PBEZ):** where there is no planned burning, mainly to protect areas that can't tolerate fire.

The zones and other strategies in strategic bushfire management plans inform the development of the JFMP. They are used to determine where fuel management activities need to be carried out over the next three-year period to meet the longer-term strategy's objectives, if weather and other conditions permit.

Burns are planned across all available fire management zones (APZ, BMZ and LMZ) for maintaining bushfire risk to desired levels. It is just as important to carry out planned burns in remote areas, as fires can start in these areas and spread to threaten houses and communities.

Fire Management Zoning will be expanded to cover private land as further analysis occurs. This next step will re-enforce our tenure-blind commitment to achieving an integrated approach to bushfire fuel management.

The Loddon Mallee Region is comprised of the Mallee Murray Goulburn, South West and West Central Bushfire Risk Landscapes. Fuel management strategies within all three of these landscapes prioritise management actions for life and property risk reduction to the north and south west of our most bushfire prone and high consequence townships. Such strategies aim to mitigate against the impacts of severe, extreme and catastrophic bushfire weather.

In the 2018-21 Joint Fuel Management Plan, there are 181 burns planned with a fuel/risk reduction target. Of these, 157 are identified priority fuel management areas and fall within either strategic Asset Protection or Bushfire Moderation zones. Close to communities more intense fuel treatment will be carried out in Asset Protection Zones (APZ) to mitigate direct flame and ember impacts. Fuel treatment in Bushfire Moderation Zones (BMZ) will build on risk mitigation achieved in the Asset Protection Zones. The primary aim in both zones is life and property protection from bushfires. Less intense fuel treatment will be undertaken further

from communities to reduce the size and spread of bushfires. These areas are often zoned as Landscape Management Zones and fuel treatment in them supports bushfire protection and ecological outcomes.

There are Traditional Owner burns located in both Murray Goldfields and Mallee Districts, identified in planned burn exclusion zones, or on private land. Traditional Owner burning currently falls outside of strategy; however, any burns undertaken within planned burn exclusion zones are not consistent with strategy.

#### Murray Goldfields Fire District

The Murray Goldfields JFMP is consistent with the risk reduction outcomes prioritised by West Central, South West and Mallee Murray Goulburn Bushfire Risk Landscape strategy.

APZ and BMZ burns at Mount Macedon are vital in protecting the Murray Goldfields District's highest risk townships. The cross-tenure nomination at Salisbury Road will support the Campey Road burn in reducing risk to the Macedon corridor properties, and to identified assets including local infrastructure and the primary school. This is a prime example of Safer Together within the region and supports the recommendation of the Municipal Fire Management Planning Committee.

Castlemaine and surrounding properties are among the most at risk townships within the district, and the current JFMP balances the need to reduce bushfire risk with ecological needs and community values. Burns to the north west of Castlemaine provide the best options for protecting this community that has been identified as high priority due to bushfire risk analysis. A priority burn adjacent to Fryerstown serves to address the region's greatest bushfire risk which has been identified in collaboration with local government partners.

Burns at Marong and Lockwood provide the highest level of protection to the identified priority areas of Kangaroo Flat and Mandurang by reducing landscape level risk within the district. These burns are also positioned to reduce the likelihood of plume driven bushfire developing which could not be suppressed.

More than 4,500 ha of planned burns occur in identified priority fuel management areas in each year of the JFMP, and there is minimal burning planned in LMZ areas. Minimisation of broad landscape burning supports the West Central and Mallee Murray Goldfields BRL strategies as:

- the vegetation is not fire dependent;
- APZ / BMZ has been arranged to treat areas where bushfires pose the highest risk to life and property;
- strategy supports only burning in LMZ where an ecological, or risk objective has been identified.

#### Mallee Fire District

In the large mallee parks, fuel reduction work is planned to support the creation of strategic fuelbreaks. These breaks are generally 1km wide and are located to reduce the likelihood of large destructive fires developing over multiple days. This strategy aims to reduce the negative impact large fires can have on the environment, the costs of suppression, and the risk of fires becoming uncontrollable, exiting parks and threatening communities.

Fuel treatment work is also planned in areas on the edge of the Mallee Parks. These works are strategically placed to reduce the likelihood of fires exiting the parks in areas where they could impact life and property or economic assets. The works planned on the edge of the Wyperfeld National Park are in the in the Hopetoun and Rainbow bushfire catchment areas. Similarly works are planned on the edge of the Murray Sunset National Park influence bushfire risk in the Walpeup bushfire catchment. These works provide high level protection to the District's most high-risk communities.

### **Bushfire Risk Reduction**

*Safer Together: A new approach to reducing the risk of bushfire in Victoria* sets out the Victorian Government's commitments to reducing the risk of bushfire in Victoria. It adopts a risk reduction target to guide fuel management, maintaining bushfire risk at or below a residual risk of 70% in the long-term.

Residual risk, is the risk, on average, that bushfires will impact on life and property across the landscape. It is expressed as the percentage of the risk that remains after bushfire history and fuel management (mainly planned burning) activities are considered.

The current residual risk for the West Central, South West and Mallee Murray Goulburn Bushfire Risk Landscapes, (which comprise Loddon Mallee Region), is below the targets set in the Strategic Bushfire Management Plans (SBMPs).

Implementation of the JFMP will see residual risk in the Mallee decrease and rise in the Murray Goldfields. The MGFDD has historically maintained risk above 80%, but in 2015 this fell to an all-time low of 60%, following years of targeted planned burns. As fuels reaccumulate in these areas risk levels will rise, but priority burns in high risk areas will maintain community safety at the highest possible level. Areas where risk is returning will be re-burnt once sufficient time has passed for adequate fuel accumulation and/or maintenance of ecosystem health.

Burns at Fryerstown and Macedon support the ongoing and new Community Based Bushfire Management (CBBM) projects, and are in response to community need, municipal fire prevention committee requests and phoenix Rapidfire modelling. These burns capture the essence of Safer Together and highlight the benefits of ongoing engagement and sector partnerships.

Through our work implementing Safer Together in the community, a strong sense of place within the Murray Goldfields community has been identified. Within our community there is a strong desire to protect key fire response species, improve biodiversity and strengthen resilience within our forests. By minimising the amount of broad scale LMZ burning, and focusing predominantly on either ecological or research opportunities, we are meeting the community recommendations and upholding values identified in Safer Together activities. We are working with local environmental groups and stakeholders to improve our understanding of vegetative response to fire in fire independent ecosystems. The large LMZ burn at Bealiba will be used as a monitoring site for this process.

*Safer Together* commits DELWP and CFA to working together, sharing responsibility for fuel management with private landholders and local government. This new approach will enhance DELWP and CFA to plan, prepare and deliver a fuel management program across the landscape, regardless of land tenure.

Where cross-tenure and private property burns have been included on this JFMP, representatives from either/or both CFA and DELWP have worked collaboratively with the relevant landholder(s) to plan the burn. Burns conducted partially or wholly on private land are always undertaken with the landholder's consent.

### **Working with communities**

Managing bushfire risk is an ongoing and shared responsibility in which everyone has a role. To work well with communities to manage bushfire risk, DELWP operates under the principles of the *DELWP Community Charter* and CFA operates under the *CFA Service Delivery Strategy 2015-2020*.

In the Loddon Mallee Region, DELWP and CFA form partnerships with each other to work with communities, while each agency also maintains relationships with communities independent of each other. Under *Safer Together*, partnerships between DELWP, CFA, local government and other agencies will continue to be enhanced so that communities receive the best level of service.

DELWP and CFA work all year round with communities to understand and reduce bushfire risk. As a part of delivering *Safer Together*, DELWP has worked with many stakeholders and partners to develop the JFMP, including local government through Municipal Emergency Management Planning Committees, water authorities, environmental groups (i.e. Birdlife Australia, Victorian National Parks Association), university research partners, Mallee Fire Advisory Committee, local Traditional Owner groups, local CFA Fire Brigade Captains and Group Officers, as well as the wider community through field days and the Big Desert Fire Conference. We continue to extend the range of stakeholders with whom we engage at the strategic planning level through the development of the Regional Strategic Bushfire Management plan which is due for completion in June 2019.

Community stakeholders have provided input by a range of methods including Open Houses, pre season listening posts and day of burn information points. Through this community have also nominated burns for the JFMP and provided comment on existing burns. This local knowledge has been incorporated into determining where planned burns take place, how they should be delivered and what values need protection. Proposed burns were modified or removed to protect the endangered Mallee Emu-wren for this reason. Stakeholder groups fully understand that our staff are available at all times to discuss aspects of the JFMP.



Other engagement activities include attending and presenting at stakeholders meetings, on site discussions around individual burns and purpose driven meetings to discuss individual concerns. The JFMP will have the most impact on wine growing areas such as the Macedon, Heathcote and Pyrenees communities. It will also impact on the Murrayville and Walpeup communities and we will be working with these communities to manage this.

Priority communities for the Loddon Mallee include Kangaroo Flat, Castlemaine, Macedon, Inglewood, Wedderburn, Murrayville, Yaapeet, Hopetoun and Walpeup. In the Loddon Mallee Region there are currently two sites of Community Based Bushfire Management; Benloch and the Macedon Corridor, specifically at the townships of Heskett and Kerrie.

In the Loddon Mallee we have 12 cross tenure fuel treatment nominations on the JFMP. These nominations are the result of working closely with local government, CFA and private landholders to deliver the best outcomes for our community. Nominations in Macedon, Fryerstown, Maiden Gully, Woodend, Inglewood, Rainbow, Dattuck and adjacent to Wyperfeld National Park complement new and previous fuel treatments delivered in the area by extending fuel treatments onto private land to reduce the risk of bushfire impacting houses in the area. On this JFMP there is also cross tenure fuel treatments involving Dja Dja Wurrung burning on private property in Fryerstown and Committee of Management (COM) land in Bendigo for ecological objectives.

### **Maintaining and enhancing Ecosystem Resilience**

An objective of the Code is to “*maintain or improve the resilience of natural ecosystems and their ability to deliver services such as biodiversity, water, carbon storage and forest products*” (the Code). Strategic bushfire management plans include consideration of ecosystem resilience at a strategic level over the long term, particularly how we can measure it. However, DELWP is working towards developing a more detailed understanding of how planned burning might impact flora and fauna, and how we can use fire to maintain and enhance ecosystem resilience into the future.

In Victoria, the Region is unique with 37% of its threatened species (both flora and fauna) being almost exclusively found within this area. This is the largest proportion of threatened species of any Region in Victoria. Most of these species prefer mature and late growth stage vegetation in order to survive and thrive.

### **Mallee Fire District**

The primary ecosystem resilience objective of the JFMP within the Mallee District is to reduce the likelihood of high intensity bushfires from burning large areas of the public land estate. Within this objective, it is intended that less than 10% of the district be below minimum tolerable fire interval ( $TFI_{min}$ ) at any one time.

The ( $TFI_{min}$ ) is the minimum number of years between fires for a vegetation community to recover and reach sustainable reproductive maturity and for all animal populations to recover. Repeated burning below  $TFI_{min}$  will lead to ecosystem exhaustion and very low levels of ecosystem resilience. To achieve the highest ecosystem resilience in the Mallee Fire District over 90% of the native vegetation must be in the mature and late growth stages.

Vegetation of different post-fire growth stages support animal population at different abundances depending on the habitat provided within that growth stage. This variation in ‘habitat suitability’ can be graphed as a function of time since fire to produce species’ fire “response curves”. Response curves can vary between species. Some species such as rodents are most abundant in early post fire vegetation (i.e. <20 years) whereas species such as Black-eared Miners and Malleefowl preferentially utilise older growth vegetation at 60-80 years after fire. Across the landscape there will be a diversity of stands of vegetation of differing ages (i.e. times since fire or growth stages). Overall, the Mallee District landscape needs to have the largest proportions of vegetation in late and mature growth stages to support viable population for the greatest diversity of species and consequently have the highest level of Ecosystem Resilience.

The goal of the JFMP is to reduce the likelihood of large scale bushfires developing which would simplify the growth stage structure to mostly recently burnt vegetation. A landscape in this state is considered to have a low ecosystem resilience. In the two largest sub-landscapes of the Mallee District (Murray Sunset/Hattah-Kulkyne (MSHK) and Big Desert/Wyperfeld (BDW)) full implementation of the JFMP will reduce median bushfire size by 93% MSHK and by 60% in BDW.

The other ecological priority within the Mallee District is to exclude bushfires from fire sensitive vegetation communities, most notably the Riparian Woodlands and the EPBC listed Semi-arid Woodlands.

This JFMP aims to continue the implementation and maintenance of a network of strategic fuel reduced corridors within the large public land blocks of the Mallee system. These corridors are designed to limit the size and frequency of large high intensity bushfires. Parts of the JFMP are also intended to protect fire sensitive areas such as Semi-arid Woodlands and Riparian flood plain woodlands from fire.

### Murray Goldfields Fire District

Vegetation of the Murray Goldfields is inherently less fire dependent than in the Mallee District. Furthermore, the history of extensive disturbance as a result of gold mining, timber extraction and clearing has resulted in a highly fragmented arrangement of forest blocks that is inherently less resilient than the large forest blocks of the Mallee. This history informs the ecological strategies for this area.

In the Murray Goldfields Fire District, the ecological strategic objectives are to promote species dependant on old growth forest by protecting habitat found only in long unburnt vegetation and avoiding burning vegetation under minimum Tolerable Fire Interval (TFI). Further, we are aiming to promote a diversity of fire histories in our landscape by spatially and temporally arranging burns across the Murray Goldfields. Across the District, these strategies are targeted to maintain or enhance populations of threatened species and communities (e.g. areas around Bendigo, Maryborough, Heathcote and Castlemaine with slow-growing understory vegetation and tree hollows). Both of these habitat features are commonly lost in a bushfire, placing priority species such as barking owl, hooded robin, speckled warbler and the brush-tailed phascogale at risk. To support these ecological priorities, we aim to protect older forest, identify and implement mitigation measures for these priority species and their habitats that occur within planned burns.

Tolerable fire intervals (TFIs) are the minimum and maximum recommended times between fire events for a vegetation community. Burning regularly outside these intervals increases the risk that there will be fundamental changes in the abundance and composition of species, and the type of vegetation. We use TFIs as an initial surrogate measure of risk to ecosystem resilience across the landscape, and as an input to decisions about how often, when and where to conduct planned burning. Due to the juxtaposition of forest close to human settlements and a recent increase in planned burning, particularly in 2011, 2014 and 2015, around areas of the Murray Goldfields forest is currently below TFI. The current JFMP will only focus on these areas again if they are close to property or towns and will reduce the risk of bushfire, or if Traditional Owners are undertaking a low intensity burn for the purposes of healing country.

The growth stage of vegetation depends on when it was last burnt, or subject to other disturbance. Each vegetation type over time passes through distinct stages following disturbance, each stage differing in the quality of the habitat it provides for plants and animals. Lack of diversity of growth stages in a landscape may reduce the ecosystem's capacity to resist damage and maintain its basic structure and type, after being disturbed by fire. DELWP is working towards using vegetation growth stages to help measure ecosystem resilience.

The proportion of vegetation in the younger growth stages (juvenile and adolescent) has increased over the last decade due to an increase in planned burning. There is currently a small amount of the Murray Goldfields Fire District in the old growth stage; however, around half of the District has no recorded fire history and so could be assumed to be in the old growth stage.

The JFMP supports ecosystem resilience by: avoiding burning in ecologically high value fire sensitive areas in the landscape; minimising the area burnt while below TFI across the landscape; promoting a mix of vegetation growth stages to provide a range of habitat for fauna, which includes maintaining longer unburnt vegetation across all vegetation types; spatially and temporally arranging burns across the landscape to ensure that larger patches of connected habitat is retained, and; applying measures at each burn to mitigate impacts on threatened species associated with mechanical disturbance and planned burning.

The JFMP aims to improve ecosystem resilience by minimising LMZ burns without specific ecological objectives. The large burn at Bealiba (~5,000ha) will focus on improving knowledge around the ecosystem resilience and fire response of Box Ironbark Forest. The patchy burning techniques and different intensities of applied fire that will be employed will promote different vegetation communities throughout the burn and will give the opportunity to assess forest recovery under different burn conditions.

**Other objectives specific to the Loddon Mallee Region**

The JFMP supports Traditional Burning in the Loddon Mallee through the addition of burns in partnership with Dja Dja Wurrung, Barapa Barapa and Yorta Yorta Traditional Owner Groups. We have a strong commitment to working with Traditional Owners to help heal country and facilitate the reintroduction of Aboriginal fire practices into the future.

## Endorsement

The 2018/19 – 2020/21 Joint Fuel Management Plan for the Loddon Mallee Region has been endorsed by:

---

DELWP Assistant Chief Fire Officer: Scott Falconer, Loddon Mallee Region

---

## Approval

The 2018/19 – 2020/21 Joint Fuel Management Plan for the Loddon Mallee Region has been endorsed by:

---

DELWP Chief Fire Officer: Chris Hardman

---

---

CFA Chief Officer: Steve Warrington

---

Noting for on ground ignition and delivery of cross tenure and private property burns, DELWP and CFA agency responsibilities remain unchanged.

## Viewing the Loddon Mallee Joint Fuel Management Program

The 2018/19 – 2020/21 Joint Fuel Management Plan for the Loddon Mallee Region can be viewed during normal business hours at the following office locations:

Location	Address
DELWP Bendigo/Epsom	Cnr Midland Hwy & Taylor Street
DELWP Heathcote	28 Herriot Street (Wed 9am-4pm)
DELWP Maryborough	2/82 Alma Street (Mon, Tue, Wed only, closed during lunch)
DELWP Irymple	Cnr Koorlong Ave & Eleventh Street
DELWP Swan Hill	324 Campbell Street
Parks Victoria Hattah	Information Centre
Parks Victoria Robinvale	Higgins Road
Parks Victoria Rainbow	6679 Dimboola – Rainbow Road

### Viewing the Plan online:

You can view the Loddon Mallee Joint Fuel Management Program online at:

<http://www.ffm.vic.gov.au/bushfire-fuel-and-risk-management/fire-operation-plans>

### Upcoming burns

Burns that will be conducted within the next ten days (weather conditions permitting) can be viewed at:

<http://www.ffm.vic.gov.au/bushfire-fuel-and-risk-management/planned-burns>

You can also sign up to the Planned burning notification system (PBNS) and Vic Emergency App to receive automated SMS and email notifications about planned burns when they are close to being carried out.

# How to become involved in the Joint Fuel Management Program

DELWP and CFA welcome comment on fire management all year round, on all parts of the planning process – both strategic and operational. Please be aware that due to the planning cycle your comments relating to fire operations may be included in next year's Joint Fuel Management Plan.

Comments and suggestions about DELWP and CFA fire management planning can be sent to:

**Regional Fuel Management Coordinator – Loddon Mallee Region**

PO Box 3100

Bendigo Delivery Centre, Victoria, 3554

**Vegetation Management Officer – North West Region**

45 Chapel Street,

Bendigo, Victoria, 3550

**Planned Burning Email contact details:**

Comments may also be sent by email to: [loddonmallee.plannedburning@delwp.vic.gov.au](mailto:loddonmallee.plannedburning@delwp.vic.gov.au)

# Appendix (i): Schedules of Activities

## DELWP LEAD AGENCY MALLEE DISTRICT SCHEDULE

### SCHEDULE 1: PLANNED BURNS

The activities in this schedule are planned burns.

Please note that the planned burn year and season identified for each planned burn is indicative only and may be changed due to weather conditions and operational requirements.

**Abbreviations in Schedule1:** '\*' asterisk on burn name denotes a cross tenure burn; PV - Parks Victoria; COM - Committee of Management; DELWP- Department of Environment Land Water and Planning; PP – Private Property; FRB - Fuel Reduction Burn; ECO - ecological burn; FMZ – Fire Management Zone; APZ - Asset Protection Zone; BMZ – Bushfire Moderation Zone; LMZ - Landscape Management Zone; PBEZ – Planned Burn Exclusion Zone; NZ -Not Zoned.

### DELWP Lead Agency Planned Burns 2018/19

Local Government Area	Burn Number	Burn Name	General Location	Land Manager	Burn Season	Burn Type (FRB/ECO)	Land Management Objective	FMZ	Planned Burn Size (ha)	New Burn (New/ )
Hindmarsh	WYP-3011	Big Desert - Pella Fire North	19KM W OF RAINBOW	DELWP	Autumn	ECO	To provide bushfire protection outcomes by reducing overall fuel hazard and bushfire hazard in the landscape.	LMZ	289.8	N
Hindmarsh	4MRAI0001	Rainbow Common*	1KM W OF RAINBOW	COM	Summer	FRB	To provide a high level of strategic protection to human life, property and highly valued assets within the Rainbow Township.	NZ	49.46	N
Hindmarsh	4MWYP0030	Wyperfeld - Booligal Boundary	20KM NW OF RAINBOW	Parks Victoria	Spring	FRB	To develop a fuel reduced area to the south of the adjacent crop/stubble.	BMZ	1026.97	N
Hindmarsh	377	Wyperfeld - Booligal West*	25km NW OF RAINBOW	Parks Victoria	Autumn	FRB	To provide bushfire protection outcomes by reducing overall fuel hazard and bushfire hazard in the landscape.	LMZ	294.22	N
Hindmarsh	WYP-3016	Wyperfeld - Underbool Track West	36KM S OF UNDERBOOL	Parks Victoria	Autumn	ECO	To provide bushfire protection outcomes by reducing overall fuel hazard and bushfire hazard in the landscape.	LMZ	587.26	N
Mildura	272	Patchewollock - Ouyen Walpeup Road	20KMS SE OF WALPEUP	DELWP	Spring	FRB	To develop fuel reduced areas of sufficient width and continuity to reduce the speed and intensity of bushfires.	LMZ	291.56	N
Mildura	4MANN0005	Annuello - Benham Track	24KM SE OF HATTAH	Parks Victoria	Autumn	FRB	To provide bushfire protection outcomes by reducing overall fuel hazard and bushfire hazard in the landscape.	LMZ	636.83	N

Mildura	WYP-3004	Baring - East Boundary	6KM SW OF PATCHEWOLLOCK	DELWP	Autumn	FRB	To provide bushfire protection outcomes by reducing overall fuel hazard and bushfire hazard in the landscape.	LMZ	68.52	N
Mildura	WYP-3018	Big Desert - Fire Break Track	10KM S OF MURRAYVILLE	DELWP	Spring	FRB	To develop fuel reduced areas of sufficient width and continuity to reduce the speed and intensity of bushfires.	BMZ	396.83	N
Mildura	WYP-3019	Big Desert - North West Boundary	25KM SW OF MURRAYVILLE	DELWP	Spring	FRB	To develop fuel reduced areas of sufficient width and continuity to reduce the speed and intensity of bushfires.	BMZ	260.5	N
Mildura	WYP-3017	Big Desert - Northern Boundary	15KM SE OF MURRAYVILLE	DELWP	Spring	FRB	To develop fuel reduced areas of sufficient width and continuity to reduce the speed and intensity of bushfires.	BMZ	663.35	N
Mildura	224-1	Big Desert - Wilderness Area	20KMS SSW OF MURRAYVILLE	Parks Victoria	Spring	FRB	To develop fuel reduced areas of sufficient width and continuity to reduce the speed and intensity of bushfires.	BMZ	1694.66	N
Mildura	390	Boinka - Underbool Tank South	31KMS NW OF UNDERBOOL	DELWP	Spring	FRB	To provide bushfire protection outcomes by reducing overall fuel hazard and bushfire hazard in the landscape.	NZ	500.86	N
Mildura	HAT-3006	Hattah - Zig Zag South	11KM SE OF HATTAH	Parks Victoria	Autumn	ECO	To develop a fuel reduced area to the north of the adjacent private properties.	LMZ	288.53	N
Mildura	4MSUN0004	Koorlong - Simmonds Track	6KM WEST OF KOORLONG	DELWP	Spring	FRB	To provide bushfire protection by reducing overall fuel hazard and bushfire hazard in the landscape.	NZ	12	Y
Mildura	4MMSN0038	Murray Sunset - Danyo Boundary	26KM NNE OF MURRAYVILLE	Parks Victoria	Spring	FRB	To develop a fuel reduced area to the south of the adjacent private property.	BMZ	1366.39	N
Mildura	4MMSN0020	Murray Sunset - Last Hope Track	45KM NNW OF UNDERBOOL	Parks Victoria	Autumn	FRB	To provide bushfire protection outcomes by reducing overall fuel hazard and bushfire hazard in the landscape.	LMZ	495.95	N
Mildura	4MMSN0043	Murray Sunset - Last Hope Track South East	40KM NNW OF WALPEUP	Parks Victoria	Autumn	FRB	To develop fuel reduced areas of sufficient width and continuity to reduce the speed and intensity of bushfires.	LMZ	715.51	N
Mildura	4MMSN0018	Murray Sunset - Miners Track North	22KM SSE OF MERINGUR	Parks Victoria	Autumn	FRB	To develop fuel reduced areas of sufficient width and continuity to reduce the speed and intensity of bushfires.	LMZ	465.72	N
Mildura	4MMSN0019	Murray Sunset - Miners Track South	27KM SSE OF MERINGUR	Parks Victoria	Autumn	FRB	To provide bushfire protection outcomes by reducing overall fuel hazard and bushfire hazard in the landscape.	LMZ	186.32	N
Mildura	4MMSN0024	Murray Sunset - Mt Crozier Track East	16KM NNW OF UNDERBOOL	Parks Victoria	Spring	FRB	To develop a fuel reduced area to the north of the adjacent crop/stubble.	BMZ	456.4	N
Mildura	256	Murray Sunset - One Tree Plain Track	29KM WSW OF HATTAH	Parks Victoria	Autumn	FRB	To develop fuel reduced areas of sufficient width and continuity to reduce the speed and intensity of bushfires.	BMZ	337.32	N
Mildura	245	Murray Sunset - Pheenys Track East	38KM S OF WERRIMULL	Parks Victoria	Spring	FRB	To develop fuel reduced areas of sufficient width and continuity to reduce the speed and intensity of bushfires.	LMZ	588.02	N

Mildura	MSN-3007	Murray Sunset - Pink Lakes East Boundary	12KM N OF UNDERBOOL	Parks Victoria	Spring	FRB	To develop fuel reduced areas of sufficient width and continuity to reduce the speed and intensity of bushfires.	LMZ	788.07	N
Mildura	268	Murray Sunset - Walker Road	27KMS N OF WALPEUP	Parks Victoria	Autumn	FRB	To develop fuel reduced areas of sufficient width and continuity to reduce the speed and intensity of bushfires.	BMZ	126.1	N
Mildura	4MMSN0001	Murray Sunset - Wilderness Central	50KM NNE OF MURRAYVILLE	Parks Victoria	Autumn	FRB	To provide bushfire protection outcomes by reducing overall fuel hazard and bushfire hazard in the landscape.	LMZ	430.98	N
Mildura	4MMSN0016	Murray Sunset - Wilderness Pheenys Track	37KM S OF MERINGUR	Parks Victoria	Spring	FRB	To provide bushfire protection outcomes by reducing overall fuel hazard and bushfire hazard in the landscape.	LMZ	408	N
Mildura	WYP-3008	Wyperfeld - Nine Mile Square East	23KM SW OF PATCHEWOLLOCK	Parks Victoria	Autumn	ECO	To provide bushfire protection outcomes by reducing overall fuel hazard and bushfire hazard in the landscape.	LMZ	356.28	N
Mildura	259	Wyperfeld - Nine Mile Square West	33KM S OF UNDERBOOL	Parks Victoria	Spring	FRB	To develop fuel reduced areas of sufficient width and continuity to reduce the speed and intensity of bushfires.	BMZ	267.12	N
Mildura	4MCHI0001	Chinkapook - Lianiduck FFR	5KM SSW OF CHINKAPOOK	Parks Victoria	Autumn	ECO	To modify the vegetation abundance across the planned area to assist the promotion of natural grassland.	LMZ	75	Y
Swan Hill	LM-MAL-SWA-0002	Pental Island - Little Murray Weir	6KM N of Lake Boga	DELWP	Spring	FRB	To provide bushfire protection outcomes by reducing overall fuel hazard and bushfire hazard in the landscape.	LMZ	3.38	N
West Wimmera	WYP-3009	Big Desert - Telopea West	30KM N OF YANAC	DELWP	Spring	ECO	To provide bushfire protection outcomes by reducing overall fuel hazard and bushfire hazard in the landscape.	LMZ	115.34	N
Yarriambiack	4MWAT0001	Wathe - North Boundary	11KM S OF SPEED	Parks Victoria	Spring	FRB	To develop a fuel reduced area to the east of the adjacent private property.	LMZ	74.04	N
Yarriambiack	379	Wyperfeld - Ginap Track North	17 KM SSW OF PATCHEWOLLOCK	Parks Victoria	Autumn	FRB	To provide bushfire protection outcomes by reducing overall fuel hazard and bushfire hazard in the landscape.	LMZ	302.11	N
Yarriambiack	258	Wyperfeld - North South Track	16KM SSW OF PATCHEWOLLOCK	Parks Victoria	Autumn	FRB	To develop fuel reduced areas of sufficient width and continuity to reduce the speed and intensity of bushfires.	LMZ	642.09	N
Yarriambiack	WYP-2002	Wyperfeld - Wirribibial Track*	15KM NW OF HOPETOUN	Parks Victoria & PP	Spring	FRB	To develop fuel reduced areas of sufficient width and continuity to reduce the speed and intensity of bushfires.	BMZ	227.52	N
Yarriambiack	4MYAA0001	Yaapeet - Yaapeet Bushland Reserve	1 KM WEST OF YAAPEET	Parks Victoria	Spring	FRB	To provide bushfire protection by reducing overall fuel hazard and bushfire hazard in the landscape.	NZ	8	Y



## DELWP Lead Agency Planned Burns 2019/20

Local Government Area	Burn Number	Burn Name	General Location	Land Manager	Burn Season	Burn Type (FRB/ECO)	Land Management Objective	FMZ	Planned Burn Size (ha)	New Burn (New/)
Hindmarsh	4MWYP0029	Big Desert - Netting Fence East	23KM WSW OF RAINBOW	DELWP	Spring	FRB	To develop fuel reduced areas of sufficient width and continuity to reduce the speed and intensity of bushfires.	BMZ	610	N
Hindmarsh	WYP-3030	Big Desert - Netting Fence North	33KM NW OF YANAC	DELWP	Autumn	ECO	To provide bushfire protection outcomes by reducing overall fuel hazard and bushfire hazard in the landscape.	LMZ	1878.72	N
Hindmarsh	WYP-3012	Wyperfeld - Booligal South Boundary	17KM W OF RAINBOW	DELWP	Autumn	ECO	To develop fuel reduced areas of sufficient width and continuity to reduce the speed and intensity of bushfires.	BMZ	857.64	N
Hindmarsh	LM-MAL-WYP-0024	Wyperfeld - Milmed Rock Track East	40KM NW of Rainbow	Parks Victoria	Autumn	FRB	To provide bushfire protection outcomes by reducing overall fuel hazard and bushfire hazard in the landscape.	LMZ	996.55	N
Mildura	4MWYP0033	Big Desert - Coburns Pines	18KM SW OF MURRAYVILLE	DELWP	Autumn	FRB	To develop a fuel reduced area to the west of the Coburns Pines visitation area.	LMZ	28.29	N
Mildura	225	Big Desert - Majorlock Soak Track	15KM SW of Cowangie	Parks Victoria	Autumn	FRB	To develop fuel reduced areas of sufficient width and continuity to reduce the speed and intensity of bushfires.	BMZ	3285.34	N
Mildura	4MWYP0039	Big Desert - Tutye South Boundary	10KM SOUTH OF TUTYE	DELWP	Spring	FRB	To develop a fuel reduced area to the south of the adjacent crop/stubble.	BMZ	359.39	N
Mildura	367	Hattah - Mournpall South	5KM NE of Hattah	Parks Victoria	Autumn	FRB	To provide bushfire protection outcomes by reducing overall fuel hazard and bushfire hazard in the landscape.	LMZ	126.03	N
Mildura	4MHAT0009	Hattah - Red Ocre Track	12KM N OF HATTAH	Parks Victoria	Autumn	FRB	To provide bushfire protection outcomes by reducing overall fuel hazard and bushfire hazard in the landscape.	BMZ	241.94	N
Mildura	4MMSN0003	Murray Sunset - Honeymoon Hut Track North	28KM NW OF UNDERBOOL	Parks Victoria	Spring	FRB	To provide bushfire protection outcomes by reducing overall fuel hazard and bushfire hazard in the landscape.	LMZ	819.65	N
Mildura	4MMSN0025	Murray Sunset - One Tree Plain Track South	28KM SW OF HATTAH	Parks Victoria	Spring	FRB	To provide bushfire protection outcomes by reducing overall fuel hazard and bushfire hazard in the landscape.	BMZ	982.32	N
Mildura	4MMSN0021	Murray Sunset - Rocket Lake Track West	36KM SSE OF WERRIMULL	Parks Victoria	Spring	FRB	To develop fuel reduced areas of sufficient width and continuity to reduce the speed and intensity of bushfires.	LMZ	2853.3	N
Mildura	4MMSN0002	Murray Sunset - Underbool Track West	42KM NNW OF UNDERBOOL	Parks Victoria	Spring	FRB	To provide bushfire protection outcomes by reducing overall fuel hazard and bushfire hazard in the landscape.	LMZ	354.88	N

Mildura	4MMUR0001	Murrayville - Township North	2KM NW OF MURRAYVILLE	Parks Victoria	Autumn	FRB	To develop a fuel reduced area to the north west of the Murrayville township.	APZ	5.94	N
Mildura	WYP-3014	Patchewollock - North Boundary	13KM SE OF WALPEUP	DELWP	Spring	ECO	To provide bushfire protection outcomes by reducing overall fuel hazard and bushfire hazard in the landscape.	LMZ	518.59	N
Mildura	4MWYP0012	Patchewollock - South Boundary	10KM NW OF PATCHEWOLLOCK	DELWP	Autumn	FRB	To provide bushfire protection outcomes by reducing overall fuel hazard and bushfire hazard in the landscape.	LMZ	447.58	N
Mildura	4MSUN0003	Sunnycliffs - Woolong Wetlands	3.5KM NE OF REDCLIFFS	Parks Victoria	Spring	FRB	To provide bushfire protection outcomes by reducing overall fuel hazard and bushfire hazard in the landscape.	LMZ	66.02	N
Mildura	4MWAL0002	Walpeup - Township West	1KM W OF WALPEUP	Parks Victoria	Autumn	FRB	To develop a fuel reduced area to the west of the Walpeup township.	BMZ	8.66	N
Mildura	4MWYP0038	Wyperfeld - Linga South Boundary	12.6KM SOUTH OF UNDERBOOL	Parks Victoria	Spring	FRB	To develop a fuel reduced area to the south of the adjacent crop/stubble.	BMZ	187.92	N
Mildura	4MWYP0056	Wyperfeld - Pine Plains Boundary	17.5KM WEST OF PATCHEWOLLOCK	Parks Victoria	Autumn	FRB	<b>To provide bushfire protection by reducing overall fuel hazard and bushfire hazard in the landscape.</b>	LMZ	82	Y
Mildura	4MWYP0041	Wyperfeld - Milmed Rock Track West	40KM SE OF MURRAYVILLE	Parks Victoria	Autumn	FRB	To provide bushfire protection outcomes by reducing overall fuel hazard and bushfire hazard in the landscape.	LMZ	544.76	N
Mildura	4MWYP0034	Wyperfeld - Twelve Mile Patch Soak	32KM SW OF UNDERBOOL	Parks Victoria	Autumn	FRB	To develop a fuel reduced area to the west of the Twelve Mile Patch Soak visitation area.	LMZ	41.62	N
Swan Hill	4MANN0006	Annuello - Northern Boundary	31KM ESE OF HATTAH	Parks Victoria	Spring	FRB	To develop fuel reduced areas of sufficient width and continuity to reduce the speed and intensity of bushfires.	LMZ	493.08	N
Swan Hill	4MROB0001	Kooloonong - Menzies Boundary	13KM SW OF BOUNDARY BEND	Parks Victoria	Spring	FRB	To provide bushfire protection outcomes by reducing overall fuel hazard and bushfire hazard in the landscape.	LMZ	75.55	N
Swan Hill	4MNVA0001	Nyah - Devils Bend	1KM NORTH OF NYAH	Parks Victoria	Winter	ECO	To modify the vegetation composition across the planned area to assist the control of invasive weeds such as scotch thistle on the Nyah Forest Flood Plain.	LMZ	16	Y
Swan Hill	4MROB0003	Wandown - North Boundary	18KM SW OF BOUNDARY BEND	Parks Victoria	Spring	FRB	To provide bushfire protection outcomes by reducing overall fuel hazard and bushfire hazard in the landscape.	LMZ	197.62	N
Swan Hill	4MROB0002	Wandown - South Boundary	15KM SW OF BOUNDARY BEND	Parks Victoria	Spring	FRB	To provide bushfire protection outcomes by reducing overall fuel hazard and bushfire hazard in the landscape.	LMZ	99.73	N
Yarriambiack	4MWYP0057	Dattuck - Dattuck Bushland Reserve*	13.5KM OF HOPETOUN	Parks Victoria	Autumn	FRB	To develop a fuel reduced area to the north of Desert South Road.	LMZ	25	Y
Yarriambiack	4MWAT0002	Wathe - West Boundary	16KM SSW OF SPEED	Parks Victoria	Spring	FRB	To develop a fuel reduced area to the south of the adjacent private property.	LMZ	128.68	N

Yarriambiack	4MWYP0031	Wyperfeld - Dattuck Yellow Gums	18.5KM NNW OF HOPETOUN	Parks Victoria	Autumn	FRB	To develop a fuel reduced area to the west of the Yellow Gum EVC.	LMZ	47.4	N
Yarriambiack	4MWYP0058	Wyperfeld - Paradise FFR East*	19KM WNW OF HOPETOUN	Parks Victoria	Autumn	FRB	To develop a fuel reduced area to the west of Wyperfeld and adjacent Private property.	LMZ	105	Y

## DELWP Lead Agency Planned Burns 2020/21

Local Government Area	Burn Number	Burn Name	General Location	Land Manager	Burn Season	Burn Type (FRB/ECO)	Land Management Objective	FMZ	Planned Burn Size (ha)	New Burn (New/ )
Hindmarsh	4MWYP0026	Big Desert - Broadies Track	20KM WSW OF RAINBOW	DELWP	Spring	FRB	To provide bushfire protection outcomes by reducing overall fuel hazard and bushfire hazard in the landscape.	BMZ	414.66	N
Hindmarsh	4MWYP0035	Big Desert - Netting Fence Central	38KM WSW OF RAINBOW	DELWP	Autumn	FRB	To build on protection works in the adjacent Asset Protection Zone.	BMZ	716.78	N
Hindmarsh	4MWYP0036	Big Desert - Telopea North	33KM NNW OF YANAC	DELWP	Autumn	FRB	To develop fuel reduced areas of sufficient width and continuity to reduce the speed and intensity of bushfires.	BMZ	1086.9	N
Mildura	4MANN0004	Annuello - Eastern Boundary	16KM WSW OF ANNUELLO	Parks Victoria	Spring	FRB	To develop fuel reduced areas of sufficient width and continuity to reduce the speed and intensity of bushfires.	BMZ	361.47	N
Mildura	4MANN0001	Annuello - North West Boundary	18KM SE OF HATTAH	Parks Victoria	Spring	FRB	To develop fuel reduced areas of sufficient width and continuity to reduce the speed and intensity of bushfires.	BMZ	695.29	N
Mildura	4MANN0002	Annuello - South West Boundary	20KM NE OF OUYEN	Parks Victoria	Spring	FRB	To develop fuel reduced areas of sufficient width and continuity to reduce the speed and intensity of bushfires.	BMZ	579.08	N
Mildura	4MANN0003	Annuello - Southern Boundary	28KM ENE OF OUYEN	Parks Victoria	Spring	FRB	To develop fuel reduced areas of sufficient width and continuity to reduce the speed and intensity of bushfires.	BMZ	341.91	N
Mildura	4MWYP0045	Big Desert - Nhill Murrayville Track South	42KM NNW OF YANAC	DELWP	Spring	FRB	To develop fuel reduced areas of sufficient width and continuity to reduce the speed and intensity of bushfires.	BMZ	2734.14	N
Mildura	234	Big Desert - Nhill Murrayville Track West	20KM SSE OF MURRAYVILLE	DELWP	Spring	FRB	To develop fuel reduced areas of sufficient width and continuity to reduce the speed and intensity of bushfires.	BMZ	3725	Y
Mildura	270	Big Desert - Wilderness North	33KMS SW OF MURRAYVILLE	Parks Victoria	Spring	FRB	To develop fuel reduced areas of sufficient width and continuity to reduce the speed and intensity of bushfires.	BMZ	1316.51	N
Mildura	4MHAT0012	Hattah - Calder Highway East	9KM NNW OF HATTAH	Parks Victoria	Spring	FRB	To provide bushfire protection outcomes by reducing overall fuel hazard and bushfire hazard in the landscape.	LMZ	279.84	N
Mildura	HAT-3007	Hattah - Dumosa Track	17KM N OF HATTAH	Parks Victoria	Spring	ECO	To provide bushfire protection outcomes by reducing overall fuel hazard and bushfire hazard in the landscape.	LMZ	131.26	N
Mildura	4MMSN0029	Murray Sunset - Galah North	15KM SW OF HATTAH	Parks Victoria	Spring	FRB	To provide bushfire protection outcomes by reducing overall fuel hazard and bushfire hazard in the	BMZ	207.37	N

		Road					landscape.			
Mildura	LM-MAL-MSN-0035	Murray Sunset - Mengler Road North East	18KM SW of Hattah	Parks Victoria	Spring	FRB	To provide bushfire protection outcomes by reducing overall fuel hazard and bushfire hazard in the landscape.	LMZ	371.43	N
Mildura	4MMSN0027	Murray Sunset - Mengler Road West	24KM SW OF HATTAH	Parks Victoria	Spring	FRB	To develop fuel reduced areas of sufficient width and continuity to reduce the speed and intensity of bushfires.	BMZ	54.83	N
Mildura	4MMSN0036	Murray Sunset - Mt Crozier Track	32KM NNW OF UNDERBOOL	Parks Victoria	Autumn	FRB	To provide bushfire protection outcomes by reducing overall fuel hazard and bushfire hazard in the landscape.	LMZ	505.85	N
Mildura	4MMSN0044	Murray Sunset - Mt Jess Corridor	20.5KM NNW OF UNDERBOOL	Parks Victoria	Autumn	FRB	To provide bushfire protection outcomes by reducing overall fuel hazard and bushfire hazard in the landscape.	BMZ	1085.12	N
Mildura	4MMSN0022	Murray Sunset - Nowingi Line Track	38KM WNW OF HATTAH	Parks Victoria	Spring	FRB	To provide bushfire protection outcomes by reducing overall fuel hazard and bushfire hazard in the landscape.	LMZ	698.97	N
Mildura	4MMSN0026	Murray Sunset - South Meridian Road	32KM SW OF HATTAH	Parks Victoria	Spring	FRB	To develop fuel reduced areas of sufficient width and continuity to reduce the speed and intensity of bushfires.	BMZ	162.95	N
Mildura	MSN-2002	Murray Sunset - South West Boundary	22KM N OF MURRAYVILLE	DELWP	Spring	FRB	To develop a fuel reduced area to the north of the adjacent private property.	BMZ	857.18	N
Mildura	4MMSN0011	Murray Sunset - Sunset Track	36KM N OF MURRAYVILLE	Parks Victoria	Spring	FRB	To develop fuel reduced areas of sufficient width and continuity to reduce the speed and intensity of bushfires.	BMZ	2031.56	N
Mildura	4MMSN0049	Murray Sunset - Tutye North Boundary	21KM N OF TUTYE	Parks Victoria	Autumn	FRB	To develop a fuel reduced area to the north of the adjacent crop/stubble.	BMZ	289.96	N
Mildura	4MMSN0042	Murray Sunset - Wilderness West	48KM N OF MURRAYVILLE	Parks Victoria	Autumn	FRB	To provide bushfire protection outcomes by reducing overall fuel hazard and bushfire hazard in the landscape.	LMZ	622.99	N
Mildura	4MWYP0042	Wyperfeld - Messa Rocks	45KM SSE OF UNDERBOOL	Parks Victoria	Autumn	FRB	To provide bushfire protection outcomes by reducing overall fuel hazard and bushfire hazard in the landscape.	LMZ	1207	Y
West Wimmera	WYP-3023	Big Desert - Telopea Central	27KM N OF YANAC	DELWP	Spring	ECO	To provide bushfire protection outcomes by reducing overall fuel hazard and bushfire hazard in the landscape.	LMZ	237.4	N
Yarriambiack	WYP-3015	Wyperfeld - Cambacanya Track West	21KM SW OF PATCHEWOLLOCK	Parks Victoria	Spring	ECO	To provide bushfire protection outcomes by reducing overall fuel hazard and bushfire hazard in the landscape.	LMZ	372.38	N

## DELWP LEAD AGENCY MURRAY GOLDFIELDS DISTRICT SCHEDULE

### SCHEDULE 1: PLANNED BURNS

The activities in this schedule are planned burns.

Please note that the planned burn year and season identified for each planned burn is indicative only and may be changed due to weather conditions and operational requirements.

**Abbreviations in Schedule1:** \*\* asterisk on burn name denotes a cross tenure burn; PV - Parks Victoria; COM - Committee of Management; DELWP- Department of Environment Land Water and Planning; PP – Private Property; FRB - Fuel Reduction Burn; ECO - ecological burn; FMZ – Fire Management Zone; APZ - Asset Protection Zone; BMZ – Bushfire Moderation Zone; LMZ - Landscape Management Zone; PBEZ – Planned Burn Exclusion Zone; NZ -Not Zoned.

### DELWP Lead Agency Planned Burns 2018/19

Local Government Area	Burn Number	Burn Name	General Location	Land Manager	Burn Season	Burn Type (FRB/ECO)	Land Management Objective	FMZ	Planned Burn Size (ha)	New Burn (New/ )
Campaspe	MGFCOH037	Roslynmead NCR - Nth Centre West	9km SW of Torrumbarry	Parks Victoria	Autumn	ECO	To manipulate vegetation to provide more suitable habitat for the plains wanderer resulting in a higher quality grassland.	LMZ	30.55	Y
Campaspe	MGFRSH015	Rushworth - Jones Road	1km S of Rushworth	DELWP	Spring	FRB	To develop fuel reduced areas of sufficient width and continuity to reduce the speed and intensity of bushfires.	BMZ	107.30	N
Campaspe	MGFRSH008	Whroo - Murchison Whroo Rd	2.5km E of Whroo	DELWP	Autumn	FRB	To develop fuel reduced areas of sufficient width and continuity to reduce the speed and intensity of bushfires.	BMZ	166.60	N
Campaspe	MGFYY001	Yorta Yorta - Echuca Middle Track	100m N of Echuca	Parks Victoria	Autumn	FRB	Management and restoration of food and fibre plants in situ	LMZ	29.28	Y
Central Goldfields	MGFMRY072	Amherst - Four Cat Tk	3.4km N of Talbot	DELWP	Autumn	FRB	To develop fuel reduced areas of sufficient width and continuity to reduce the speed and intensity of bushfires.	BMZ	227.70	N
Central Goldfields	MGFMRY051	Maryborough - Derby Rd	2.5km SSW of Maryborough	Parks Victoria	Spring	FRB	To provide the highest level of localised protection to human life, property and community assets identified as highly valued including	APZ	19.60	N

							Maryborough.			
Central Goldfields	MGFDDW004	Maryborough - Djandak Wi-Happy Tommy	5.5km N of Maryborough	DELWP	Spring	FRB	To modify the vegetation structure across the planned area to assist the promotion of grassy and herby understory.	LMZ	26.11	N
Central Goldfields	MGFMRY044	MARYBOROUGH - MOSQUITO TK	4.5km SE of Maryborough	DELWP	Spring	FRB	To develop fuel reduced areas of sufficient width and continuity to reduce the speed and intensity of bushfires.	LMZ	23.5	Y
Central Goldfields	MGFMRY046	MARYBOROUGH - STATION LANE	9.7km WSW of Maryborough	DELWP	Spring	FRB	To develop fuel reduced areas of sufficient width and continuity to reduce the speed and intensity of bushfires.	BMZ	132.4	N
Gannawarra	MGFCOH030	Bael Bael - Block 23	21km NW of Kerang	Parks Victoria	Autumn	ECO	To modify the vegetation structure across the planned area to assist the promotion of Northern Plains Grassland.	LMZ	85.34	Y
Gannawarra	MGFCOH029	Bael Bael - Block 6	21.7km NW of Kerang	Parks Victoria	Autumn	ECO	To modify the vegetation structure across the planned area to assist the promotion of Northern Plains Grassland.	LMZ	204.98	Y
Gannawarra	MGFBB007	Barapa Barapa - Flannerys	10.6km W of Leitchville	Parks Victoria	Autumn	FRB	In recent years this site has come under the care of Barapa Land care group and Barapa Land and Water. This has resulted in the removal of a large number of weeds on site as well as well as other biomass which require removal.	LMZ	50.64	Y
Gannawarra	MGFCOH038	Cohuna - Barapa Iron Punt Tk	8.5km NW of Cohuna	Parks Victoria	Autumn	FRB	To modify the vegetation abundance across the planned area to assist the control of Riverine Woodland/Forest.	NZ	1.80	N
Greater Bendigo	MGFDDW021	DDW Myers Flat - Nerring Trk	6.8km NW of Myers Flat	DELWP	Autumn	FRB	To modify the vegetation structure across the planned area to assist in the seeding and regeneration of rare and culturally important (Chocolate Lillies, Bulbine Lillies, Lomandra and Dianella).	LMZ	95.95	Y

Greater Bendigo	MGFHTH008	Heathcote - Dargile Tk	6KM NNE OF HEATHCOTE	Parks Victoria	Spring	FRB	To develop fuel reduced areas of sufficient width and continuity to reduce the speed and intensity of bushfires.	BMZ	172.50	N
Greater Bendigo	MGFHTH027	Heathcote - Hedleys Dam Tk	3.5km S of Heathcote	Parks Victoria	Spring	FRB	To develop fuel reduced areas of sufficient width and continuity to reduce the speed and intensity of bushfires.	BMZ	91.25	N
Greater Bendigo	MGFBGO049	Huntly - Viola Rd	1.2KM NE of Huntly	DELWP	Spring	FRB	To provide a high level of strategic protection to human life, property and highly valued assets.	APZ	2.49	N
Greater Bendigo	MGFBGO055	Kimbolton - Airport Track	2.7km NE of Kimbolton	DELWP	Autumn	FRB	To develop fuel reduced areas of sufficient width and continuity to reduce the speed and intensity of bushfires.	BMZ	124.10	N
Greater Bendigo	MGFBGO086	Lockwood - Tarr Road	6.5km SW of Bendigo	Parks Victoria	Autumn	FRB	To build on protection works in the adjacent Asset Protection Zone.	BMZ	165.30	N
Greater Bendigo	MGFBGO030	Maiden Gully - Edwards Rd*	5.5KM WEST OF BENDIGO	Parks Victoria & PP	Spring	FRB	To provide the highest level of localised protection to human life, property and community assets identified as highly valued including East Bendigo.	APZ	115.80	N
Greater Bendigo	MGFBGO015	Sailors Gully - Sydney Flat	7.5km NW of Bendigo	Parks Victoria	Spring	FRB	To develop fuel reduced areas of sufficient width and continuity to reduce the speed and intensity of bushfires.	BMZ	188.90	Y
Greater Bendigo	MGFBGO067	Sedgwick - Kerrs Road	1.4km NE of Sedgwick	Parks Victoria	Autumn	FRB	To develop fuel reduced areas of sufficient width and continuity to reduce the speed and intensity of bushfires.	BMZ	169.08	N
Greater Bendigo	MGFDDW003	WHIPSTICK - DJANDAK WI - BRIGHTS LANE	6km NW of Huntly	Parks Victoria	Spring	FRB	To modify the vegetation structure across the planned area to assist the promotion of grassy and herby understory species.	BMZ	20.00	N
Hepburn	LM-MGF-CAS-0021	Denver - Ridge Rd	5.5km NE of Glenlyon	DELWP	Autumn	FRB	To develop fuel reduced areas of sufficient width and continuity to reduce the speed and intensity of	BMZ	286.08	N



							bushfires.			
Loddon	MGFDDW007	DDW - Boort Lake Lyndger	1.7km E of Boort	Parks Victoria	Autumn	FRB	To modify the vegetation structure across the planned area to assist in the seeding and regeneration of rare and culturally important native grassland species in Northern Victoria (Chocolate Lillies and Bulbine Lillies).	PBEZ	2.83	Y
Loddon	MGFDDW018	DDW - Woolshed Swamp	6km S of Boort	Parks Victoria	Autumn	FRB	To modify the vegetation structure across the planned area to assist in the seeding and regeneration of rare and culturally important native grassland species in Northern Victoria (Chocolate Lillies, Bulbine Lillies, Lomandra and Dianella).	PBEZ	421.54	Y
Loddon	MGFING060	DDW Ngarri - Mt Egbert	8km ESE of Whychitella	Parks Victoria	Spring	FRB	To modify the vegetation structure across the planned area to assist the promotion of grassy woodland ecosystem.	LMZ	134.96	N
Loddon	MGFING059	Inglewood – Reservoir*	2km North of Inglewood	DELWP	Spring	FRB	To develop a fuel reduced area to the North of the Inglewood township.	BMZ	30.83	N
Loddon	MGFMRY036	Laanecoorie - Laane Tk	3km NW of Laanecoorie	DELWP	Spring	FRB	To develop fuel reduced areas of sufficient width and continuity to reduce the speed and intensity of bushfires.	BMZ	224.40	N
Loddon	MGFCOH036	TTNP - CREEK STH WEST	12km NE of Mitiamo	Parks Victoria	Autumn	ECO	To manipulate vegetation to provide more suitable habitat for the plains wanderer resulting in a higher quality grassland.	LMZ	57.34	Y
Loddon	MGFING039	WEDDERBURN - PERMONA LANE	2.5km SW OF WEDDERBURN	DELWP	Spring	FRB	To develop fuel reduced areas of sufficient width and continuity to reduce the speed and intensity of bushfires.	BMZ	260.40	N
Macedon Ranges	MGFMAC003	Macedon - Bawden Rd	2km W of Mount Macedon	Parks Victoria	Autumn	FRB	To build on protection works in the adjacent Asset Protection Zone.	BMZ	162.73	N
Macedon Ranges	MGFMAC010	Macedon - Campey Rd	2km SW of Macedon	Parks Victoria	Autumn	FRB	To provide the highest level of localised protection to human life, property and community assets identified	APZ	94.00	N

							as highly valued including Macedon.			
Macedon Ranges	MGFMAC001	Macedon - Heaps	3km S of Heskett	Parks Victoria	Winter	WINDROW/HEAPS	Burn piles of debris created from land management works ie weed removal	LMZ	1.00	Y
Macedon Ranges	MGFMAC002	Macedon - Turner Av	4.5km SE of Woodend	Parks Victoria	Spring	FRB	To develop a fuel reduced area to the South of Braemar College.	BMZ	61.31	N
Mount Alexander	MGFCAS003	Castlemaine - Kalimna Park	500M E of Castlemaine	Parks Victoria	Autumn	FRB	To develop fuel reduced areas of sufficient width and continuity to reduce the speed and intensity of bushfires.	BMZ	34.1	N
Mount Alexander	MGFDDW010	DDW - Fryers Village - White Quartz Rd*	1.8km S of Fryerstown	Private	Autumn	FRB	Healing country and promotion of food and fibre plants.	NZ	7.17	Y
Mount Alexander	MGFCAS071	Maldon - Heaps	100m S of Maldon	Parks Victoria	Winter	WINDROW/HEAPS	Burn piles of debris created from land management works ie weed removal	APZ	42.00	Y
Mount Alexander	MGFCAS036	National Fire Investigation Training - Castlemaine	2.5KM NW OF CASTLEMAINE	DELWP	Spring	FRB	Small plots within a two (2) hectare burn site to be burnt. This is within a large area that is previously burnt and had unburnt plots left in the middle.	BMZ	10.31	N
Mount Alexander	MGFCAS035	National Fire Investigation Training Escape Track - Barkers Creek	3km N of Castlemaine	DELWP	Spring	FRB	To provide the highest level of localised protection to human life, property and community assets identified as highly valued including Castlemaine residents while achieving training outcomes for fire investigation.	APZ	24.20	N
Mount Alexander	MGFCAS069	Newstead - Bruces Tk	1.6km N of Newstead	DELWP	Spring	FRB	To develop fuel reduced areas of sufficient width and continuity to reduce the speed and intensity of bushfires.	BMZ	125.12	N
Mount Alexander	MGFCAS017	Taradale - Plantation Track	2.8km E of Taradale	Parks Victoria	Autumn	FRB	To provide bushfire protection outcomes by reducing overall fuel hazard and bushfire hazard in the landscape.	LMZ	39.05	N
Northern Grampians	MGFSTA030	St Arnaud - Tower Tk	2km WNW of St Arnaud	Parks Victoria	Spring	FRB	To build on protection works in adjacent asset protection zone and provide risk reduction to St Arnaud	BMZ	81.07	Y

							township.			
Pyrenees	MGFAVO021	Avoca - Cross Track	15KM WEST OF AVOCA	DELWP	Autumn	FRB	To develop fuel reduced areas of sufficient width and continuity to reduce the speed and intensity of bushfires.	BMZ	250.39	N
Pyrenees	MGFAVO024	Landsborough – Barkly Tk	9.2km ESE of Landsborough	Parks Victoria	Spring	FRB	To develop fuel reduced areas of sufficient width and continuity to reduce the speed and intensity of bushfires.	BMZ	504.88	N
Pyrenees	MGFAVO025	Murray Goldfields - 172-501-0107 - Tea Break	15.9km W of Avoca	DELWP	Autumn	REGEN LEMS	To reduce overall biomass and hazard on the coupe before and after thinning.	LMZ	34.10	Y
Pyrenees	MGFSTA004	REDBANK - DIGGERS TK	3.5KM WNW OF REDBANK	Parks Victoria	Autumn	FRB	To develop fuel reduced areas of sufficient width and continuity to reduce the speed and intensity of bushfires.	BMZ	727.20	N

## DELWP Lead Agency Planned Burns 2019/20

Local Government Area	Burn Number	Burn Name	General Location	Land Manager	Burn Season	Burn Type (FRB/ECO)	Land Management Objective	FMZ	Planned Burn Size (ha)	New Burn (New/)
Central Goldfields	LM-MGF-MRY-0020	Bealiba - LMB BEALIBA BARP SF	6km NE of Bealiba	DELWP	Autumn	FRB	To modify the vegetation abundance across the planned area to assist the promotion of Ironbark/Box.	LMZ	4847.37	N
Central Goldfields	LM-MGF-MRY-0017	Mount Hooghly - White Tk	3km SW of Dunolly	DELWP	Autumn	FRB	To develop fuel reduced areas of sufficient width and continuity to reduce the speed and intensity of bushfires.	BMZ	160.61	N
Central Goldfields	MGFMRY065	Mt Hooghly - Mt Hooghly Trk	4.8km SW of Dunolly	DELWP	Autumn	FRB	To develop fuel reduced areas of sufficient width and continuity to reduce the speed and intensity of bushfires.	BMZ	147.88	Y
Central Goldfields	MGFMRY047	TALBOT - MOSCHETTI TK	5km W of Talbot	Parks Victoria	Spring	FRB	To develop fuel reduced areas of sufficient width and continuity to reduce the speed and intensity of bushfires.	BMZ	100.99	N
Central Goldfields	MGFMRY048	Talbot - Quarry Tk	4km SW of Talbot	Parks Victoria	Spring	FRB	To develop fuel reduced areas of sufficient width and continuity to reduce the speed and intensity of bushfires.	BMZ	116.54	N
Gannawarra	MGFBB006	Barapa Barapa - Budgerum SSR	1km N of Budgerum	Water Authority	Autumn	FRB	Management and restoration of food and fibre plants in situ	NZ	18.20	Y
Greater Bendigo	MGFBGO101	Big Hill - Channel Tk	3.2km SSE of Kangaroo Flat	Parks Victoria	Spring	FRB	To develop fuel reduced areas of sufficient width and continuity to reduce the speed and intensity of bushfires.	BMZ	24.13	N
Greater Bendigo	MGFBGO098	Big Hill - Tower	2.6km SSE of Big Hill	Parks Victoria	Spring	FRB	To provide the highest level of localised protection to human life, property and community assets identified as highly valued including the telecommunications towers.	PBEZ	0.88	N
Greater Bendigo	LM-MGF-HTH-0006	Costerfield - Hall Tk	5.2km NE of Costerfield	Parks Victoria	Autumn	FRB	To develop fuel reduced areas of sufficient width and continuity to reduce the speed and intensity of bushfires.	BMZ	372.41	N
Greater Bendigo	MGFDDW011	DDW - Huntly SSR	2 km W of Huntly	Parks Victoria	Spring	FRB	To modify the vegetation structure across the planned area to assist in the seeding and regeneration of rare and culturally important native grassland species in Northern Victoria (kangaroo grass, murnang and dianella).	LMZ	216.94	Y
Greater Bendigo	MGFDDW014	DDW - Mandurang South Leangarook Trk	12.5km S of Bendigo	Parks Victoria	Spring	FRB	To burn areas of built up biomass to allow open space for targeted species to grow, regenerate and flower. and for Ceremonial purpose and the repatuated burial site	LMZ	143.22	Y
Greater Bendigo	MGFDDW019	DDW Hunter - Elmore-Cohuna	10km WNW of Elmore	Parks Victoria	Autumn	FRB	To modify the vegetation structure across the planned area to assist in the seeding and	NZ	3.25	Y

		rail line BR					regeneration of rare and culturally important native grassland species in Northern Victoria (kangaroo grass, murnang and dianella).			
Greater Bendigo	MGFBGO074	EAGLEHAWK - LIGHTNING HILL	1.5km N of Eaglehawk	Parks Victoria	Spring	FRB	To provide the highest level of localised protection to human life, property and community assets identified as highly valued including Eaglehawk.	APZ	167.80	Y
Greater Bendigo	MGFHTH009	Heathcote - Forest Drive	2.3km SE of Heathcote	Parks Victoria	Spring	FRB	To provide the highest level of localised protection to human life, property and community assets identified as highly valued including Heathcote.	APZ	156.21	N
Greater Bendigo	MGFHTH004	HEATHCOTE - MCIVOR RANGE	1KM ENE OF HEATHCOTE	Parks Victoria	Spring	FRB	To develop fuel reduced areas of sufficient width and continuity to reduce the speed and intensity of bushfires.	BMZ	141.57	N
Greater Bendigo	LM-MGF-BGO-0022	Huntly North - Millwood Rd	11.2km N of Huntly	Parks Victoria	Autumn	FRB	To develop fuel reduced areas of sufficient width and continuity to reduce the speed and intensity of bushfires.	BMZ	157.96	N
Greater Bendigo	BGO0148	Kamarooka - Hartlands Road	9.3km E of Raywood	Parks Victoria	Autumn	FRB	To provide bushfire protection outcomes by reducing overall fuel hazard and bushfire hazard in the landscape.	LMZ	112.60	N
Greater Bendigo	LM-MGF-BGO-0030	Kangaroo Flat - Tipperary Ln	1.4km SE of Kangaroo Flat	Parks Victoria	Spring	FRB	To develop fuel reduced areas of sufficient width and continuity to reduce the speed and intensity of bushfires.	BMZ	32.20	N
Greater Bendigo	MGFBGO060	Maiden Gully - Hermitage Rd Block 2*	2.3km W of Maiden Gully	Private	Autumn	FRB	To provide bushfire protection outcomes by reducing overall fuel hazard and bushfire hazard in the landscape.	NZ	63.30	Y
Greater Bendigo	LM-MGF-BGO-0024	Whipstick - Whipstick Rd	3.5km N of Eaglehawk	Parks Victoria	Spring	FRB	To develop fuel reduced areas of sufficient width and continuity to reduce the speed and intensity of bushfires.	BMZ	135.32	N
Hepburn	MGFCAS071	Denver - Eyles Lane	6km NE of Glenlyon	DELWP	Autumn	FRB	To develop fuel reduced areas of sufficient width and continuity to reduce the speed and intensity of bushfires.	BMZ	162.77	Y
Loddon	MGFDDW012	DDW - Lake Boort	1.6km S of Boort	Parks Victoria	Autumn	FRB	To modify the vegetation structure across the planned area to assist in the seeding and regeneration of rare and culturally important native grassland species in Northern Victoria (Chocolate Lillies and Bulbine Lillies).	NZ	24.80	Y
Loddon	MGFING055	Wedderburn - Holts Lane	3km SSW of Wedderburn	Parks Victoria	Spring	FRB	To provide bushfire protection outcomes by reducing overall fuel hazard and bushfire hazard in the landscape.	BMZ	201.73	N
Macedon Ranges	LM-MGF-MAC-0007	Benloch - Feeneys Ln	10.2km NW of Lancefield	Parks Victoria	Autumn	FRB	To provide bushfire protection outcomes by reducing overall fuel hazard and bushfire hazard in the landscape.	NZ	19.36	N
Macedon Ranges	LM-MGF-MAC-0005	Cobaw - Alcorns Tk	14km E of Kyneton	DELWP	Autumn	FRB	To develop fuel reduced areas of sufficient width and continuity to reduce the speed and intensity of bushfires.	BMZ	20.52	N
Macedon Ranges	LM-MGF-MAC-0006	Macedon - Waterworks Rd	4.3km E of Woodend	Parks Victoria	Autumn	FRB	To provide the highest level of localised protection to human life, property and community assets identified	APZ	30.27	N

							as highly valued including Braemar College.			
Mount Alexander	MGFCAS070	Fryerstown - Vaughan-Chewton Rd	2km N of Fryerstown	Parks Victoria	Autumn	FRB	To develop a fuel reduced corridor West of the Vaughn-Chewton Rd and North of Fryerstown township.	BMZ	95.60	Y
Mount Alexander	LM-MGF-CAS-0018	Gower - Smiths Reef Tk	3.2km SE of Maldon	Parks Victoria	Autumn	FRB	To develop fuel reduced areas of sufficient width and continuity to reduce the speed and intensity of bushfires.	BMZ	25.66	N
Mount Alexander	MGFCAS061	Walmer - Reillys Tk	3.6km North of Castlemaine	DELWP	Spring	FRB	To provide the highest level of localised protection to human life, property and community assets identified as highly valued including Castlemaine.	APZ	55.34	N
Northern Grampians	MGFSTA022	St Arnaud - Wattle Street	0.9km W of St Arnaud	Parks Victoria	Autumn	FRB	To provide the highest level of localised protection to human life, property and community assets identified as highly valued including St Arnaud.	APZ	13.25	N
Pyrenees	LM-MGF-AVO-0010	Percydale - Fiddlers Tk	8.5km NW of Avoca	Parks Victoria	Autumn	FRB	To develop fuel reduced areas of sufficient width and continuity to reduce the speed and intensity of bushfires.	BMZ	265.09	N
Pyrenees	LM-MGF-AVO-0009	Redbank - Richmond Tk	2.5km SE of Redbank	Parks Victoria	Autumn	FRB	To develop fuel reduced areas of sufficient width and continuity to reduce the speed and intensity of bushfires.	BMZ	358.11	N
Strathbogie	LM-MGF-HTH-0009	Redcastle - Paveys Rd	8.4km NE of Costerfield	DELWP	Spring	FRB	To develop fuel reduced areas of sufficient width and continuity to reduce the speed and intensity of bushfires.	LMZ	99.61	N

## DELWP Lead Agency Planned Burns 2020/21

Local Government Area	Burn Number	Burn Name	General Location	Land Manager	Burn Season	Burn Type (FRB/ECO)	Land Management Objective	FMZ	Planned Burn Size (ha)	New Burn (New/ )
Campaspe	MGFYY002	Yorta Yorta - Gaynor Swamp	6.5km SSE of Corop	Parks Victoria	Autumn	FRB	To modify the vegetation structure across the planned area to assist in the seeding and regeneration of rare and culturally important native grassland species	LMZ	420.99	Y
Campaspe	MGFYY005	Yorta Yorta - Kow Swamp	8.5km NW of Gunbower	Water Authority	Autumn	FRB	To modify the vegetation structure across the planned area to assist in the seeding and regeneration of rare and culturally important native grassland species	NZ	494.37	Y
Campaspe	MGFYY004	Yorta Yorta - Wallanjoe Swamp	7.4km SE of Corop	Parks Victoria	Autumn	FRB	To modify the vegetation structure across the planned area to assist in the seeding and regeneration of rare and culturally important native grassland species	LMZ	433.15	Y
Central Goldfields	LM-MGF-MRY-0019	Maryborough - Pigeon Gully Tk	3.5km NE of Maryborough	DELWP	Spring	FRB	To develop fuel reduced areas of sufficient width and continuity to reduce the speed and intensity of bushfires.	BMZ	47.97	N
Central Goldfields	MGFMRY028	Maryborough - Prices Rd	3KM NE OF MARYBOROUGH TOWNSHIP	DELWP	Spring	FRB	To develop fuel reduced areas of sufficient width and continuity to reduce the speed and intensity of bushfires.	BMZ	52.64	N
Central Goldfields	LM-MGF-MRY-0013	Maryborough - Reserve Tk	4km SW of Talbot	Parks Victoria	Spring	FRB	To provide the highest level of localised protection to human life, property and community assets identified as highly valued including Maryborough.	BMZ	79.37	N
Central Goldfields	MGFMRY026	Maryborough - Telegraph Tk	1.5KM ENE OF MARYBOROUGH TOWNSHIP	DELWP	Spring	FRB	To provide the highest level of localised protection to human life, property and community assets identified as highly valued including Maryborough.	APZ	143.50	N
Central Goldfields	LM-MGF-MRY-0015	Moliagul - Monument Road	1km W of Moliagul	Parks Victoria	Autumn	FRB	To provide bushfire protection outcomes by reducing overall fuel hazard and bushfire hazard in the landscape.	LMZ	64.48	N
Gannawarra	MGFBB008	Barapa Barapa - Kerang - Whites lane	2.6km N of Kerang	Parks Victoria	Autumn	ECO	Management and restoration of food and fibre plants in situ	LMZ	38.71	Y
Gannawarra	MGFBB009	Barapa Barapa - Loddon River	6.3km N of Kerang	Parks Victoria	Autumn	ECO	Management and restoration of food and fibre plants in situ	NZ	159.79	Y
Greater Bendigo	MGFDDW013	DDW – Mandurang Bubbs Tk	7.1km SSE of Bendigo		Spring	FRB	To modify the vegetation structure across the planned area to assist in the seeding and regeneration of rare and culturally important native species Victoria (kangaroo grass, murnang and dianella).	NZ	126.19	Y
Greater Bendigo	LM-MGF-BGO-0027	Kimbolton - Tracey Tk	1km E of Kimbolton	DELWP	Autumn	FRB	To build on protection works in the adjacent Asset Protection Zone.	BMZ	200.96	N
Greater Bendigo	MGFBGO024	Strathdale - Wildflower Dr	5KM SE OF BENDIGO	Parks Victoria	Spring	FRB	To provide the highest level of localised protection to human life, property and community assets identified	APZ	306.43	N

							as highly valued including Strathdale.			
Greater Bendigo	LM-MGF-BGO-0025	Wellsford - Tresize Track	3.5km N of Junortoun	Parks Victoria	Spring	FRB	To develop fuel reduced areas of sufficient width and continuity to reduce the speed and intensity of bushfires.	BMZ	168.58	N
Hepburn	MGFDDW009	DDW - Clunes-Campbelltown Rd	1.7km N of Clunes	DELWP	Autumn	FRB	Management of Food and Fibre plants in situ and restoration of food and fibre (specifically yam daisy and kangaroo grass)	NZ	360.60	Y
Loddon	MGFDDW015	DDW - Tang Tang Swamp	4.5km E of Dingee	Parks Victoria	Autumn	FRB	To modify the vegetation structure across the planned area to assist in the seeding and regeneration of rare and culturally important native grassland species in Northern Victoria (Chocolate Lillies, Bulbine Lillies, Lomandra and Dianella).	LMZ	128.52	Y
Loddon	MGFDDW016	DDW - Thunder Swamp	7.5km SE of Dingee	Parks Victoria	Autumn	FRB	To modify the vegetation structure across the planned area to assist in the seeding and regeneration of rare and culturally important native grassland species in Northern Victoria (Chocolate Lillies, Bulbine Lillies).	LMZ	87.65	Y
Loddon	MGFDDW020	DDW Mysia - Old Boort Rd	3km SW of Mysia	Parks Victoria	Autumn	FRB	To modify the vegetation structure across the planned area to assist in the seeding and regeneration of rare and culturally important native grassland species in Northern Victoria (murnang and dianella).	LMZ	7.58	Y
Loddon	MGFING056	Inglewood - Rheola Rd	5km SW of Inglewood	Parks Victoria	Autumn	FRB	To provide bushfire protection outcomes by reducing overall fuel hazard and bushfire hazard in the landscape.	BMZ	447.79	N
Loddon	LM-MGF-ING-0012	Kingower - Mackenzies Gully Rd	1km SW of Kingower	DELWP	Autumn	FRB	To provide the highest level of localised protection to human life, property and community assets identified as highly valued including Kingower.	APZ	41.98	N
Mount Alexander	MGFCAS043	Castlemaine - Colles Rd	3km NE of Castlemaine	Parks Victoria	Winter	FRB	To provide the highest level of localised protection to human life, property and community assets identified as highly valued including Castlemaine.	APZ	31.09	N
Mount Alexander	LM-MGF-CAS-0015	Gower - Clarrys Tk	5km SE of Maldon	Parks Victoria	Autumn	FRB	To develop fuel reduced areas of sufficient width and continuity to reduce the speed and intensity of bushfires.	BMZ	38.84	N
Northern Grampians	MGFSTA029	Dalyenong - Emu Rd	12km W of Bealiba	Parks Victoria	Autumn	ECO	To modify the vegetation structure across the planned area to assist the promotion of Healthy Woodland.	LMZ	273.07	N
Pyrenees	LM-MGF-AVO-0011	Glenpatrick - Gollop Tk	10.1km W of Avoca	DELWP	Autumn	FRB	To develop fuel reduced areas of sufficient width and continuity to reduce the speed and intensity of bushfires.	BMZ	729.46	N
Pyrenees	MGFAVO014	Redbank - Long Gully Tk	1.5KM SW OF REDBANK	Parks Victoria	Spring	FRB	To develop fuel reduced areas of sufficient width and continuity to reduce the speed and intensity of bushfires.	BMZ	402.82	N



## SCHEDULE 2: NON-BURN FUEL TREATMENTS 2018/19 - DELWP Lead Agency

The table below contains a summary of proposed non-burn fuel treatments over the following year. Some of these fuel treatments are annual, with others prioritised based on the seasonal conditions and which planned burns are scheduled. Accompanying maps provide detail on where these fuel treatment activities are located. Note that the maps show approximate areas only and the actual treatment area will be dependent on the condition of the fuels at the time of assessment. Please contact your local DELWP or Parks Victoria office if further detail is required.

<b>Works by Land Manager</b>	<b>Parks Victoria (ha)</b>	<b>DELWP (ha)</b>	<b>Other (ha)</b>
Hectares Planned	1918	2305	544

**SCHEDULE 3: NEW STRATEGIC FUELBREAKS 2018/19 - DELWP Lead Agency**

DELWP and Parks Victoria work together to establish and maintain a network of strategic fuelbreaks to expand the protection of communities, forests and parks from the risk of bushfire. A strategic fuelbreak is a strip of land where vegetation has been modified to reduce the amount of fuel available to burn during a bushfire. Strategic fuelbreaks are an important tool for fire management on public land. They provide a fuel-reduced area from which to conduct back burning ahead of an approaching bushfire or to assist in the implementation of a planned burn.

Machinery is used to clear vegetation generally within a 15-20-metre-wide strip. In some instances, this width could be up to 40m. Existing roads and tracks are considered part of the clearing. Where possible, overstorey trees are retained to provide shading and connection between the trees for wildlife and landscape values. The locations of strategic fuelbreaks are included for information only. These activities are approved via other DELWP and Parks Victoria processes. CFA strategic fuel breaks are included in Municipal Fire Management Plans.

Strategic fuel break maintenance is an annual program and included in Schedule 2 above.

Road or Location Name	Locality	Operation Type	Distance (km)

## CFA LEAD AGENCY DISTRICT 2 SCHEDULE

### SCHEDULE 1: PLANNED BURNS

The activities in this schedule are planned burns.

Please note that the planned burn year and season identified for each planned burn is indicative only and may be changed due to weather conditions and operational requirements.

**Abbreviations in Schedule1:** \*\* asterisk on burn name denotes a cross tenure burn; COM - Committee of Management; PP – Private Property; FRB - Fuel Reduction Burn; ECO - ecological burn;

### CFA Lead Agency Planned Burns 2018/19

Local Government Area	Burn Number	Burn Name	General Location	Land Owner/Manager (FOR INTERNAL USE ONLY)	Burn Season	Burn Type (FRB/ECO)	Land Management Objective	Planned Burn Size (ha)	Planned Burn Size (km)
Greater Bendigo		12A Lupson Court - Maiden Gully	4.9kms W of Bendigo						
Greater Bendigo		Back Creek - Quarry Hill	1.5kms SSE of Bendigo			ECO	Native grass planting site		
Greater Bendigo		Campbells Road - Redesdale	1.8kms SW of Redesdale						
Greater Bendigo	MGFDDW008	DDW – Knight St *	2.7km N of Bendigo	COM	Autumn	ECO	To introduce fire into a long unburnt landscape and enhance the re-establishment of native species with the intent also of developing the site back to a natural regime which supports native fauna and flora species	4.20	
Greater Bendigo	D02-17-007	Huntly Training Campus	4.4kms NE of Huntly	CFA	Spring	FRB	Fuel reduce the area within the campus to mitigate the likelihood spread of bushfires and provide safety for people and assets within the training complex.	13.3	
Greater Bendigo	D02-16-001	Marong Landry Lane	13.7kms W of Bendigo	Council	Spring	FRB	To mitigate the spread of wildfire and provide a fire break along the western side of the caravan park and residential area.		2.6
Greater Bendigo	D02-17-006	Marong Powers Road	18kms W of Bendigo	Council	Spring	ECO	Reduce the biomass of introduced grasses outcompeting the identified native flora	0.7	
Greater Bendigo		Mcniffs Road - Redesdale	1.7kms SW of Redesdale						
Greater Bendigo	D02-18-004	Nth Redesdale Rd	2.8kms NW of Redesdale	Council	Spring	FRB	Provide a fire break along the	1.3	2.4

							western side of the road, improving the safety of road users exiting the area in the event of a fire.		
Greater Bendigo		O'Keefe Rail Trail (several sections)							
Greater Bendigo	D02-17-005	Rileys Road - Woodvale	12kms NW of Bendigo		Spring	ECO	Reduce the presence of African lovegrass and provide some strategic break from fire entering into the Woodvale area	2	
Greater Bendigo		Ritchie Drive Reserve - Kangaroo Flat	6.4kms SW of Bendigo						
Greater Bendigo		Spring Road - Sedgwick	13km S of Bendigo	Private	Spring	FRB	Provide a fuel reduced area beside adjoining properties and houses and limit the intensity and spread of a wildfire	18	
Greater Bendigo		Symbester Crescent - Eaglehawk	5.8kms N of Bendigo						
Greater Bendigo		Tooks Road - Redesdale	2.8kms SW of Redesdale						
Macedon Ranges		Cnr Alpine Ave and Black Forest Dr - Macedon	1.4kms NW of Macedon			FRB			
Macedon Ranges	D02-17-109	Darraweit Guim School	Darraweit Guim township	Council	Summer	FRB	To remove ribbon bark from eucalypt trees and also ground fuels to decrease the impact on school and township during running grassfire from the north.	0.68	
Macedon Ranges	D02-17-105	Kennedys Land (East Side) & Newlands Rd (North Side)	12.2kms ENE of Riddells Creek	Council	Summer	FRB	To create burnt break on east side of Kennedys Lane and north side of Newlands Rd as part of MFMP to assist brigade with extinguishing running grass fires.	2	2
Macedon Ranges		Kilmore Rd Eastern end - Riddells Creek	3kms NE of Riddells Creek		Autumn	FRB			
Macedon Ranges		Kilmore Rd- Markhams Ln - Riddells Creek	900m SW of Riddells Creek		Spring				
Macedon Ranges		Kilmore Rd Western End - Riddells Creek	2.7kms WSW of Riddells Creek		Spring	FRB			
Macedon Ranges		Malmsbury Common - Conservation	700m NW of Malmsbury		Autumn	ECO			
Macedon Ranges		Mount Aitken - Gisborne South	8kms SE of Gisborne		Spring	ECO			
Macedon Ranges	D02-17-101	Stanley Park	2.3kms NE of Macedon	Council	Autumn	ECO	Stimulate growth of native grass	0.3	

		Grasslands					species.		
Macedon Ranges		Sutherlands Rd - Riddells Creek	1km E of Riddells Creek	V/Line	Spring	FRB	Create a buffer in conjunction with the adjacent railway line to protect local residents and Riddells Creek township. Also reduce the impact on telecommunications infrastructure and the Bendigo-Melbourne railway line,		0.8
Macedon Ranges		UL Daly Nature Reserve	500m S of Gisborne		Autumn	ECO			
Macedon Ranges		Websters Rd - Riddells Creek	4.5kms SE of Riddells Creek	V/Line	Autumn	ECO	To reduce the biomass and promote the growth of native vegetation such as Matted Flax-lily, Purple Diurus, Small Milkwort and Golden Sun Moth. Also reduce the presence of weed species such as Blackberry, Serrated Tussock and Chilean Needlegrass.		2.7
Macedon Ranges	MGFMAC015	Woodend - Forest St*	500m NW of Woodend	COM	Autumn	FRB	To develop fuel reduced areas of sufficient width and continuity to reduce the speed and intensity of bushfires.		
Macedon Ranges		Woodend Grassland - Zone B and C	800m NW of Woodend		Autumn & Spring	ECO			
Mount Alexander		Baringhup West	3kms W of Baringhup			FRB			
Mount Alexander	D02-18-004	Blanket Gully Rd Campbells Crk	4.4kms S of Castlemaine	Private	Spring	FRB	To create a fuel reduced area by removing the overall fuel load over the treatment area by at least 80%	1	
Mount Alexander	D02-17-004	Guildford - Little Fryers Street	10.5kms SSW of Castlemaine	Council	Autumn	FRB	Reduce by at least 80% the available grass fuels.	0.1	0.2
Mount Alexander	D02-17-009	Levy Bank Newstead	400m W of Newstead	Council	Spring	FRB	To create a fuel reduced strategic fire break by removing the overall fuel load over the treatment area by at least 80%	1	0.5
Mount Alexander	D02-18-003	Meins Lane Guildford	9.1kms SSW if Castlemaine	Council	Autumn	ECO	Achieve biomass management and undertake monitoring of sites to help inform the future management 0.4ha / 0.4kms		
Mount Alexander	D02-17-008	Midland Hwy Guildford	11.3kms SSW of Castlemaine	VicRoads	Spring	FRB	To create a fuel reduced strategic fire break by removing the overall fuel load over the treatment area by at least 80%	0.6	0.65
Mount Alexander	D02-17-010	Rotunda Park Newstead	400m NE of Newstead	Council	Spring	FRB	To create a fuel reduced area by reducing the overall fuel load over the treatment area by at least 80%	1	





## CFA LEAD AGENCY DISTRICT 18 SCHEDULE

### SCHEDULE 1: PLANNED BURNS

The activities in this schedule are planned burns.

Please note that the planned burn year and season identified for each planned burn is indicative only and may be changed due to weather conditions and operational requirements.

**Abbreviations in Schedule1:** \*\* asterisk on burn name denotes a cross tenure burn; COM - Committee of Management; PP – Private Property; FRB - Fuel Reduction Burn; ECO - ecological burn;

### CFA Lead Agency Planned Burns 2018/19

Local Government Area	Burn Number	Burn Name	General Location	Land Owner/Manager (FOR INTERNAL USE ONLY)	Burn Season	Burn Type (FRB/ECO)	Land Management Objective	Planned Burn Size (ha)	Planned Burn Size (km)
Buloke	D18-18-001	Calder Highway - Wycheproof	13.7kms N of Wycheproof	V/Line & VicRoads	Spring	FRB	Create a fuel reduced break along the road-rail reserve to reduce the likelihood of fire spreading across the highway and reduce the potential impact on highway vehicle traffic.	21	14
Buloke		Wycheproof - Dempsey Street							
Mildura	D18-17-002	Calder Hwy Nth Ouyen	1.4kms N of Ouyen	VicRoads	Spring	FRB	Reduce fuel load to mitigate the likelihood of wildfire spreading along the roadside into the Ouyen township area	1.4	
Swan Hill	D18-17-003	2526 Murray Valley Highway Vinifera	2kms S of Nyah	Private	Spring	FRB	To reduce overall fuel hazard across the area delineated on the attached plan to Moderate over 90% of the burn area	6.1	







## CFA LEAD AGENCY DISTRICT 20 SCHEDULE

### SCHEDULE 1: PLANNED BURNS

The activities in this schedule are planned burns.

Please note that the planned burn year and season identified for each planned burn is indicative only and may be changed due to weather conditions and operational requirements.

**Abbreviations in Schedule1:** \*\* asterisk on burn name denotes a cross tenure burn; COM - Committee of Management; PP – Private Property; FRB - Fuel Reduction Burn; ECO - ecological burn;

### CFA Lead Agency Planned Burns 2018/19

Local Government Area	Burn Number	Burn Name	General Location	Land Owner/Manager (FOR INTERNAL USE ONLY)	Burn Season	Burn Type (FRB/ECO)	Land Management Objective	Planned Burn Size (ha)	Planned Burn Size (km)
Campaspe	D20-18-003	Crossman Rd Tennyson	13.6 SE of Mitiamo	Council	Autumn	ECO	Remove by burning at least 80% of the grass fuels to allow monitoring of the recovery of the Primelea spinescens shrub	1.2	0.8
Campaspe	D20-17-007	Echuca Mitiamo Rd Kotta	78kms N of Lockington	Private	Spring	FRB	To remove 90% of the grass fuels on the paddocks before laser grading will be undertaken by a contractor	5	
Campaspe	D20-17-003	Jasper Rd Tennyson	14.4kms SE of Mitiamo	Council	Autumn	ECO	To remove by burning at least 80% of the grass fuels to allow monitoring of hte recovery of hte Primelea spinescens shrub	1.2	0.8
Campaspe		Lake Cooper North	12.3kms SE of Rochester		Autumn	FRB	Fuel reduction		
Campaspe	D20-17-005	Plain Road Colbinabbin	20kms W of Rushworth	Council	Spring	FRB	Create an effective firebreak and enhanced protection from wildfire to the west of the Colbinabbin township	2	1
Campaspe		Stanhope-Rushworth Road	6.6kms N of Rushworth		Spring	FRB	Fuel reduction		
Loddon	D20-18-001	Bendigo Mitiamo Rd	500m S of Mitiamo	VicRoads	Autumn	FRB	To mitigate the spread of bushfire and provide protection for rail and road users by reducing the available fuels in the zone between the rail line and road	9.5	9
Loddon	D20-17-002	Black Bridge Road Bridgewater	5.8kms SW of Bridgewater	Private	Autumn	FRB	Burn at least 80% of the available fuel within the burn plan area to remove grass fuel loads and reduce the likelihood and spread of fire	100	
Loddon		Boort Railway Line	Boort township	Council	Spring	FRB	Burn 80% of the available grass fuel along the railway and roadside of the Boort-Quambatook Rd and Railway areas to mitigate the risk of fire spread into the	14	4

							northern area of the Boort township.		
Loddon	D20-18-004	Calder Hwy Bridgewater	1.5kms NW of Bridgewater	VicRoads & V/Line	Spring	FRB	To reduce the overall fuel hazard to low over 90% of the burn area, creating a fuel reduced buffer along the northern side of the Calder Highway in sections west of the Bridgewater township	3.5	3
Loddon		Kinypanial Woodshed Paddock South							
Loddon		Lawan - Wychitella	3.7kms ESE of Wychitella		Autumn	FRB	Fuel reduction - traditional owner		
Loddon		Nardoo Hills	3kms S of Wychitella		Autumn	FRB	Fuel reduction - traditional owner		
Loddon	D20-17-007	Rheola Roadside	17.6kms SW of Inglewood	Council	Spring	FRB	Burn 80% of the grass fuels along the roadside to mitigate the spread of wildfire and provide safer access and traffic movement for people and vehicles in the event of a fire	5	2
Loddon	D20-17-001	Walnut Ave Bridgewater	1km NW of Bridgewater	Private	Autumn	FRB	Burn at least 80% of the available fuel within the burn plan area to remove grass fuel loads and reduce the likelihood and spread of fire	1	





**SCHEDULE 2: NON-BURN FUEL TREATMENTS 2018/19 - CFA Lead Agency**

The table below contains a summary of proposed non-burn fuel treatments over the following year. Some of these fuel treatments are annual, with others prioritised based on the seasonal conditions and which planned burns are scheduled. Accompanying maps provide detail on where these fuel treatment activities are located. Note that the maps show approximate areas only and the actual treatment area will be dependent on the condition of the fuels at the time of assessment. Please contact your local CFA office if further detail is required.

Local Government Area	General Location	Land Owner/Manager (FOR INTERNAL USE ONLY)	Treatment Description	Area (ha)	Distance (km)

# Glossary

This glossary provides information on terms contained within the body of this document and the schedules.

**Burn Type** – indicates the primary purpose of the burn including fuel reduction burn (FRB), ecological burn (ECO).

**Burn Number and Name**– the unique identifier for each burn or planned fuel management activity.

**Cross-tenure burn** – burns that cover both public and private land

**Fire Management Zone (FMZ)** – an area of public land in which fire is managed for specific asset, fuel and ecological objectives. Values included in this column can be APZ - Asset Protection Zone; BMZ – Bushfire Moderation Zone; LMZ - Landscape Management Zone, PBEZ – Planned Burn Exclusion Zone; or, NZ -Not Zoned.

**Forest Fire Management Victoria (FFMVic)** - is the organisation that delivers services to achieve DELWP's legislated responsibilities. It consists of specialist staff from DELWP, Parks Victoria, Melbourne Water and VicForests.

**Indicative Burn Season** – indicates the preferred season in which the burn will be completed. Actual delivery may be any time of the year.

**Land Manager** – the organisation responsible for day-to-day management of the works site – DELWP (Department of Environment Land Water and Planning); PV (Parks Victoria).

**Land Management Objective** - identifies the desired land management outcome(s) of the burn.

**Local Government Area (LGA)** – the municipality in which the majority of the fuel management activity is located.

**Location** – a direction and distance of the planned burn from the nearest major township/locality.

**Planned Burns** - Planned burning is one of FFMVic and CFA's most important fire prevention activities. It involves the controlled application of fire during periods of lower fire risk, to achieve one of three main purposes: fuel reduction, ecological management and forest regeneration.

It is important to understand that planned burning operations, particularly fuel reduction burns, do not stop or eliminate the risk of bushfires. However, Victorian research, and similar information from other parts of Australia and overseas, clearly shows that firefighters have a much better chance of managing bushfires in areas where fuel reduction burns have been carried out.

Approved burns in this year's Plan will require a range of preparation works to make the planned area ready to ignite when the weather and other conditions are right. Preparation works may include, brushing up or grading of existing boundaries and internal tracks, management of hazardous trees, the construction and preparation of boundary and control lines with machinery and pest plant controls. The preparation works will have on-site inspections which will assess the surrounding assets and planned burn objectives.

**Private Property Burn** – burn that occurs wholly on private land.

**Planned Burn Size** – the maximum area of the fuel management activity measured in hectares (ha), including areas specifically excluded from disturbance.

**Strategic Fuelbreak:** A strategic fuelbreak is a strip of land where vegetation has been modified to reduce the amount of fuel available to burn during a bushfire.

**New Burn**– 'NEW' = New burn did not appear on last year's FFMVic JFMP. *Blank box* = Not a new burn. Burn was approved in the previous (2017/18- 2019/20) Fire Operations Plan but has not been carried out, it is included in this JFMP and may be conducted at any time.

**Non-Burn Fuel Treatments** – Non burn fuel treatments such as the maintenance and construction of fire control lines, fire access tracks, fuel breaks, fire infrastructure and other fuel management activities are required to support the planned burning program. Treatments to achieve these works can include slashing, pruning, chemical application (in alignment with safety standards), grazing or other operations (such as ploughing, mulching or rolling) that may be more appropriate or practical in certain areas. For example, fuel on small areas or blocks located within townships may be treated mechanically, where burning is impractical. These methods may also be more suitable in certain vegetation types.



**SAFER  
TOGETHER**



**FOREST FIRE  
MANAGEMENT VICTORIA**