

Joint Fuel Management Program 2021/22 – 2023/2024

Gippsland FFMVic Region
South East CFA Region



**FOREST FIRE
MANAGEMENT VICTORIA**

© The State of Victoria Department of Environment, Land, Water and Planning 2021



This work is licensed under a Creative Commons Attribution 4.0 International licence. You are free to re-use the work under that licence, on the condition that you credit the State of Victoria as author. The licence does not apply to any images, photographs or branding, including the Victorian Coat of Arms, the Victorian Government logo and the Department of Environment, Land, Water and Planning (DELWP) logo. To view a copy of this licence, visit <http://creativecommons.org/licenses/by/4.0/>

ISBN 978-1-76105-749-6 (Print)

ISBN 978-1-76105-750-2 (pdf/online/MS word)

Disclaimer

This publication may be of assistance to you, but the State of Victoria and its employees do not guarantee that the publication is without flaw of any kind or is wholly appropriate for your particular purposes and therefore disclaims all liability for any error, loss or other consequence which may arise from you relying on any information in this publication.

Accessibility

If you would like to receive this publication in an alternative format, please telephone the DELWP Customer Service Centre on 136186, email customer.service@delwp.vic.gov.au or via the National Relay Service on 133 677 www.relayservice.com.au. This document is also available on the internet at www.delwp.vic.gov.au.

Contents

Foreword	4
Joint Fuel Management Program	5
Our Objectives	7
Residual Risk	7
2021/22 – 2023/24 Joint Fuel Management Program.....	9
Planned burns	9
Non-burning fuel treatments	10
Strategic Fuel Breaks	11
Cultural Burning	14
Endorsement.....	15
Approval	15
How to become involved in the development of the Joint Fuel Management Program.....	15
Appendix (1): FFMVic Schedules of Activities	16
SCHEDULE 1: FFMVic LEAD LATROBE DISTRICT – PLANNED BURNING	16
SCHEDULE 2: FFMVic LEAD MACALISTER DISTRICT – PLANNED BURNING	23
SCHEDULE 3: FFMVic LEAD TAMBO DISTRICT – PLANNED BURNING.....	29
SCHEDULE 4: FFMVic LEAD SNOWY DISTRICT – PLANNED BURNING	36
Appendix (2): CFA Schedules of Activities	39
SCHEDULE 1: CFA LEAD DISTRICT 11 – PLANNED BURNING	39
SCHEDULE 2: CFA LEAD DISTRICT 10 – PLANNED BURNING	43
SCHEDULE 3: CFA LEAD DISTRICT 27 – PLANNED BURNING	47
SCHEDULE 4: CFA LEAD DISTRICT 09 – PLANNED BURNING	48
Glossary	51

Foreword

Working together, Forest Fire Management Victoria (FFMVic*) and the Country Fire Authority (CFA) have developed this Joint Fuel Management Program (JFMP) which covers the Gippsland FFMVic Region and South East CFA Region. It demonstrates our commitment to working more closely together to deliver the best bushfire risk reduction outcomes for Victorians.

The Joint Fuel Management Program is planned to achieve an integrated and risk-focused fuel management program across public and private land. It is designed to implement long-term bushfire management strategies that outline how the risk of bushfires is managed for the protection of life and property on public and private land, while maintaining and improving natural ecosystems.

In response to the devastating 2019/20 Black Summer bushfires and subsequent inquiries, the Victorian Government has committed to new programs which complement our current fuel management program and aim to reduce bushfire risk across all land tenure.

Strengthening and expanding Victoria's network of Strategic Fuel Breaks is one of the key actions designed to reduce the risk and impacts of more frequent, intense and damaging bushfires under a changing climate.

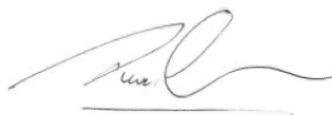
Investment will also be made on fuel management, targeting long grass and other flammable undergrowth, particularly along our major road and rail corridors. We will work together with Local Government Authorities and water, road and rail authorities to ensure that our works are complementary.

The following program has also been shaped by a variety of research and local information, such as specialist input from FFMVic, CFA staff and volunteers and key industries, as well as knowledge from local communities, including Traditional Owners and key stakeholders. We would like to recognise the work that has been put into developing this Joint Fuel Management Program, by FFMVic, CFA and the local communities.

We encourage your continued input to ensure our plans protect those assets and values which are important to all Victorians.



Geoff Conway
Deputy Chief Fire Officer
DELWP Gippsland Region



Trevor Owen
Deputy Chief Officer
CFA South East Region

* Forest Fire Management Victoria (FFMVic) – is the organisation that delivers services to achieve DELWP's legislated responsibilities. It consists of specialist staff from DELWP, Parks Victoria, Melbourne Water and VicForests.

Joint Fuel Management Program

This Joint Fuel Management Program (JFMP) lists fuel management activities in the Gippsland Department of Environment, Land, Water and Planning (DELWP) Region and the South East CFA Region only.

It covers Latrobe, Macalister, Tambo and Snowy DELWP Districts and CFA Districts 11, 10, 9 and 27 (Map 1).

The schedules contained within this document set out where and when activities are planned to occur for the period from 2021/22 to 2023/24. The planned activities are listed by Lead Agency.

To view all fuel management works in your area, the statewide Joint Fuel Management Program map can be viewed at <http://www.ffm.vic.gov.au/jfmp>.

This document contains details about the following planned activities:

Planned Burns - fuel reduction, ecological and other planned burns by indicative year for the three-year period.

Non-Burning Fuel Treatments - the program of works that uses methods other than burning to achieve fuel management objectives.

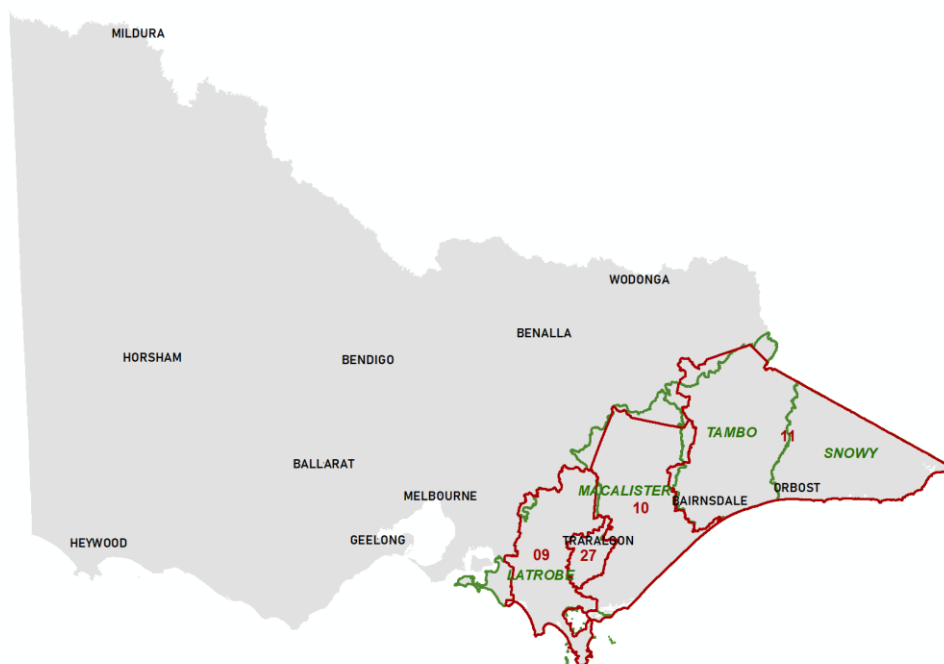
Strategic Fuel Breaks - a strip of land where vegetation has been permanently modified to reduce the rate of spread and intensity of fire for the direct protection of assets and/or assist fire control. They can also assist in the safe delivery of planned burns.

Fire season preparation works – works done prior to the fire season, to ensure infrastructure used in fire detection and suppression are ready for use.

Cultural burning – planned burns led by Traditional Owners on their Country using fire for a number of purposes.

It is important to note that the ability to carry out planned activities is dependent on seasonal and local weather conditions. To allow for this, planned burns from the second and third years of the program may be brought forward to the current year to replace a burn planned for the first year.

Map 1: DELWP and CFA Districts included on this Joint Fuel Management Program



The JFMP is prepared and will be implemented in accordance with Safer Together: A new approach to reducing the risk of bushfire in Victoria, the Code of Practice for Bushfire Management on Public Land 2012 the Regional Bushfire Management Strategy and relevant CFA and FFMVic Instructions, Manuals and Guidelines.

Burns on public land associated with logging regeneration as well as small heap burns are not included in the JFMP as they are approved as part of separate planning processes.

Our Objectives

This JFMP has been developed to implement strategies set out in the Gippsland Bushfire Management Strategy 2020 (BMS), which has been developed by FFMVic and CFA in consultation with agencies, stakeholders and the community.

The BMS has replaced the Alpine and Greater Gippsland Strategic Bushfire Management Plan and part of the East Central SBMP, within Latrobe District. Latrobe District was part of the East Central Bushfire Risk Landscape (old strategic planning footprint) but is now a part of the Gippsland Region (new strategic planning footprint).

The BMS establishes a cross-tenure fuel management strategy to address the bushfire risk across public and private land. It:

- sets clear objectives and associated performance measures for fire management at a regional scale;
- identifies where important values and assets are located across the landscape; and
- includes regional trends in population, industry, and environmental change.

The BMS defines fire management zones on public land that focus appropriate fire management activities to reduce bushfire risk for identified values and promote ecological resilience over the life of the strategy (30-40 years).

Importantly, it identifies Bushfire Risk Engagement Areas (BREA) across public and private land. These areas are intended to support agencies to engage with private landholders about fuel management where it will provide effective bushfire risk reduction.

Gippsland's BMS includes a strategic approach to fuel management (Fire Management Zoning) which focusses on reducing bushfire fuels through planned burning and mechanical works on public land. The planning associated with this strategic approach is what informs the development of the JFMP.

Residual Risk

The Gippsland Bushfire Management Strategy contributes to achieving the Victorian Government Statewide risk reduction objective, which commits to maintaining bushfire risk at or below a residual risk of 70% in the long-term.

Residual risk is the risk, on average, that bushfires will impact on life and property across the landscape. It is expressed as the percentage of the risk that remains after bushfire history and fuel management (mainly planned burning) activities are considered. It is reported on an annual basis.

Each District works towards managing the local bushfire risk through identifying planned burns and other fuel management works, which collectively will meet the Statewide risk reduction target.

This JFMP aims to meet or exceed the regional residual risk targets and to enable the delivery of bushfire management strategies other than residual risk. It provides flexibility to account for different seasonal conditions.

Gippsland's Residual Risk is currently 42%, well below the regional target of 71%, after bushfires affected large areas of the region in recent years. As a result, increasing fuel in these areas will put upward pressure on Residual Risk over the 2022-24 JFMP cycle.

If no planned burning were undertaken during this period, Residual Risk would increase by 9%, to 51% by 2024. If the JFMP is implemented in full, Residual Risk is expected to increase to 44% in 2024. The planned burning program is sufficient to fully mitigate any increase in Residual Risk at a regional level.

Full implementation will maintain Residual Risk at current levels in Latrobe district. Some increase in Residual Risk is projected in Macalister, Tambo and Snowy districts. The location and scale of this planned burning program is sufficient to maintain Residual Risk well below target throughout this JFMP cycle.

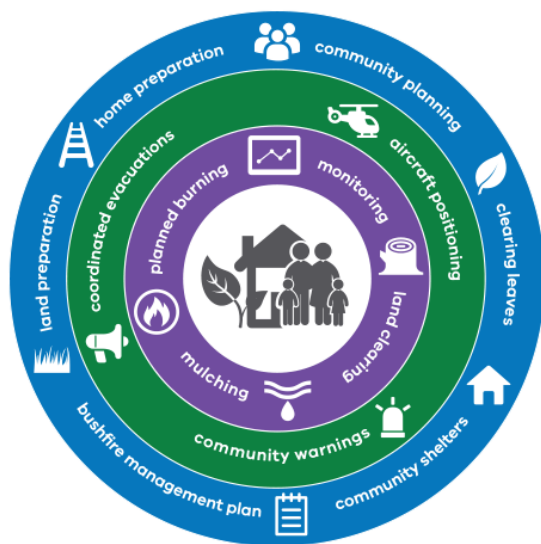
Table 1: Changes to Residual Risk through implementation of the JFMP

Residual risk categories	Latrobe	Macalister	Tambo	Snowy	Region
Residual Risk Target	-	-	-	-	71%
Current Residual Risk % (30 June 2021)	86%	46%	24%	3%	42%
Projected Residual Risk % by 2022 with implementation of JFMP	82%	49%	25%	4%	42%
Projected Residual Risk % by 2024 with implementation of JFMP	79%	47%	30%	13%	44%
Projected Residual Risk % by 2024 without implementation of JFMP	87%	62%	38%	15%	51%

(Source: Forest and Fire Risk Assessment Unit, October 2021)

2020/21 – 2022/23 Joint Fuel Management Program

Planned burning and other fuel management works on this JFMP have been designed to:



- Reduce or maintain residual risk,
- Reduce the size and intensity of bushfire in the landscape to reduce the risk to ecosystems, communities and industries,
- Introduce fire into recently burnt landscapes to prevent continuous fuel build up,
- Use landscape burning techniques along with other strategies to achieve the above, and
- Enhance the use of non-burning fuel treatments to reduce bushfire risk.

Planned burns may be managed differently across different areas to achieve bushfire risk reduction. In areas close to towns or other assets, **asset protection burns** are more frequent and higher coverage to protect people and the things they value. These burns make a significant contribution to our residual risk reduction.

Landscape burning can be used to reduce the spread of bushfires, aiming to reduce the size and intensity of major bushfires in the landscape. Generally, these landscape burns are of larger scale and low coverage. They may be carried out over multiple years and can be unbounded, relying on fuel and moisture differentials for containment.

While **Strategic fuel breaks** are approved via a different process, they are included in the JFMP to demonstrate our integrated approach to managing bushfire risk.

Planned burns

The following is a summary of the area and number of planned burns in all Districts over the next three years to achieve BMS objectives. As previously mentioned, these planned burns may have fuel reduction, landscape or ecological objectives. Details for individual burns are included in Appendices 1 and 2. Any planned burns which have been added to the JFMP for the first time are indicated as being 'New' in the detailed description.

Table 2: Summary of Planned burning for 2021/22 – 2023/2024

Agency / District	2021/2022		2022/2023		2023/2024		TOTAL	
	Area (ha)	No. of Burns	Area (ha)	No. of Burns	Area (ha)	No. of Burns	Area (ha)	No. of Burns
CFA	266	45	302	30	927	40	1,495	115
District 11								
FUEL REDUCTION	128	19	197	16	372	20	697	55
District 10								
FUEL REDUCTION	77	14	80	7	546	15	703	36
District 27								
FUEL REDUCTION	54	7	23	5	4	1	81	13
District 09								
FUEL REDUCTION	7	5	2	2	5	4	14	11
DELWP	70,071	85	48,924	88	183,913	76	303,489	249
Latrobe	12,016	29	11,669	24	11,511	25	35,196	78
ECOLOGICAL	3,467	8	1,980	7	740	3		
FUEL REDUCTION	8,001	20	9,689	17	10,771	22		
LANDSCAPE	548	1	-	-	-	-		
Macalister	35,319	18	13,785	28	17,612	18	66,716	64
ECOLOGICAL	41	2	284	5	22	1		
FUEL REDUCTION	17,647	13	13,472	22	17,415	16		
LANDSCAPE	17,568	1	-	-	-	-		
TRADITIONAL OWNER	63	2	29	1	175	1		
Tambo	18,099	28	21,454	27	72,849	22	112,402	77
ECOLOGICAL	7	2	29	3	15	1		
FUEL REDUCTION	18,092	26	16,832	22	18,880	16		
LANDSCAPE	-	-	4,445	1	52,365	3		
TRADITIONAL OWNER	-	-	148	1	1,589	2		
Snowy	4,637	10	2,016	9	81,926	11	88,579	30
ECOLOGICAL	-	-	-	-	-	-		
FUEL REDUCTION	4,426	9	1,995	8	2,173	8		
LANDSCAPE	-	-	-	-	79,753	3		
TRADITIONAL OWNER	211	1	21	1	-	-		

Non-burning fuel treatments

Non-burning fuel treatment can include mulching, slashing or other operations which do not involve planned burning to reduce fuel loads. The work is an important contributor to reducing bushfire risk to communities as non-burning treatments may be more appropriate or practical in certain areas. For example, fuel on small areas located within or close to townships may be slashed or mulched, where burning is impractical. These methods may also be more suitable in certain vegetation types.

Some of these fuel treatments are annual, with others prioritised based on the seasonal conditions and scheduling of specific planned burns. The actual treatment area will be dependent on the condition of the fuels at the time of assessment.

Table 3: Summary of Non-burning fuel treatments for 2021/22 – 2023/2024

Agency / District	2021/22 Area (ha)
DELWP	8,704.5
Latrobe	1,137.1
Fuel break maintenance	1,116.6
Mechanical Fuel Reduction Treatment	15.3
Fuel Break Construction	5.2
Macalister	1,599.4
Fuel break maintenance	1,599.4
Mechanical Fuel Reduction Treatment	-
Fuel Break Construction	-
Tambo	3,428
Fuel break maintenance	3,374
Mechanical Fuel Reduction Treatment	54
Fuel Break Construction	-
Snowy	2,540
Fuel break maintenance	2,470
Mechanical Fuel Reduction Treatment	70
Fuel Break Construction	-

Strategic Fuel Breaks

Strengthening and expanding Victoria's network of Strategic Fuel Breaks is one of the key actions that form DELWP's Advanced Forest and Fire Management strategy, designed to reduce the risk and impacts of more frequent, intense and damaging bushfires under a changing climate.

Fuel breaks are critical to protecting communities, catchments and the environment from devastation by bushfire. They do this by making it easier, faster and safer for firefighters to suppress fires. As a last resort, they can also assist in reducing the intensity of direct fire on houses and other buildings.

The Strategic Fuel Break program is utilising two types of protection breaks in their work:

Landscape protection breaks (LPB): Located in the forest to divide the landscape into units/areas suitable to help to reduce the fire to the smallest size possible. These breaks provide a platform for fighting fires in the forest and may also reduce fire impacts on nearby communities.

Asset protection breaks (APB): Designed to provide direct protections of communities and assets from the direct impacts of fire. These breaks are generally located adjacent to townships and assets.

Strategic fuel breaks are approved by a separate process and are displayed on the JFMP for information only.

The following strategic fuel breaks are proposed for construction (new) or renewal (upgrading of an existing break to meet current standards) during 2021/22 (Table 4). These are high priority Strategic Fuel Breaks that are planned to be constructed this year.

Table 4: Proposed Strategic Fuel Breaks for 2021/22

SFB Name	SFB Number	Work Type	SFB Type	Distance (km)	Width (m)
Birregun Road	GP-TBO-SCK-0180	Renewal	LPB	41	20
Binns Road	GP-LTB-ERI-0183	Renewal	LPB	12	20
Bulldog Road	GP-TBO-BAI-0194	Renewal	LPB	23.5	20
Bulldog Road	GP-TBO-BAI-0194	New	LPB	6.1	20
Cowwarr Road	GP-LTB-ERI-0178	New	LPB	23.1	30-40
Camp Creek Road	GP-LTB-NJE-0119	New	LPB	6.4	20
Finns Road	GP-LTB-ERI-0182	New	LPB	11	20
Gidleys Road	GP-TBO-BAI-0200	Renewal	LPB	27	20
Gunns Road	GP-LTB-NJE-0118	New	LPB	3.2	40
Howitt Spur Road	GP-TBO-BAI-0195	Renewal	LPB	1.3	20
Jackies Dream Road	GP-TBO-BAI-0193	New	LPB	2.2	20
Jones Road	GP-TBO-BAI-0207	New	LPB	26	20
Jones Road (Snowy)	GP-SNO-CAN-0177	New	LPB	17.5	20
Moondarra Reservoir Road	GP-LTB-ERI-0180	New	LPB	6.2	30-40
Newmerella Break	GP-SNO-ORB-0236	New	APB	12.35	40
Old Depot Coopers Road	GP-LTB-ERI-0177	New	APB	2.9	40
Progress Road	GP-MAC-YAR-0423	New	APB	1.3	40
S6/B6 Track	GP-LTB-ERI-0181	New	LPB	10.8	30-40
Sisters Road	GP-TBO-BAI-0196	Renewal/New	LPB	9.1	20
Springs Road	GP-MAC-HEY-0478	New	LPB	19.9	20
Stoney Peak Road	GP-SNO-CAN-0180	Renewal	LPB	17	20
Syndanham Inlet Road	GP-SNO-CAN-0179	New	LPB	18.3	20
W18 Track	GP-LTB-ERI-0179	New	LPB	5.2	30-40
Wairewa Community Break	GP-TBO-NOW-0412	New	APB	18.6	40
Wanganabell Road	GP-SNO-CAN-0178	New	LPB	2.5	20
Wattle Creek Road	GP-TBO-BAI-0192	New	LPB	11.6	20

Currently, the Strategic Fuel Break program is only funded for 2021/22. However, initial planning has commenced to identify the overall Strategic Fuel Break network should further funding be available in future years. Additional high priority strategic fuel breaks have been identified as potential candidate breaks for construction in future years if funding allows, or as contingency fuel breaks should a proposed 2021/22 Strategic Fuel Break not be able to be constructed (Table 5).

Table 5: Potential candidate Strategic Fuel Breaks

SFB Name	SFB Number	Works Type	SFB Type	Distance (km)	Width (m)
Ash Range Road	GP-TBO-BAI-0198	Renewal	LPB	13.7	20
Betka Road	GP-SNO-CAN-0176	Renewal	LPB	14	20
Boundary Road	GP-SNO-ORB-0232	New	LPB	8.1	20
Cann River Township Break	GP-SNO-CAN-0182	New	APB	51	30-40
Casper Creek Track	GP-LTB-ERI-0187	Renewal	LPB	3.1	20
Coulsons Road	GP-SNO-ORB-0233	Renewal/New	LPB	12.5	20
Cutts Creek Road	GP-TBO-NOW-0409	Renewal/New	LPB	17	20
Depford Road	GP-TBO-BAI-0197	Renewal	LPB	9.7	20
Lochsport Township Break Sth	GP-MAC-YAR-0424	New	APB	0.4	40
Mallacoota Western Front	GP-SNO-CAN-0181	New	APB	5.75	40
Mt Johnson Road	GP-TBO-NOW-0410	New	LPB	4.4	20
Mt Victoria Road	GP-TBO-NOW-0411	New	LPB	7.3	20
Nine Mile Road	GP-LTB-NJE-0121	Renewal	LPB	16.3	20
Old Coast Road	GP-SNO-ORB-0238	New	LPB	17.9	20
Old Government Road	GP-LTB-ERI-0186	New	LPB	3.8	20
Orbost Township Break	GP-SNO-ORB-0231	New	APB	16.4	40
Playgrounds Road	GP-TBO-BAI-0199	Renewal	LPB	9.4	20
Poddy Creek Road	GP-SNO-ORB-0234	New	LPB	18.8	20
South Boundary Road	GP-SNO-ORB-0232	New	APB	8.4	30-40
Tanjil Bren Road	GP-LTB-NJE-0120	Renewal/New	LPB	35.6	20
Thalia Road	GP-MAC-YAR-0426	New	APB	3	30-40
Thomson Jordan Divide Road	GP-LTB-ERI-0184	Renewal	LPB	22.2	20
Trig Track	GP-MAC-YAR-0427	New	LPB	1.2	20
Violet Town Track	GP-LTB-ERI-0188	Renewal	LPB	4.7	20
Williamson Spur Track	GP-LTB-ERI-0189	Renewal	LPB	18.2	20

Cultural Burning

Cultural fire is fire deliberately put into the landscape authorised and lead by the Traditional Owners of that Country for a variety of purposes, including ceremony, protection of cultural and natural assets, fuel reduction, regeneration and management of food, fibre and medicines, flora regeneration, fauna habitat protection and healing Country's spirit.

We are guided by the Victorian Traditional Owner Cultural Fire Strategy which provides policy direction and a framework for fire and land management agencies to better enable Traditional Owners to undertake cultural burning for these cultural objectives.

There are six principles underpinning this strategy:

- cultural burning is right fire, right time, right way and for the right (cultural reasons), according to lore;
- burning is a cultural responsibility;
- cultural fire is living knowledge;
- monitoring, evaluation and research support cultural fire objectives and enable adaptive learning;
- Country is managed holistically; and
- cultural fire is healing.

The Strategy was authored by Victorian Traditional Owners with the support of a partnership between the Federation of Victorian Traditional Owner Corporations, DELWP, Parks Victoria and the CFA.

FFMVic and CFA recognises that cultural burning can assist landholders and communities in the use of fire to care for Country. The sharing of knowledge by our local Traditional Owners as well as from indigenous peoples from other parts of Australia will assist in improving our adaptive fire management practices in Victoria. This builds on supporting community through learning about how we live with fire.

Working together to foster knowledge sharing is an important way to enable participation of Aboriginal communities.

Gippsland is actively working together with Traditional Owner groups across the Region, guided by the direction they want to take and specific to the needs and wishes of the group. We continue to build on the strong working relationships that are recognized whilst being open to establishing new ones. Gunaikurnai Land and Waters Aboriginal Corporation and Snowy Cann Rivers First People's Country and Waters Aboriginal Corporation have nominated some burns that will be led by Traditional Owners with support from Forest Fire Management Victoria and CFA.

Endorsement

The 2021/22 – 2023/2024 Joint Fuel Management Program has been endorsed by:

Deputy Chief Fire Officer, Gippsland DELWP Region:	Geoff Conway
Deputy Chief Officer, South East CFA Region:	Trevor Owen

Approval

The 2021/22 – 2023/2024 Joint Fuel Management Program has been approved by:

DELWP Chief Fire Officer:	Chris Hardman
CFA Chief Officer:	Jason Heffernan

Noting for on-ground ignition and delivery of cross tenure and private property burns, FFMVic and CFA agency responsibilities remain unchanged.

How to become involved in the development of the Joint Fuel Management Program

FFMVic and CFA welcome comment on fire management all year round, on all parts of the planning process – both strategic and operational. Please be aware that due to the planning cycle your comments relating to certain aspects of the program may not be included until the following year's Joint Fuel Management Program.

Comments and suggestions relating to the JFMP can be sent to:

Regional Fuel Management Coordinator,
Gippsland, DELWP
1 Licola Road
Heyfield 3858

Vegetation Management Officer,
South East Region, CFA
20 Hazelwood Road
Morwell 3840

Vegetation Management Officer,
South East Region, CFA
130 Macleod Street
Bairnsdale 3875

You can find out more about our fuel management programs - FFMVic and CFA.

Planned Burns Victoria

Planned Burns Victoria (PBV) is a new, easy-to-use, opt-in system that you can customise to suit your notification needs. PBV currently provides an overview of all planned burns on this JFMP. The system also notifies people when a planned burn in Victoria is close to being ignited.

You can type in a postcode or location and access to information about planned burns on public and/or private land that are close to being ignited. You can access the system at:

<https://plannedburns.ffm.vic.gov.au>

Appendix (1): FFMVic Schedules of Activities

These schedules contain the details of FFMVic-led planned burning activities. Please note that the planned burn year and season identified for each planned burn is indicative only and may be changed due to weather conditions and operational requirements.

The following abbreviations maybe used in the following Schedules: ‘*’ asterisk on burn name denotes a cross tenure burn; PV – Parks Victoria; COM – Committee of Management; DELWP- Department of Environment Land Water and Planning; PP – Private Property; FRB – Fuel Reduction Burn; ECO – Ecological burn; REG – Regeneration Burn; TO – Traditional Owner; FMZ – Fire Management Zone; APZ – Asset Protection Zone; BMZ – Bushfire Moderation Zone; LMZ – Landscape Management Zone; PBEZ – Planned Burn Exclusion Zone; NZ – Not Zoned; FPA – Fire Protected Area.

SCHEDULE 1: FFMVic LEAD LATROBE DISTRICT – PLANNED BURNING

FFMVic Lead Latrobe District Planned Burns 2021/22

Local Government Area	Burn Number	Burn Name	General Location	Burn Type	Land Management Objective	FMZ	Planned Burn Size (ha)	New Burn
LATROBE CITY	GP-LTB-SGD-0005	BOOLARRA SOUTH - NATHANS TRK	5.5km SW of Boolarra	FRB	To provide bushfire protection by reducing overall fuel hazard and bushfire hazard in the landscape.	LMZ	50.4	
LATROBE CITY	GP-LTB-ERI-0019	*COWWARR - TOONGABBIE	4.5KM WNW OF COWWARR	FRB	To develop a fuel reduced area to the West of Cowwarr township.	BMZ	1306.8	
BAW BAW SHIRE	GP-LTB-ERI-0077	ERICA - MIDDLE CREEK	3.5km WNW of Erica	FRB	To provide the highest level of localised protection to human life, property and community assets identified as highly valued including Erica township.	APZ	212.3	
BAW BAW SHIRE	GP-LTB-ERI-0121	Erica - Substation	2.8km S of Erica	FRB	To provide the highest level of localised protection to human life, property and community assets identified as highly valued including Collins Siding residences.	APZ	13.2	Yes
BAW BAW SHIRE	GP-LTB-ERI-0016	*Erica - W18	1km E of Moondarra Reservoir	FRB	To develop a fuel reduced area to the North West of Tyers Township.	BMZ	1288.2	
BAW BAW SHIRE	GP-LTB-NJE-0060	Fumina - Ferguson Road	2km W of Fumina	FRB	To develop fuel reduced areas of sufficient width and continuity to reduce the speed and intensity of bushfires.	BMZ	541.7	
BAW BAW SHIRE	GP-LTB-NJE-0022	FUMINA SOUTH - WILD BULL	2km SW of Fumina South	FRB	To develop a fuel reduced area to the West of Fumina South.	BMZ	411.6	

BAW BAW SHIRE	GP-LTB-NJE-0012	Hill End - Hard Up	5.5km WSW of Hill End	FRB	To provide bushfire protection by reducing overall fuel hazard and bushfire hazard in the landscape.	LMZ	675.3	
BASS COAST SHIRE	GP-LTB-SGD-0145	Kilcunda - Block B	1km W of Kilcunda	ECO	To modify the vegetation Composition across the planned area to assist the Promotion of Coastal.	LMZ	10.4	Yes
SOUTH GIPPSLAND SHIRE	GP-LTB-SGD-0010	MIRBOO NORTH - HOODS HILL	1.5km E of Mirboo North	FRB	To develop fuel reduced areas of sufficient width and continuity to reduce the speed and intensity of bushfires.	BMZ	26.1	
BAW BAW SHIRE	GP-LTB-ERI-0023	Moondarra - Wild Cow	7km NE of Tanjil South	FRB	To develop a fuel reduced area to the North of Thalloo residences.	BMZ	1014.1	
BAW BAW SHIRE	GP-LTB-NJE-0018	*NAYOOK - WHITES CORNER	2km W of Nayook	FRB	To provide the highest level of localised protection to human life, property and community assets identified as highly valued including Nayook and Piedmont.	APZ	351.8	
BAW BAW SHIRE	GP-LTB-NJE-0011	*Noojee - Ridge Road	2.5km N of Noojee	FRB	To develop a fuel reduced area to the North of Noojee.	BMZ	345.2	
BAW BAW SHIRE	GP-LTB-ERI-0015	*Parkers Corner - Finns Track	2km NW of Rawson	FRB	To provide the highest level of localised protection to human life, property and community assets identified as highly valued including Rawson and Erica townships.	APZ	74.2	
BAW BAW SHIRE	GP-LTB-ERI-0003	Rawson - Amor Jack	1km N of Rawson	FRB	To provide the highest level of localised protection to human life, property and community assets identified as highly valued including Rawson township.	APZ	80.8	
BAW BAW SHIRE	GP-LTB-ERI-0119	Rawson - East Block	0.7km E of Rawson	FRB	To provide the highest level of localised protection to human life, property and community assets identified as highly valued including Rawson township.	APZ	21.6	Yes
BAW BAW SHIRE	GP-LTB-NJE-0014	*SWEETWATER - BEARDS	10km ESE of Neerim South	FRB	To develop a fuel reduced area to the West of Willow Grove.	BMZ	158.4	
BAW BAW SHIRE	GP-LTB-ERI-0021	Tanjil - Stuart Mine	8km E of Hill End	FRB	To provide bushfire protection by reducing overall fuel hazard and bushfire hazard in the landscape.	LMZ	1872.5	
SOUTH GIPPSLAND SHIRE	GP-LTB-SGD-0006	Walkerville - Walkerville South Road	2.5km SW of Walkerville	FRB	To provide bushfire protection by reducing overall fuel hazard and bushfire hazard in the landscape.	LMZ	12.7	
SOUTH GIPPSLAND SHIRE	GP-LTB-SGD-0011	Waratah Bay - Heath Loop Tk	0.5km NNW of Waratah Bay	FRB	To develop fuel reduced areas of sufficient width and continuity to reduce the speed and intensity of bushfires.	BMZ	12.2	

SOUTH GIPPSLAND SHIRE	GP-LTB-SGD-0080	Wilsons Promontory - Park Entrance	6km SE of Yanakie	ECO	To modify the vegetation Composition across the planned area to assist the Promotion of Coastal.	APZ	8.4	
SOUTH GIPPSLAND SHIRE	GP-LTB-SGD-0143	Wilsons Promontory - Tongue Point	3.5km NW of Tidal River	ECO	To modify the vegetation Composition across the planned area to assist the Promotion of Heathland (sands).	LMZ	696.6	Yes
SOUTH GIPPSLAND SHIRE	GP-LTB-SGD-0086	Wilsons Promontory - Varneys Grasslands	10km S of Yanakie	ECO	To modify the vegetation Composition across the planned area to assist the Promotion of Coastal.	LMZ	548.4	
BASS COAST SHIRE	GP-LTB-SGD-0077	WONTHAGGI - HEATHLANDS BLOCK B	3km S of Wonthaggi	ECO	To modify the vegetation Structure across the planned area to assist the Promotion of Heathland (sands).	LMZ	17.5	
BASS COAST SHIRE	GP-LTB-SGD-0144	Wonthaggi - Heathlands Block K	4km SW of Wonthaggi	ECO	To modify the vegetation Composition across the planned area to assist the Promotion of Heathland (sands).	LMZ	6.8	Yes
SOUTH GIPPSLAND SHIRE	GP-LTB-SGD-0078	WPNP - Cow Creek West	14.5km SE of Yanakie	ECO	To modify the vegetation Composition across the planned area to assist the Promotion of Heathland (sands).	LMZ	521	
SOUTH GIPPSLAND SHIRE	GP-LTB-SGD-0002	WPNP - SouWest Corner Track	12km SSE of Yanakie	ECO	To modify the vegetation Structure across the planned area to assist the Promotion of Coastal.	LMZ	1658.1	
SOUTH GIPPSLAND SHIRE	GP-LTB-SGD-0009	WPNP - Squeaky South	1km NW of Tidal River	FRB	To develop a fuel reduced area to the North West of Tidal River.	BMZ	226.3	
BAW BAW SHIRE	GP-LTB-ERI-0025	*YALLOURN NORTH - LESLIE TRACK	5km N of Yallourn North	FRB	To develop a fuel reduced area to the North of Yallourn North township.	BMZ	256.2	

FFMVic Lead Latrobe District Planned Burns 2022/23

Local Government Area	Burn Number	Burn Name	General Location	Burn Type	Land Management Objective	FMZ	Planned Burn Size (ha)	New Burn
BAW BAW SHIRE	GP-LTB-ERI-0013	BAW BAW - BEARDMORES	1km E of Thomson Dam	FRB	To develop fuel reduced areas of sufficient width and continuity to reduce the speed and intensity of bushfires.	BMZ	353.8	
BAW BAW SHIRE	GP-LTB-ERI-0067	Boola - W11 Track	12km SE of Erica	FRB	To provide bushfire protection by reducing overall fuel hazard and bushfire hazard in the landscape.	LMZ	1158.8	
LATROBE CITY	GP-LTB-SGD-0003	Boolarra - Rabbi Track	2.2km S of Boolarra	FRB	To provide bushfire protection by reducing overall fuel hazard and bushfire hazard in the landscape.	LMZ	13.3	
LATROBE CITY	GP-LTB-ERI-0012	Callignee - Robs Tk	3km N of Callignee	FRB	To develop a fuel reduced area to the North of residences along Sunday Rd and the West along Old Callignee Rd.	BMZ	107.3	
BAW BAW SHIRE	GP-LTB-NJE-0004	Crossover - Gunn Rd	3km SE of Neerim South	FRB	To develop fuel reduced areas of sufficient width and continuity to reduce the speed and intensity of bushfires.	BMZ	184.7	
BAW BAW SHIRE	GP-LTB-ERI-0011	Erica - Hotel Creek	1km W of Erica	FRB	To provide the highest level of localised protection to human life, property and community assets identified as highly valued including Erica township.	APZ	264.5	
LATROBE CITY	GP-LTB-ERI-0018	*GLENGARRY - E7	5.5km NNW of Glengarry	FRB	To develop fuel reduced areas of sufficient width and continuity to reduce the speed and intensity of bushfires.	BMZ	316.6	
BAW BAW SHIRE	GP-LTB-ERI-0065	HILL END - MERVS	5km E of Hill End	FRB	To provide bushfire protection by reducing overall fuel hazard and bushfire hazard in the landscape.	LMZ	633	
BAW BAW SHIRE	GP-LTB-NJE-0005	Jericho - Poole Road	6km SE of Matlock	FRB	To develop fuel reduced areas of sufficient width and continuity to reduce the speed and intensity of bushfires.	BMZ	1762.2	
BASS COAST SHIRE	GP-LTB-SGD-0146	Kilcunda - Block A	1.2km W of Kilcunda	ECO	To modify the vegetation Composition across the planned area to assist the Promotion of Coastal.	LMZ	4.6	Yes
BAW BAW SHIRE	GP-LTB-NJE-0062	Labertouche - Robertson Creek	3.5km N of Labertouche	FRB	To develop fuel reduced areas of sufficient width and continuity to reduce the speed and intensity of bushfires.	BMZ	1191	
BAW BAW SHIRE	GP-LTB-NJE-0007	*Loch Valley - Lv1 Track	4km N of Noojee	FRB	To develop a fuel reduced area to the North of Noojee.	BMZ	484.5	
BAW BAW SHIRE	GP-LTB-ERI-0006	*Moondarra - Almond Track	9KM SSW OF ERICA	FRB	To develop a fuel reduced area to the West of Moondarra Water Catchment.	BMZ	240.7	

BAW BAW SHIRE	GP-LTB-ERI-0010	Moondarra - Tea Tree Creek	5km SW of Erica	FRB	To develop fuel reduced areas of sufficient width and continuity to reduce the speed and intensity of bushfires.	BMZ	1008.9	
BAW BAW SHIRE	GP-LTB-NJE-0061	Neerim East - H Tree	8km E of Neerim	FRB	To develop fuel reduced areas of sufficient width and continuity to reduce the speed and intensity of bushfires.	BMZ	660.3	
BAW BAW SHIRE	GP-LTB-ERI-0078	*Parkers Corner - West Block	2km NW of Rawson	FRB	To provide the highest level of localised protection to human life, property and community assets identified as highly valued including Rawson and Erica township.	APZ	154.4	
WELLINGTON SHIRE	GP-LTB-SGD-0147	Snake Island - West Block	5.7km S of Port Welshpool	ECO	To modify the vegetation Composition across the planned area to assist the Promotion of Heathland (sands).	LMZ	50.1	Yes
BAW BAW SHIRE	GP-LTB-NJE-0008	Thomson - Upper Thomson Rd	13km W of Aberfeldy	FRB	To develop fuel reduced areas of sufficient width and continuity to reduce the speed and intensity of bushfires.	BMZ	841.8	
SOUTH GIPPSLAND SHIRE	GP-LTB-SGD-0072	Walkerville - MacPherson Creek	2.5km SW of Walkerville	ECO	To modify the vegetation Structure across the planned area to assist the Promotion of Heathland (sands).	LMZ	122.9	
BAW BAW SHIRE	GP-LTB-ERI-0122	Willow Grove - Burns Road	5km NE of Willow Grove	FRB	To develop fuel reduced areas of sufficient width and continuity to reduce the speed and intensity of bushfires.	BMZ	313	Yes
SOUTH GIPPSLAND SHIRE	GP-LTB-SGD-0152	Wilsons Promontory - Leonard Point	2km NW of Tidal River	ECO	To modify the vegetation Composition across the planned area to assist the Promotion of Heathland (sands).	LMZ	177.1	Yes
BASS COAST SHIRE	GP-LTB-SGD-0076	WONTHAGGI - HEATHLANDS BLOCK A	3km S of Wonthaggi	ECO	To modify the vegetation Structure across the planned area to assist the Promotion of Eastern Spider Orchid, enhance the habitat for the Southern Brown Bandicoot and the White - Footed Dunnart.	LMZ	25.8	
SOUTH GIPPSLAND SHIRE	GP-LTB-SGD-0013	WPNP - Little Drift Track	10km SE of Yanakie	ECO	To modify the vegetation Structure across the planned area to assist the Promotion of Coastal.	LMZ	409.7	
SOUTH GIPPSLAND SHIRE	GP-LTB-SGD-0079	WPNP - Vereker Track	15.5km SE of Yanakie	ECO	To modify the vegetation Composition across the planned area to assist the Promotion of Coastal.	LMZ	1189.4	

FFMVic Lead Latrobe District Planned Burns 2023/24

Local Government Area	Burn Number	Burn Name	General Location	Burn Type	Land Management Objective	FMZ	Planned Burn Size (ha)	New Burn
BASS COAST SHIRE	GP-LTB-SGD-0001	*Adams Estate - Stanley Rd	0.1km S of Adams Estate	FRB	To provide the highest level of localised protection to human life, property and community assets identified as highly valued including Adams Estate.	APZ	22.2	
WELLINGTON SHIRE	GP-LTB-ERI-0126	Binns - Binns Road	14km NE of Walhalla	FRB	To provide bushfire protection by reducing overall fuel hazard and bushfire hazard in the landscape.	LMZ	1319.2	Yes
BAW BAW SHIRE	GP-LTB-ERI-0075	Boola - C22 Track	11km W of Cowwarr	FRB	To provide bushfire protection by reducing overall fuel hazard and bushfire hazard in the landscape.	LMZ	2013.2	
BAW BAW SHIRE	GP-LTB-ERI-0076	Boola - Scarf Track	7km SE of Rawson	FRB	To provide bushfire protection by reducing overall fuel hazard and bushfire hazard in the landscape.	LMZ	493.4	
BAW BAW SHIRE	GP-LTB-ERI-0124	Collins Siding - Telecom Track	1.5km SW of Erica	FRB	To provide the highest level of localised protection to human life, property and community assets identified as highly valued including Collins Siding residences.	APZ	27.7	Yes
BAW BAW SHIRE	GP-LTB-ERI-0069	Erica - W30 Track	7km SE of Erica	FRB	To develop fuel reduced areas of sufficient width and continuity to reduce the speed and intensity of bushfires.	BMZ	1529.6	
LATROBE CITY	GP-LTB-ERI-0123	Glengarry - Rifle Range Road	3.5km NW of Glengarry	FRB	To provide the highest level of localised protection to human life, property and community assets identified as highly valued including Tandara Drive residences.	APZ	48.9	Yes
LATROBE CITY	GP-LTB-ERI-0071	Hazelwood South - Jills Track	1.5km SE of Hazelwood South	FRB	To develop fuel reduced areas of sufficient width and continuity to reduce the speed and intensity of bushfires.	BMZ	32.9	
BAW BAW SHIRE	GP-LTB-ERI-0009	Jacob Creek - Mcconachys Road	3.6km SE of Erica	FRB	To provide bushfire protection by reducing overall fuel hazard and bushfire hazard in the landscape.	LMZ	13.2	
BASS COAST SHIRE	GP-LTB-SGD-0151	Kilcunda - Block C	0.8km W of Kilcunda	ECO	To modify the vegetation Composition across the planned area to assist the Promotion of Coastal.	LMZ	7.1	Yes
BAW BAW SHIRE	GP-LTB-ERI-0008	Moondarra - Dwyers Track	7km W of Moondarra	FRB	To develop fuel reduced areas of sufficient width and continuity to reduce the speed and intensity of bushfires.	BMZ	1143.7	

BAW BAW SHIRE	GP-LTB-ERI-0068	Moondarra - S6 Track	3km NW of Thaloo	FRB	To develop fuel reduced areas of sufficient width and continuity to reduce the speed and intensity of bushfires.	BMZ	733.3	
BAW BAW SHIRE	GP-LTB-ERI-0072	*Moondarra - Seninis Track	3km W of Moondarra	FRB	To develop fuel reduced areas of sufficient width and continuity to reduce the speed and intensity of bushfires.	BMZ	461.3	
LATROBE CITY	GP-LTB-ERI-0127	Morwell NP - Fay Street	2.8km SW of Jeeralang Junction	FRB	To provide the highest level of localised protection to human life, property and community assets identified as highly valued including nearby residences.	APZ	3.3	Yes
BAW BAW SHIRE	GP-LTB-NJE-0092	Neerim East - H Tree Extension	9km NW of Willow Grove	FRB	To develop fuel reduced areas of sufficient width and continuity to reduce the speed and intensity of bushfires.	BMZ	404.5	Yes
BAW BAW SHIRE	GP-LTB-NJE-0093	*Noojee - Gunns Road	4.5km N of Noojee	FRB	To develop fuel reduced areas of sufficient width and continuity to reduce the speed and intensity of bushfires.	BMZ	435.2	Yes
BAW BAW SHIRE	GP-LTB-ERI-0120	Thaloo - Crabhole Track	7km NW of Yallourn North	FRB	To develop fuel reduced areas of sufficient width and continuity to reduce the speed and intensity of bushfires.	BMZ	367.5	Yes
LATROBE CITY	GP-LTB-ERI-0125	Tyers - Blairs Road	4.5km NW of Tyers	FRB	To develop fuel reduced areas of sufficient width and continuity to reduce the speed and intensity of bushfires.	BMZ	101	Yes
BAW BAW SHIRE	GP-LTB-ERI-0073	Tyers - Smyths Track	5km NW of Tyers	FRB	To develop fuel reduced areas of sufficient width and continuity to reduce the speed and intensity of bushfires.	BMZ	279	
BAW BAW SHIRE	GP-LTB-ERI-0074	Walhalla - Fear Not Creek	2.5km N of Walhalla	FRB	To provide bushfire protection by reducing overall fuel hazard and bushfire hazard in the landscape.	LMZ	555.5	
SOUTH GIPPSLAND SHIRE	GP-LTB-SGD-0148	*Waratah Bay - Caravan Park	0.1km NW of Waratah Bay	FRB	To provide bushfire protection by reducing overall fuel hazard and bushfire hazard in the landscape.	LMZ	3.3	Yes
BAW BAW SHIRE	GP-LTB-NJE-0094	Willow Grove - Casuarina Track	5.5km NE of Willow Grove	FRB	To develop fuel reduced areas of sufficient width and continuity to reduce the speed and intensity of bushfires.	BMZ	171.9	Yes
BAW BAW SHIRE	GP-LTB-NJE-0063	Willow Grove - Stoll Road	7km NW of Willow Grove	FRB	To provide bushfire protection by reducing overall fuel hazard and bushfire hazard in the landscape.	LMZ	611.6	
SOUTH GIPPSLAND SHIRE	GP-LTB-SGD-0149	Wilsons Promontory - Enclave Creek	11km SE of Tidal River	ECO	To modify the vegetation Composition across the planned area to assist the Promotion of Heathland (sands).	LMZ	710.6	Yes
BASS COAST SHIRE	GP-LTB-SGD-0150	Wonthaggi - Heathlands Block D	4.2km SW of Wonthaggi	ECO	To modify the vegetation Composition across the planned area to assist the Promotion of Heathland (sands).	LMZ	22.5	Yes

SCHEDULE 2: FFMVic LEAD MACALISTER DISTRICT – PLANNED BURNING

FFMVic Lead Macalister District Planned Burns 2021/22

Local Government Area	Burn Number	Burn Name	General Location	Burn Type	Land Management Objective	FMZ	Planned Burn Size (ha)	New Burn
WELLINGTON SHIRE	GP-MAC-BRI-0004	*BRIAGOLONG - COOPERS RD	5km NE of Briagolong	FRB	To provide the highest level of localised protection to human life, property and community assets identified as highly valued including the Briagolong community.	APZ	397.4	
WELLINGTON SHIRE	GP-MAC-BRI-0046	Briagolong - Lees Creek Track	20km NE of Briagolong	FRB	To provide bushfire protection by reducing overall fuel hazard and bushfire hazard in the landscape.	LMZ	4574.9	
WELLINGTON SHIRE	GP-MAC-BRI-0047	Briagolong - Toggle Hill Track South	14KM N of Briagolong	FRB	To develop fuel reduced areas of sufficient width and continuity to reduce the speed and intensity of bushfires.	BMZ	210.7	
WELLINGTON SHIRE	GP-MAC-YAR-0301	Cobains - Dowd Morass	8km NW of Cobains	TO	To meet cultural burning practice of low intensity burns to enhance cultural values as desired by traditional owners.	LMZ	7.2	Yes
EAST GIPPSLAND SHIRE	GP-MAC-DGO-0020	Cobbannah - Treasure Track	2.5km E of Cobbannah	FRB	To develop fuel reduced areas of sufficient width and continuity to reduce the speed and intensity of bushfires.	BMZ	829.9	
WELLINGTON SHIRE	GP-MAC-YAR-0038	Giffard - Darriman Reserve Block 3	0.2km SE of Giffard	ECO	To modify the vegetation Structure across the planned area to assist the Promotion of Inland Plains Woodland.	LMZ	10.7	
WELLINGTON SHIRE	GP-MAC-HEY-0020	*Glencairn - Barkley River	7.9km NW of Licola	FRB	To develop fuel reduced areas of sufficient width and continuity to reduce the speed and intensity of bushfires.	BMZ	4063.4	
WELLINGTON SHIRE	GP-MAC-YAR-0043	Greenmount - Elliots Rd	4km NE of Greenmount	FRB	To develop fuel reduced areas of sufficient width and continuity to reduce the speed and intensity of bushfires.	BMZ	264.4	
EAST GIPPSLAND SHIRE	GP-MAC-LSP-0012	Loch Sport - Pelican Point	1km NE of Loch Sport	FRB	To develop fuel reduced areas of sufficient width and continuity to reduce the speed and intensity of bushfires.	BMZ	202.9	

WELLINGTON SHIRE	GP-MAC-BRI-0028	Munro - Rail Reserve Block 2	200m East of Munro	ECO	To modify the vegetation Structure across the planned area to assist the Promotion of Inland Plains Woodland.	LMZ	30.1	
WELLINGTON SHIRE	GP-MAC-BRI-0066	Stockdale - Forders Track	4.5km E of Briagolong	FRB	To develop fuel reduced areas of sufficient width and continuity to reduce the speed and intensity of bushfires.	BMZ	221.7	
WELLINGTON SHIRE	GP-MAC-BRI-0030	Stratford - Knob Reserve Block 1	2km SE of Stratford	TO	To meet cultural burning practice of low intensity burns to enhance cultural values as desired by traditional owners.	LMZ	55.4	
WELLINGTON SHIRE	GP-MAC-HEY-0025	Tamboritha - Toms Cap	35km N of Licola	FRB	To provide bushfire protection by reducing overall fuel hazard and bushfire hazard in the landscape.	LMZ	17568.4	
WELLINGTON SHIRE	GP-MAC-BRI-0060	*Valencia Creek - OKeefe Road	10km NW of Briagolong	FRB	To provide the highest level of localised protection to human life, property and community assets identified as highly valued including Valencia Creek area.	APZ	289.7	
WELLINGTON SHIRE	GP-MAC-BRI-0042	Valencia Creek - Scrubby Link Track	13km NW of Briagolong	FRB	To develop fuel reduced areas of sufficient width and continuity to reduce the speed and intensity of bushfires.	BMZ	202.4	
WELLINGTON SHIRE	GP-MAC-BRI-0037	Woolenook - Left Hand Branch Link Track	14km N of Briagolong	FRB	To provide bushfire protection by reducing overall fuel hazard and bushfire hazard in the landscape.	LMZ	2720	
WELLINGTON SHIRE	GP-MAC-LSP-0019	Loch Sport - Progress Road	1km W of Loch Sport	FRB	To provide the highest level of localised protection to human life, property and community assets identified as highly valued including Loch Sport community.	APZ	68.9	
WELLINGTON SHIRE	GP-MAC-DGO-0025	Talbotville - McMillans Track	5km SE of Talbotville	FRB	To develop fuel reduced areas of sufficient width and continuity to reduce the speed and intensity of bushfires.	BMZ	3600.2	

FFMVic Lead Macalister District Planned Burns 2022/23

Local Government Area	Burn Number	Burn Name	General Location	Burn Type	Land Management Objective	FMZ	Planned Burn Size (ha)	New Burn
WELLINGTON SHIRE	GP-MAC-YAR-0045	Alberton West - Coal Mine Road	2km SW of Alberton West	FRB	To develop fuel reduced areas of sufficient width and continuity to reduce the speed and intensity of bushfires.	BMZ	233.8	

WELLINGTON SHIRE	GP-MAC-DGO-0017	Black Snake Creek - Gradys Creek	8.5km NW of Dargo	FRB	To develop fuel reduced areas of sufficient width and continuity to reduce the speed and intensity of bushfires.	BMZ	1201.1
WELLINGTON SHIRE	GP-MAC-BRI-0065	Briagolong - Kennedys Flat Road	8.5km NE of Briagolong	FRB	To provide the highest level of localised protection to human life, property and community assets identified as highly valued including Stockdale and Briagolong community.	APZ	202.7
WELLINGTON SHIRE	GP-MAC-BRI-0050	Briagolong - Kurrajong Tree Track	6km NE of Briagolong	FRB	To provide the highest level of localised protection to human life, property and community assets identified as highly valued including adjacent private property.	APZ	342.3
WELLINGTON SHIRE	GP-MAC-BRI-0048	Briagolong - Middle Road	3km E of Briagolong	FRB	To develop fuel reduced areas of sufficient width and continuity to reduce the speed and intensity of bushfires.	BMZ	139.7
WELLINGTON SHIRE	GP-MAC-BRI-0032	Briagolong - Red Gum Reserve North	1km S of Briagolong	ECO	To develop fuel reduced areas of sufficient width and continuity to reduce the speed and intensity of bushfires.	BMZ	50.1
WELLINGTON SHIRE	GP-MAC-BRI-0063	Briagolong - Snail Pace Road	4km N of Briagolong	FRB	To develop fuel reduced areas of sufficient width and continuity to reduce the speed and intensity of bushfires.	BMZ	172.2
WELLINGTON SHIRE	GP-MAC-BRI-0053	BRIAGOLONG - TOGGLE HILL TRACK NORTH	18KM N OF BRIAGOLONG	FRB	To develop fuel reduced areas of sufficient width and continuity to reduce the speed and intensity of bushfires.	BMZ	530.4
WELLINGTON SHIRE	GP-MAC-DGO-0019	Cobbannah - Pretty Boy Hill	17km SW of Dargo	FRB	To provide bushfire protection by reducing overall fuel hazard and bushfire hazard in the landscape.	LMZ	424.3
WELLINGTON SHIRE	GP-MAC-HEY-0002	Coongulla - Geoghegans Road	5km NNW of Coongulla	FRB	To provide the highest level of localised protection to human life, property and community assets identified as highly valued including Coongulla community.	APZ	56.6
WELLINGTON SHIRE	GP-MAC-HEY-0013	Coongulla - Kellys Loop Track	4km NNW of Coongulla	FRB	To provide the highest level of localised protection to human life, property and community assets identified as highly valued including Coongulla area.	APZ	201
WELLINGTON SHIRE	GP-MAC-HEY-0001	Coongulla - Mount Hedrick	7km NE of Coongulla	FRB	To develop fuel reduced areas of sufficient width and continuity to reduce the speed and intensity of bushfires.	BMZ	1529.4
WELLINGTON SHIRE	GP-MAC-HEY-0179	Cowwarr Weir - Stoney Creek Road	1km NW of Cowwarr Weir	FRB	To provide the highest level of localised protection to human life, property and community assets identified as highly valued including the Cowwarr community.	APZ	302.9

WELLINGTON SHIRE	GP-MAC-DGO-0015	Dargo - Birregun Road	10km NNW of Dargo	FRB	To develop fuel reduced areas of sufficient width and continuity to reduce the speed and intensity of bushfires.	BMZ	1803.5	Yes
ALPINE SHIRE	GP-MAC-DGO-0026	Dargo - Wonnangatta Valley Block 2	49km NW of Dargo	ECO	To modify the vegetation Structure across the planned area to assist the Promotion of Alpine Treeless.	LMZ	210.3	
WELLINGTON SHIRE	GP-MAC-YAR-0172	Darriman - Gravel Pit Track	7.5km NE of Woodside	FRB	To develop fuel reduced areas of sufficient width and continuity to reduce the speed and intensity of bushfires.	BMZ	129.8	
EAST GIPPSLAND SHIRE	GP-MAC-BRI-0074	Fernbank - Fernbank Track	9km E of Munro	FRB	To build on protection works in adjacent Asset Protection Zone.	BMZ	80.4	
WELLINGTON SHIRE	GP-MAC-YAR-0171	Giffard - Darriman Reserve Block 1	0.2km SE of Giffard	ECO	To modify the vegetation Structure across the planned area to assist the Promotion of Inland Plains Woodland.	LMZ	6.8	
WELLINGTON SHIRE	GP-MAC-YAR-0170	Giffard - Darriman Reserve Block 2	0.2km SE of Giffard	ECO	To modify the vegetation Structure across the planned area to assist the Promotion of Inland Plains Woodland.	LMZ	3.9	
WELLINGTON SHIRE	GP-MAC-YAR-0173	Giffard West - Joyces Road	2km S of Giffard West	FRB	To develop fuel reduced areas of sufficient width and continuity to reduce the speed and intensity of bushfires.	BMZ	200.8	
WELLINGTON SHIRE	GP-MAC-HEY-0021	Glenmaggie - Forest Edge	8km W of Glenmaggie	FRB	To provide the highest level of localised protection to human life, property and community assets identified as highly valued including the Glenmaggie area.	APZ	1066.4	
WELLINGTON SHIRE	GP-MAC-HEY-0180	*Glenmaggie - Gays Road	14km NW of Glenmaggie	FRB	To provide bushfire protection by reducing overall fuel hazard and bushfire hazard in the landscape.	LMZ	2715.4	
WELLINGTON SHIRE	GP-MAC-LSP-0011	LOCHSPORT - WEST THALIA	10KM SW OF LOCH SPORT	FRB	To modify the vegetation Structure across the planned area to assist the Promotion of New Holland Mice.	LMZ	114	Yes
ALPINE SHIRE	GP-MAC-DGO-0023	Mayford - Grasslands	41km N of Dargo	TO	To meet cultural burning practice of low intensity burns to enhance cultural values as desired by traditional owners.	LMZ	29.2	Yes
WELLINGTON SHIRE	GP-MAC-BRI-0081	Munro - Rail Reserve Block 1	0.5km SW of Munro	ECO	To modify the vegetation Abundance across the planned area to assist the Promotion of Purple Diuris.	LMZ	13.1	

WELLINGTON SHIRE	GP-MAC-BRI-0056	VALENCIA CREEK - DERMODY'S	5km W of Valencia Creek	FRB	To provide the highest level of localised protection to human life, property and community assets identified as highly valued including Valencia Creek and surrounding private properties.	APZ	633.7	
WELLINGTON SHIRE	GP-MAC-BRI-0064	Valencia Creek - Still Road	4km N of Valencia Creek	FRB	To provide the highest level of localised protection to human life, property and community assets identified as highly valued including Valencia Creek community.	APZ	566.9	
WELLINGTON SHIRE	GP-MAC-YAR-0174	Woodside - Betty Road	3km W of Woodside	FRB	To develop fuel reduced areas of sufficient width and continuity to reduce the speed and intensity of bushfires.	BMZ	825	

FFMVic Lead Macalister District Planned Burns 2023/24

Local Government Area	Burn Number	Burn Name	General Location	Burn Type	Land Management Objective	FMZ	Planned Burn Size (ha)	New Burn
WELLINGTON SHIRE	GP-MAC-BRI-0061	Boisdale - Green Hill Road	9.5km NW of Boisdale	FRB	To provide the highest level of localised protection to human life, property and community assets identified as highly valued including surrounding Valencia Creek area.	APZ	607.5	
WELLINGTON SHIRE	GP-MAC-BRI-0039	Briagolong - Hairs Road	8.5km NE of Briagolong	FRB	To provide the highest level of localised protection to human life, property and community assets identified as highly valued including Culloden and Briagolong communities.	APZ	148.0	
EAST GIPPSLAND SHIRE	GP-MAC-BRI-0070	Cobbannah - Calajero Divide Track	12km NW of Glenaladale	FRB	To develop fuel reduced areas of sufficient width and continuity to reduce the speed and intensity of bushfires.	BMZ	1639.9	
WELLINGTON SHIRE	GP-MAC-YAR-0050	*Giffard West - 4316 South Gippsland Hwy	5km N of Giffard West	FRB	To provide bushfire protection by reducing overall fuel hazard and bushfire hazard in the landscape.	LMZ	189.1	
WELLINGTON SHIRE	GP-MAC-HEY-0022	Glenmaggie - Kellys Road	5.5km NW of Glenmaggie	FRB	To develop fuel reduced areas of sufficient width and continuity to reduce the speed and intensity of bushfires.	BMZ	1143.6	
WELLINGTON SHIRE	GP-MAC-BRI-0082	Munro - Rail Reserve Block 3	3km E of Munro	ECO	To modify the vegetation Abundance across the planned area to assist the Promotion of Purple Diuris.	LMZ	22.3	

WELLINGTON SHIRE	GP-MAC-BRI-0055	STOCKDALE - RIDLEYS TRK	2km W of Stockdale	FRB	To provide the highest level of localised protection to human life, property and community assets identified as highly valued including Stockdale and Briagolong community.	APZ	190.6	
WELLINGTON SHIRE	GP-MAC-BRI-0068	Stratford - Blackall Creek	4km E of Briagolong	FRB	To provide bushfire protection by reducing overall fuel hazard and bushfire hazard in the landscape.	LMZ	140.3	
WELLINGTON SHIRE	GP-MAC-BRI-0072	Valencia Creek - Gillios Road	7km N of Valencia Creek	FRB	To develop fuel reduced areas of sufficient width and continuity to reduce the speed and intensity of bushfires.	BMZ	642.2	
WELLINGTON SHIRE	GP-MAC-BRI-0073	Valencia Creek - Snows Track	8km NW of Valencia Creek	FRB	To develop fuel reduced areas of sufficient width and continuity to reduce the speed and intensity of bushfires.	BMZ	1475.8	
WELLINGTON SHIRE	GP-MAC-YAR-0175	Won Wron - Sandridge Track	3km NE of Won Wron	FRB	To develop fuel reduced areas of sufficient width and continuity to reduce the speed and intensity of bushfires.	BMZ	100.8	
WELLINGTON SHIRE	GP-MAC-YAR-0176	Woodside - Starling Track	7km NW of Woodside	FRB	To develop fuel reduced areas of sufficient width and continuity to reduce the speed and intensity of bushfires.	BMZ	156.6	
WELLINGTON SHIRE	GP-MAC-BRI-0044	Woolenook - 24 Track	16km NW of Briagolong	FRB	To develop fuel reduced areas of sufficient width and continuity to reduce the speed and intensity of bushfires.	BMZ	435.3	
WELLINGTON SHIRE	GP-MAC-DGO-0009	WATERFORD - MCCARTHY SPUR TK	0.2km S of Waterford	FRB	To develop fuel reduced areas of sufficient width and continuity to reduce the speed and intensity of bushfires.	BMZ	2035.3	
EAST GIPPSLAND SHIRE	GP-MAC-BRI-0069	Cobbannah - Davey Knob Road	11km NW of Glenaladale	FRB	To develop fuel reduced areas of sufficient width and continuity to reduce the speed and intensity of bushfires.	BMZ	1699.8	
WELLINGTON SHIRE	GP-MAC-HEY-0024	Coongulla - Avon Track	15km NE of Coongulla	FRB	To develop fuel reduced areas of sufficient width and continuity to reduce the speed and intensity of bushfires.	BMZ	6126.2	
WELLINGTON SHIRE	GP-MAC-DGO-0018	*DARGO - PUNCHEN BUDWUD DIVIDE	5KM E OF DARGO	FRB	To develop fuel reduced areas of sufficient width and continuity to reduce the speed and intensity of bushfires.	BMZ	684	
WELLINGTON SHIRE	GP-MAC-HEY-0332	Tamboritha - Grasslands	20km NE of Licola	TO	To meet cultural burning practice of low intensity burns to enhance cultural values as desired by traditional owners.	LMZ	175	Yes

SCHEDULE 3: FFMVic LEAD TAMBO DISTRICT – PLANNED BURNING

FFMVic Lead Tambo District Planned Burns 2021/22

Local Government Area	Burn Number	Burn Name	General Location	Burn Type	Land Management Objective	FMZ	Planned Burn Size (ha)	New Burn
EAST GIPPSLAND SHIRE	GP-TBO-BAI-0006	Bruthen - OMaras Road	3km NE of Bruthen	FRB	To develop a fuel reduced area to the North East of the Bruthen community.	BMZ	188.7	
EAST GIPPSLAND SHIRE	GP-TBO-BAI-0024	Clifton Creek - Bark Bucket Creek	2.5km W of Clifton Creek	FRB	To provide the highest level of localised protection to human life, property and community assets identified as highly valued including the Clifton Creek Community.	APZ	268.6	
EAST GIPPSLAND SHIRE	GP-TBO-BAI-0002	Hillside - Hillside Lane South	3km WSW of Hillside	ECO	To modify the vegetation Composition across the planned area to assist the Promotion of Orchid and Grassland EVC's.	LMZ	3	
EAST GIPPSLAND SHIRE	GP-TBO-BAI-0017	MOUNT ALFRED - WATTLE CREEK ROAD	9.8km W of Bullumwaal	FRB	To provide bushfire protection by reducing overall fuel hazard and bushfire hazard in the landscape.	LMZ	681.2	
EAST GIPPSLAND SHIRE	GP-TBO-BAI-0007	Mt Alfred - Kill Me Dead Creek	22km NW of Bairnsdale	FRB	To provide bushfire protection by reducing overall fuel hazard and bushfire hazard in the landscape.	LMZ	492.1	
EAST GIPPSLAND SHIRE	GP-TBO-BAI-0020	Melwood - Melwood Boundary Track	1km W of Melwood	FRB	To develop a fuel reduced area to the North of the Flaggy Creek and Melwood communities.	BMZ	182.8	
EAST GIPPSLAND SHIRE	GP-TBO-BAI-0144	Melwood - Mia Mia Road Interface	15km NW of Bairnsdale	FRB	To provide the highest level of localised protection to human life, property and community assets identified as highly valued including adjacent private property, Kent Park and Mt Taylor Communications Tower.	APZ	4.7	Yes
EAST GIPPSLAND SHIRE	GP-TBO-BAI-0149	Melwood - Pea Hill Rd	13km NW of Bairnsdale	FRB	To develop a fuel reduced area to the North West of Melwood and private dwellings.	BMZ	13.9	Yes
EAST GIPPSLAND SHIRE	GP-TBO-BAI-0141	Clifton Creek - Orrs Road	10km N of Bairnsdale	FRB	To build on protection works in adjacent Asset Protection Zone.	BMZ	13.8	Yes

EAST GIPPSLAND SHIRE	GP-TBO-BAI-0034	Wuk Wuk - Harding Road East	10km NNW of Lindenow	FRB	To develop a fuel reduced area to the North West of Wuk Wuk, Flaggy Creek and Melwood communities.	BMZ	457.1	
EAST GIPPSLAND SHIRE	GP-TBO-NOW-0009	Buchan South - Davidsons Lane	6km SW of Buchan	FRB	To provide the highest level of localised protection to human life, property and community assets identified as highly valued including the Buchan South community.	APZ	677.4	
EAST GIPPSLAND SHIRE	GP-TBO-NOW-0292	Colquhoun - Oil Bore Road North	4.6km E of Swan Reach	FRB	To provide the highest level of localised protection to human life, property and community assets identified as highly valued including Kalimna West, Kalimna and Lakes Entrance communities. .	APZ	188.4	
EAST GIPPSLAND SHIRE	GP-TBO-NOW-0289	Nowa Nowa - Browns Tk South	3.5km S of Nowa Nowa	FRB	To provide the highest level of localised protection to human life, property and community assets identified as highly valued including Lake Tyers Aboriginal Trust. .	APZ	480.5	
EAST GIPPSLAND SHIRE	GP-TBO-NOW-0298	Nowa Nowa - Trident Arm	10 KM SSE OF NOWA NOWA	FRB	To provide bushfire protection by reducing overall fuel hazard and bushfire hazard in the landscape.	LMZ	402.7	
EAST GIPPSLAND SHIRE	GP-TBO-NOW-0014	NOWA NOWA - STONEY CREEK	11km NE of Lakes Entrance	FRB	To provide bushfire protection by reducing overall fuel hazard and bushfire hazard in the landscape.	LMZ	121.9	
EAST GIPPSLAND SHIRE	GP-TBO-NOW-0288	Tostaree - Old Tostaree Road	1.6km W of Tostaree	FRB	To develop fuel reduced areas of sufficient width and continuity to reduce the speed and intensity of bushfires.	BMZ	344.5	
EAST GIPPSLAND SHIRE	GP-TBO-NOW-0016	Nowa Nowa - Stockyard Break	3km NW of Nowa Nowa	FRB	To develop a fuel reduced area to the North West of Nowa Nowa Community.	BMZ	407.1	
EAST GIPPSLAND SHIRE	GP-TBO-NOW-0299	BRUTHEN - DEADHORSE CREEK	7km E of Bruthen	FRB	To develop fuel reduced areas of sufficient width and continuity to reduce the speed and intensity of bushfires.	BMZ	1208.4	
EAST GIPPSLAND SHIRE	GP-TBO-NOW-0364	Toorloo Arm - South Boundary Rd	6km N of Lakes Entrance	FRB	To provide the highest level of localised protection to human life, property and community assets identified as highly valued including Princes Hwy access at the private and forest interface. .	APZ	11.6	Yes
EAST GIPPSLAND SHIRE	GP-TAM-SCK-0040	Omeo Valley - Nine Mile Creek	8 km NW of Benambra	FRB	To develop a fuel reduced area to the North West of the Benambra community.	BMZ	4878.5	
EAST GIPPSLAND SHIRE	GP-TBO-SCK-0126	Omeo - Cousins Lane	2km SW of Omeo	FRB	To provide bushfire protection by reducing overall fuel hazard and bushfire hazard in the landscape.	LMZ	7.3	

EAST GIPPSLAND SHIRE	GP-TBO-SCK-0124	*Benambra - Macs Creek	13km ENE of Benambra	FRB	To provide bushfire protection by reducing overall fuel hazard and bushfire hazard in the landscape.	LMZ	3854	
EAST GIPPSLAND SHIRE	GP-TBO-BAI-0015	Lindenow South - Resides Road Rail Reserve NW	6.5km SW of Lindenow South	ECO	To modify the vegetation Abundance across the planned area to assist the Promotion of Orchid sp..	LMZ	4.1	
EAST GIPPSLAND SHIRE	GP-TBO-BAI-0019	Tabberabbera - Dead Bull Creek	2km SE of Tabberabbera	FRB	To provide bushfire protection by reducing overall fuel hazard and bushfire hazard in the landscape.	LMZ	609.9	
EAST GIPPSLAND SHIRE	GP-TBO-BAI-0155	Bruthen - Pipe Dump Road North	3km N of Bruthen	FRB	To provide the highest level of localised protection to human life, property and community assets identified as highly valued including The Private Interface to the East And the Township of Bruthen to the South.	APZ	147	Yes
EAST GIPPSLAND SHIRE	GP-TBO-NOW-0296	Nowa Nowa - Long Hill Track	1km SW of Nowa Nowa	FRB	To develop a fuel reduced area to the West of Nowa Nowa community.	BMZ	50.8	
ALPINE SHIRE	GP-TBO-SCK-0009	Dogs Grave - Birregan Road West	31km West of Swifts Creek	FRB	To provide bushfire protection by reducing overall fuel hazard and bushfire hazard in the landscape.	LMZ	2608.2	
EAST GIPPSLAND SHIRE	GP-TBO-NOW-0297	Colquhoun - Tin Shed Track	6km NW of Kalimna	FRB	To provide the highest level of localised protection to human life, property and community assets identified as highly valued including the Kalimna West community and Forestech.	APZ	348.4	

FFMVic Lead Tambo District Planned Burns 2022/23

Local Government Area	Burn Number	Burn Name	General Location	Burn Type	Land Management Objective	FMZ	Planned Burn Size (ha)	New Burn
EAST GIPPSLAND SHIRE	GP-TBO-BAI-0030	Lindenow South - Resides Road Rail reserve	4km West of Lindenow South	ECO	To modify the vegetation Structure across the planned area to assist the Promotion of Alluvial Plains Grassland.	LMZ	17.5	
EAST GIPPSLAND SHIRE	GP-TBO-SCK-0110	*OMEO - ZIG ZAG TRK	10km WNW Cassilis	FRB	To provide bushfire protection by reducing overall fuel hazard and bushfire hazard in the landscape.	LMZ	4080	

EAST GIPPSLAND SHIRE	GP-TBO-BAI-0029	Lindenow South - Buntines Road Rail Reserve	3.5km West of Lindenow South	ECO	To modify the vegetation Structure across the planned area to assist the Promotion of Alluvial Plains Grassland.	LMZ	9.5	
EAST GIPPSLAND SHIRE	GP-TBO-BAI-0023	Moormurrg Reserve - Leathams Road	10km SW of Bairnsdale	TO	To meet cultural burning practice of low intensity burns to enhance cultural values as desired by traditional owners.	LMZ	113.9	
EAST GIPPSLAND SHIRE	GP-TBO-BAI-0156	Bullumwaal - Muddy Gully Trk	2km S of Bullumwaal	FRB	To provide the highest level of localised protection to human life, property and community assets identified as highly valued including The township of Bullumwaal to the North, North East.	APZ	459.7	Yes
EAST GIPPSLAND SHIRE	GP-TBO-BAI-0032	Blonde Bay - Grass Tree North	5km SE of Goon Nure	FRB	To provide bushfire protection by reducing overall fuel hazard and bushfire hazard in the landscape.	LMZ	98.7	
EAST GIPPSLAND SHIRE	GP-TBO-BAI-0157	Bullumwaal - Argus Gap Road	4km N of Bullumwaal	FRB	To provide bushfire protection by reducing overall fuel hazard and bushfire hazard in the landscape.	LMZ	650.3	Yes
EAST GIPPSLAND SHIRE	GP-TBO-BAI-0151	Wuk Wuk - Cox Boundary Trk	10km NW of Lindenow	FRB	To provide the highest level of localised protection to human life, property and community assets identified as highly valued including Wuk Wuk to the South and Flaggy Creek to the South East.	APZ	314.3	Yes
EAST GIPPSLAND SHIRE	GP-TBO-BAI-0152	Mount Taylor - Jones Road	11km N of Bairnsdale	FRB	To provide the highest level of localised protection to human life, property and community assets identified as highly valued including the private interface and the townships of Clifton Creek to the North East and Mount Taylor to the South West.	APZ	122.6	Yes
EAST GIPPSLAND SHIRE	GP-TBO-BAI-0153	Melwood - Melwood School Rd	8km N of Lindenow	FRB	To build on protection works in adjacent Asset Protection Zone.	BMZ	92.2	Yes
EAST GIPPSLAND SHIRE	GP-TBO-BAI-0028	Bengworden - Hall Reserve	0km W of BENGWORDEN	TO	To meet cultural burning practice of low intensity burns to enhance cultural values as desired by traditional owners.	LMZ	33.8	
EAST GIPPSLAND SHIRE	GP-TBO-NOW-0365	Bald Hills - Mundy Plain	17km NW of Gelantipy	ECO	To modify the vegetation Composition across the planned area to assist the Promotion of Euphrasia Scabra.	LMZ	26.1	Yes
EAST GIPPSLAND SHIRE	GP-TBO-NOW-0018	LAKE TYERS - CLIFF ROAD	6km ENE of Lakes Entrance	FRB	To provide the highest level of localised protection to human life, property and community assets identified as highly valued including adjacent properties and the Lake Tyers Beach Road (community access).	APZ	18.1	

EAST GIPPSLAND SHIRE	GP-TBO-NOW-0291	Nowa Nowa - Pettmans Road East	7km SW of Nowa Nowa	FRB	To develop fuel reduced areas of sufficient width and continuity to reduce the speed and intensity of bushfires.	BMZ	605.9	
EAST GIPPSLAND SHIRE	GP-TBO-NOW-0366	Bruthen - Bruthen Nowa Nowa Road	5km SE of Bruthen	FRB	To provide the highest level of localised protection to human life, property and community assets identified as highly valued including The princes Hwy to the North, Private interface and Whelans Quarry to the South.	APZ	4	Yes
EAST GIPPSLAND SHIRE	GP-TBO-NOW-0367	Toorloo Arm - Eagleson Track	9km SW of Nowa Nowa	FRB	To build on protection works in adjacent Asset Protection Zone.	BMZ	41.3	Yes
EAST GIPPSLAND SHIRE	GP-TBO-NOW-0191	Tostaree - Circle Road	14 KM SE OF NOWA NOWA	FRB	To develop fuel reduced areas of sufficient width and continuity to reduce the speed and intensity of bushfires.	BMZ	371.9	
EAST GIPPSLAND SHIRE	GP-TBO-NOW-0383	*Tostaree - Lower Tostaree Rd	1km S of Tostaree	FRB	To develop a fuel reduced area to the South of Gas Pipe Line and Private High Value Assets to the East..	BMZ	79.6	Yes
EAST GIPPSLAND SHIRE	GP-TBO-NOW-0368	Nowa Nowa - Lyles Brk	5km SE of Nowa Nowa	FRB	To develop a fuel reduced area to the East of Bruthen - Nowa Nowa Rd and Bruthen - Buchan Rd.	BMZ	406.7	Yes
EAST GIPPSLAND SHIRE	GP-TBO-NOW-0371	Lakes Entrance - South Boundary Rd	6km N of Lakes Entrance	FRB	To provide the highest level of localised protection to human life, property and community assets identified as highly valued including Private Interface and the Great Lakes Airport to the South.	APZ	268.5	Yes
EAST GIPPSLAND SHIRE	GP-TBO-NOW-0385	Butchers Ridge - Dawson	10km SW of Butchers Ridge	FRB	To build on protection works in adjacent Asset Protection Zone.	BMZ	4444.8	Yes
EAST GIPPSLAND SHIRE	GP-TBO-SCK-0159	Anglers Rest - Lower Bundara River	16km NW of Omeo	FRB	To provide bushfire protection by reducing overall fuel hazard and bushfire hazard in the landscape.	LMZ	383.8	Yes
EAST GIPPSLAND SHIRE	GP-TBO-SCK-0007	Omeo - Oriental Claims	1 km W Omeo	FRB	To develop a fuel reduced area to the South West of the Omeo township and remove accumulated fuels.	BMZ	85.2	
EAST GIPPSLAND SHIRE	GP-TBO-SCK-0160	Bindi - Spring Hill Trk	11km E of Omeo	FRB	To provide bushfire protection by reducing overall fuel hazard and bushfire hazard in the landscape.	LMZ	3099.3	Yes
EAST GIPPSLAND SHIRE	GP-TBO-SCK-0161	Beloka SF - Buenba Gap Track	19km SW of Benambra	FRB	To provide bushfire protection by reducing overall fuel hazard and bushfire hazard in the landscape.	LMZ	510.5	Yes
EAST GIPPSLAND SHIRE	GP-TBO-SCK-0164	Brumby - Mcdougalls Spur Track	19km SE of Benambra	FRB	To provide bushfire protection by reducing overall fuel hazard and bushfire hazard in the landscape.	LMZ	2144.2	Yes

EAST GIPPSLAND SHIRE	GP-TBO-SCK-0162	*Tongio - Hammond Break	8km E of Swifts Creek	FRB	To build on protection works in adjacent Asset Protection Zone.	BMZ	3060.2	Yes
----------------------	-----------------	-------------------------	-----------------------	-----	---	-----	--------	-----

FFMVic Lead Tambo District Planned Burns 2023/24

Local Government Area	Burn Number	Burn Name	General Location	Burn Type	Land Management Objective	FMZ	Planned Burn Size (ha)	New Burn
EAST GIPPSLAND SHIRE	GP-TBO-BAI-0041	Fernbank - Sinclairs Road Rail Reserve	0.5 km West of Fernbank	ECO	To modify the vegetation Structure across the planned area to assist the Promotion of Purple Diuris.	LMZ	14.6	
EAST GIPPSLAND SHIRE	GP-TBO-BAI-0163	Mitchell River NP - Calvi Track	16km N of Glenaladale	FRB	To provide bushfire protection by reducing overall fuel hazard and bushfire hazard in the landscape.	LMZ	1878.8	Yes
EAST GIPPSLAND SHIRE	GP-TBO-BAI-0169	Bruthen - Pipe Dump Road South	2km N of Bruthen	FRB	To provide the highest level of localised protection to human life, property and community assets identified as highly valued including Bruthen.	APZ	54.8	Yes
EAST GIPPSLAND SHIRE	GP-TBO-BAI-0158	Boggy Creek - Tower Road	9km W of Clifton Creek	FRB	To provide the highest level of localised protection to human life, property and community assets identified as highly valued including The Mount Taylor fire tower.	APZ	120.2	Yes
EAST GIPPSLAND SHIRE	GP-TBO-BAI-0038	Bullumwaal - Mt Alfred	1km W of Boggy Creek	FRB	To provide bushfire protection by reducing overall fuel hazard and bushfire hazard in the landscape.	LMZ	429.9	
EAST GIPPSLAND SHIRE	GP-TBO-BAI-0165	Marthavale - Friday Spur Tk	15km W of Dargo	FRB	To develop fuel reduced areas of sufficient width and continuity to reduce the speed and intensity of bushfires.	BMZ	3347.3	Yes
EAST GIPPSLAND SHIRE	GP-TBO-NOW-0374	Buchan South - Wattle Hill Road	5km NW of Buchan South	FRB	To build on protection works in adjacent Asset Protection Zone.	BMZ	775.6	Yes
EAST GIPPSLAND SHIRE	GP-TBO-NOW-0285	Toorloo Arm - Long Point Track	7km NE of Lakes Entrance	FRB	To build on protection works in adjacent Asset Protection Zone.	BMZ	242	
EAST GIPPSLAND SHIRE	GP-TBO-NOW-0375	Gillingall - Green Hill Trk	10km W of Butchers Ridge	TO	To meet cultural burning practice of low intensity burns to enhance cultural values as desired by traditional owners.	LMZ	1574.2	Yes
EAST GIPPSLAND SHIRE	GP-TBO-NOW-0376	Lake Tyers - Pile Bay Tk	5km N of Lake Tyers	FRB	To provide bushfire protection by reducing overall fuel hazard and bushfire hazard in the landscape.	LMZ	558.8	Yes

EAST GIPPSLAND SHIRE	GP-TBO-NOW-0378	Nowa Nowa - Old Nowa Nowa Rd	8km W of Nowa Nowa	FRB	To develop fuel reduced areas of sufficient width and continuity to reduce the speed and intensity of bushfires.	BMZ	276	Yes
EAST GIPPSLAND SHIRE	GP-TBO-NOW-0380	Tostaree - Partellis Crossing Rd	6km E of Tostaree	FRB	To provide the highest level of localised protection to human life, property and community assets identified as highly valued including The Princes Hwy to the South, Gas Pipeline to the North and the Private interface to the East.	APZ	189.4	Yes
EAST GIPPSLAND SHIRE	GP-TBO-NOW-0381	Wombat Creek - Wombat Rd	7.5km E of Tostaree	FRB	To provide bushfire protection by reducing overall fuel hazard and bushfire hazard in the landscape.	LMZ	9.9	Yes
EAST GIPPSLAND SHIRE	GP-TBO-NOW-0384	Wulgulmerang - Seldom Seen	16km N of Gelantipy	FRB	To develop fuel reduced areas of sufficient width and continuity to reduce the speed and intensity of bushfires.	BMZ	13662.3	Yes
EAST GIPPSLAND SHIRE	GP-TBO-SCK-0008	*Brookville - Dead Bird Spur North	8km South West of Swifts Creek	FRB	To develop fuel reduced areas of sufficient width and continuity to reduce the speed and intensity of bushfires.	BMZ	345.1	
EAST GIPPSLAND SHIRE	GP-TBO-SCK-0125	*Omeo - Mt Sam	3km NW Omeo	FRB	To provide bushfire protection by reducing overall fuel hazard and bushfire hazard in the landscape.	LMZ	1211.9	
EAST GIPPSLAND SHIRE	GP-TBO-SCK-0169	Bindi - Splitters Road	11km SE of Omeo	FRB	To provide bushfire protection by reducing overall fuel hazard and bushfire hazard in the landscape.	LMZ	2537.8	Yes
EAST GIPPSLAND SHIRE	GP-TBO-SCK-0175	Anglers Rest - Big River	16km N of Omeo	FRB	To provide bushfire protection by reducing overall fuel hazard and bushfire hazard in the landscape.	LMZ	5959.9	Yes
EAST GIPPSLAND SHIRE	GP-TBO-SCK-0174	Shanahan - Parslow Track	15km E of Swifts Creek	FRB	To provide bushfire protection by reducing overall fuel hazard and bushfire hazard in the landscape.	LMZ	957.6	Yes
EAST GIPPSLAND SHIRE	GP-TBO-SCK-0173	Benambra - Pheasant Creek	24km N of Benambra	FRB	To develop fuel reduced areas of sufficient width and continuity to reduce the speed and intensity of bushfires.	BMZ	12097.9	Yes
EAST GIPPSLAND SHIRE	GP-TBO-BAI-0164	Marthavale - Barmouth Spur	17km NE of Bullumwaal	FRB	To provide bushfire protection by reducing overall fuel hazard and bushfire hazard in the landscape.	LMZ	26605.1	Yes
EAST GIPPSLAND SHIRE	GP-TBO-BAI-0170	Blond Bay WR - Waddie Point Tk	13.5km SW of Paynesville	TO	To meet cultural burning practice of low intensity burns to enhance cultural values as desired by traditional owners.	BMZ	14.8	Yes

SCHEDULE 4: FFMVic LEAD SNOWY DISTRICT – PLANNED BURNING

FFMVic Lead Snowy District Planned Burns 2021/22

Local Government Area	Burn Number	Burn Name	General Location	Burn Type	Land Management Objective	FMZ	Planned Burn Size (ha)	New Burn
EAST GIPPSLAND SHIRE	GP-SNO-BOC-0034	Bendoc - Clarkeville Road	0.5km S of Bendoc	FRB	To provide the highest level of localised protection to human life, property and community assets identified as highly valued including Bendoc Township.	APZ	27.7	
EAST GIPPSLAND SHIRE	GP-SNO-BOC-0041	Bonang - Telecom Track	6km N of Bonang	FRB	To develop a fuel reduced area to the North of Bonang & surrounding communities.	BMZ	852	
EAST GIPPSLAND SHIRE	GP-SNO-ORB-0064	Cabbage Tree - Emphields Track	2km E of Cabbage Tree Creek	FRB	To develop a fuel reduced area to the North East of Cabbage Tree Township.	BMZ	190.8	
EAST GIPPSLAND SHIRE	GP-SNO-ORB-0125	Cabbage Tree - Palm Track	2km Sw of Cabbage Tree	FRB	To provide bushfire protection by reducing overall fuel hazard and bushfire hazard in the landscape.	LMZ	2236.5	
EAST GIPPSLAND SHIRE	GP-SNO-CAN-0101	Cann River - Station Street	0.1km NE of Cann River	FRB	To provide the highest level of localised protection to human life, property and community assets identified as highly valued including Cann River Township.	APZ	43.6	Yes
EAST GIPPSLAND SHIRE	GP-SNO-ORB-0007	Marlo - Bushland East	0.1km E of Marlo	FRB	To provide the highest level of localised protection to human life, property and community assets identified as highly valued including Marlo Township.	APZ	14.6	
EAST GIPPSLAND SHIRE	GP-SNO-ORB-0045	Newmerella - Robinsons Road	0.1km NW of Newmerella	FRB	To provide the highest level of localised protection to human life, property and community assets identified as highly valued including Newmerella Township.	APZ	60.9	
EAST GIPPSLAND SHIRE	GP-SNO-CAN-0090	Noorinbee - Magazine Track	6km N of Cann River	TO	To meet cultural burning practice of low intensity burns to enhance cultural values as desired by traditional owners.	BMZ	211.2	
EAST GIPPSLAND SHIRE	GP-SNO-ORB-0047	Orbost - South Boundary Road	2 kms North East of Orbost	FRB	To provide the highest level of localised protection to human life, property and community assets identified as highly valued including Orbost DELWP Depot & surrounding community.	APZ	36.8	
EAST GIPPSLAND SHIRE	GP-SNO-ORB-0059	Orbost - Wombat Track	15 Km South West of Orbost	FRB	To develop a fuel reduced area to the South West of Wombat Creek, Waygara & Simpsons Creek Communities.	BMZ	962.6	

FFMVic Lead Snowy District Planned Burns 2022/23

Local Government Area	Burn Number	Burn Name	General Location	Burn Type	Land Management Objective	FMZ	Planned Burn Size (ha)	New Burn
EAST GIPPSLAND SHIRE	GP-SNO-BOC-0035	Bendoc - Ted Track	1.5km NW of Bendoc	FRB	To provide the highest level of localised protection to human life, property and community assets identified as highly valued including Bendoc Township.	APZ	174.5	
EAST GIPPSLAND SHIRE	GP-SNO-ORB-0132	Bemm River - Binn Beach	4km SW of Bemm River	TO	To meet cultural burning practice of low intensity burns to enhance cultural values as desired by traditional owners.	LMZ	21.2	
EAST GIPPSLAND SHIRE	GP-SNO-BOC-0020	Bonang - Strawberry Track	8 kms North of Bonang Township	FRB	To develop fuel reduced areas of sufficient width and continuity to reduce the speed and intensity of bushfires.	BMZ	163.7	
EAST GIPPSLAND SHIRE	GP-SNO-ORB-0123	Cabbage Tree Creek - Princes Highway	1.5km E of Cabbage Tree Creek	FRB	To develop a fuel reduced area to the East of Cabbage Tree Private Property.	BMZ	54.2	
EAST GIPPSLAND SHIRE	GP-SNO-BOC-0022	Delegate - Dead End Track	4 kms South East of Delegate River	FRB	To develop fuel reduced areas of sufficient width and continuity to reduce the speed and intensity of bushfires.	BMZ	612.5	
EAST GIPPSLAND SHIRE	GP-SNO-ORB-0067	*Marlo - Aerodrome	5km E of Marlo	FRB	To develop a fuel reduced area to the West of Marlo Aerodrome, Snowy River Campus & Surrounding Communities.	BMZ	532.6	
EAST GIPPSLAND SHIRE	GP-SNO-ORB-0044	Marlo - Powerlines Track	0.1km E of Marlo	FRB	To provide the highest level of localised protection to human life, property and community assets identified as highly valued including Marlo Township.	APZ	5.5	
EAST GIPPSLAND SHIRE	GP-SNO-ORB-0124	Newmerella - Corringale Road	3km SW of Newmerella	FRB	To provide the highest level of localised protection to human life, property and community assets identified as highly valued including Newmerella Township.	APZ	417.8	
EAST GIPPSLAND SHIRE	GP-SNO-ORB-0139	Newmerella - Joiners Road	2km W of Newmerella	FRB	To provide the highest level of localised protection to human life, property and community assets identified as highly valued including Newmerella Township.	APZ	34.5	Yes

FFMVic Lead Snowy District Planned Burns 2023/24

Local Government Area	Burn Number	Burn Name	General Location	Burn Type	Land Management Objective	FMZ	Planned Burn Size (ha)	New Burn
EAST GIPPSLAND SHIRE	GP-SNO-BOC-0023	Bonang - Rising Sun Road	2km NW of Bonang	FRB	To develop a fuel reduced area to the North West of Bonang Community.	BMZ	434.5	
EAST GIPPSLAND SHIRE	GP-SNO-ORB-0140	Bemm River - Alans Track	0.1km W of Bemm River	FRB	To provide the highest level of localised protection to human life, property and community assets identified as highly valued including Bemm River Township.	APZ	35.3	Yes
EAST GIPPSLAND SHIRE	GP-SNO-BOC-0054	*Bendoc - Bendoc River	0.8km W of Bendoc	FRB	To develop fuel reduced areas of sufficient width and continuity to reduce the speed and intensity of bushfires.	BMZ	49.2	Yes
EAST GIPPSLAND SHIRE	GP-SNO-ORB-0043	Cabbage Tree - Marlo Cabbage Tree Road	4 Kms South of Cabbage Tree	FRB	To develop fuel reduced areas of sufficient width and continuity to reduce the speed and intensity of bushfires.	BMZ	431.4	
EAST GIPPSLAND SHIRE	GP-SNO-ORB-0142	Marlo - Bushland Central	0.1km N of Marlo	FRB	To provide the highest level of localised protection to human life, property and community assets identified as highly valued including Marlo Township.	APZ	19.8	
EAST GIPPSLAND SHIRE	GP-SNO-ORB-0143	Marlo - Cemetery	1km E of Marlo	FRB	To provide the highest level of localised protection to human life, property and community assets identified as highly valued including Marlo Township.	APZ	11.8	Yes
EAST GIPPSLAND SHIRE	GP-SNO-ORB-0144	Newmerella - Lagoon Track	3km SW of Newmerella	FRB	To provide the highest level of localised protection to human life, property and community assets identified as highly valued including Newmerella Township.	APZ	1184.9	Yes
EAST GIPPSLAND SHIRE	GP-SNO-ORB-0145	Simpsons Creek - Princes Highway	7.5km W of Newmerella	FRB	To provide the highest level of localised protection to human life, property and community assets identified as highly valued including Simpsons Creek.	APZ	6.5	Yes
EAST GIPPSLAND SHIRE	GP-SNO-CAN-0169	Wingan River - Wingan LMB	24km E of Cann River	FRB	To provide bushfire protection by reducing overall fuel hazard and bushfire hazard in the landscape.	LMZ	20801.1	Yes
EAST GIPPSLAND SHIRE	GP-SNO-ORB-0211	Snowy River NP - Snowy River LMB	22km SE of Gelantipy	FRB	To provide bushfire protection by reducing overall fuel hazard and bushfire hazard in the landscape.	LMZ	34838.6	Yes
EAST GIPPSLAND SHIRE	GP-SNO-BOC-0092	Bonang - Bowens LMB	18km W of Bonang	FRB	To provide bushfire protection by reducing overall fuel hazard and bushfire hazard in the landscape.	LMZ	24113.4	Yes

Appendix (2): CFA Schedules of Activities

These schedules contain the details of CFA-led planned burning activities. Please note that the planned burn year and season identified for each planned burn is indicative only and may be changed due to weather conditions and operational requirements.

The following abbreviations may be used: ‘*’ asterisk on burn name denotes a cross-tenure burn; COM – Committee of Management; PP – Private Property; FRB – Fuel Reduction Burn; ECO – Ecological burn; TO – Traditional Owner.

SCHEDULE 1: CFA LEAD DISTRICT 11 – PLANNED BURNING

CFA Lead District 11 Planned Burns 2021/22

Local Government Area	Burn Number	Burn Name	Burn Type	Land Management Objective	Planned Burn Size (ha)	New Burn
East Gippsland Shire	D11-19-008	Sarsfield - Great Alpine Rd 3	FRB	To develop fuel reduced areas of sufficient width and continuity to reduce the speed and intensity of bushfires.	1.2	No
East Gippsland Shire	D11-20-001	Mount Taylor - Bullumwaal Rd 1	FRB	To develop fuel reduced areas of sufficient width and continuity to reduce the speed and intensity of bushfires.	2.5	No
East Gippsland Shire	D11-20-020	Lake Tyers – Lake Tyers Aboriginal Trust 1	FRB	To provide the highest level of localised protection to human life, property and community assets identified as highly valued including the surrounding Lake Tyers Aboriginal Trust community	14.6	No
East Gippsland Shire	D11-20-012	Hillside – Bairnsdale – Dargo Rd 1	FRB	To develop fuel reduced areas of sufficient width and continuity to reduce the speed and intensity of bushfires.	2.8	No
East Gippsland Shire	D11-20-003	Mount Taylor - Holes Rd 1	FRB	To develop fuel reduced areas of sufficient width and continuity to reduce the speed and intensity of bushfires.	2.1	No
East Gippsland Shire	D11-20-010	Omeo - Omeo Park	FRB	To provide the highest level of localised protection to human life, property and community assets identified as highly valued including the Omeo community.	2.7	No
East Gippsland Shire	D11-20-008	Fernbank - 1045 Fernbank-Glenaladale Rd	FRB	To provide the highest level of localised protection to human life, property and community assets identified as highly valued including the Fernbank community and nearby timber plantations.	16.4	No
East Gippsland Shire	D11-20-004	Mount Taylor - Holes Rd 2	FRB	To develop fuel reduced areas of sufficient width and continuity to reduce the speed and intensity of bushfires.	1.6	No

East Gippsland Shire	D11-20-005	Omeo - Omeo Caravan Park	FRB	To provide the highest level of localised protection to human life, property and community assets identified as highly valued including the surrounding Omeo community.	2	No
East Gippsland Shire	D11-19-020	Mt Taylor - 920 Bullumwaal Rd	FRB	To provide the highest level of localised protection to human life, property and community assets identified as highly valued including the surrounding Mt Taylor community.	10.4	No
East Gippsland Shire	D11-20-011	Hillside - Princes Hwy 1	FRB	To develop fuel reduced areas of sufficient width and continuity to reduce the speed and intensity of bushfires.	7.3	No
East Gippsland Shire	D11-19-006	Sarsfield - Great Alpine Rd 1	FRB	To develop fuel reduced areas of sufficient width and continuity to reduce the speed and intensity of bushfires.	1.2	No
East Gippsland Shire	D11-20-023	Sarsfield - 50 Waterholes Rd	FRB	To provide the highest level of localised protection to human life, property and community assets identified as highly valued including the Sarsfield community.	23	No
East Gippsland Shire	D11-20-017	Clifton Creek – Whelans Quarry	FRB	To provide the highest level of localised protection to human life, property and community assets identified as highly valued including the surrounding Mount Taylor and Sarsfield communities.	30.5	No
East Gippsland Shire	D11-21-008	Bruthen – Great Alpine Rd 1	FRB	To develop fuel reduced areas of sufficient width and continuity to reduce the speed and intensity of bushfires.	3.2	Yes
East Gippsland Shire	D11-21-009	Clifton Creek – 595 Deptford Rd	FRB	To develop fuel reduced areas of sufficient width and continuity to reduce the speed and intensity of bushfires.	1.4	Yes
East Gippsland Shire	D11-21-010	Sarsfield – Great Alpine Rd 5	FRB	To develop fuel reduced areas of sufficient width and continuity to reduce the speed and intensity of bushfires.	1.9	Yes
East Gippsland Shire	D11-21-011	Wombat Creek – Princes Hwy 1	FRB	To develop fuel reduced areas of sufficient width and continuity to reduce the speed and intensity of bushfires.	2.2	Yes
East Gippsland Shire	D11-20-027	Marlo – Marlo-Conran Rd	FRB	To develop fuel reduced areas of sufficient width and continuity to reduce the speed and intensity of bushfires.	0.9	No

CFA Lead District 11 Planned Burns 2022/23

Local Government Area	Burn Number	Burn Name	Burn Type	Land Management Objective	Planned Burn Size (ha)	New Burn
East Gippsland Shire	D11-20-002	Mount Taylor - Bullumwaal Rd 2	FRB	To develop fuel reduced areas of sufficient width and continuity to reduce the speed and intensity of bushfires.	1	No
East Gippsland Shire	D11-19-018	Newmerella - Newmerella Recreation Reserve 2	FRB	To provide the highest level of localised protection to human life, property and community assets identified as highly valued including Newmerella Community Infrastructure.	1.4	No

East Gippsland Shire	D11-20-019	Hillside - Princes Hwy 2	FRB	To develop fuel reduced areas of sufficient width and continuity to reduce the speed and intensity of bushfires.	4.7	No
East Gippsland Shire	D11-20-006	Mount Taylor - Holes Rd 3	FRB	To develop fuel reduced areas of sufficient width and continuity to reduce the speed and intensity of bushfires.	5.9	No
East Gippsland Shire	D11-20-022	Mount Taylor - Mt Lookout Rd 1	FRB	To develop fuel reduced areas of sufficient width and continuity to reduce the speed and intensity of bushfires.	0.7	No
East Gippsland Shire	D11-21-006	Lake Tyers – Lake Tyers Aboriginal Trust 7	FRB	To provide the highest level of localised protection to human life, property and community assets identified as highly valued including the surrounding Lake Tyers Aboriginal Trust community	141	Yes
East Gippsland Shire	D11-20-015	Sarsfield – Recreation Reserve	FRB	To provide the highest level of localised protection to human life, property and community assets identified as highly valued including the Sarsfield community	7.8	No
East Gippsland Shire	D11-21-014	Forge Creek – 55 Waddy Point Rd	FRB	To provide the highest level of localised protection to human life, property and community assets identified as highly valued including the surrounding Forge Creek and Wattle Point community	16	Yes
East Gippsland Shire	D11-21-015	Bruthen – Great Alpine Rd 2	FRB	To develop fuel reduced areas of sufficient width and continuity to reduce the speed and intensity of bushfires	2.7	Yes
East Gippsland Shire	D11-21-016	Sarsfield – Great Alpine Rd 6	FRB	To develop fuel reduced areas of sufficient width and continuity to reduce the speed and intensity of bushfires	2.7	Yes
East Gippsland Shire	D11-21-012	Wombat Creek – Princes Hwy 2	FRB	To develop fuel reduced areas of sufficient width and continuity to reduce the speed and intensity of bushfires	2.6	Yes
East Gippsland Shire	D11-21-022	Johnsonville – Stephenson Rd 1	FRB	To develop fuel reduced areas of sufficient width and continuity to reduce the speed and intensity of bushfires	2	Yes
East Gippsland Shire	D11-21-020	Mount Taylor – Clifton West Rd 1	FRB	To develop fuel reduced areas of sufficient width and continuity to reduce the speed and intensity of bushfires	3.1	Yes
East Gippsland Shire	D11-21-023	Marlo – Marlo Plains Rd 1	FRB	To develop fuel reduced areas of sufficient width and continuity to reduce the speed and intensity of bushfires	1.1	Yes
East Gippsland Shire	D11-21-007	Sarsfield – Deptford Rd 1	FRB	To develop fuel reduced areas of sufficient width and continuity to reduce the speed and intensity of bushfires	0.9	Yes
East Gippsland Shire	D11-21-026	Sarsfield – Waterholes Rd 1	FRB	To develop fuel reduced areas of sufficient width and continuity to reduce the speed and intensity of bushfires	3.6	Yes

CFA Lead District 11 Planned Burns 2023/24

Local Government Area	Burn Number	Burn Name	Burn Type	Land Management Objective	Planned Burn Size (ha)	New Burn
East Gippsland Shire	D11-19-016	Marlo - 193 Marlo-Cabbage Tree Rd	FRB	To provide the highest level of localised protection to human life, property and community assets identified as highly valued including the surrounding Marlo community.	18	No
East Gippsland Shire	D11-20-016	Omeo - Hankshaws Hill Rd	FRB	To provide the highest level of localised protection to human life, property and community assets identified as highly valued including the Omeo community.	4	No
East Gippsland Shire	D11-19-019	Glenaladale – 3020 Bairnsdale-Dargo Rd	FRB	To provide the highest level of localised protection to human life, property and community assets identified as highly valued including the Glenaladale community.	35	No
East Gippsland Shire	D11-19-017	Newmerella - Newmerella Recreation Reserve 1	FRB	To provide the highest level of localised protection to human life, property and community assets identified as highly valued including the Newmerella Community Infrastructure.	2	No
East Gippsland Shire	D11-20-018	Hillside – Bairnsdale-Dargo Rd 2	FRB	To develop fuel reduced areas of sufficient width and continuity to reduce the speed and intensity of bushfires.	3.6	No
East Gippsland Shire	D11-19-007	Sarsfield – Great Alpine Rd 2	FRB	To develop fuel reduced areas of sufficient width and continuity to reduce the speed and intensity of bushfires	3.8	No
East Gippsland Shire	D11-19-005	Combienbar – Recreation Reserve	FRB	To provide the highest level of localised protection to human life, property and community assets identified as highly valued including Combienbar community Infrastructure	3.5	Yes
East Gippsland Shire	D11-21-001	Lake Tyers – Lake Tyers Aboriginal Trust 2	FRB	To provide the highest level of localised protection to human life, property and community assets identified as highly valued including the surrounding Lake Tyers Aboriginal Trust community	123.5	Yes
East Gippsland Shire	D11-21-013	Mallacoota – 65a Bastion Point Rd	FRB	To provide the highest level of localised protection to human life, property and community assets identified as highly valued including the Mallacoota township.	6	No
East Gippsland Shire	D11-20-021	Mount Taylor – Bullumwaal Rd 3	FRB	To develop fuel reduced areas of sufficient width and continuity to reduce the speed and intensity of bushfires.	1	No
East Gippsland Shire	D11-20-014	Mount Taylor – Mt Lookout Rd 2	FRB	To develop fuel reduced areas of sufficient width and continuity to reduce the speed and intensity of bushfires.	5	No

East Gippsland Shire	D11-20-013	Mount Taylor – Laytons Rd 1	FRB	To develop fuel reduced areas of sufficient width and continuity to reduce the speed and intensity of bushfires.	1	No
East Gippsland Shire	D11-20-007	Mount Taylor – Holes Rd 4	FRB	To develop fuel reduced areas of sufficient width and continuity to reduce the speed and intensity of bushfires	1.4	Yes
East Gippsland Shire	D11-21-017	Sarsfield – 580 Nicholson-Sarsfield Rd	FRB	To provide the highest level of localised protection to human life, property and community assets identified as highly valued including the surrounding Sarsfield community	17.7	Yes
East Gippsland Shire	D11-21-018	Wy Yung – 655 Orrs Rd	FRB	To provide the highest level of localised protection to human life, property and community assets identified as highly valued including the surrounding Wy Yung community	65.4	Yes
East Gippsland Shire	D11-21-019	Buchan – 303 Basin Rd	FRB	To provide the highest level of localised protection to human life, property and community assets identified as highly valued including the surrounding Buchan community	63.9	Yes
East Gippsland Shire	D11-21-021	Lake Bunga – Lake Bunga Reserve	FRB	To provide the highest level of localised protection to human life, property and community assets identified as highly valued including the surrounding Lake Bunga community	11.4	Yes
East Gippsland Shire	D11-21-024	Marlo – Marlo Plains Rd 2	FRB	To develop fuel reduced areas of sufficient width and continuity to reduce the speed and intensity of bushfires	2.3	Yes
East Gippsland Shire	D11-21-025	Sarsfield – Deptford Rd 2	FRB	To develop fuel reduced areas of sufficient width and continuity to reduce the speed and intensity of bushfires	2.9	Yes
East Gippsland Shire	D11-21-027	Kalimna West – Fergusons Lane	FRB	To develop fuel reduced areas of sufficient width and continuity to reduce the speed and intensity of bushfires	0.8	Yes

SCHEDULE 2: CFA LEAD DISTRICT 10 – PLANNED BURNING

CFA Lead District 10 Planned Burns 2021/22

Local Government Area	Burn Number	Burn Name	Burn Type	Land Management Objective	Planned Burn Size (ha)	New Burn
Wellington Shire	D10-19-010	Boisdale - 368 Back Wombat Road	FRB	To provide the highest level of localised protection to human life, property and community assets identified as highly valued including the surrounding Valencia Creek community.	25.7	No

Wellington Shire	D10-19-018	Winnindoo - Heyfield-Rosedale Road	FRB	To develop fuel reduced areas of sufficient width and continuity to reduce the speed and intensity of bushfires.	6.4	No
Wellington Shire	D10-19-011	Valencia Creek - Knackery Road 1	FRB	To provide the highest level of localised protection to human life, property and community assets identified as highly valued including the surrounding Valencia Creek community.	15.5	No
Wellington Shire	D10-20-003	Briagolong - Duffy Rd	FRB	To develop fuel reduced areas of sufficient width and continuity to reduce the speed and intensity of bushfires.	7.3	No
Wellington Shire	D10-20-007	Heyfield - Golf Course Road 2	FRB	To develop fuel reduced areas of sufficient width and continuity to reduce the speed and intensity of bushfires.	0.3	No
Wellington Shire	D10-19-024	Winnindoo - Cairnbrook Rd 2	FRB	To develop fuel reduced areas of sufficient width and continuity to reduce the speed and intensity of bushfires.	2.1	No
Wellington Shire	D10-19-025	Winnindoo - Cairnbrook Rd 3	FRB	To develop fuel reduced areas of sufficient width and continuity to reduce the speed and intensity of bushfires.	2.1	No
Wellington Shire	D10-19-008	Fulham - West Sale Aerodrome 2	FRB	To modify the vegetation Structure across the planned area to assist the Promotion of Inland Plains Woodland.	5.7	No
Wellington Shire	D10-19-022	Winnindoo - Three Chain Rd	FRB	To develop fuel reduced areas of sufficient width and continuity to reduce the speed and intensity of bushfires.	6	No
Wellington Shire	D10-21-001	Stratford – Princes Hwy 1	FRB	To develop fuel reduced areas of sufficient width and continuity to reduce the speed and intensity of bushfires	1.4	Yes
Wellington Shire	D10-21-002	Stratford – Bengworden Rd 1	FRB	To develop fuel reduced areas of sufficient width and continuity to reduce the speed and intensity of bushfires	2.2	Yes
Wellington Shire	D10-21-007	Dargo – 111 Lind Ave	FRB	To provide the highest level of localised protection to human life, property and community assets identified as highly valued including the surrounding Dargo community.	1.2	Yes
Wellington Shire	D10-21-008	Dargo – 129 Lind Ave	FRB	To provide the highest level of localised protection to human life, property and community assets identified as highly valued including the surrounding Dargo community.	0.2	Yes
Wellington Shire	D10-21-009	Dargo – 21 Kings Rd	FRB	To provide the highest level of localised protection to human life, property and community assets identified as highly valued including the surrounding Dargo community.	0.4	Yes

CFA Lead District 10 Planned Burns 2022/23

Local Government Area	Burn Number	Burn Name	Burn Type	Land Management Objective	Planned Burn Size (ha)	New Burn
Wellington Shire	D10-20-009	Glenmaggie - Tinamba-Glenmaggie Road 1	FRB	To provide the highest level of localised protection to human life, property and community assets identified as highly valued including the Glenmaggie Community.	30.2	No
Wellington Shire	D10-20-010	Robertsons Beach - 62 Langs Road	FRB	To provide the highest level of localised protection to human life, property and community assets identified as highly valued including the primary access road for Robinsons Beach Community.	2.9	No
Wellington Shire	D10-19-029	Valencia Creek - 35 Knackery Road	FRB	To provide the highest level of localised protection to human life, property and community assets identified as highly valued including the Valencia Creek Community.	17.9	No
Wellington Shire	D10-21-010	Dargo – 14 Cemetery Rd	FRB	To provide the highest level of localised protection to human life, property and community assets identified as highly valued including the surrounding Dargo community.	17.2	Yes
Wellington Shire	D10-21-011	Dargo – Recreation Reserve	FRB	To provide the highest level of localised protection to human life, property and community assets identified as highly valued including the surrounding Dargo community.	7.2	Yes
Wellington Shire	D10-21-004	Stratford – Bengworden Rd 2	FRB	To develop fuel reduced areas of sufficient width and continuity to reduce the speed and intensity of bushfires	2.6	Yes
Wellington Shire	D10-21-003	Stratford – Princes Hwy 2	FRB	To develop fuel reduced areas of sufficient width and continuity to reduce the speed and intensity of bushfires	2.1	Yes

CFA Lead District 10 Planned Burns 2023/24

Local Government Area	Burn Number	Burn Name	Burn Type	Land Management Objective	Planned Burn Size (ha)	New Burn
Wellington Shire	D10-19-016	Stradbroke-Andersons Lane 3	FRB	To provide the highest level of localised protection to human life, property and community assets identified as highly valued including Stradbroke and Giffard West communities.	29.9	No
Wellington Shire	D10-20-001	Valencia Creek - Knackery Road 2	FRB	To provide the highest level of localised protection to human life, property and community assets identified as highly valued including the surrounding Valencia Creek community.	26	No

Wellington Shire	D10-20-011	Won Wron - Cocksedges Road	FRB	To provide the highest level of localised protection to human life, property and community assets identified as highly valued including the Won Wron Community.	46.6	Yes
Wellington Shire	D10-19-013	Dutson Downs-Ecuador Drive	FRB	To provide bushfire protection by reducing overall fuel hazard and bushfire hazard in the landscape.	31.7	No
Wellington Shire	D10-19-014	Longford - Sale Pistol Club	FRB	To develop a fuel reduced area to the West of community infrastructure and assets.	6.5	No
Wellington Shire	D10-19-004	Golden Beach – Cooper St	FRB	To provide the highest level of localised protection to human life, property and community assets identified as highly valued including the Golden Beach community	69.2	Yes
Wellington Shire	D10-20-002	Valencia Creek - 59 Knackery Road	FRB	To provide the highest level of localised protection to human life, property and community assets identified as highly valued including the Valencia Creek Community and surrounding private assets.	18.3	No
Wellington Shire	D10-20-005	Glengarry – Cairnbrook Rd 1	FRB	To provide bushfire protection by reducing overall fuel hazard and bushfire hazard in the landscape	6.1	Yes
Wellington Shire	D10-19-015	Stradbroke- Anderson Lane 2	FRB	To provide the highest level of localised protection to human life, property and community assets identified as highly valued including Stradbroke and Giffard West communities.	32.9	No
Wellington Shire	D10-19-019	Giffard West - 4316 South Gippsland Hwy	FRB	To provide the highest level of localised protection to human life, property and community assets identified as highly valued including Giffard West and Stradbroke communities.	188.7	No
Wellington Shire	D10-21-014	Valencia Creek – 160 Boundary 14 Track	FRB	To provide the highest level of localised protection to human life, property and community assets identified as highly valued including the Valencia Creek community	24.1	Yes
Wellington Shire	D10-21-012	Dargo – 93 Lind Ave	FRB	To provide the highest level of localised protection to human life, property and community assets identified as highly valued including the surrounding Dargo community	1.3	Yes
Wellington Shire	D10-21-013	Dargo – Old Dargo Rd	FRB	To provide the highest level of localised protection to human life, property and community assets identified as highly valued including the surrounding Dargo community	59.7	Yes
Wellington Shire	D10-21-005	Stratford – Princes Hwy 3	FRB	To develop fuel reduced areas of sufficient width and continuity to reduce the speed and intensity of bushfires	2	Yes
Wellington Shire	D10-21-006	Stratford – Bengworden Rd 3	FRB	To develop fuel reduced areas of sufficient width and continuity to reduce the speed and intensity of bushfires	2.4	Yes

SCHEDULE 3: CFA LEAD DISTRICT 27 – PLANNED BURNING

CFA Lead District 27 Planned Burns 2021/22

Local Government Area	Burn Number	Burn Name	Burn Type	Land Management Objective	Planned Burn Size (ha)	New Burn
LATROBE CITY	D27-20-002	Morwell - Crinigan Bushland Reserve 2	FRB	To provide the highest level of localised protection to human life, property and community assets identified as highly valued including Maryvale Private Hospital, adjoining homes, Gippsland Water Facility, Morwell Golf Club, Gippsland Falcons Pavilion.	5	No
LATROBE CITY	D27-19-001	Churchill - Manning Drive	FRB	To provide the highest level of localised protection to human life, property and community assets identified as highly valued including adjacent homes.	11.5	No
LATROBE CITY	D27-19-009	Churchill - Ikara Way Reserve	FRB	To provide the highest level of localised protection to human life, property and community assets identified as highly valued including adjacent homes.	5	No
LATROBE CITY	D27-20-005	Moe - Edward Hunter Reserve 1	FRB	To provide the highest level of localised protection to human life, property and community assets identified as highly valued including adjacent dwellings and community.	8.6	No
LATROBE CITY	D27-19-010	Toongabbie -Old Walhalla Road	FRB	To provide the highest level of localised protection to human life, property and community assets identified as highly valued including adjacent homes.	11.2	No
LATROBE CITY	D27-19-006	Tyers – Tyers Road	FRB	To provide the highest level of localised protection to human life, property and community assets identified as highly valued including adjacent homes.	3.1	No
LATROBE CITY	D27-19-007	Yallourn North – Energy Australia Recreation Reserve	FRB	To provide the highest level of localised protection to human life, property and community and Power Industry assets identified as highly valued including adjacent dwellings and community.	9.9	No

CFA Lead District 27 Planned Burns 2022/23

Local Government Area	Burn Number	Burn Name	Burn Type	Land Management Objective	Planned Burn Size (ha)	New Burn
LATROBE CITY	D27-20-001	Morwell - Crinigan Bushland Reserve 1	FRB	To provide the highest level of localised protection to human life, property and community assets identified as highly valued including Maryvale Private Hospital, adjacent homes, Morwell Golf Club, Gippsland Water Factory, Gippsland Falcons Pavilion.	6.3	No
LATROBE CITY	D27-20-006	Moe - Edward Hunter Reserve 2	FRB	To provide the highest level of localised protection to human life, property and community assets identified as highly valued including adjacent dwellings, School and critical community infrastructure in Moe South.	8.3	No
LATROBE CITY	D10-15-001	Jeeralang Junction - Jumbuck road	FRB	To provide the highest level of localised protection to human life, property and community assets identified as highly valued including adjacent homes and critical community infrastructure including communications tower and domestic water supply.	1.1	No
LATROBE CITY	D27-19-008	Moe - Watsons Road	FRB	To provide the highest level of localised protection to human life, property and community assets identified as highly valued including adjacent homes.	6.5	No
LATROBE CITY	D27-19-002	Tyers - Fitzgibbons Road Reserve	FRB	To provide the highest level of localised protection to human life, property and community assets identified as highly valued including adjacent homes.	0.6	No

CFA Lead District 27 Planned Burns 2023/24

Local Government Area	Burn Number	Burn Name	Burn Type	Land Management Objective	Planned Burn Size (ha)	New Burn
LATROBE CITY	D27-20-004	Morwell - Crinigan Bushland Reserve 3	FRB	To provide the highest level of localised protection to human life, property and community assets identified as highly valued including Maryvale Private Hospital, adjoining homes, Gippsland Water Facility, Morwell Golf Club and Gippsland Falcons Soccer Stadium.	3.9	No

SCHEDULE 4: CFA LEAD DISTRICT 09 – PLANNED BURNING

CFA Lead District 09 Planned Burns 2021/22

Local Government Area	Burn Number	Burn Name	Burn Type	Land Management Objective	Planned Burn Size (ha)	New Burn
SOUTH GIPPSLAND SHIRE	D09-19-009	Mirboo North - Baths Road Reserve	FRB	To provide the highest level of localised protection to human life, property and community assets identified as highly valued including adjacent homes.	0.7	No
SOUTH GIPPSLAND SHIRE	D09-19-006	Fish Creek - Mathers Road	FRB	To provide the highest level of localised protection to human life, property and community assets identified as highly valued including adjacent homes.	1.6	No
BAW BAW SHIRE	D09-19-005	Rawson - Knotts Siding	FRB	To provide the highest level of localised protection to human life, property and community assets identified as highly valued including adjacent homes, Rawson township DELWP facility.	2.5	No
BAW BAW SHIRE	D09-20-001	Rawson - 180 Knotts Siding Road	FRB	To provide the highest level of localised protection to human life, property and community assets identified as highly valued including adjacent homes and the Rawson Township.	1.0	No
SOUTH GIPPSLAND SHIRE	D09-20-003	Nyora - Wuchatsch Reserve 2	FRB	To provide the highest level of localised protection to human life, property and community assets identified as highly valued including adjacent homes.	1.4	Yes

CFA Lead District 09 Planned Burns 2022/23

Local Government Area	Burn Number	Burn Name	Burn Type	Land Management Objective	Planned Burn Size (ha)	New Burn
SOUTH GIPPSLAND SHIRE	D09-19-008	Kongwak - Pioneer Reserve Block 2	FRB	To provide the highest level of localised protection to human life, property and community assets identified as highly valued including adjacent homes.	0.8	No
SOUTH GIPPSLAND SHIRE	D09-20-005	Mirboo North - Baths Road Reserve 2	FRB	To provide the highest level of localised protection to human life, property and community assets identified as highly valued including adjacent homes.	1.1	No

CFA Lead District 09 Planned Burns 2023/24

Local Government Area	Burn Number	Burn Name	Burn Type	Land Management Objective	Planned Burn Size (ha)	New Burn
SOUTH GIPPSLAND SHIRE	D09-20-006	Kongwak - Pioneer Reserve Block 5	FRB	To provide the highest level of localised protection to human life, property and community assets identified as highly valued including adjacent private dwellings.	0.5	No
SOUTH GIPPSLAND SHIRE	D09-20-004	Koonwarra - Koonwarra Reserve Gravel Pit 2	FRB	To provide the highest level of localised protection to human life, property and community assets identified as highly valued including adjacent community and industrial infrastructure.	1.9	No
SOUTH GIPPSLAND SHIRE	D09-19-004	Koonwarra - Koonwarra Reserve 5	FRB	To provide the highest level of localised protection to human life, property and community assets identified as highly valued including adjacent homes.	1.3	No
BAW BAW SHIRE	D09-20-002	Rawson - Tyers-Walhalla Road	FRB	To provide the highest level of localised protection to human life, property and community assets identified as highly valued including Rawson, adjacent homes and the Tyers Walhalla road.	0.8	No

Glossary

This glossary provides information on terms contained within the body of this document and the schedules.

BREA - Bushfire Risk Engagement Areas.

Burn Type – indicates the primary purpose of the burn.

Burn Number and Name– the unique identifier for each burn or planned fuel management activity.

Cross-tenure burn – a burn that covers both public and private land

Fire Management Zone (FMZ) – an area of public land in which fire is managed for specific asset, fuel and ECO objectives. Values included in this column can be APZ - Asset Protection Zone; BMZ – Bushfire Moderation Zone; LMZ - Landscape Management Zone, PBEZ – Planned Burn Exclusion Zone; or, NZ -Not Zoned.

Forest Fire Management Victoria (FFMVic) – FFMVic consists of specialist staff from DELWP, Parks Victoria, Melbourne Water and VicForests.

Land Management Objective - identifies the desired land management outcome(s) of the burn.

Lead Agency - The Lead Agency for a planned burn is determined by the burns distance from public land. Within 1.5 km of public land, planned burning on non-public land falls within DELWP’s legislative scope and DELWP can choose to be the Lead Agency. If it is outside 1.5 km of public land, DELWP is unable to undertake the planned burn; instead, the CFA will be the Lead Agency to undertake that burn.

Local Government Area (LGA) – the municipality in which most of the fuel management activity is located.

Location – a direction and distance of the planned burn from the nearest major township/locality.

Planned Burns - Planned burning is one of FFMVic and CFA’s most important fire prevention activities. It involves the controlled application of fire during periods of lower fire risk, to achieve one of three main purposes: fuel reduction (FRB), ecological (ECO) management and forest regeneration (REG).

It is important to understand that planned burning operations do not stop or eliminate the risk of bushfires. However, Victorian research, and similar information from other parts of Australia and overseas, clearly shows that firefighters have a much better chance of managing bushfires in areas where planned burns have been carried out.

Approved burns in this year’s Plan will require a range of preparation works to make the planned area ready to ignite when the weather and other conditions are right. Preparation works may include, brushing up or grading of existing boundaries and internal tracks, management of hazardous trees, the construction and preparation of boundary and control lines with machinery and pest plant controls. The preparation works will have on-site inspections which will assess the surrounding assets and planned burn objectives.

Private Property Burn – burn that occurs wholly on private land.

Planned Burn Size – the maximum area of the fuel management activity measured in hectares (ha), including areas specifically excluded from disturbance.

Residual Risk - The impacts on life and property that remain after planned burning and bushfires, we call the 'residual risk'. If residual risk is 100 per cent – there has been no fire in the landscape and no fuel reduced and we are at maximum risk where fires will spread and impact. If residual risk is at 70 per cent – the impacts to life and property will be reduced by about a third.

Strategic Fuelbreak: A strategic fuelbreak is a strip of land where vegetation has been modified to reduce the amount of fuel available to burn during a bushfire.

New Burn– ‘NEW’ = New burn did not appear on last year’s JFMP. *Blank box* = Not a new burn. Burn was approved in the previous JFMP but has not been carried out, it is included in this JFMP and may be conducted at any time.

Non-Burning Fuel Treatments – Non-burning fuel treatments such as the maintenance and construction of fire control lines, fire access tracks, fuel breaks, fire infrastructure and other fuel management activities are required to support the planned burning program. Treatments to achieve these works can include slashing, pruning, chemical application (in alignment with safety standards), grazing or other operations (such as ploughing, mulching or rolling) that may be more appropriate or practical in certain areas. For example, fuel on small areas or blocks located within townships may be treated mechanically, where burning is impractical. These methods may also be more suitable in certain vegetation types.

