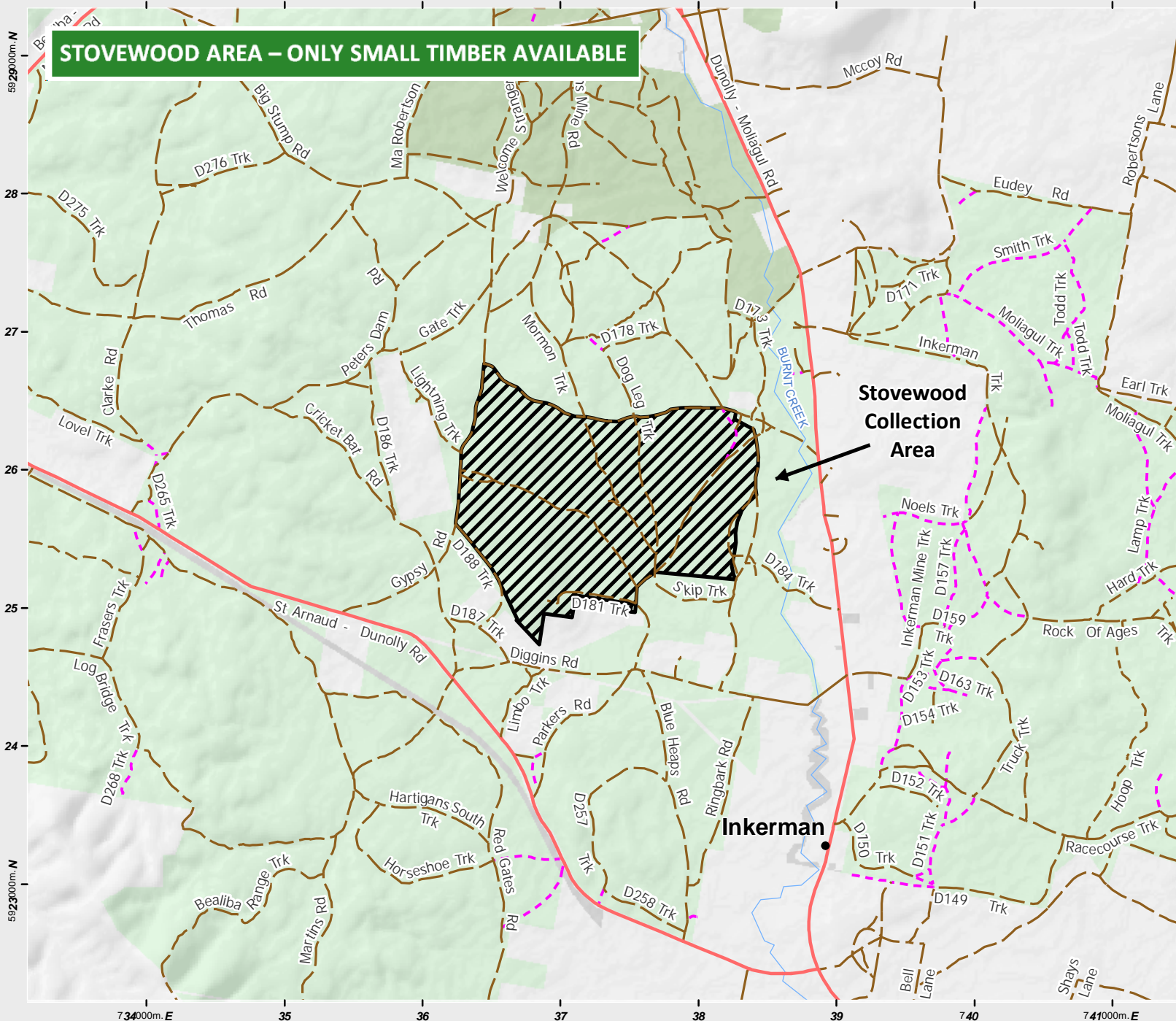


DOMESTIC FIREWOOD COLLECTION AREA MAP

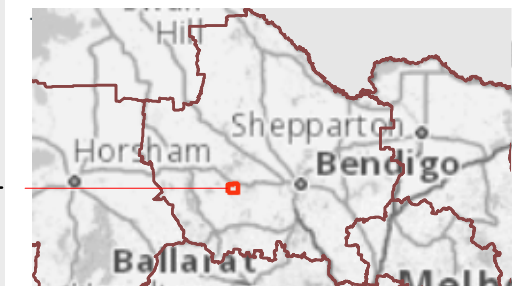
Domestic Firewood Collection Area Name: **One Eye - STOVEWOOD** Region: **Loddon Mallee** District: **Murray Goldfields** Forest Name: **Bealiba-Barp State Forest**



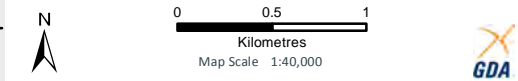
Legend

- Large Town
- Town
- Main Road (Sealed)
- Local Road
- 2wd
- 4wd
- - - Unmaintained
- Minor Watercourse
- ▨ Firewood Collection Area
- Parks and Reserves
- State Forest & Forest Park
- Other Public Land

There is no guarantee that firewood will be available for collection in the domestic firewood collection area after it has been opened. All persons entering and collecting in the domestic firewood collection area must have regard for their safety and the safety of others and must comply with all relevant laws when in State forest/Parks.



LEGL/18-157



Map produced by GIS Unit, Loddon Mallee Region, August 2018.
 Projection: Universal Transverse Mercator. Datum: Geocentric Datum of Australia 1994 ~ GDA94. Grid lines show 1000 Metre intervals of the Map Grid of Australia (MGA), Zone 54.

Disclaimer
 This publication may be of assistance to you but the State of Victoria and its employees do not guarantee that the publication is without flaw of any kind or is wholly appropriate for your particular purpose and therefore disclaims all liability for any error, loss or other consequence which may arise from you relying on any information in this publication.

Accessibility
 If you would like to receive this publication in an accessible format such as large print or black and white please telephone 136 186, or email customer.service@delwp.vic.gov.au. Deaf, hearing impaired or speech impaired? Call us via the National Relay Service on 133 677 or visit www.relay.vic.gov.au

© The State of Victoria
 Department of Environment, Land, Water and Planning 2018

This is a copy of the plan (map) that has been lodged in the Central Plan Office. The plan lodged in the Central Plan Office may be viewed at www.landata.vic.gov.au



Domestic Firewood Collection Area

Firewood collection seasons: 1 March to 30 June (inclusive)
1 September to 30 November (inclusive)

Firewood Collection Rules

Only collect firewood from within a designated domestic firewood collection area and during a domestic firewood season.

Only collect fallen or felled trees.

Do not collect more than 2m³ per person per day. Note: 1m³ is approximately a 1.8m (6') x 1.2m (4') trailer of split firewood neatly stacked to a height of 0.5m (20").

Do not collect more than 16m³ per household per financial year.

It is illegal to sell firewood collected from domestic collection areas or to use the wood in a commercial enterprise.

Heavy vehicles (> 4.5 tonne GVM) (including any trailer) must not be brought into or used in a domestic firewood collection area.

Heavy machinery (e.g. a bulldozer, crane, excavator, forwarder, hydraulic log splitter, saw bench, skidder, skid steer loader and tractor) must not be brought into or used in a firewood collection area.

Do not tow or winch fallen or felled trees along the ground.

Do not collect firewood within 20m of a watercourse.

Do not drive your vehicle off formed roads or tracks.

Do not cut, break off or damage standing trees or shrubs (living or dead).

Do not take away fallen or felled trees that are visibly hollow or growing moss or fungi with a coverage of >50%.

Do not damage, disturb or destroy native flora and fauna.

Do not injure, damage, deface, desecrate, destroy or remove cultural heritage sites and artefacts.

Take all litter with you when you leave.

Do not enter the forest on days of Code Red Fire Danger rating.

Do not use chainsaws on days of Total Fire Ban.

Use only chainsaws fitted with a proper exhaust and spark arrester.

Only refill chainsaw oil and fuel on an impermeable surface.

Safety

Please **take care of yourself and others at all times** when collecting firewood. In particular:

- Avoid collecting firewood when conditions are wet, windy or hot
- Assess your work area for hazards before you start work
- Avoid working near hazards
- Avoid working alone or with children
- Be trained and competent in the use of firewood collection equipment (including chainsaws) and use well maintained equipment
- Wear appropriate safety clothing and equipment

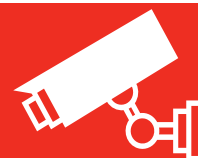
Hazards found in designated firewood collection areas may include, but are not limited to:

- broken overhead branches, dead standing trees
- uneven or slippery ground conditions
- vehicles
- mine shafts
- snakes and stinging insects.

Video surveillance cameras may be installed in this firewood collection area.

Authorised Officers conduct regular patrols of the forest.

Please ensure you abide by collection rules, as significant penalties apply.



If you suspect illegal activity, or for further information call Forest Fire Management Victoria 136 186 or visit ffm.vic.gov.au

FOREST FIRE
MANAGEMENT VICTORIA