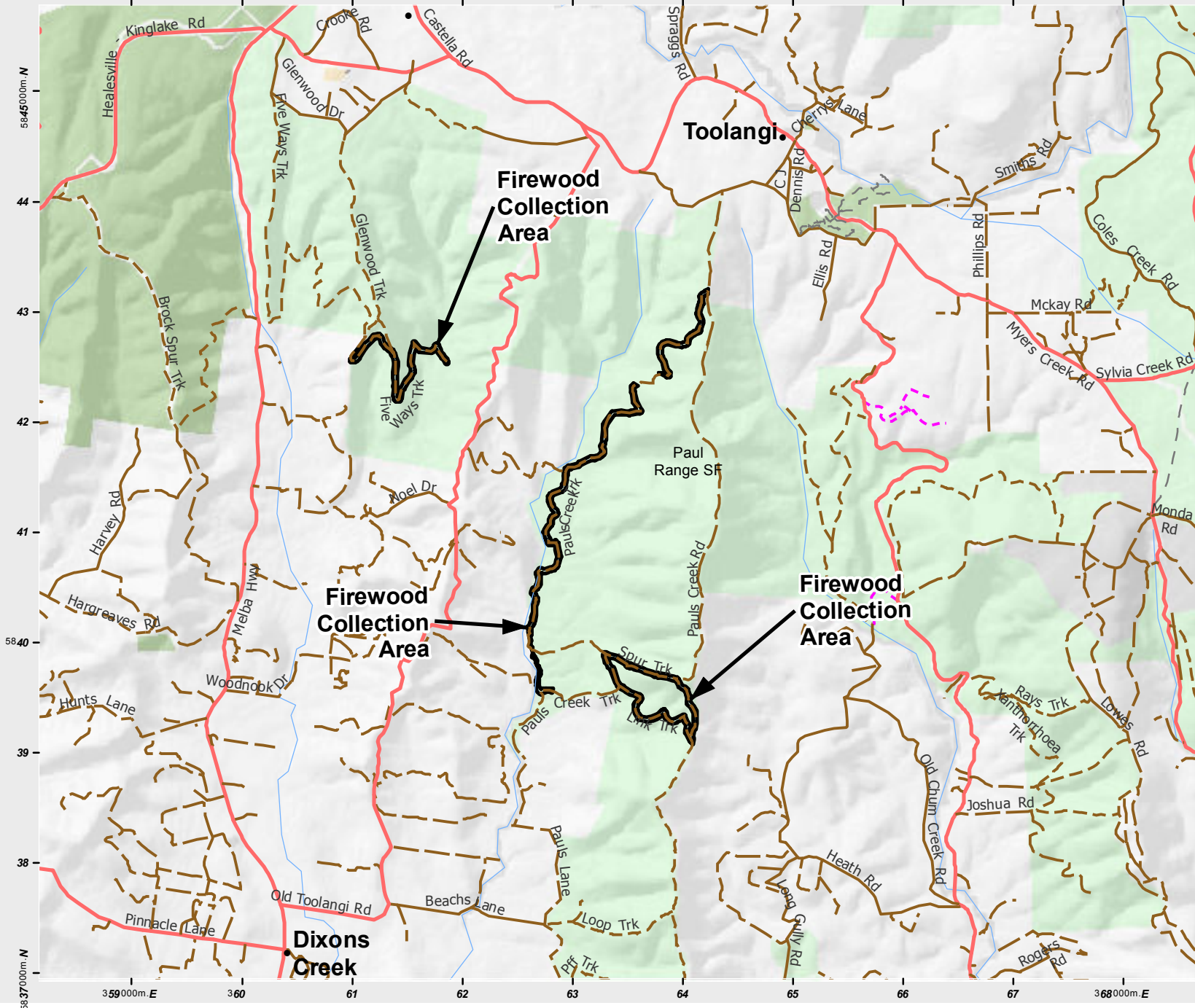


# DOMESTIC FIREWOOD COLLECTION AREA MAP

Firewood Collection Area Name: PAULS RANGE Region: PORT PHILLIP District: YARRA Forest Name: PAULS RANGE STATE FOREST



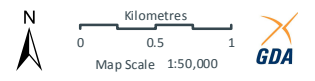
### Legend

	Firewood Collection Area		Major Watercourse
	Main Road (Sealed)		Minor Watercourse
	Local Road		Plantation
	2wd		State Forest and Forest Parks
	4wd		Parks and Reserves
	Foot Tk		Other Public Land
	Unmaintained		

There is no guarantee that firewood will be available for collection in the domestic firewood collection area after it has been opened. All persons entering and collecting in the domestic firewood collection area must have regard for their safety and the safety of others and must comply with all relevant laws when in State forest/Parks.



LEGL./17-291



Map produced by Port Phillip Region July 2017  
 Universal Transverse Mercator Projection  
 Datum: Geocentric Datum of Australia 1994 - GDA94  
 Grid lines on this map show 1000 Metre intervals of the Map Grid of Australia (MGA), Zone 55.

**Disclaimer**  
 This publication may be of assistance to you but the State of Victoria and its employees do not guarantee that the publication is without flaw of any kind or is wholly appropriate for your particular purpose and therefore disclaims all liability for any error, loss or other consequence which may arise from you relying on any information in this publication.

**Accessibility**  
 If you would like to receive this publication in an accessible format such as large print or black and white please telephone 136 186, or email customer.service@delwp.vic.gov.au. Deaf, hearing impaired or speech impaired? Call us via the National Relay Service on 133 677 or visit www.relay.vic.gov.au

© The State of Victoria  
 Department of Environment, Land, Water and Planning 2017

# Domestic Firewood Collection Rules

Firewood collection seasons: 1 March to 30 June (inclusive)  
1 September to 30 November (inclusive)

- Only collect firewood from within a designated domestic firewood collection area and during a domestic firewood season.
- Only collect fallen or felled trees.
- Do not collect more than 2m<sup>3</sup> per person per day. Note: 1m<sup>3</sup> is approximately a 1.8m (6') x 1.2m (4') trailer of split firewood neatly stacked to a height of 0.5m (20").
- Do not collect more than 16m<sup>3</sup> per household per financial year.
- It is illegal to sell firewood collected from domestic collection areas or to use the wood in a commercial enterprise.
- Heavy vehicles (> 4.5 tonne GVM) (including any trailer) must not be brought into or used in a domestic firewood collection area.
- Heavy machinery (e.g. a bulldozer, crane, excavator, forwarder, hydraulic log splitter, saw bench, skidder, skid steer loader and tractor) must not be brought into or used in a firewood collection area.
- Do not tow or winch fallen or felled trees along the ground.
- Do not collect firewood within 20m of a watercourse.
- Do not drive your vehicle off formed roads or tracks.
- Do not cut, break off or damage standing trees or shrubs (living or dead).
- Do not take away fallen or felled trees that are visibly hollow or growing moss or fungi with a coverage of >50%.
- Do not damage, disturb or destroy native flora and fauna.
- Do not injure, damage, deface, desecrate, destroy or remove cultural heritage sites and artefacts.
- Take all litter with you when you leave.
- Do not enter the forest on days of Code Red Fire Danger rating.
- Do not use chainsaws on days of Total Fire Ban.
- Use only chainsaws fitted with a proper exhaust and spark arrester.
- Only refill chainsaw oil and fuel on an impermeable surface.

Video surveillance cameras may be installed in this firewood collection area.  
Authorised Officers conduct regular patrols of the forest.

Please ensure you abide by collection rules, as significant penalties apply.

- If you suspect illegal activity contact our Customer Service Centre on 136 186

## Safety

Please take care of yourself and others at all times when collecting firewood. In particular:

- avoid collecting firewood when conditions are wet, windy or hot
- assess your work area for hazards before you start work,
- avoid working near hazards
- avoid working alone or with children
- be trained and competent in the use of firewood collection equipment (including chainsaws) and use well maintained equipment
- wear appropriate safety clothing and equipment

## Hazards

Hazards found in designated firewood collection areas may include but are not limited to:

- broken overhead branches, dead standing trees
- uneven or slippery ground conditions
- vehicles
- mine shafts
- snakes and stinging insects.

Please refer to [www.worksafe.vic.gov.au](http://www.worksafe.vic.gov.au) for more information on safety in forest operations.

## Further Information:

For further information please visit [www.ffm.vic.gov.au/firewood](http://www.ffm.vic.gov.au/firewood) or call the Customer Service Centre ☎ 136 186.